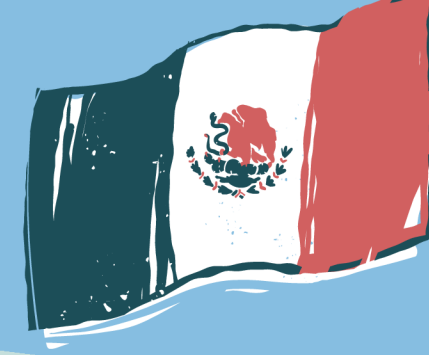




ELEK GIOVANNI ZAMORA  
RECINOS



ALEXIA BERENICE  
BARRIOS FERNANDEZ



**SUPER NOTE:** Write a super note in which you graphically depict the parts of a house and the furniture that corresponds to those parts of the house.

Start date: Wednesday, March 12, 2025

Closing date: Sunday, March 16, 2025

LIC NURSING  
2ND QUARTER



# PARTS OF THE HOUSE



House



STAIRS



LAUNDRY ROOM

## LAUNDRY ROOM FURNITURE

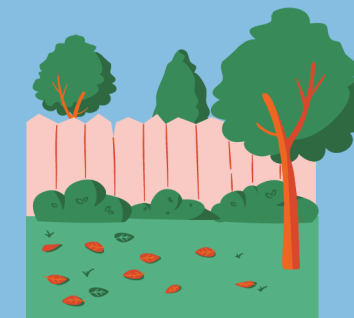
1. WASHING MACHINE
2. IRONING TABLE
3. LAMP
4. CLOTHES LINE
5. WASHING MACHINE ORGANIZER
6. SHELF
7. AUXILIARY CART
8. IRON



BATHROOM

## BATHROOM FURNITURE

1. TOILET
2. SHOWER
3. URINALS
4. SHOWER FAUCETS
5. WASHBASIN
6. MIRROR
7. RUG
8. BATHTUB



BACKYARD

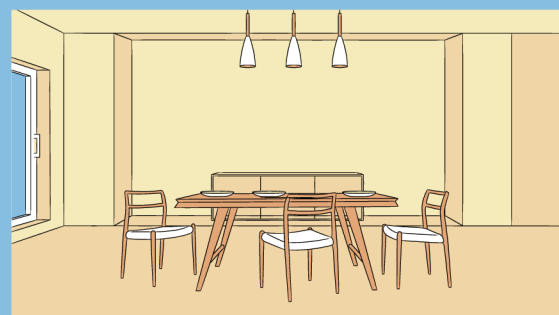
5. DISH
6. CUP
7. GLASS
8. SPOON



LIVING ROOM

## LIVING ROOM FURNITURE

1. FAN
2. SOFA
3. TV
4. WING CHAIR
5. PICTURE
6. BLINDS
7. CURTAINS
8. COFFEE TABLE



DINING ROOM

## BEDROOM FURNITURE

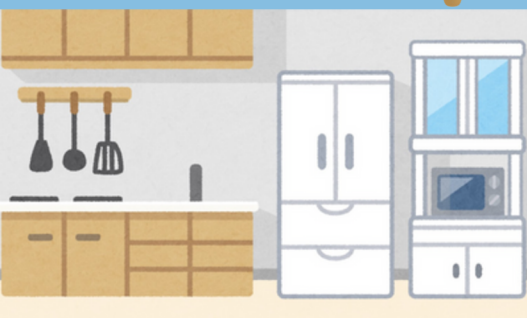
1. CHAIR
2. TABLE
3. FLOWER
4. SALT SHAKER



BEDROOM

## BEDROOM FURNITURE

1. BED
2. PILLOW
3. COMFORTER
4. WARDROBE
5. ALARM CLOCK
6. BEDSIDE TABLE
7. DRESSING TABLE
8. BEDSIDE LAMP



KITCHEN

## KITCHEN FURNITURE

1. MICROWAVE
2. FRIDGE
3. GRILLS
4. KITCHEN SINK
5. BLENDER
6. FRYER
7. STOVE
8. CROCKERY



ROOF



ATTIC

MAKE A SUPER NOTE WHERE YOU GRAPHICALLY REPRESENT THE PARTS OF A HOUSE AND THE FURNITURE THAT CORRESPONDS TO THOSE PARTS OF THE HOUSE.