



EZEQUIEL ORDOÑEZ VAZQUEZ

WORKBOOK UNIT 4

INGLES II

RAFAEL IVAN GUILLEN ALCALA

MEDICINA VETERINARIA Y ZOOTECNIA

PARCIAL IIII

CUATRIMESTRE 2°

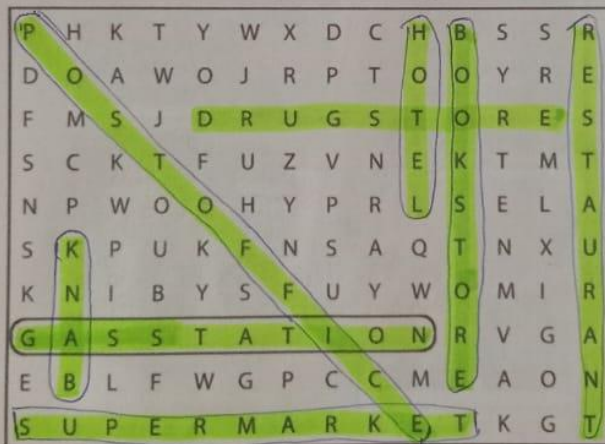
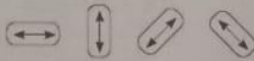
WORKBOOK

1 Places

A Complete these sentences with the correct places.
Write one letter on each line.

- We need gasoline for the car. Is there a gas station near here?
- I'm going to go to the bank. I need some traveler's checks.
- I work at a bookstore. I love books, so it's a great job.
- Are you going to the post office? I need some stamps.
- We don't have anything for dinner. Let's buy some food at the supermarket.
- Tomorrow we're going to go to Paris for five days. We're going to stay at an expensive hotel.
- I have a stomachache. Can you buy some antacid at the drugstore?
- Let's go out for lunch. There's a great Mexican restaurant downtown.

B Find and circle the places in part A in the puzzle.



2

Look at the map. Complete the sentences with the prepositions in the box.

- | | | |
|--------------------------------------|----------------------------------|---|
| <input type="checkbox"/> across from | <input type="checkbox"/> between | <input checked="" type="checkbox"/> on |
| <input type="checkbox"/> behind | <input type="checkbox"/> next to | <input type="checkbox"/> on the corner of |

- The English school is on Catherine Street.
- The hospital is behind the hotel.
- The Mexican restaurant is on the corner of Beatrice Street and Fourth Avenue.
- The bank is on Barbara Street, between Sixth and Seventh Avenues.
- The bookstore is next to the English school.
- The coffee shop is across from the park.

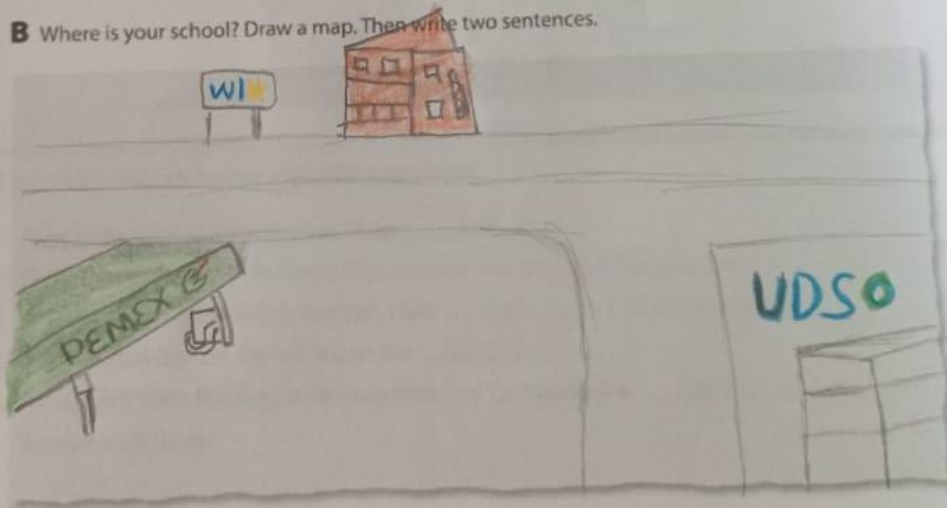


3 Where is it?

A Look at the map in Exercise 2 again. Where is each place? Write two sentences.

- 1. bookstore The bookstore is on the corner of Catherine Street and Fifth Avenue. It's next to the English school.
- 2. supermarket it's next to coffee shop
it's on Diane St.
- 3. department store it's on the corner of Beatrice St
it's next the drugstore
- 4. gas station it's behind the Mexican restaurant
it's on the 4th Av
- 5. Chinese restaurant its on Catherine St
its between 6th and 7th Av
- 6. hotel Its across from the park
its between chinese restaurant and book store
- 7. post office it's next to the cafe.
it's on Diane st
- 8. drugstore its on beatrice st.

B Where is your school? Draw a map. Then write two sentences.



4

Complete the conversation. Use the sentences and questions in the box.

- | | |
|--|---|
| <input type="checkbox"/> Next to the café? | <input checked="" type="checkbox"/> Excuse me. Can you help me? |
| <input type="checkbox"/> Is there a post office around here? | <input type="checkbox"/> Where on Diane Street? |
| <input type="checkbox"/> Thanks a lot. | |

Rachel: Excuse me. Can you help me?

Man: Sure.

Rachel: Is there a post office around here?

Man: Yes, there is. It's on Diane Street.

Rachel: Where on Diane Street?

Man: It's on the corner of Diane Street and Seventh Avenue.

Rachel: Next to the café?

Man: Yes, that's right. It's right next to the café.

Rachel: Thanks a lot

Man: You're welcome.



5

Complete the sentences with the opposites.

- Don't turn *right* on Fifth Avenue. Turn left.
- The Waverly Hotel isn't *in front of* the concert hall. It's behind it.
- Don't walk *down* Columbus Avenue. Walk up Columbus Avenue.
- The museum isn't on the *left*. It's on the right.
- The Empire State Building is *far* from here, but Central Park is near here.
You can walk there.

6 Look at the map. Give these people directions. Use the phrases and sentences in the box.

Walk up/Go up . . . Street/Avenue.
 Turn left on . . . Street/Avenue.
 Walk to . . . Street/Avenue.

Walk down/Go down . . . Street/Avenue.
 Turn right on . . . Street/Avenue.
 It's on the left/right.



1. Sophia is looking for the Mexican restaurant.
Go up Fifth Avenue. Turn left on Beatrice Street.
Walk to Fourth Avenue. It's on the right.
2. Kate is looking for the post office.
Walk along Sixth Avenue. Turn left onto Ann Street
The post office is on your left
3. Bob is looking for the supermarket.
walk along Fourth Avenue. Turn right onto Catherine
Street. The supermarket is on your right
4. Jim is looking for the bank.
walk along seventh Avenue. Turn left onto Ann
street. The bank is next to the hotel on the left.

