

WDS

ACT. PLATAFORMA

JESUS EMANUEL DIAZ
MORALES

INGLES 2

RAFAEL IVAN ALCALA
GUILLEN

UNIDAD 4

CUATRIMESTRE 2

DISEÑO GRAFICO

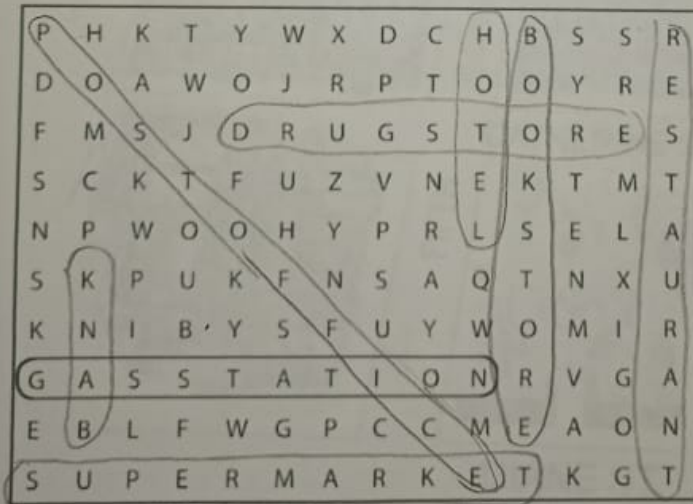
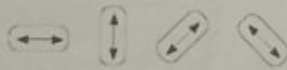
WORKBOOK

1 Places

A Complete these sentences with the correct places.
Write one letter on each line.

- We need gasoline for the car. Is there a gas station near here?
- I'm going to go to the bank. I need some traveler's checks.
- I work at a bookstore. I love books, so it's a great job.
- Are you going to the post office? I need some stamps.
- We don't have anything for dinner. Let's buy some food at the supermarket.
- Tomorrow we're going to go to Paris for five days. We're going to stay at an expensive hotel.
- I have a stomachache. Can you buy some antacid at the drugstore?
- Let's go out for lunch. There's a great Mexican restaurant downtown.

B Find and circle the places in part A in the puzzle.



2

Look at the map. Complete the sentences with the prepositions in the box.

- | | | |
|--------------------------------------------|----------------------------------|-------------------------------------------|
| <input type="checkbox"/> across from | <input type="checkbox"/> between | <input checked="" type="checkbox"/> on |
| <input checked="" type="checkbox"/> behind | <input type="checkbox"/> next to | <input type="checkbox"/> on the corner of |

- The English school is on Catherine Street.
- The hospital is behind the hotel.
- The Mexican restaurant is on the corner of Beatrice Street and Fourth Avenue.
- The bank is on Barbara Street, Between Sixth and Seventh Avenues.
- The bookstore is Next to the English school.
- The coffee shop is Across from the park.



3 Where is it?

A Look at the map in Exercise 2 again. Where is each place? Write two sentences.

- 1. bookstore The bookstore is on the corner of Catherine Street and Fifth Avenue. It's next to the English school
- 2. supermarket The supermarket is behind Diana St
The supermarket is next to the coffee shop
- 3. department store The department store is between Fourth Ave and Fifth Avenue
The department store is across the hospital
- 4. gas station The gas station is behind the Mexican restaurant
The gas station is on the corner of Fourth Ave
- 5. Chinese restaurant The Chinese restaurant is between Sixth Avenue and Seventh Ave
The Chinese restaurant is across from the hotel
- 6. hotel The hotel is behind Catherine St
The hotel is across from the bookstore
- 7. post office The post office is next to the cafe
The post office is behind Diana St
- 8. drugstore The drugstore is between the Mexican restaurant and the Department store
The drugstore is across from the English school and the bookstore

B Where is your school? Draw a map. Then write two sentences.



The UDS is located on the road that goes to terminal (km. 57)
Next to the UDS there is a vacant lot and a hotel

4 Complete the conversation. Use the sentences and questions in the box.

- Next to the café?
- Is there a post office around here?
- Thanks a lot.
- Excuse me. Can you help me?
- Where on Diane Street?

Rachel: Excuse me. Can you help me?
 Man: Sure.
 Rachel: is there a post office around here?
 Man: Yes, there is. It's on Diane Street.
 Rachel: where on Diane street
 Man: It's on the corner of Diane Street and Seventh Avenue.
 Rachel: Next to the cafe
 Man: Yes, that's right. It's right next to the café.
 Rachel: thanks a lot
 Man: You're welcome.



5 Complete the sentences with the opposites.

1. Don't turn *right* on Fifth Avenue. Turn left.
2. The Waverly Hotel isn't *in front of* the concert hall. It's in the back of it.
3. Don't walk *down* Columbus Avenue. Walk up Columbus Avenue.
4. The museum isn't on the *left*. It's on the right.
5. The Empire State Building is *far from* here, but Central Park is near here.
You can walk there.



6

Look at the map. Give these people directions. Use the phrases and sentences in the box.

Walk up/Go up . . . Street/Avenue.

Turn left on . . . Street/Avenue.

Walk to . . . Street/Avenue

Walk down/Go down . . . Street/Avenue.

Turn right on . . . Street/Avenue.

It's on the left/right.



1. Sophia is looking for the Mexican restaurant.

Go up Fifth Avenue. Turn left on Beatrice Street.

Walk to Fourth Avenue. It's on the right.

2. Kate is looking for the post office.

walk down Catherine St. Turn right on sixth avenue

go down Diane St. It's on the left

3. Bob is looking for the supermarket.

walk down Seventh Ave. Turn left on Catherine St

go down Fifth Avenue. The supermarket is on the left

4. Jim is looking for the bank.

walk up Ann St. Turn left on sixth avenue.

Turn right on Barbara St. The bank is on the left