

Mi Universidad

PLATAFORMA

FERNANDA STEPHANIA RAMIREZ GUILLÉN

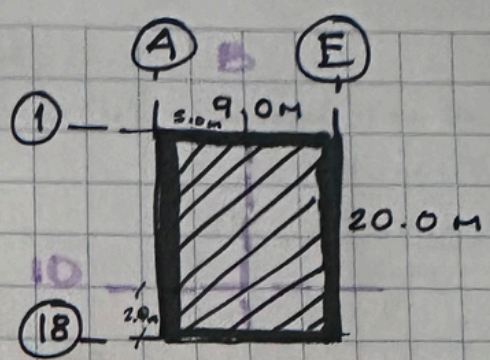
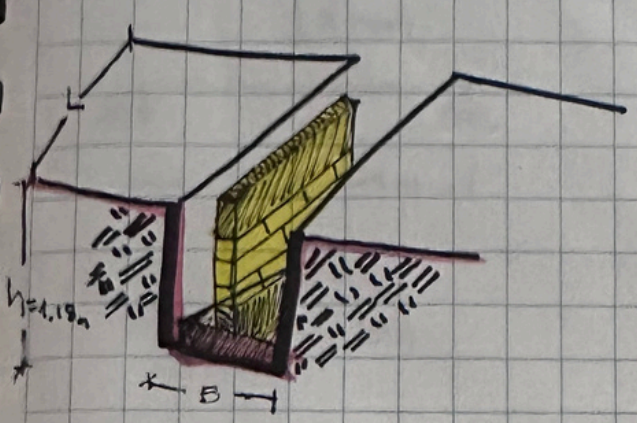
ARQUITECTURA

TALLER DE CONSTRUCCIÓN DE

MATERIALES BÁSICOS

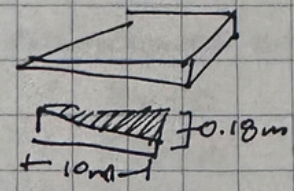
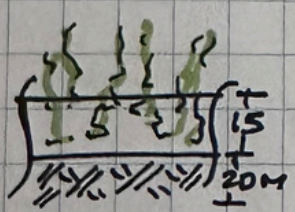
PEDRO ALBERTO GARCÍA LOPEZ

Cuatrimestre 5°



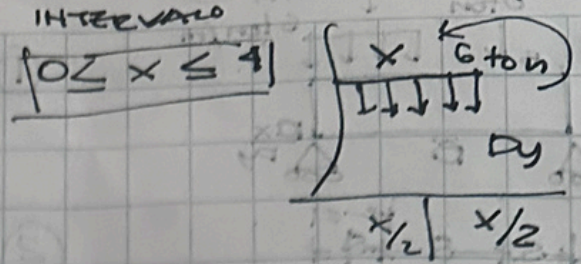
| CONCEPTO | UNIDAD | TRAMO | LARGO |
|----------|----------------|-------|-------|
| LIMPIEZA | M ² | A-E | 20.0M |

| ANCHO | ALTURA | PIEZAS | TOTAL OBSEX. |
|-------|--------|--------|-------------------|
| 9.0M | / | 1 | 180m ² |



| EJE | CONCEPTO | UNIDAD | TRAMO | LARGO | ANCHO | ALTURA | PIEZAS | TOTAL OBS. |
|------|---|----------------|-------|--------|-------|--------|--------|---|
| 1-18 | LIMPIEZA | M ² | A-E | 20.0m | 9.0M | / | 1 | 180 m ² |
| 10 | TRAZO | M ² | AB | 5.0M | / | / | 1 | 5.0M |
| 1-18 | NIVELACIÓN | M ³ | A-E | 20 M | 9.0M | / | 1 | 16.2 m ³ |
| 10 | EXCAVACIÓN | M ² | A-B | 4.50m | 1.0M | 1.18m | 5 | + 95% con = 21.54 m ³ |
| 1-18 | B | B | 1-18 | 20 m | 1.0m | 1.18m | 1 | → 5.91 m ² 20-1 |
| | | | | | | | | → 23.60 m ³ + 20.01 m ³ + 30% AB = 37.67 m ³ |
| 10 | PLANTILLA CONCRETO F0.82=10M ³ | / | A-B | 4.50 m | 1.0M | 0.05m | 1 | 0.225 20-1 |
| B | | | 1-18 | 20 m | 1.0m | 0.05m | 1 | 1.0 20-1 |
| | | | | | | | | 1.225 m ³ + 5% P.B.P. = 1.51 m ³ |

$$M_3 = 6x$$

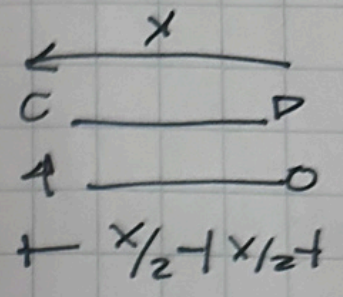


$$M_3 = 23.429 x - 6x(x/2)$$

$$M_3 = 23.429 x - 3x^2$$

$$6x \left(\frac{x}{2} \right) = \frac{6x^2}{2}$$

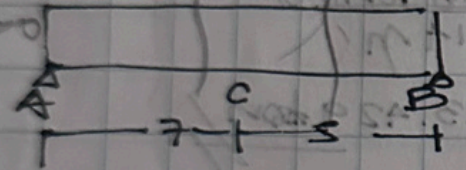
$$= 3x^2$$



$$\sum M = 0$$

$$\sum F_x = 0$$

$$\sum F_y = 0$$



$$\textcircled{1} \sum F_x = 0$$

$$\textcircled{2} 5 \times 10 = 50 \text{ ton}$$

$$\textcircled{2} \sum M_A = 0$$

$$B_y (12m) - 10 \text{ ton} (7m) = 0$$

$$B_y (12m) - 70 \text{ ton} \cdot m = 0$$

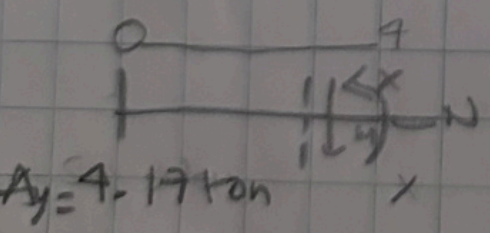
$$B_y (12m) = 70 \text{ ton} \cdot m$$

$$B_y = \frac{70 \text{ ton} \cdot m}{12 m} = 5.83 \text{ ton}$$

$$\textcircled{3} A_y - 10 \text{ ton} + 5.83 \text{ ton}$$

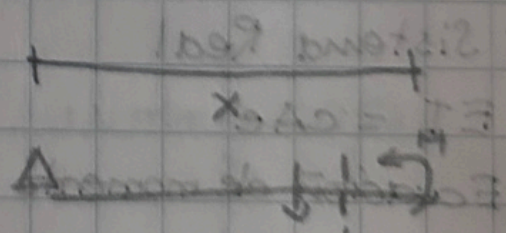
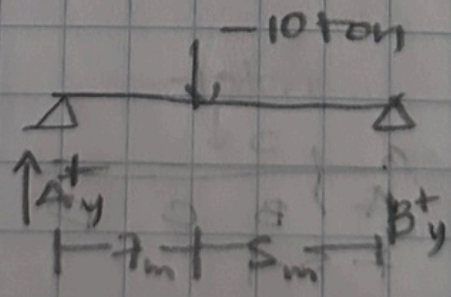
$$A_y - 10 \text{ ton} + 5.83 \text{ ton} = 0$$

$$\textcircled{4} A \quad \quad C$$



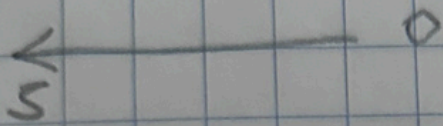
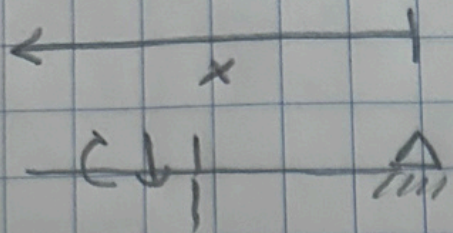
$$A_y = 4.17 \text{ ton}$$

$$M_1 = 4.17 x$$



$$M_1 = 4.17 x$$

$M_2 =$



$M_2 = 5.83x$

A right-pointing arrow with a lightning bolt tail is drawn below the equation.