

ANA CRISTELL GÓMEZ RODRÍGUEZ

MATERIAL	CANTIDAD	UNIDAD
CONCRETO F'c = 100 KG/CM ²		
CEMENTO	5	BOLLOS
ARENA	0.63	m ³
GRAVA	0.72	m ³

Grava = 8

Arena = 7

1 BOTE CONTIENE 19L = 18L = 0.018

ARENA = 5 x 7 = 35 x 0.018 = 0.63

GRAVA = 5 x 8 = 40 x 0.018 = 0.72

MATERIAL	CANTIDAD	UNIDAD
CONCRETO F'c = 200 KG/CM ²		
CEMENTO	7	BOLLOS
ARENA	0.504	m ³
GRAVA	0.756	m ³

Grava = 6

Arena = 4

7 x 4 = 28 x 0.018 = 0.504

7 x 4 = 28 x 0.018 = 0.504

7 x 6 = 42 x 0.018 = 0.756

PLANTILLA

F'c = 100 KG/CM²

V = 0.05 x 4 x 0.80 = 0.16 m³

CEMENTO = 5 x 0.16 m³ = 0.8

ARENA = 0.63 x 0.16 m³ = 0.1008

GRAVA = 0.72 x 0.16 m³ = 0.1152

10% (1.10)

TOTAL

0.88

0.11088

0.12672

ZAPATA

F'c = 200 KG/CM²

V = 0.15 x 4 x 0.80 = 0.48

CEMENTO = 7 x 0.48 = 3.36

ARENA = 0.504 x 0.48 = 0.24192

GRAVA = 0.756 x 0.48 = 0.36288

3.696

0.266112

0.399768

CONTRATRABE

F'c = 200 KG/CM²

V = 0.35 x 4 x 0.30 = 0.42

CEMENTO = 7 x 0.42 = 2.94

ARENA = 0.504 x 0.42 = 0.21168

GRAVA = 0.756 x 0.42 = 0.31752

3.234

0.232848

0.349272

CASTILLO

V = 0.15 m x 3 x 0.20 = 0.09

CEMENTO = 7 x 0.09 = 0.63

ARENA = 0.504 x 0.09 = 0.04536

GRAVA = 0.756 x 0.09 = 0.06804

0.693

0.049896

0.079844

CADENA DE DESPLANTE

$V = 0.15 \times 3.8 \times 20 = 0.114$

CEMENTO = $7 \times 0.114 = 0.798$

ARENA = $0.604 \times 0.114 = 0.068856$

GRAVA = $0.756 \times 0.114 = 0.086184$

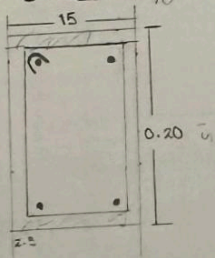
0.8778

0.0632016

0.0948024

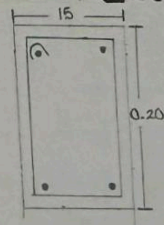
CADENA DE DESPLANTE DE 15x20 CM

4Ø#3, E#2@15cm



CASTILLO

4Ø#3, E#2@15cm



Varilla	ML	Kg/1m	PESO	15l.	TOTAL
3	16	0.56	8.96	1.344	10.304
2	19.6	0.25	4.9	0.735	5.635
TOTAL					15.939
ALAMBRE DE AMARRE					0.796

16.735

COSTO \$15 x 16.735

= \$ 490.124