

LADRILLO

PIEZAS - AL HILO

$$38.89 \times 10.08 \text{ m}^2 = 392 \text{ PIEZAS}$$

MORTERO

$$0.040 \text{ m}^3 \times 10.08 \text{ m}^2$$

CAPADINO

657 PIEZAS

ATIZON

~~700~~

TABICON

PIEA AL HILO

$$29.17 \text{ m} \times 10.80 \text{ m}^2 = 316 \text{ PIEZAS}$$

ATIZON

591 PIEZAS

BLOCK 12x20x40

120cms

$$11.36 \times 10.80 \text{ m}^2 = 123 \text{ PIEZAS}$$

20

103 PIEZAS

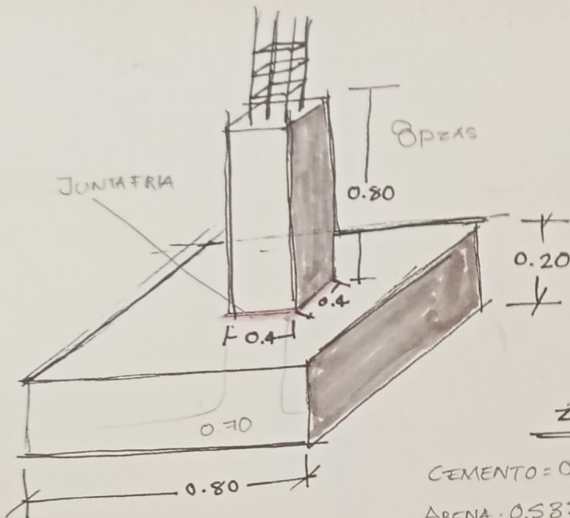
BLOCK 15x20x40

20

$$14 \times 10.80 \text{ m}^2 = 159 \text{ PIEZAS}$$

13

123 PIEZAS

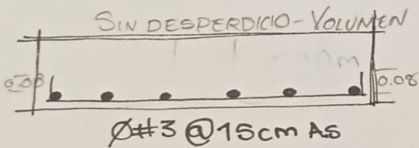


ZAPATA
 $0.8 \times 0.80 \times 0.20 = 0.128 \text{ m}^3$

DADO
 $0.40 \times 0.40 \times 0.80 = 0.128 \text{ m}^3$

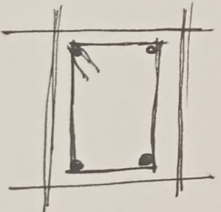
MATERIALES
ZAPATA

CEMENTO = $0.388 \times 0.128 \text{ m}^3 = 0.04 \times 4$
 ARENA = $0.585 \times 0.128 \text{ m}^3 = 0.06 \text{ m}^3 \times 4$
 GRAVA = $0.630 \times 0.128 \text{ m}^3 = 0.08 \text{ m}^3 \times 4$
 AGUA = $0.202 \times 0.128 \text{ m}^3 = 0.027 \times 4$



DADO
 CEMENTO

$L = 0.96 \text{ m}$ $N = 6, A.S$
 $= 12 V$ ARMADO DE CASTILLO
 $0.75 \div 1 =$



ZAPATA - BAÑO

CONCRETO
 ZAPATA
 $0.80 \times 0.80 \times 0.15 = 0.096 \text{ m}^3$

DADO
 $0.30 \times 0.30 \times 0.45 = 0.0405 \text{ m}^3$

ZAPATA
 CEMENTO
 $0.96 \text{ m}^3 \times 0.388 = 0.37 \text{ m} \times 4 = 1.48$

ARENA
 $0.96 \text{ m}^3 \times 0.585 = 0.51 \times 4 = 2.04$

GRAVA
 $0.96 \text{ m}^3 \times 0.630 = 0.60 \times 4 = 2.4$

AGUA
 $0.96 \times 0.202 = 0.19 \times 4 = 0.76$

DADO
 CEMENTO
 $0.0405 \times 0.388 = 0.015$

ARENA
 $0.0405 \times 0.585 = 0.021 \times 0.084$

GRAVA
 $0.0405 \times 0.630 = 0.025 \times$

AGUA
 $0.0405 \times 0.202 = 0.008$

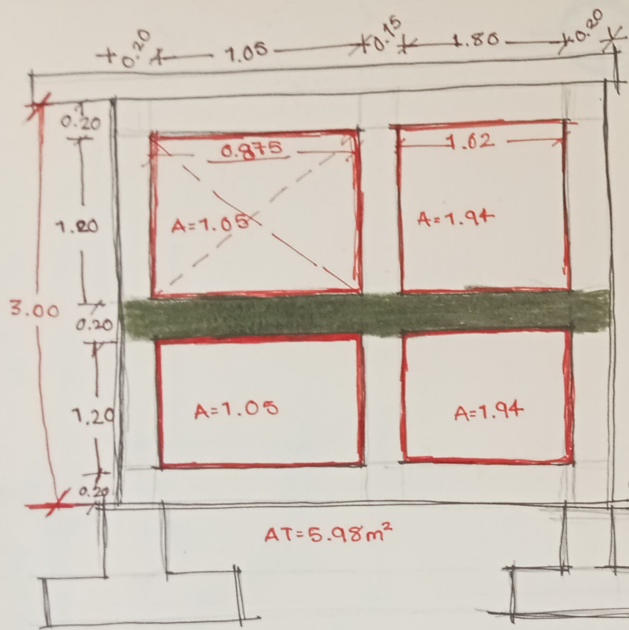
ACERO #3 @ 15cm
 $0.80 \div 0.15 = 5.33 + 1 = 6 \times 2 = 12$

V
 $0.96 \times 12 \text{ PZAS} = 11.52 \text{ m} \rightarrow 7 \text{ VARIL}$
 $L \times 4 = 46.08 = 4 \text{ VARILLAS}$

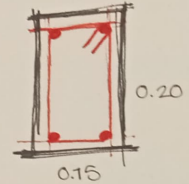
DADO VARILLAS
 $1.30 \times 4 = 5.2 \text{ m} \times 4 = 20.8$

ESTRIBOS
 $0.60 \div 0.15 = 4 \text{ PZAS}$
 $0.30 \times 4 = 1.2 \text{ m} \times \text{PZA} \times 4 = 4.8 \text{ m} \times 4 = 19.4$

CUANTIFICACIÓN DE CASTILLOS Y CAD.



C. CERRAMIENTO
F'c = 200 kg/cm²



K-2
15x20.E@15cm Ø#2
4Ø#3-3/8

C. INTERMEDIA
F'c = 200 kg/cm²

$$5.76 \times 4 \times 0.566 = 73.018 = 20 \times K$$

$$15 + 15 + 20 + 20 = 70 \times 0.31 \times 21.7 \times 0.25 = 3.12 \text{ kg}$$

C. DESPLANTE
F'c = 200 kg/cm²

AT = 5.98 m²

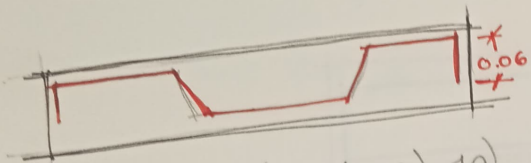
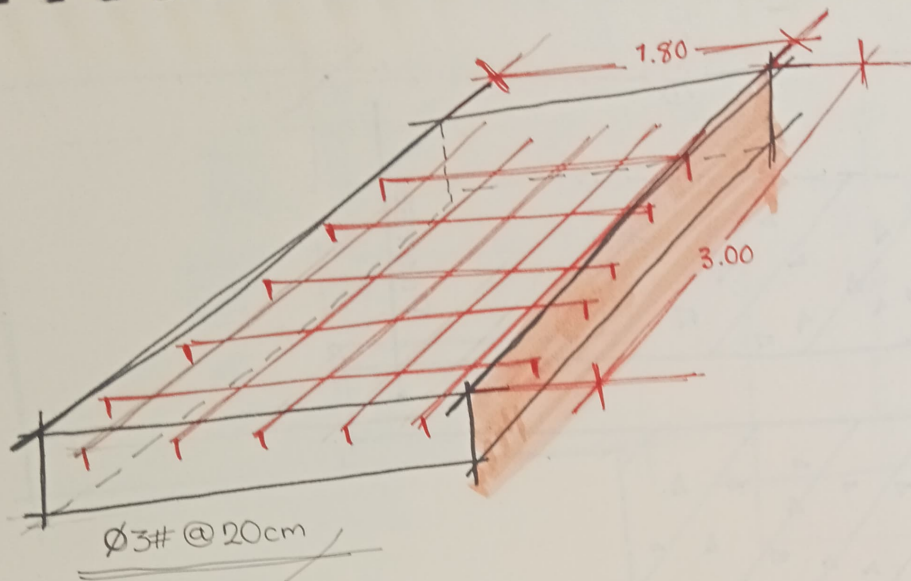
MURO DE LADRILLO - PZAS
• 534 piezas

CONCRETO

A-B = 1.225 x 0.20 x 0.15 = 0.36 m³
 B-C = 1.325 x 0.20 x 0.15 = 0.56 m³
 C-C = 1.20 x 0.20 x 0.15 = 0.027 m³

LOSA MASA

CUNTIFICACIÓN

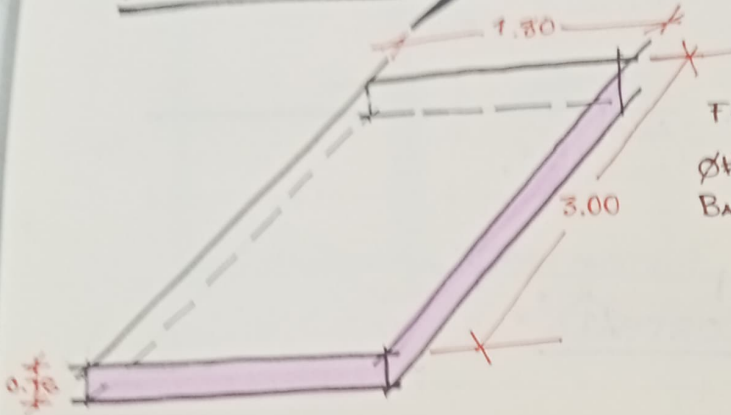


$$\frac{3}{8} \text{OK} = 1.80 + 0.12(3.00/0.20) = 10$$
$$1.92 \times 16 = 30.72 = 2.56 = 3 \text{ PZAS}$$

$$3.00 + 0.12 = 3.12(1.80/0.20) = 10$$
$$3.12 \times 10 = 31.2 \text{ ML} = 2.6 = 3 \text{ PZAS}$$

COSTOS Y PRESUPUESTO

LOSA DE BAÑO



ESPECIFICACIONES

$f'c = 250 \text{ Kg/cm}^2$

$\phi \#3 @ 20 \text{ cm}$

BASTONES $1.00 @ 50 \text{ cm}$

PERIMETRAL

ARMADO $1.80 \times 3.00 =$
 $3 \div 0.20 = 15 + 1 = 16 \text{ PZAS} \times 3.00 = 48.8 \text{ m}$
 $15 \div 0.20 = 75 + 1 = 76 \text{ PZAS} \times 1.80 = 75.5 \text{ m}$
 BASTONES 1.00×1.80

CONCRETO
 LOS 0.81 m^3

CEMENTO

$0.81 \times 0.388 = 0.314 \text{ m}^3 = 7 \text{ bolsas}$

ARENA

$0.81 \times 0.363 = 0.285 \text{ m}^3 = 1 \text{ m}^3$

ARENA

$0.81 \times 0.630 = 0.510 \text{ m}^3 = 1 \text{ m}^3$

$8 \div 0.60 = 6 \text{ PZAS} + 1 = 7 \text{ PZAS} \times 1.10 = 7.70 \text{ m}$
 $1.8 \div 0.60 = 4 \text{ PZAS} = 1.10 = 4.40 \text{ m}$
 $\frac{7.70}{1.2}$
 $\frac{4.40}{1.2}$
 7 PZAS

ARMADO LOSA

$48.8 \text{ m} \times 0.566 = 27.62 \text{ kg}$

$75.5 \text{ m} \times 0.566 = 42.71 \text{ kg}$

BASTONES

$75.5 \times 0.566 = 42.71 \text{ kg}$

$8.80 \times 0.566 = 4.98 \text{ kg}$

51.70 → 76 P

PRECIO

MATERIAL	DZA, PESO, CANTI	PRECIO	TOTAL
CEMENTO	7 bolsas	\$250.00	\$1,750
ARENA	1 m ³	\$333.00	\$333
GRAVA	1 m ³	\$333.00	\$333
ACERO #13	8 PZAS	\$117	\$1,416
Alambrito	2.71 kg	\$75	\$203
		TOTAL	\$4,035

Cuantificación

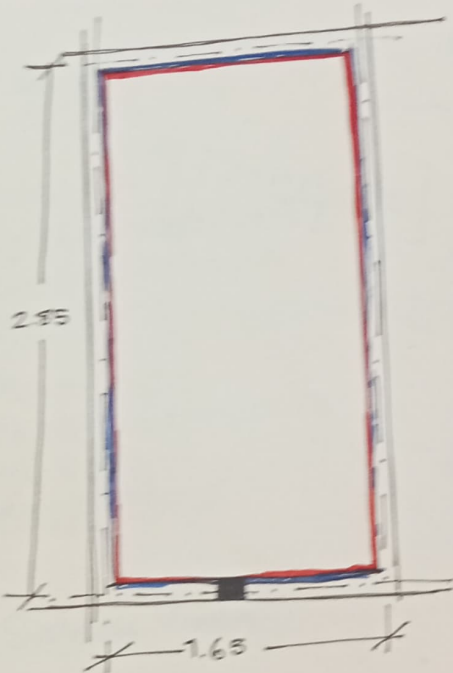
Costos y Presupuesto

04/03/2025

7L-0 → 74 m²

PISO

FIRME DE CONCRETO 4.05 m²



PINTURA 1L - 3m²

244 m² = 5L = 1 GALON + 1L = 7 MOROS

REPELLO

244 × 4.05 + 228 = 57.21

57.21 × 0.03 = 1.7163 m³

CEMENTO = $\frac{1}{6} \times 0.24 \times 1.71 = 0.41 \text{ m}^3 = 8 \text{ Bultos}$

ARENA = $1.261 \times 1.71 = 2.15 \text{ m}^3 = 24 \text{ LATAS}$

AGUA = $0.234 \times 1.71 = 0.4 \text{ m}^3 = 5 \text{ LATAS}$

7 Lata = 19L - 7

1L = 1Kg

~~Ferralla~~ 100kg

Piso: 750kg/cm²

CIMENTACION = 250kg/cm²

DADO 250kg/cm²

CADENA = 750kg/cm²

CAJILLOS = 150-200

LOSAS = 250 0200

TRABE = 200

Columna = 250 0200

100 = 16 LTA - 8-8

150 = 12 LTA - 6-4

200 = 10 LTA - 5-5

250 = 8 LTA - 6

pedra
Pegues - Cal