

Ejercicios

Actividad de Plataforma

Materia: Matematicas Administrativas

Alumna: Katherine Perez Parra
Profesora: Vania Natali Santizo

1. $3x - 2$

x	y
2	4
1	1
0	-2
-1	-5
-2	-8

1. $3(2) - 2 = 4$

2. $3(1) - 2 = 1$

3. $3(0) - 2 = -2$

4. $3(-1) - 2 = -5$

5. $3(-2) - 2 = -8$

2. $-2x + 5$

x	y
2	1
1	3
0	5
-1	7
-2	9

1. $-2(2) + 5 = 1$

2. $-2(1) + 5 = 3$

3. $-2(0) + 5 = 5$

4. $-2(-1) + 5 = 7$

5. $-2(-2) + 5 = 9$

3. $0.5x + 4$

x	y
2	5
1	4.5
0	4
-1	3.5
-2	3

1. $0.5(2) + 4 = 5$

2. $0.5(1) + 4 = 4.5$

3. $0.5(0) + 4 = 4$

4. $0.5(-1) + 4 = 3.5$

5. $0.5(-2) + 4 = 3$

$$4. -x - 3 =$$

x	y
2	-5
1	-4
0	-3
-1	-2
-2	-1

$$1. -(2) - 3 = -5$$

$$2. -(1) - 3 = -4$$

$$3. -(0) - 3 = -3$$

$$4. -(-1) - 3 = -2$$

$$5. -(-2) - 3 = -1$$

$$5. 4 - 3x$$

x	y
2	-2
1	1
0	4
-1	7
-2	10

$$1. 4 - 3(2) = -2$$

$$2. 4 - 3(1) = 1$$

$$3. 4 - 3(0) = 4$$

$$4. 4 - 3(-1) = 7$$

$$5. 4 - 3(-2) = 10$$

$$6. \frac{2x + y}{1}$$

$$10. \frac{6x - y}{1}$$

$$7. \frac{3x - 2y}{1}$$

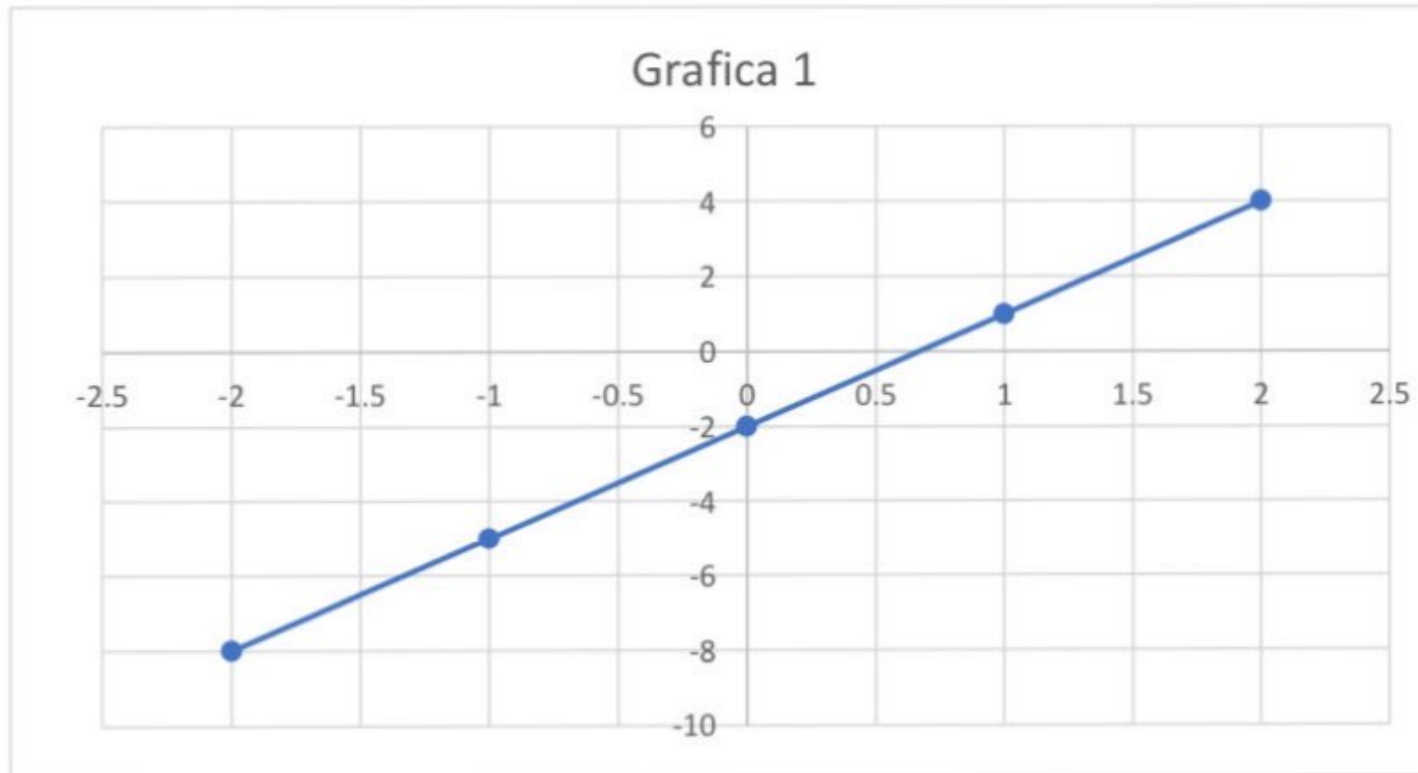
$$8. \frac{5x + 4y}{1}$$

$$9. \frac{-x + 3y}{1}$$

Eje X

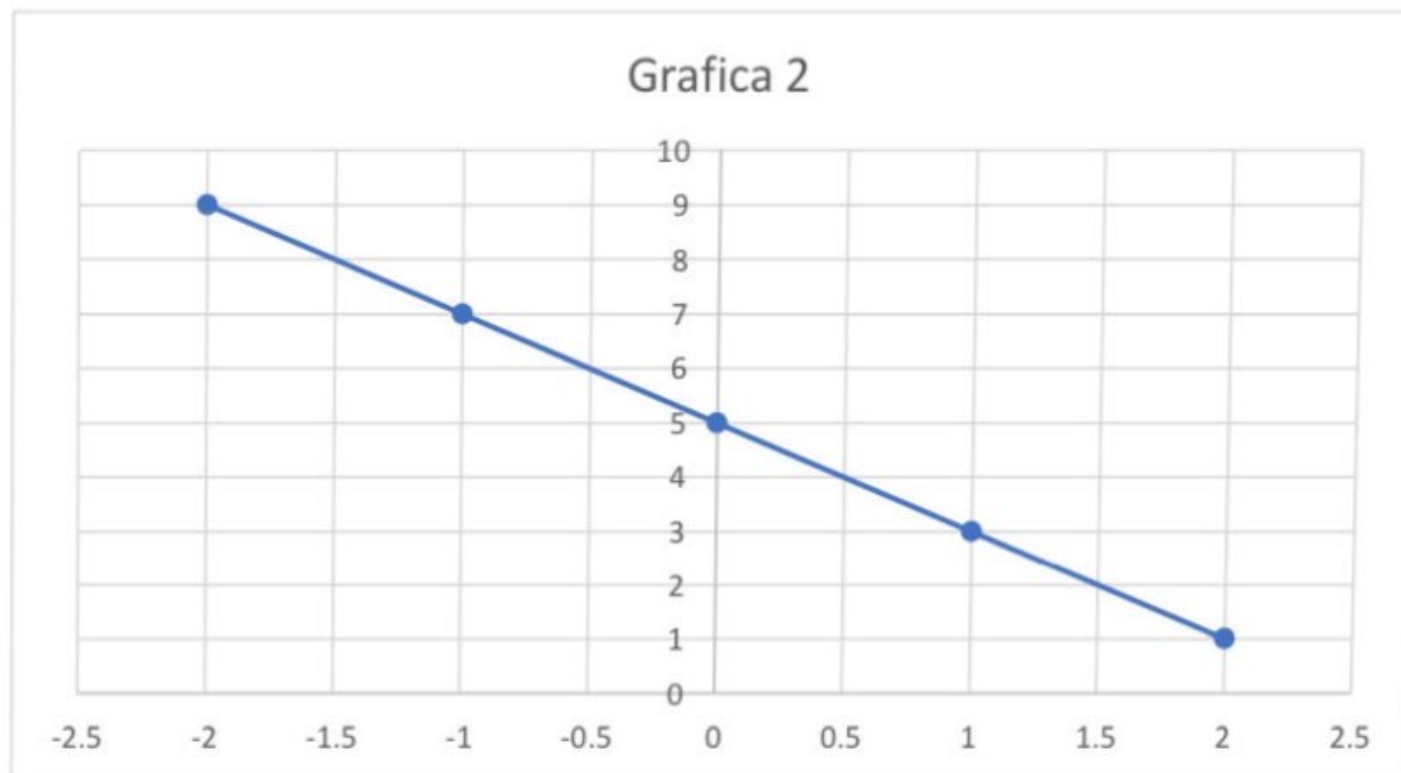
Eje y

2	4
1	1
0	-2
-1	-5
-2	-8

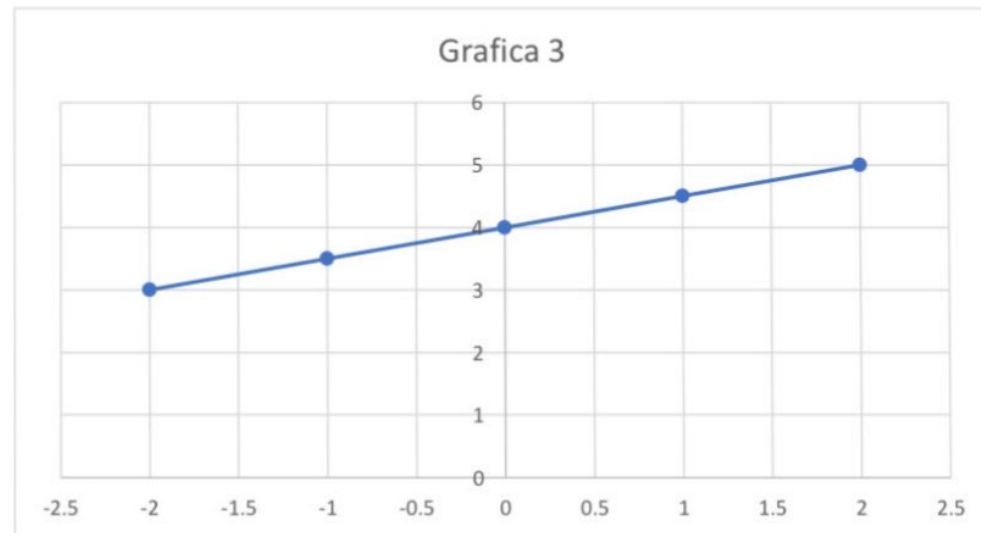


Eje x Eje y

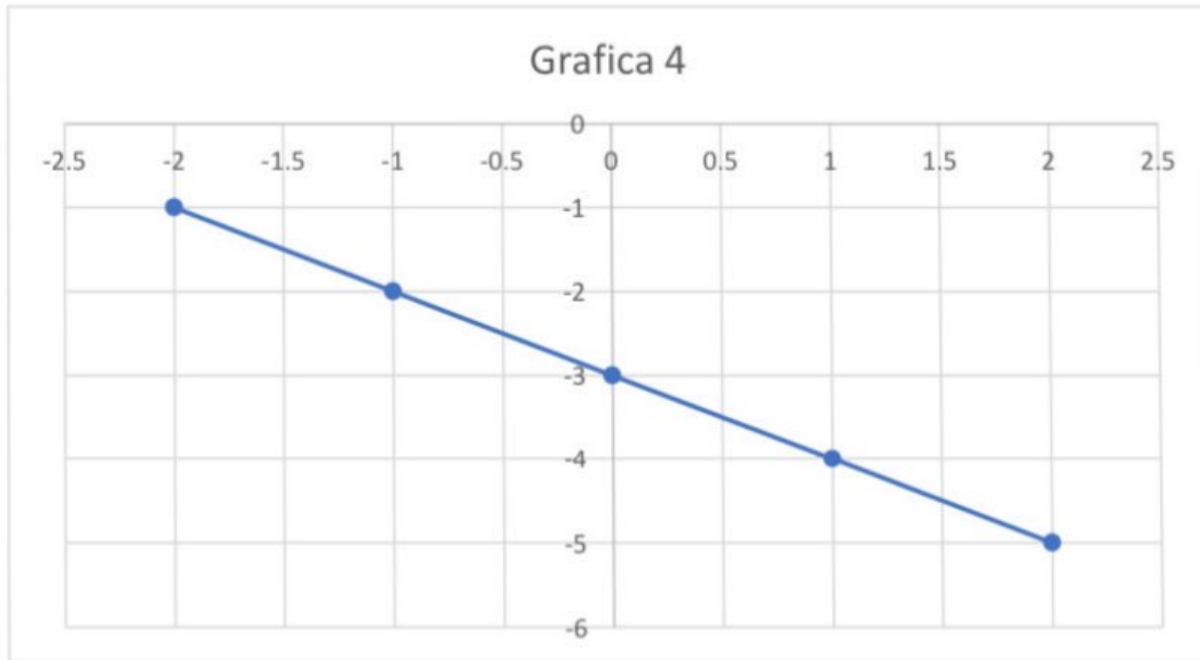
2	1
1	3
0	5
-1	7
-2	9



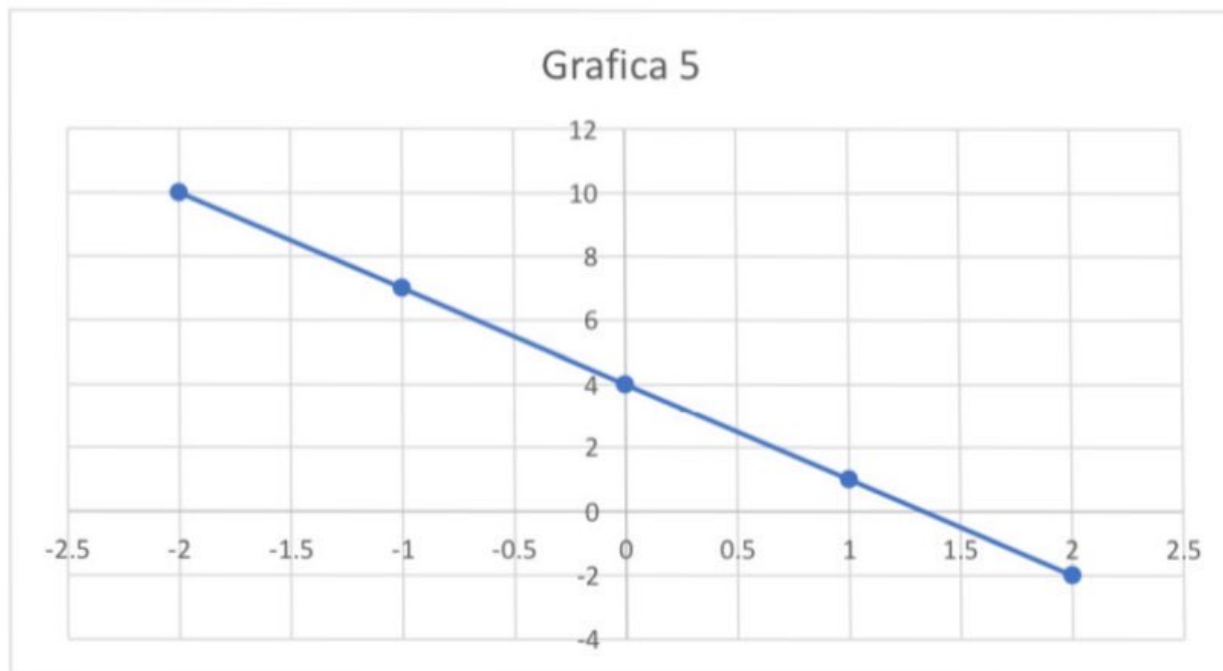
Eje x	Eje y
2	5
1	4.5
0	4
-1	3.5
-2	3









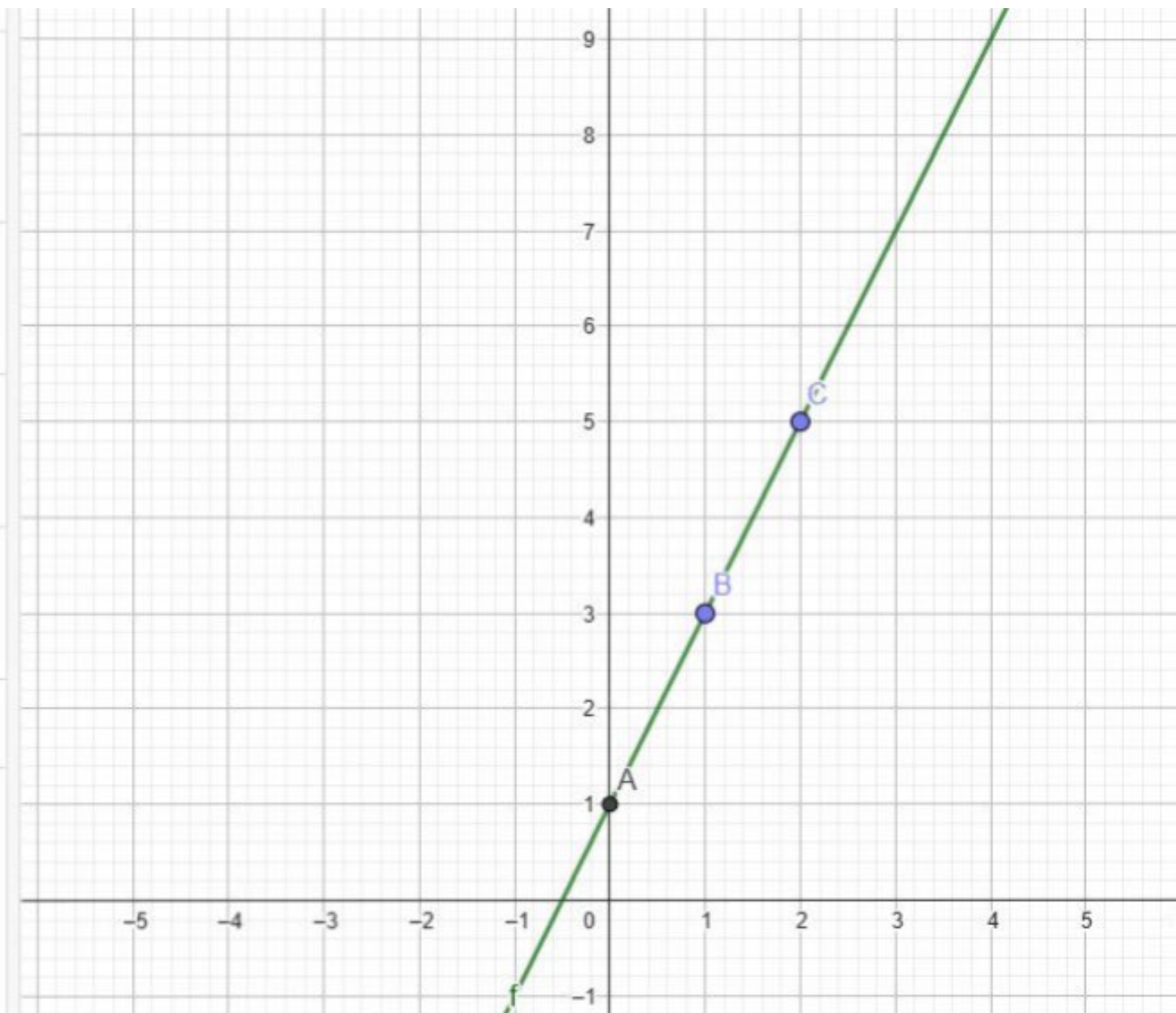
Eje x	Eje y
2	-5
1	-4
0	-3
-1	-2
-2	-1



Eje x	Eje y
2	-2
1	1
0	4
-1	7
-2	10



	$f(x) = \frac{2x}{1} + 1$	⋮
	Punto	
	A = Interseca(f, EjeY, 1) = (0, 1)	⋮
	B = Punto(f) = (1, 3)	⋮ ▶
	C = Punto(f) = (2, 5)	⋮ ▶
	Entrada...	



Función

$$f(x) = \frac{3x}{1} - 2$$

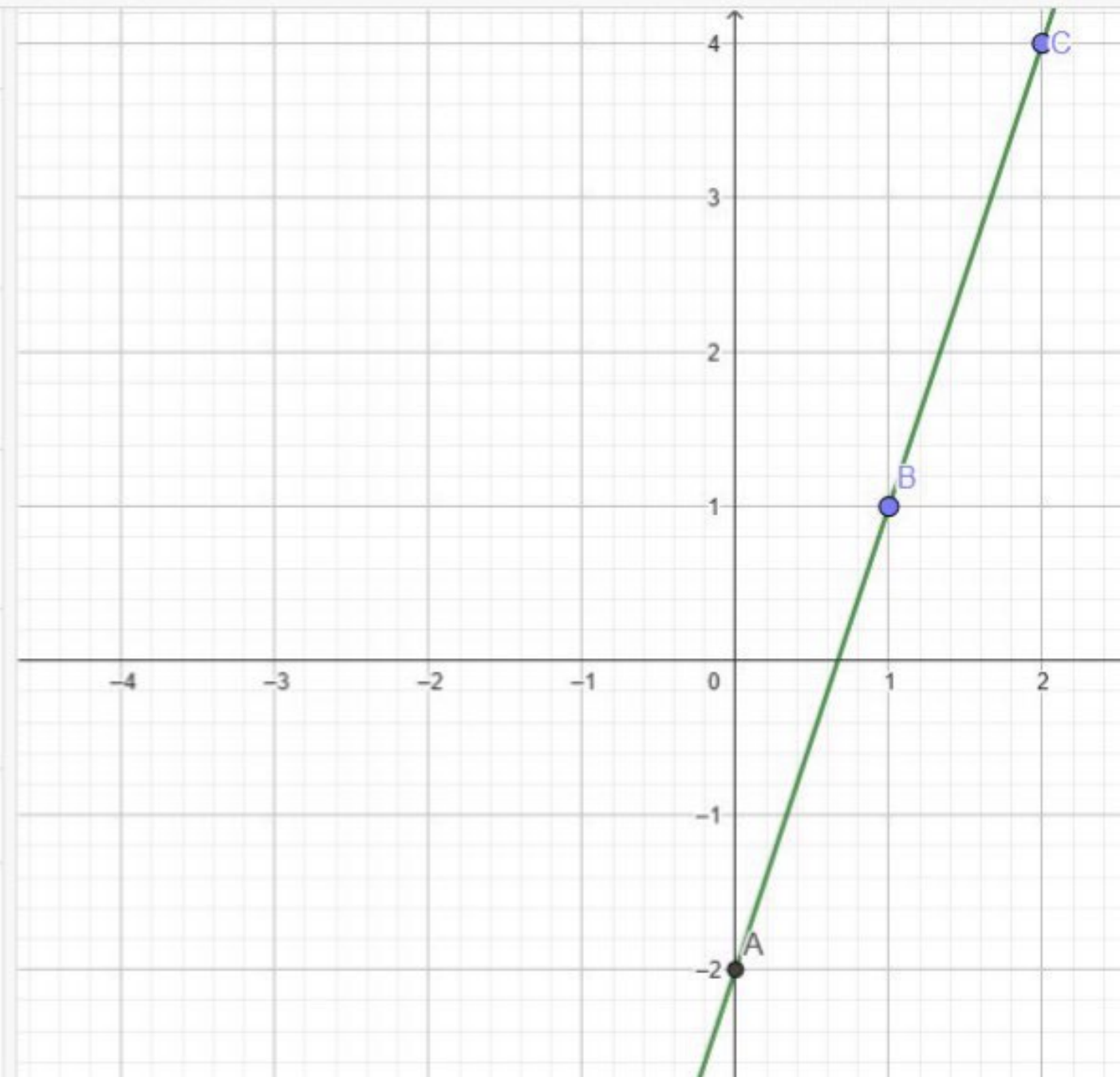
Punto

$$A = \text{Interseca}(f, \text{EjeY}, 1)$$
$$= (0, -2)$$

$$B = \text{Punto}(f)$$
$$= (1, 1)$$

$$C = \text{Punto}(f)$$
$$= (2, 4)$$

Entrada...



- Función

$f(x) = \frac{5x}{1} + 4$

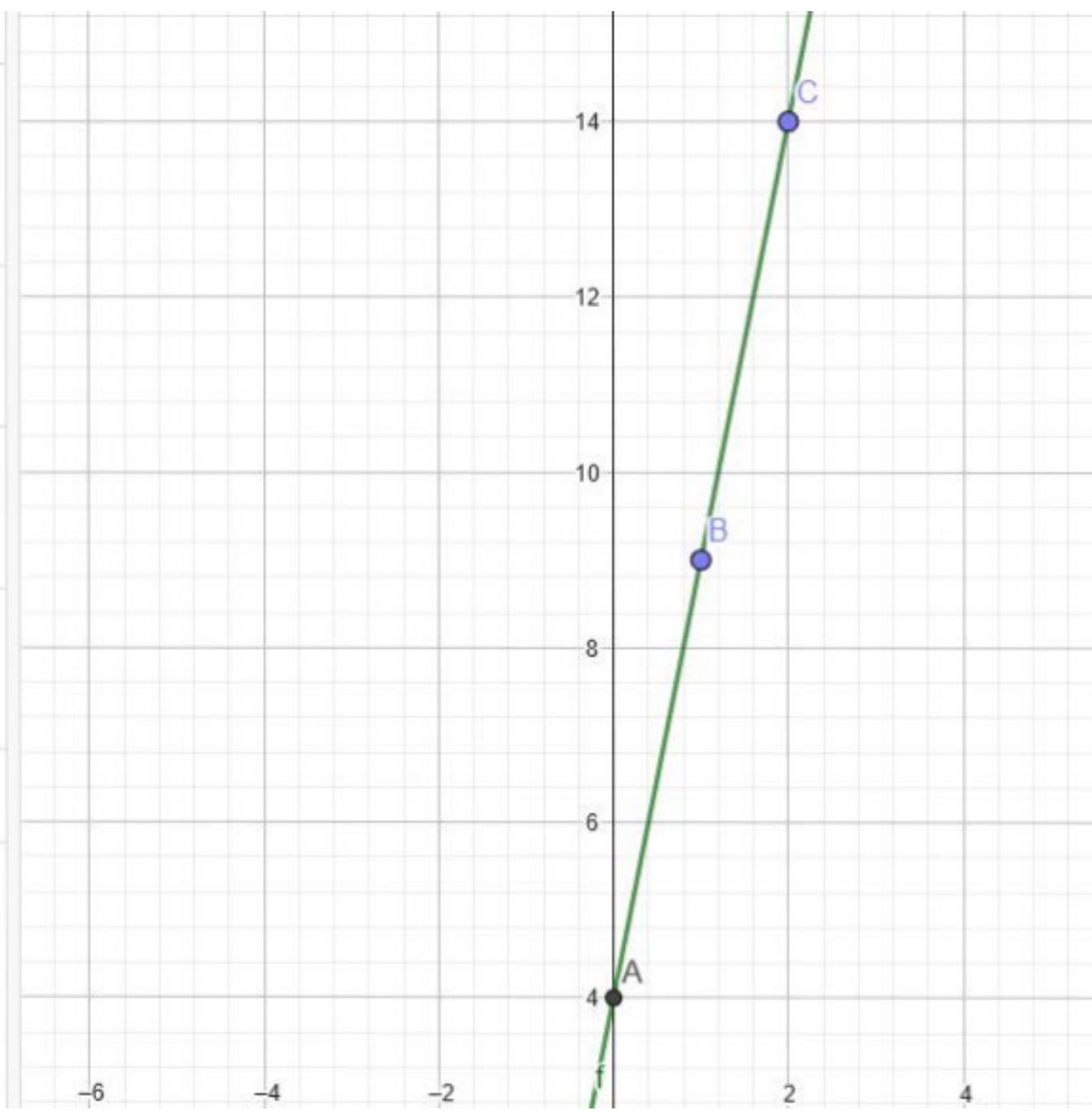
- Punto

A = Interseca(f, EjeY, 1)
= (0, 4)

B = Punto(f)
= (1, 9)

C = Punto(f)
= (2, 14)

+ Entrada...



- Función

$f(x) = \frac{-x}{1} + 3$

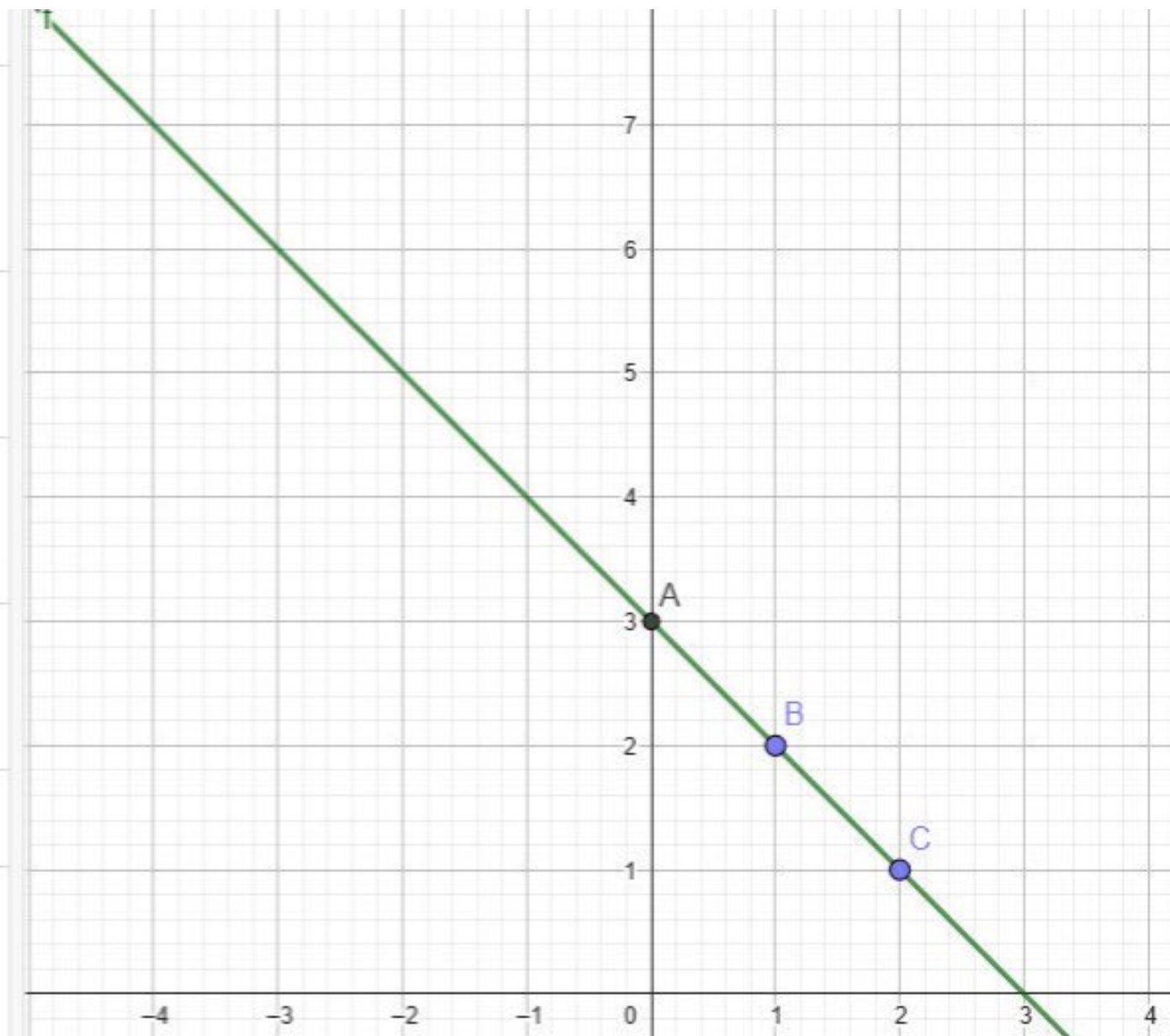
- Punto

A = Interseca(f, EjeY, 1)
= (0, 3)

B = Punto(f)
= (1, 2)

C = Punto(f)
= (2, 1)

+ Entrada...



- Función



$$f(x) = \frac{6x}{1} - 1$$



- Punto



$$A = \text{Interseca}(f, \text{EjeY}, 1)$$
$$= (0, -1)$$



$$B = \text{Punto}(f)$$
$$= (1, 5)$$



$$C = \text{Punto}(f)$$
$$= (2, 11)$$



Entrada...

