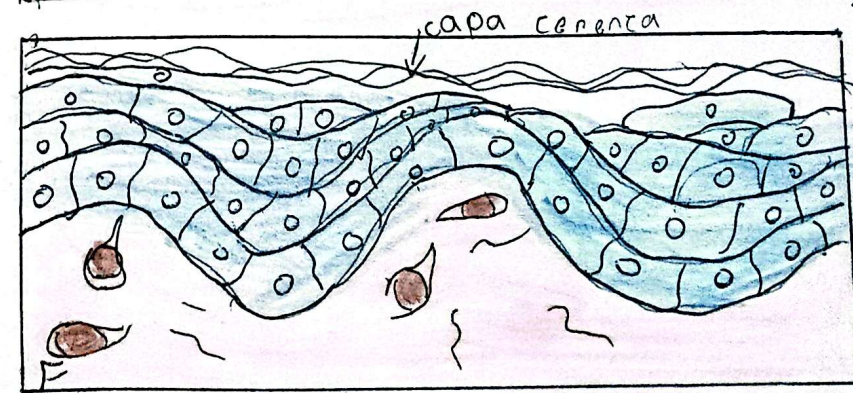
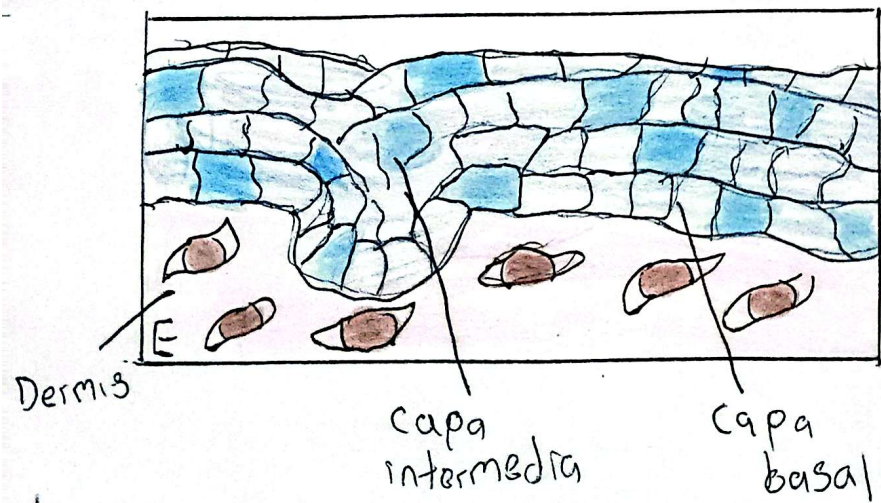
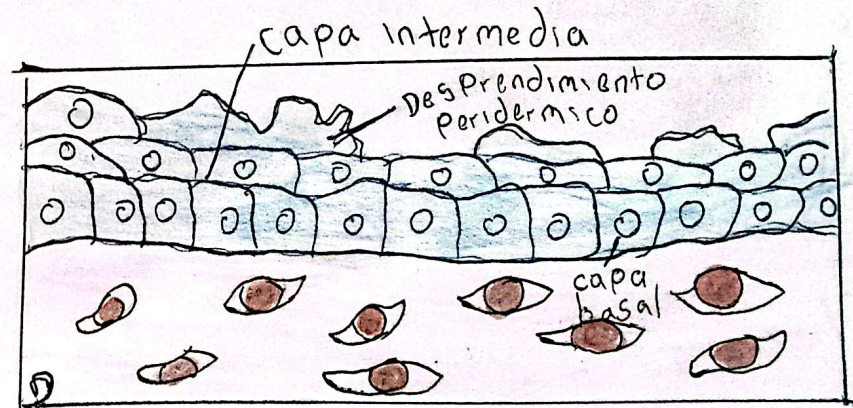
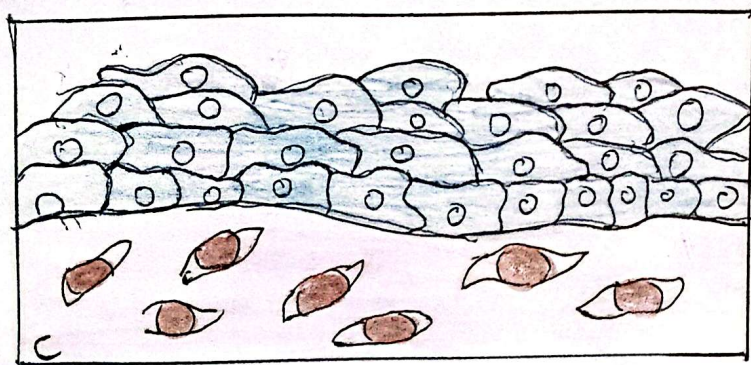
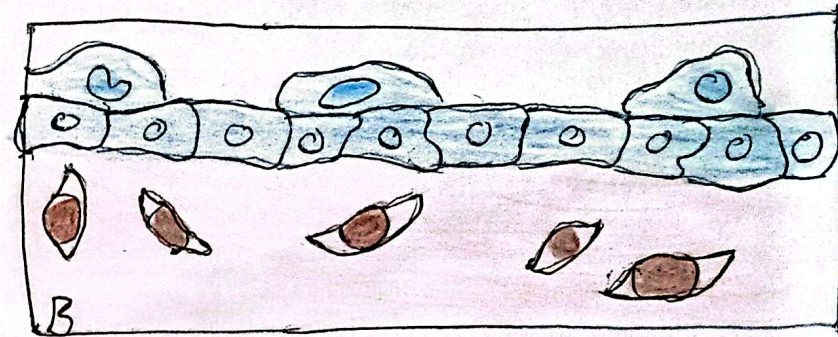
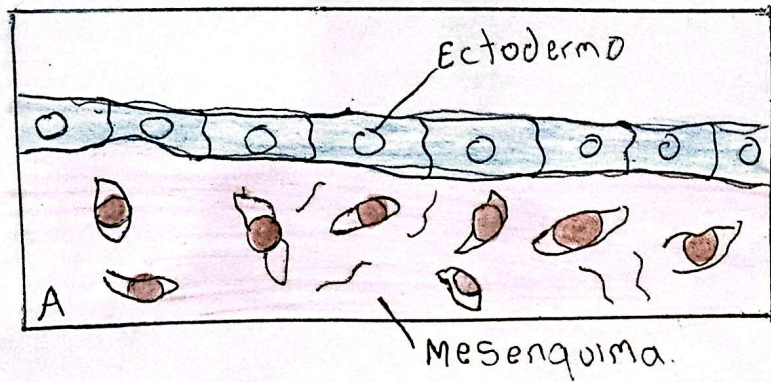
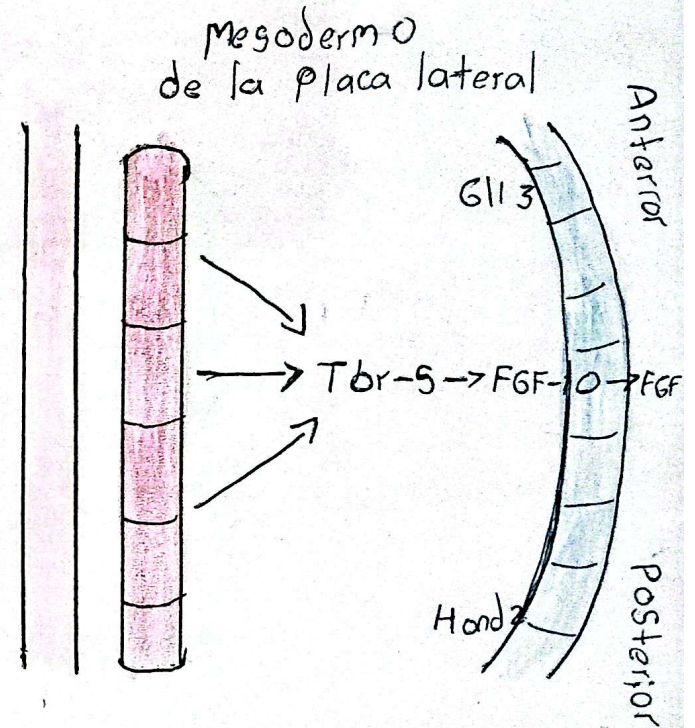
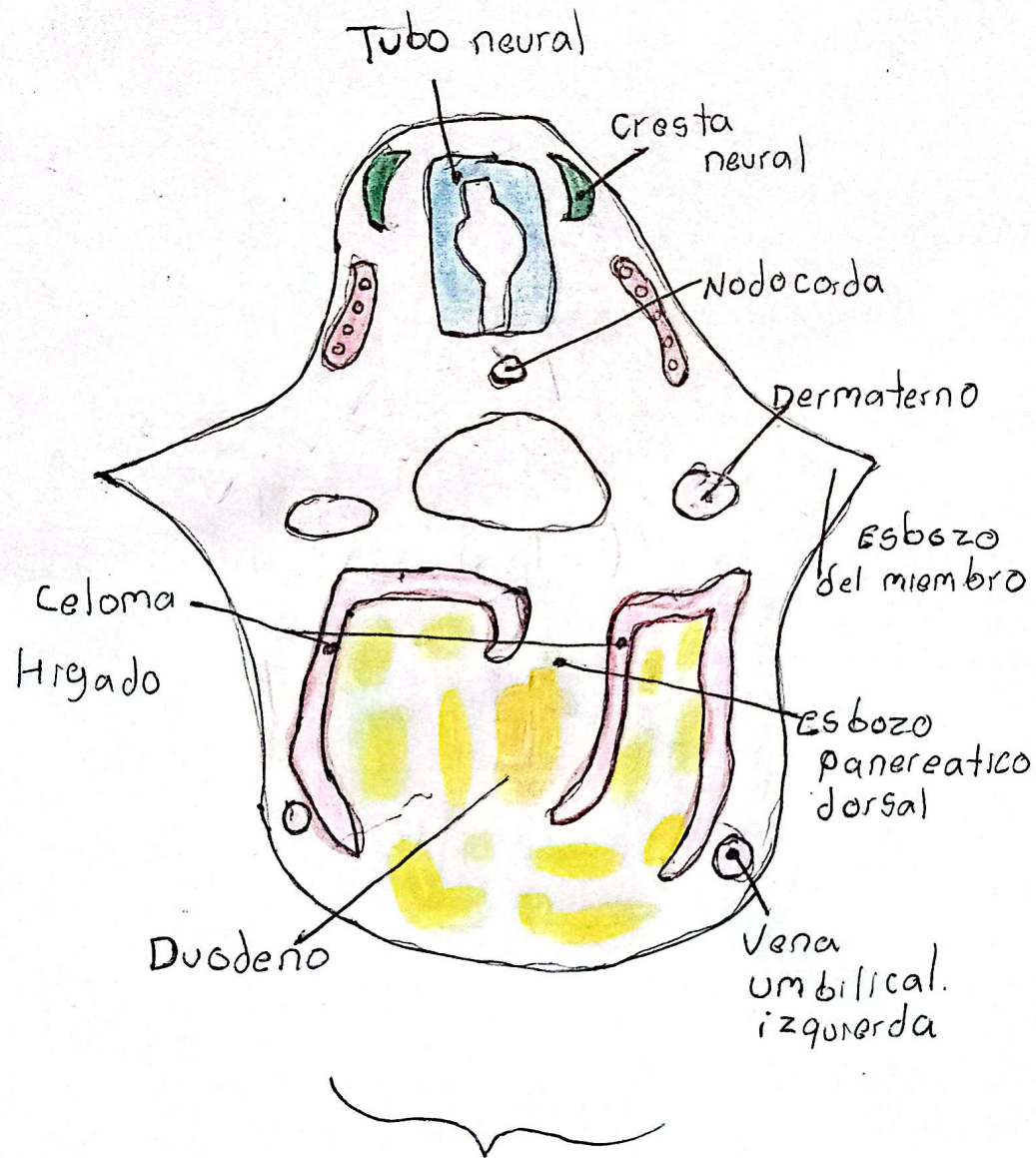


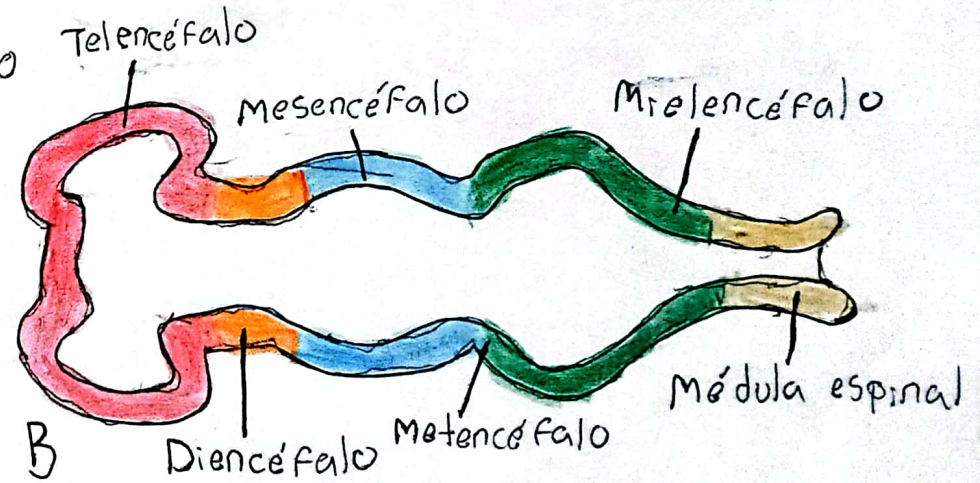
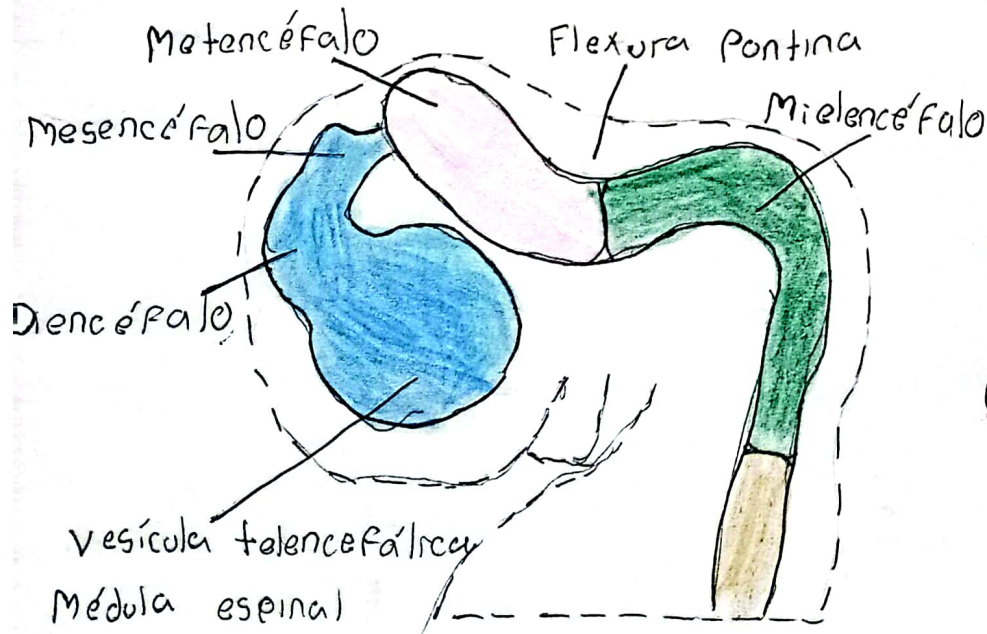
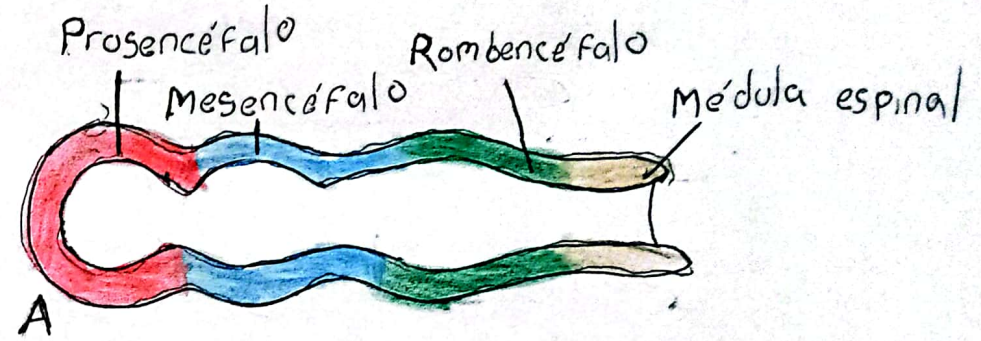
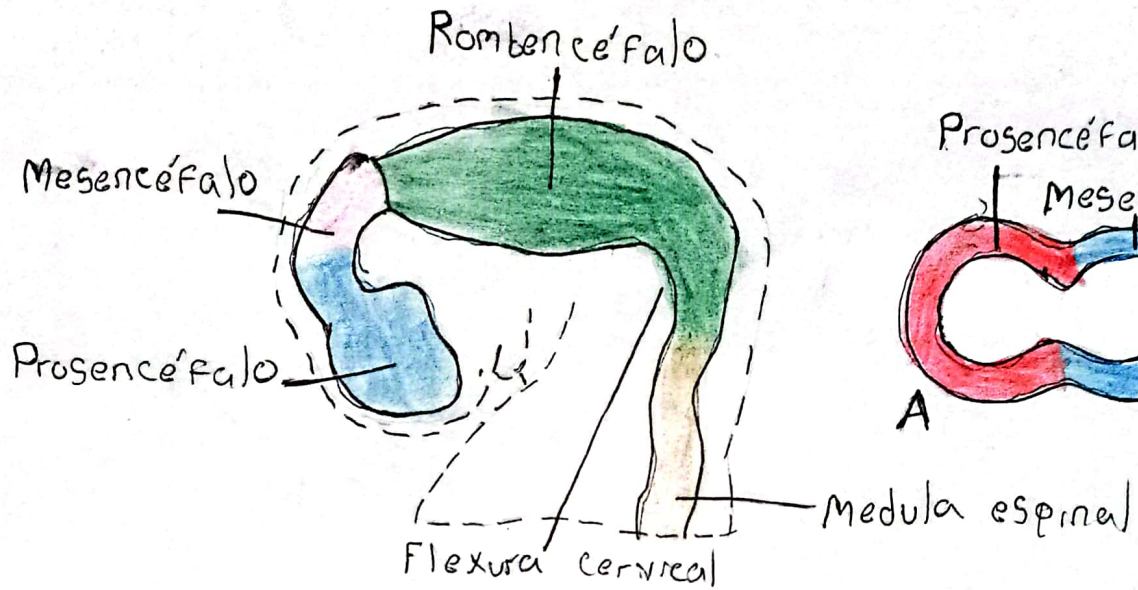
Sistemas tegumentario, esquelético y muscular.



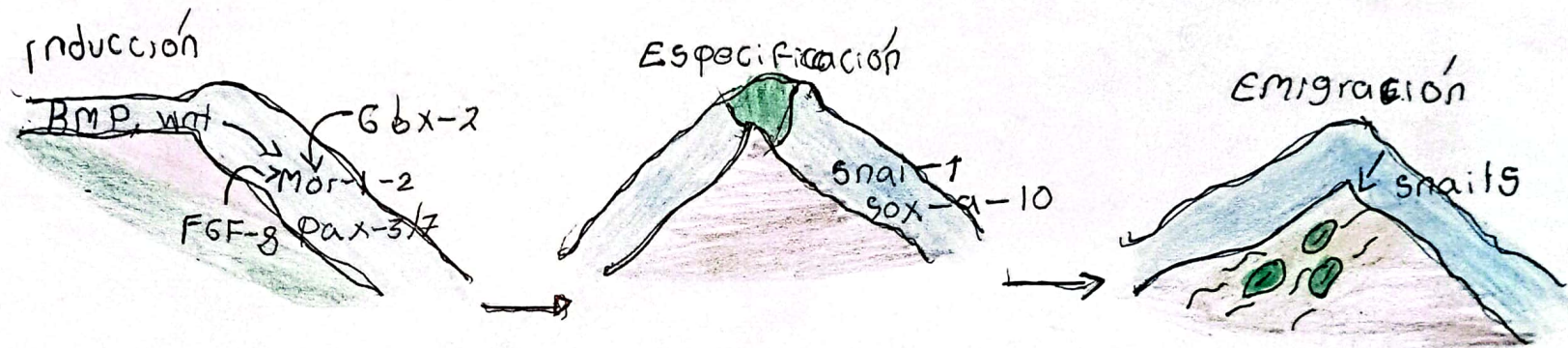
Desarrollo de los extremidades



Sistema Nervioso



Cresta neural



Las señales inductivas ectodérmicas son las proteínas morfogenéticas oseas (BMP) y los Wnts. El factor de crecimiento fibroblástico partierpa en la inducción de la cresta neural.

Perdida de N-cam
E-cadherinas
y N-cadherinas

Órganos de los sentidos

