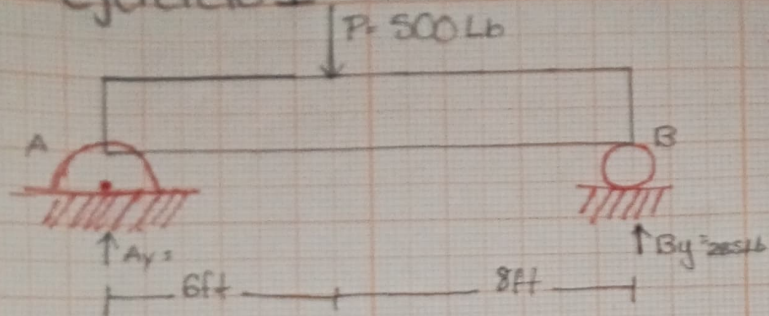


Ejercicio 1

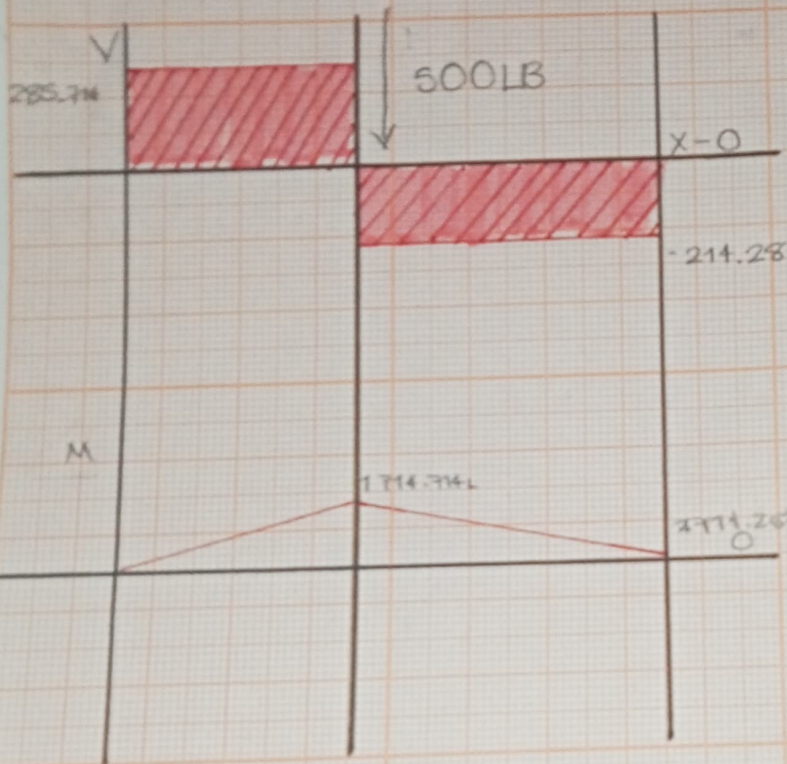


Paso 1

$$500 \text{ lb}(6 \text{ ft}) + 14 \text{ ft} B_y = 0$$

$$3000 + 14 B_y = 0$$

$$B_y = \frac{3000}{14} = 214.285 \text{ lb}$$



Paso 2

$$-500 + 214.285 \text{ lb} = -285.714$$

$$A_y - 285.714 = 0 \Rightarrow A_y = 285.714$$

Paso 3

$$285.714 \times 6 = 1714.285$$

$$214.285 \times 8 = 1714.28 \text{ lb-ft}$$