

DAILY ROUTINES

MONDAY

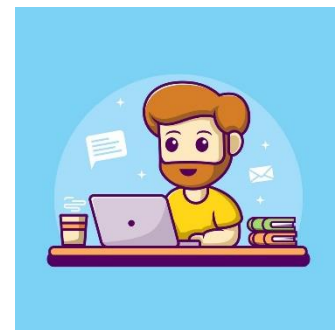
ME:

- I always get up at 8:00 a.m.
- I always go to school at 10:00 a.m.
- I always have breakfast at school at 11:00 am
- I always have classes at the university from 12:00 to 7:00 pm
- I always have dinner at 8:00 pm
- I always take a bath at 10:00 pm
- I always fall asleep at 12:00 am



DAD:

- He always wakes up at 6:00am
- He always takes my brothers to school at 7:00 am.
- He always takes my mom to work at 8:30 am.
- He always goes to work at 9:00am
- He always has breakfast at 11:00 am
- He always brings my brothers from school at 1:00pm.
- He always brings my mom home from work at 4:00 p.m.
- He always eats at 5:00 pm
- He will always continue working at 6:00 pm



-He always returns from work at 12:00 am

MOM:

-she always gets up at 6:00am

-She always goes to work at 8:30am.

-she always leaves work at 4:00pm

-she always eats at 5:00

-she always falls asleep at 10:00pm



TUESDAY.

ME:

- I always get up at 8:00 a.m.

-I always go to school at 10:00 a.m.

-I always have breakfast at school at 11:00 am

-I always have classes at the university from 12:00 to 7:00 pm

-I always have dinner at 8:00 pm

-I always take a bath at 10:00 pm

-I always fall asleep at 12:00 am



DAD:

-He always wakes up at 6:00am

-He always takes my brothers to school at 7:00 am.

-He always takes my mom to work at 8:30 am.

-He always goes to work at 9:00am

-He always has breakfast at 11:00 am

-He always brings my brothers from school at 1:00pm.

-He always brings my mom home from work at 4:00 p.m.

-He always eats at 5:00 pm



-He will always continue working at 6:00 pm

-He always returns from work at 12:00 am

MOM:

-she always gets up at 6:00am

-She always goes to work at 8:30am.

-she always leaves work at 4:00pm

-she always eats at 5:00

-she always falls asleep at 10:00pm



WEDNESDAY.

ME:

- I always get up at 8:00 a.m.

-I always go to school at 10:00 a.m.

-I always have breakfast at school at 11:00 am

-I always have classes at the university from 12:00 to 7:00 pm

-I always have dinner at 8:00 pm

-I always take a bath at 10:00 pm

-I always fall asleep at 12:00 am

DAD:

-He always wakes up at 6:00am

-He always takes my brothers to school at 7:00 am.


-He always takes my mom to work at 8:30 am.

-He always goes to work at 9:00am

-He always has breakfast at 11:00 am

-He always brings my brothers from school at 1:00pm.





-He always brings my mom home from work at 4:00 p.m.

-He always eats at 5:00 pm

-He will always continue working at 6:00 pm

-He always returns from work at 12:00 am

MOM:

-she always gets up at 6:00am

-She always goes to work at 8:30am.

-she always leaves work at 4:00pm

-she always eats at 5:00

-she always falls asleep at 10:00pm

THURSDAY.

ME:

- I always get up at 8:00 a.m.

-I always go to school at 10:00 a.m.

-I always have breakfast at school at 11:00 am

-I always have classes at the university from 12:00 to 7:00 pm

-I always have dinner at 8:00 pm

-I always take a bath at 10:00 pm

-I always fall asleep at 12:00 am


DAD:

-He always wakes up at 6:00am

-He always takes my brothers to school at 7:00 am.

-He always takes my mom to work at 8:30 am.

-He always goes to work at 9:00am

- 
- He always has breakfast at 11:00 am
 - He always brings my brothers from school at 1:00pm.
 - He always brings my mom home from work at 4:00 p.m.
 - He always eats at 5:00 pm
 - He will always continue working at 6:00 pm
 - He always returns from work at 12:00 am

MOM:

- she always gets up at 6:00am
- She always goes to work at 8:30am.
- she always leaves work at 4:00pm
- she always eats at 5:00
- she always falls asleep at 10:00pm


FRIDAY.

ME:

- I always get up at 8:00 a.m.
- I always go to school at 10:00 a.m.
- I always have breakfast at school at 11:00 am
- I always have classes at the university from 12:00 to 7:00 pm
- I always have dinner at 8:00 pm
- I always take a bath at 10:00 pm
- I always fall asleep at 12:00 am

DAD:

- He always wakes up at 6:00am
- He always takes my brothers to school at 7:00 am.

- 
- He always takes my mom to work at 8:30 am.
 - He always goes to work at 9:00am
 - He always has breakfast at 11:00 am
 - He always brings my brothers from school at 1:00pm.
 - He always brings my mom home from work at 4:00 p.m.
 - He always eats at 5:00 pm
 - He will always continue working at 6:00 pm
 - He always returns from work at 12:00 am

MOM:

- she always gets up at 6:00am
- She always goes to work at 8:30am.
- she always leaves work at 4:00pm
- she always eats at 5:00
- she always falls asleep at 10:00pm


SATURDAY.

ME:

- I always get up at 8:00 a.m.
- I always go to school at 10:00 a.m.
- I always have breakfast at school at 11:00 am
- I always have classes at the university from 12:00 to 7:00 pm
- I always have dinner at 8:00 pm
- I always take a bath at 10:00 pm
- I always fall asleep at 12:00 am

DAD:

- He always wakes up at 6:00am



-He always takes my brothers to school at 7:00 am.

-He always takes my mom to work at 8:30 am.

-He always goes to work at 9:00am

-He always has breakfast at 11:00 am

-He always brings my brothers from school at 1:00pm.

-He always brings my mom home from work at 4:00 p.m.

-He always eats at 5:00 pm

-He will always continue working at 6:00 pm

-He always returns from work at 12:00 am

MOM:

-she always gets up at 6:00am

-She always goes to work at 8:30am.

-she always leaves work at 4:00pm

-she always eats at 5:00

-she always falls asleep at 10:00pm

SUNDAY.

ME:

- I always get up at 8:00 a.m.

-I always go to school at 10:00 a.m.

-I always have breakfast at school at 11:00 am

-I always have classes at the university from 12:00 to 7:00 pm

-I always have dinner at 8:00 pm

-I always take a bath at 10:00 pm

-I always fall asleep at 12:00 am



DAD:

- He always wakes up at 6:00am
- He always takes my brothers to school at 7:00 am.
- He always takes my mom to work at 8:30 am.
- He always goes to work at 9:00am
- He always has breakfast at 11:00 am
- He always brings my brothers from school at 1:00pm.
- He always brings my mom home from work at 4:00 p.m.
- He always eats at 5:00 pm
- He will always continue working at 6:00 pm
- He always returns from work at 12:00 am

MOM:

- she always gets up at 6:00am
- She always goes to work at 8:30am.
- she always leaves work at 4:00pm
- she always eats at 5:00
- she always falls asleep at 10:00pm