

“
modulo
”

María José Figueroa
Solorzano

Luis Enrique meneses

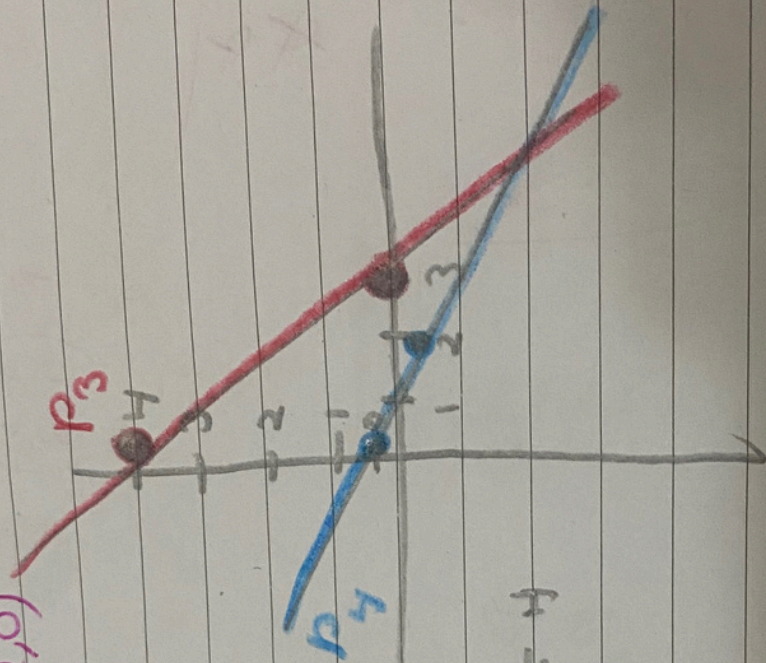
WDS

introduccion al
cálculo
diferencial

$P_3(3, 4); P_4(2, 0)$

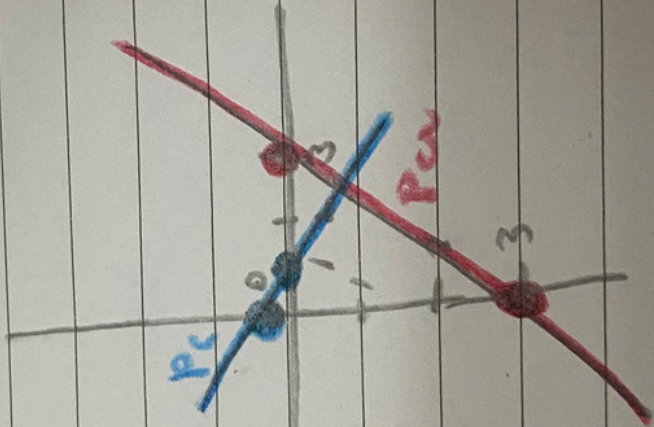
$\sum_{i=1}^n x_i y_i$
 $\sum_{i=1}^n x_i^2$

$$M = \frac{0 - 4}{2 - 3} = \frac{-4}{-1} = 4$$



2. $P_C(1,0)$; $P_A(3,-3)$

$$\begin{matrix} x_1 & y_1 \\ x_2 & y_2 \end{matrix}$$



$$M = \frac{-3 - 0}{3 - 1} = \frac{-3}{2} = -1.5$$

3. A (6,2); B (-2,2)

$$\begin{matrix} x_1 & y_1 \\ 6 & 2 \end{matrix}$$

$$\begin{matrix} x_2 & y_2 \\ -2 & 2 \end{matrix}$$

$$M = \frac{2-2}{-2-6} = \frac{0}{-8} = 0$$

