



# UDS

## Mi Universidad

**Student's name:** Iris Cristal Herrera Hernández.

**Topic:** Notes.

**Partial:** 1.

**Subject:** English I.

**Teacher's name:** Alejandra Vidal Escandón.

**Degree:** Social Work.

**Quarter:** 1st grade.

**Pichucalco, Chiapas**

**Tuesday, december 03ht, 2024**

# ENGLISH

## WH

- Who? - ¿quien?
- What? - ¿qué?, ¿cuál?
- When? - ¿cuándo?
- Where? - ¿cuándo?
- Why? - ¿por qué?
- How? - ¿cómo?

### WH QUESTIONS

Las WH QUESTIONS sirven para preguntar información específica.

- |               |  |                   |
|---------------|--|-------------------|
| <b>WHEN?</b>  | When is your class? / ¿Cuándo es tu clase? | <b>Cuándo</b>     |
| <b>WHAT?</b>  | What is this? / ¿Qué es esto?              | <b>Qué / Cuál</b> |
| <b>WHO?</b>   | Who are you? / ¿Quién eres?                | <b>Quién</b>      |
| <b>WHERE?</b> | Where is Danna? / ¿Dónde está Danna?       | <b>Dónde</b>      |
| <b>WHY?</b>   | Why are you sad? / ¿Por qué estás triste?  | <b>Por qué</b>    |
| <b>HOW?</b>   | How are you? / ¿Cómo estás?                | <b>Cómo</b>       |



## CLOTHES FOR WORK / CLOTHES FOR LEISURE



## COLORS

- Amarillo (Yellow)
- Azul (Blue)
- Blanco (White)
- Dorado (Golden)
- Gris (Gray)
- Marrón (Brown)
- Naranja (Orange)
- Negro (Black)
- Plateado (Silver)
- Púrpura (Purple)
- Rojo (Red)
- Rosa (Pink)
- Verde (Green)
- Violeta (Violet)



## SUBJECT, POSSESSIVE ADJECTIVE, POSSESSIVE PRONOUN.

### Possessive Adjective or Pronoun?

- 1 This is my book. my/mine
- 2 This book is mine. my/mine
- 3 This is your pen. your/yours
- 4 This pen is yours. your/yours



Personal Pronouns	Possessive Adjectives	Possessive Pronouns
<b>I</b>	my	mine
<b>You</b>	your	yours
<b>He</b>	his	his
<b>She</b>	her	hers
<b>It</b>	its	its
<b>We</b>	our	ours
<b>You</b>	your	yours
<b>They</b>	their	theirs

## ACTION VERBS

An 'action verb' explains what the subject of the sentence is doing or has done.



# ENGLISH

## PRESENT CONTINUOUS

- \*affirmative: subject+to be+verb-ing+complement
- \*negative: subject+to be+not+verb-ing+complement
- \*interrogative: to be+subject+verb-ing+complement

Change of sentence in Present Continuous Tense			
Positive	Negative	Interrogative	Negative-Interrogative
I am playing chess.	I am not playing chess.	Am I playing chess?	Am I not playing chess?
We are playing chess.	We are not playing chess.	Are we playing chess?	Are we not playing chess?
You are playing chess.	You are not playing chess.	Are you playing chess?	Are you not playing chess?
He is playing chess.	He is not playing chess.	Is he playing chess?	Is he not playing chess?
She is playing chess.	She is not playing chess.	Is she playing chess?	Is she not playing chess?
It is playing chess.	It is not playing chess.	Is it playing chess?	Is it not playing chess?
They are playing chess.	They are not playing chess.	Are they playing chess?	Are they not playing chess?
Row is playing chess.	Row is not playing chess.	Is Row playing chess?	Is Row not playing chess?
Bandy and Shanti are playing chess.	Bandy and Shanti are not playing chess.	Are Bandy and Shanti playing chess?	Are not Bandy and Shanti playing chess?

SPELLING RULES FOR VERBS IN "ING" FORM	
EASE ICKM	"ING" FORM
Cook - Eat - Speak	Cooking - Eating - Speaking
Buy - Enjoy - Try	Buying - Enjoying - Trying (first letter "t" is also retained)
Go - Do	Going - Doing
Drive - Share - Write	Driving - Sharing - Writing (first letter "t" is also retained)
Lay - Lie	Laying - Lying
Skip* - Put* - Swim*	Skiing - Putting - Swimming

\*The final three letters are "consonant - vowel - consonant", that's why we have double consonant "pp - tt - ss".

## SPELLING RULES

An -e at the end of the word is removed, but -ee, -oe and -ye remain unchanged.  
example: come-coming  
but: agree-agreeing

## SIGNAL WORDS: ENGLISH PRESENT CONTINUOUS TENSE

signal words can help us decide which tense to use. the signal words for the present progressive are:  
 \*at the moment  
 \*now, just now, right now  
 \*listen!  
 \*look!

## PRESENT CONTINUOUS TENSE

POSITIVE FORM		NEGATIVE FORM	
Subj + am/is/are + Ving	Subj + am/is/are + NOT + Ving	Am I + am not + starting	Am I not + starting
I + am + starting	I + am not + starting	Are we + are not + starting	Are we not + starting
We + are + starting	We + are not + starting	Are you + are not + starting	Are you not + starting
He + is + starting	He + is not + starting	Is he + is not + starting	Is he not + starting
She + is + starting	She + is not + starting	Is she + is not + starting	Is she not + starting
It + is + starting	It + is not + starting	Is it + is not + starting	Is it not + starting
They + are + starting	They + are not + starting	Are they + are not + starting	Are they not + starting
Row + is + starting	Row + is not + starting	Is Row + is not + starting	Is Row not + starting
Bandy and Shanti + are + starting	Bandy and Shanti + are not + starting	Are Bandy and Shanti + are not + starting	Are not Bandy and Shanti + are not + starting

QUESTION FORM	
Am I + am/is/are + Subj + Ving	starting
Are we + are + starting	starting
Are you + are + starting	starting
Is he + is + starting	starting
Is she + is + starting	starting
Is it + is + starting	starting
Are they + are + starting	starting
Is Row + is + starting	starting
Are Bandy and Shanti + are + starting	starting

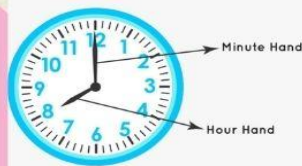
www.englishstudypage.com Like facebook.com/englishstudypage

## TIMES OF THE DAY



## HOW TO READ THE TIME

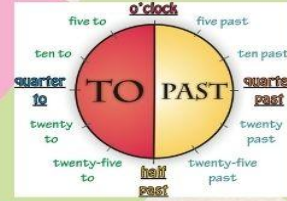
hour (s)  
minute (s)





# ENGLISH

## TIME IN ENGLISH.



### What is the meaning of...?

am (ante meridiem)	pm (post meridiem)
11:00 AM	11:00 PM
4:45 AM	4:45 PM
9:27 AM	9:27 PM

### 01:00 One o'clock

01:05 five past one	01:35 twenty-five to two
01:10 ten past one	01:40 twenty to two
01:15 a quarter past one	01:45 a quarter to two
01:20 twenty past one	01:50 ten to two
01:25 twenty-five past one	01:55 five to two
01:30 half past one	

## SIGNAL WORDS: ENGLISH PRESENT CONTINUOUS TENSE

signal words can help us decide which tense to use. the signal words for the present progressive are:

- \*at the moment
- \*now, just now, right now
- \*listen!
- \*look!

## PRESENT CONTINUOUS TENSE

POSITIVE FORM	NEGATIVE FORM
<b>Sbj + am/ is/ are + Ving</b>	<b>Sbj + am/ is/ are + NOT + Ving</b>
I am + am + starting	He is not + starting
You are + are + starting	She is not + starting
He is + is + starting	It is not + starting
She is + is + starting	We are not + starting
It is + is + starting	They are not + starting
We are + are + starting	
They are + are + starting	
I am cycling	He is not doing cycling

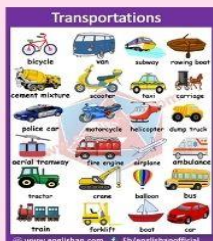
  

QUESTION FORM	
<b>Am/ is/ are + Sbj + Ving?</b>	<b>starting</b>
Am + starting	I
is + starting	He
is + starting	She
are + starting	It
are + starting	We
are + starting	They

You are cycling      Are you cycling?  
 Like     facebook.com/englishstudypage



## TRANSPORTATION



## bibliografia

(<http://iteslj.org/questions/transportation.html>)

<https://www.horobox.com/en/news-detail/what-is-time->

<https://atlassian.design/foundations/color-new>

<https://7esl.com/english-verbs/>