



**MAPA CONCEPTUAL:  
ASTHMA: A GLOBAL PROBLEM**

**MINA GUTIERREZ  
MARIA FERNANDA**

**MAESTRO: ENRIQUE EDUARDO  
ARREOLA JIMÉNEZ**

**UNIVERSIDAD DEL SURESTE**

**LICENCIATURA EN ENFERMERIA**

**INGLES IV**

**TAPACHULA, CHIAPAS**

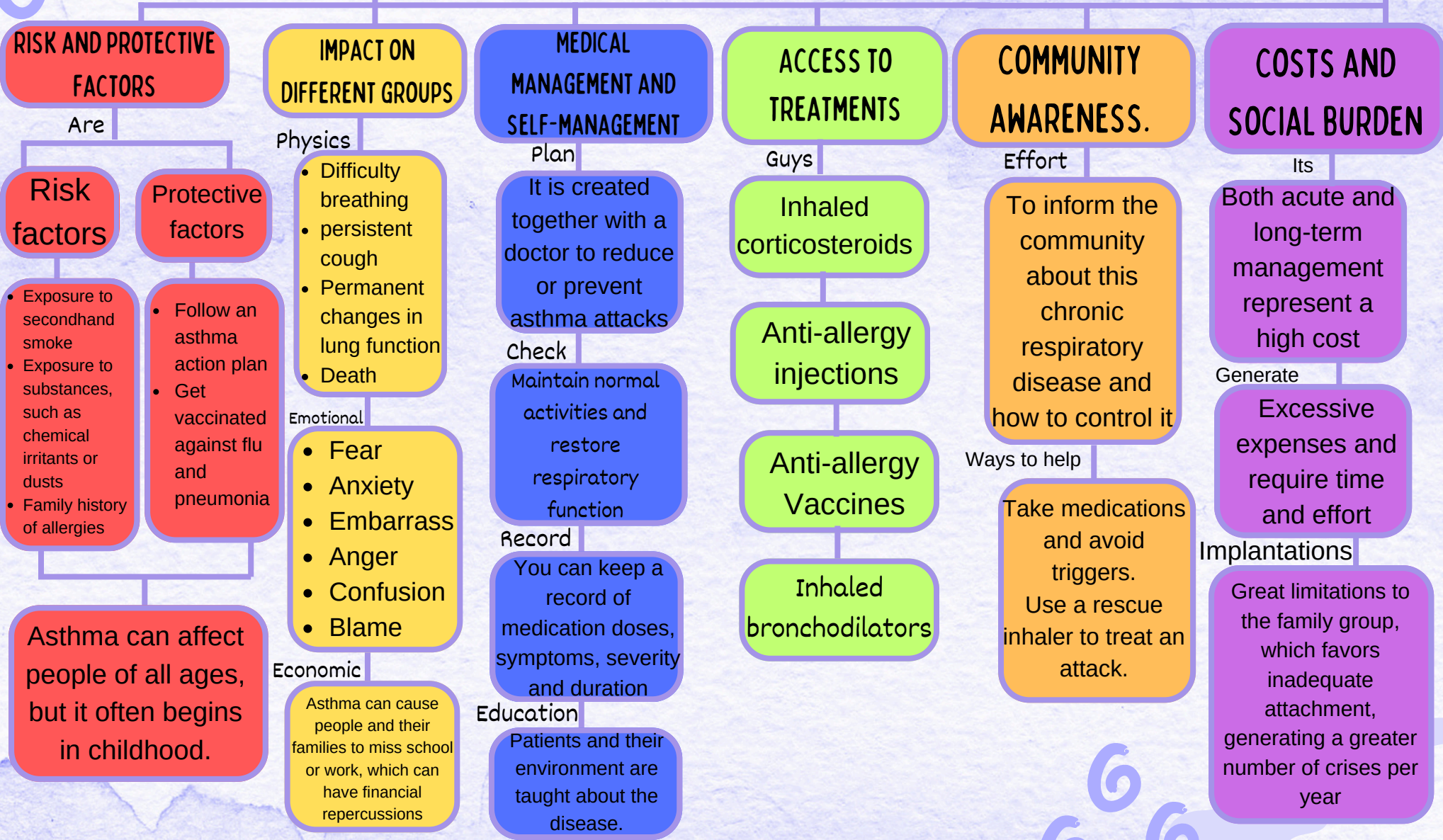
**02 DE NOVIEMBRE DEL 2024**

# ASTHMA: A GLOBAL PROBLEM

Is

Chronic disease that affects the airways of the lungs

Parts



## RISK AND PROTECTIVE FACTORS

Are

### Risk factors

- Exposure to secondhand smoke
- Exposure to substances, such as chemical irritants or dusts
- Family history of allergies

### Protective factors

- Follow an asthma action plan
- Get vaccinated against flu and pneumonia

Asthma can affect people of all ages, but it often begins in childhood.

## IMPACT ON DIFFERENT GROUPS

Physics

- Difficulty breathing
- persistent cough
- Permanent changes in lung function
- Death

Emotional

- Fear
- Anxiety
- Embarrass
- Anger
- Confusion
- Blame

Economic

Asthma can cause people and their families to miss school or work, which can have financial repercussions

## MEDICAL MANAGEMENT AND SELF-MANAGEMENT

Plan

It is created together with a doctor to reduce or prevent asthma attacks

Check

Maintain normal activities and restore respiratory function

Record

You can keep a record of medication doses, symptoms, severity and duration

Education

Patients and their environment are taught about the disease.

## ACCESS TO TREATMENTS

Guys

Inhaled corticosteroids

Anti-allergy injections

Anti-allergy Vaccines

Inhaled bronchodilators

## COMMUNITY AWARENESS.

Effort

To inform the community about this chronic respiratory disease and how to control it

Ways to help

Take medications and avoid triggers.  
Use a rescue inhaler to treat an attack.

## COSTS AND SOCIAL BURDEN

Its

Both acute and long-term management represent a high cost

Generate

Excessive expenses and require time and effort

Implantations

Great limitations to the family group, which favors inadequate attachment, generating a greater number of crises per year

# BIBLIOGRAFIA

- Alizadeh, B., Safdari, R., Zolnoori, M., & Bashiri , A. Developing an Intelligent System for Diagnosis of Asthma Based on Artificial. 2015 Neural Network.
- Puig-Junoy J, Pascual-Argenté N. Costes socioeconómicos del asma en la Unión Europea, Salud Pública.2017, Estados unidos y Canada
- Boulet L-P, Godbout K. Diagnosis of asthma in adults. In: Burks AW, Holgate ST, O'Hehir RE, et al, eds. Middleton's Allergy: Principles and Practice. 2020. 9th ed. Philadelphia, PA: Elsevier.
- Traductor google: <https://translate.google.com/?hl=es-419>