



QUALITIES AND DEFECTS OF DOG BREEDS

Velazquez Lopez Julissa

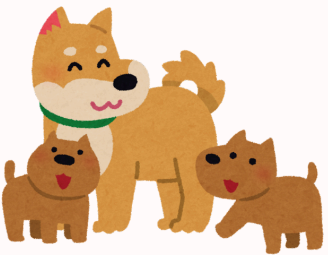
University of the southeast

Veterinary Medicine And Animal Husbandry

Arreola Jiménez Eduardo Enrique

Tapachula . Chiapas , october 12 ,2024

QUALITIES AND DEFECTS OF DOG BREEDS



LEONBERGER

PHYSICAL CONSTITUTION
Well proportioned in spite of its size.

MAIN PHYSICAL DEFECTS
Head resembling a St. Bernard; tail curled over the back; white markings on the coat.

QUALITIES
• Fond of its Owner
• Highly intelligent

DEFECTS
• Wary of strangers cannot bear to be chained up.

NOTE
• Avalanche dog.

ST. BERNARD

PHYSICAL CONSTITUTION
Sturdy, strong and muscular.

MAIN PHYSICAL DEFECTS
Sway back; tail curled over the back; curly or excessively long coat; self-coloured coat or lack of white.

QUALITIES
• Docile
• Faithful
• Courageous and
• Generous

DEFECTS
• Sometimes irritable in hot climates.

NOTE
• Mountain rescue.

NEWFOUNDLAND AND LANDSEER

PHYSICAL CONSTITUTION
Elegant in appearance, agile in movement.

MAIN PHYSICAL DEFECTS
Sway back; weak loins tail curved over the back in action; cow hocks; presence of dew claws; feet turning outwards.

QUALITIES
• Faithful and courageous.

DEFECTS
• None.

NOTE
• Sea rescue.

PYRENEAN MOUNTAIN DOG

PHYSICAL CONSTITUTION
Strong and muscular.

MAIN PHYSICAL DEFECTS
Excessively heavy head; pronounced stop; round; prominent eyes; undershot jaw; cow hocks; absence of those sets of dew claws at the back.

QUALITIES
• Gentle
• Calm
• Affectionate
• Courageous

DEFECTS
• None.

NOTE
• Excellent guard dog

BOXER

PHYSICAL CONSTITUTION
Strong and hardy. Agile in movement, proud of bearing.

MAIN PHYSICAL DEFECTS
Heavy appearance; light nose; light eyes; jaw showing; tongue and teeth visible when the mouth is shut; missing teeth; tail set low; white marking on the coat; covering more than one third of the total surface area.

QUALITIES
• Obedient and intelligent
• Easy to train.

DEFECTS
• Wary of strangers.

NOTE
• Excellent guard dog

DOBERMAN

PHYSICAL CONSTITUTION
Elegant and lithe in build, well muscled

MAIN PHYSICAL DEFECTS
Heavy appearance; excessively large head pronounced stop; light eyes overshot or undershot jaw; presence of dewlap; incorrect stance; straw colored coat, white markings on the chest tan markings not clearly defined.

QUALITIES
• Intelligent
• Lively
• Courageous
• Faithful easy to train.

DEFECTS
• Reacts aggressively to provocation

NOTE
• Excellent bodyguard

SCHNAUZER

PHYSICAL CONSTITUTION
Strong and hardy, compact in build

MAIN PHYSICAL DEFECTS
Wrinkles on the forehead; light eyes; undershot jaw; presence of dewlap; cow hocks; wavy coat; atypical colouring.

PHYSICAL CONSTITUTION
Strong and elegant, proud of bearing.

MAIN PHYSICAL DEFECTS
Snipy muzzle; missing teeth; overshot or undershot jaw; even bite; short neck; presence of dewlap; sway back; incorrect stance; curled tail; colour not conforming to the standard.

QUALITIES
• Lively
• Faithful, easily trainable

DEFECTS
• Sometimes Restless and dangerous with strangers.

NOTE
• Resistant to adverse weather conditions, killer of vermin.

GREAT DANES

PHYSICAL CONSTITUTION
Strong and hardy.

MAIN PHYSICAL DEFECTS
Undershot or overshot jaw; ears wide apart; sway back; hind legs not well angled; tail curled over the back; curly coat.

QUALITIES
• Obedient and faithful to its owner
• Docile and eventempered.

DEFECTS
• Suspicious of strangers.

NOTE
• The poorly developed sense of smell does allow it to recognize even its owner in the dark.

HOUWART

PHYSICAL CONSTITUTION
Strong but of rather heavy build.

MAIN PHYSICAL DEFECTS
Long muzzle with excessively drooping lips; narrow skull; light eyes light build; thin tail.

QUALITIES
• Intelligent
• Faithful to its owner.

DEFECTS
• Aggressive and dangerous with strangers.

NOTE
• Excellent guard dog.
• Good guard dog, even used by the police in some states.

ROTTWEILLER

BIBLIOGRAPHY

Chapou videgaray Adriana ,et al. Curso de comprensión de lectura para Medicina Veterinaria y Zootecnia. UNAM.