

 **UUDS**

Agrupación de datos y tabla de Frecuencias

7	8	5	10	9	10	5	12	8	6
10	11	6	5	10	11	10	5	9	13
8	12	8	8	10	15	7	6	8	8
5	6	9	7	14	8	7	5	5	14

Clase	x	f	fr	f
[5-7)	6	11	0.275	11
[7-9)	8	12	0.3	23
[9-11)	10	9	0.225	32
[11-13)	12	4	0.1	36
[13-15)	14	3	0.075	39
[15-17]	16	1	0.025	40
		40	1	

R=RONGO

K=INTERVALOS

A= AMPLITUD

R= xmax-xmin

k= $1+3.22\log 40$

A=R/K=10/6

R=15-5

K=6.15

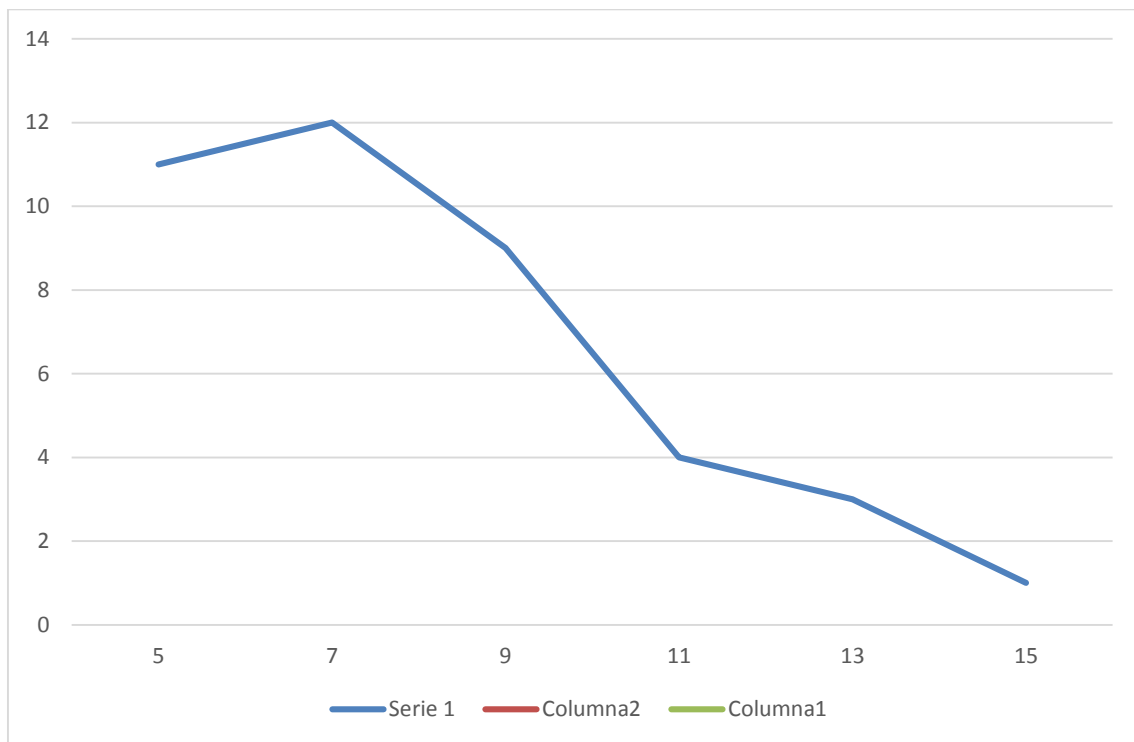
A=1.6 (2)

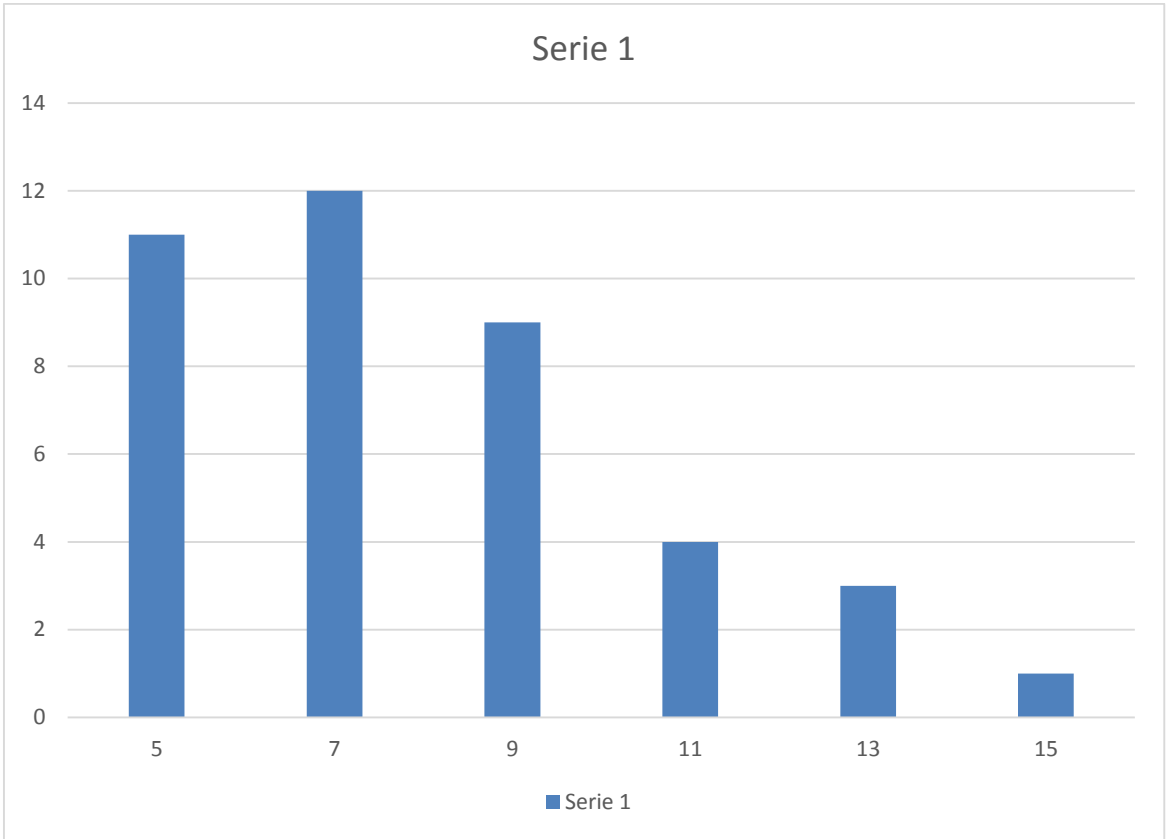
R=10

K=6

Histograma y polígono de frecuencias

Edades en años	fi
[5;7>	11
[7;9>	12
[9;11>	9
[11;13>	4
[13;15>	3
[15;17>	1
total	40





Cálculo de la media, mediana y moda para datos No Agrupados

A) 8, 11, 12, 15, 14, 7, 11, 9, 11

$$8+11+12+15+14+7+11+9+11=98/9=10.8 \quad \text{Media aritmética}=10.8$$

$$\cancel{7}, \cancel{8}, \cancel{9}, \cancel{11} \quad 11, 11, 12, 14, 15 = \quad \text{ME}=11$$

$$7, 8, 9, 11, 11, 11, 12, 14, 15 = \quad \text{mo}=11$$

B) 2, 1, 5, 3, 4, 8, 9, 5, 7, 5, =49/10=4.9 \quad \text{Media aritmética}=4.9

$$\cancel{1}, \cancel{2}, \cancel{3}, \cancel{4}, 5, 5, \cancel{5}, \cancel{7}, \cancel{8}, \cancel{9} = 5+5=10/2=5 \quad \text{ME}=5$$

$$1, 2, 3, 4, 5, 5, 5, 7, 8, 9 = \quad \text{MO}5$$

MEDIDAS DE DISPERSIÓN

2, 2, 4, 4, 5, 5, 6

Media aritmética=4

$$DM = \frac{|2-4| + |2-4| + |4-4| + |4-4| + |5-4| + |5-4| + |6-4|}{7}$$

$$DM = \frac{|-2| + |-2| + |0| + |0| + |1| + |1| + |2|}{7}$$

$$DM = \frac{2+2+0+0+1+1+2}{7} = \frac{8}{7} = 1.14$$

37°, 38°, 39°, 40°, 41°,

$$DM = \frac{|37^\circ - 39^\circ| + |38^\circ - 39^\circ| + |39^\circ - 39^\circ| + |40^\circ - 39^\circ| + |41^\circ - 39^\circ|}{5}$$

$$DM = \frac{|-2^\circ| + |-1^\circ| + |0^\circ| + |1^\circ| + |2^\circ|}{5}$$

$$DM = \frac{2^\circ + 1^\circ + 0^\circ + 1^\circ + 2^\circ}{5} = \frac{6}{5} = 1.2^\circ$$