 **UDS**

ORGANOS DEL ABDOMEN

MATERIA

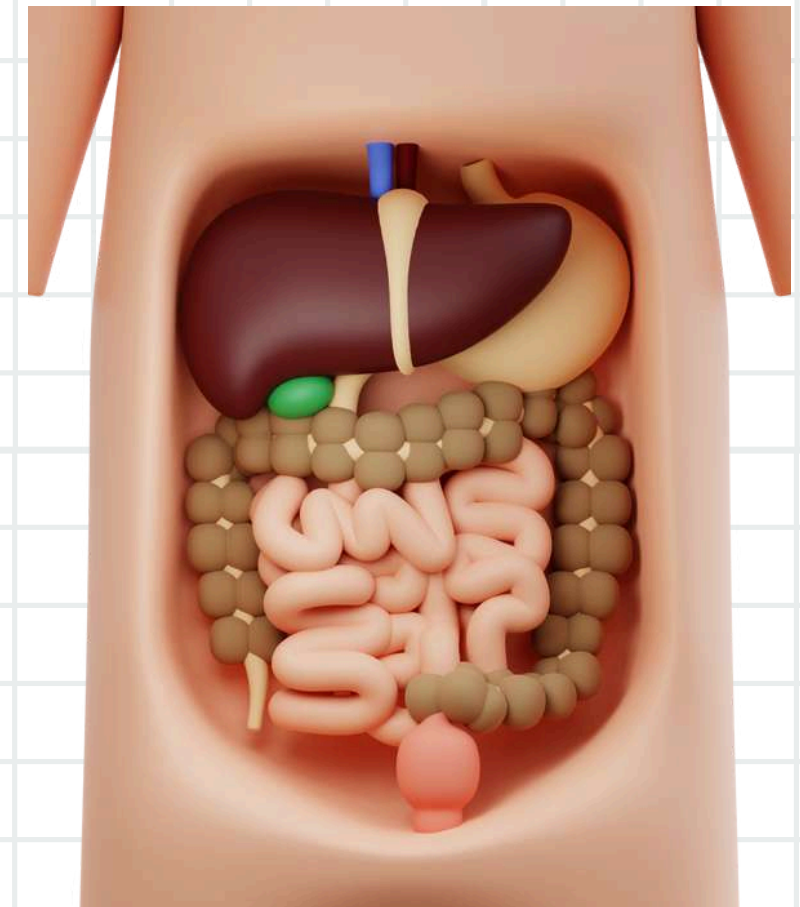
Morfología

ALUMNA:

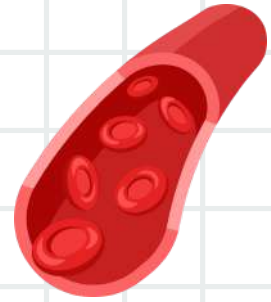
Eunice Yamileth Roblero Rodríguez

CATEDRÁTICO:

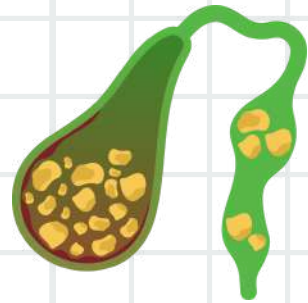
Lizbeth Anahi Ruiz Cordova



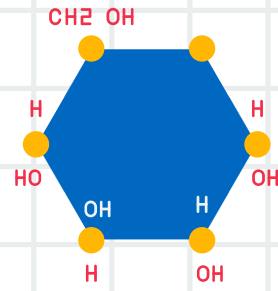
FUNCIONES



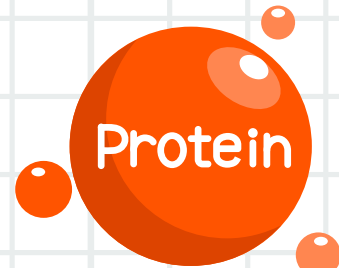
Purificar la sangre



Producción de bilis

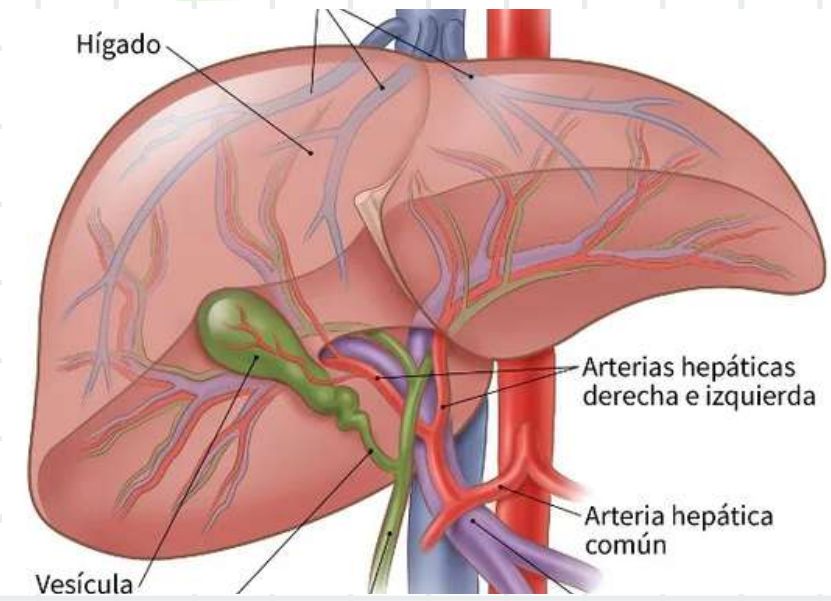


Almacenamiento de glucogeno

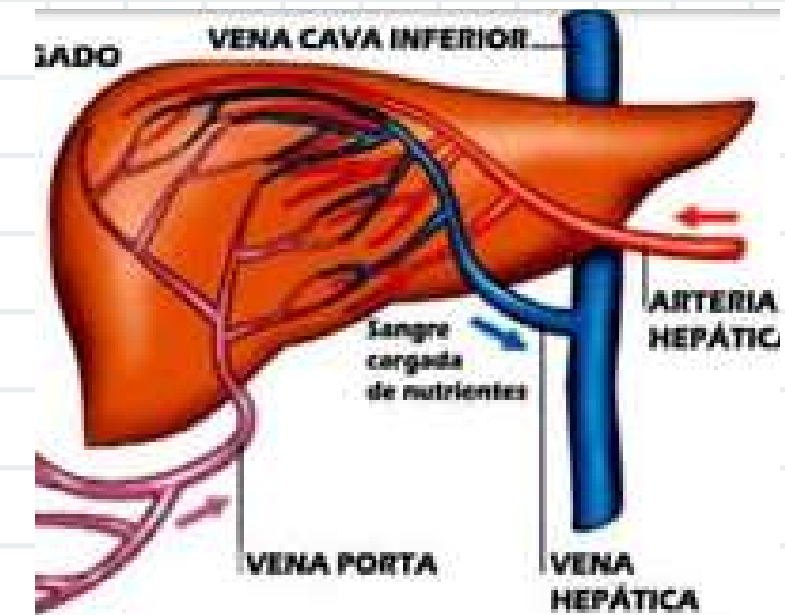


Producción de proteínas

IRRIGACIÓN



DRENAJE VENOSO

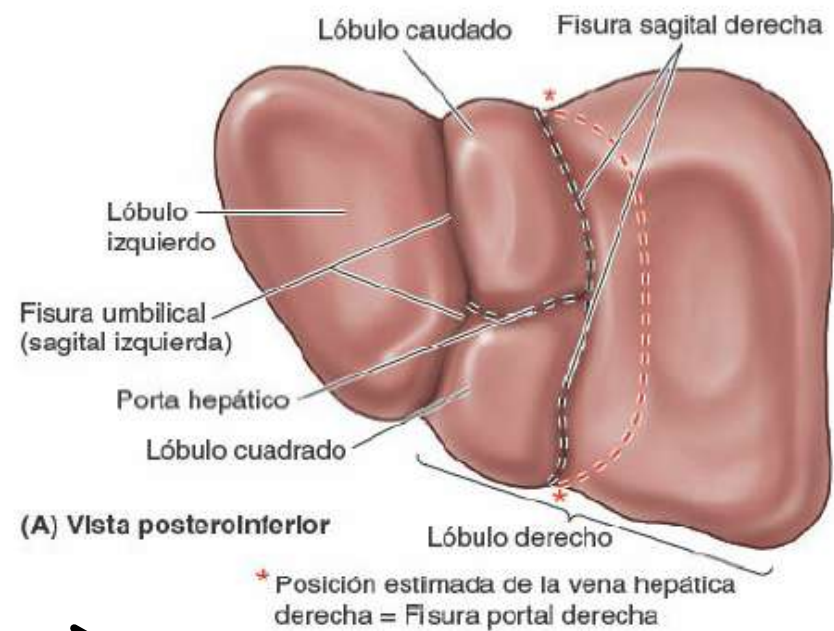
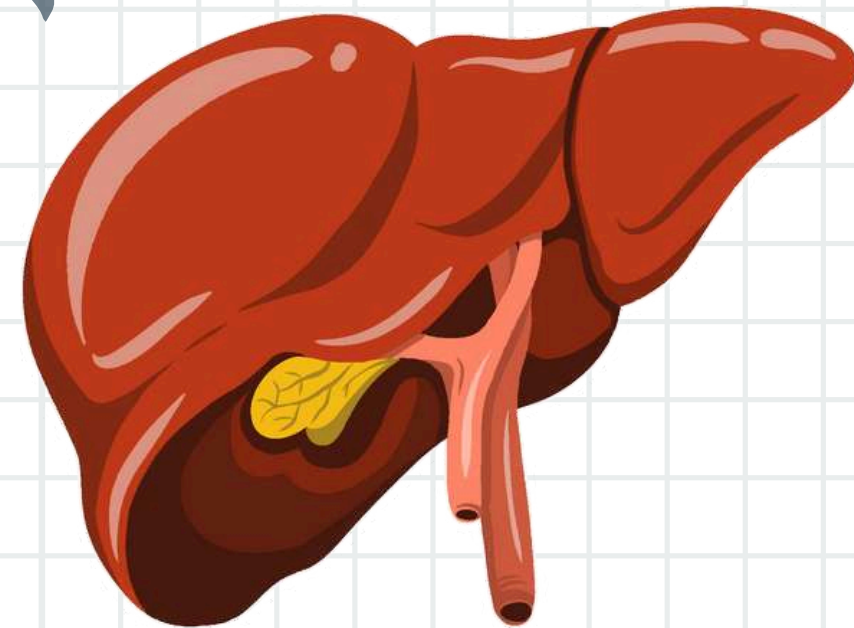


INERVACIÓN

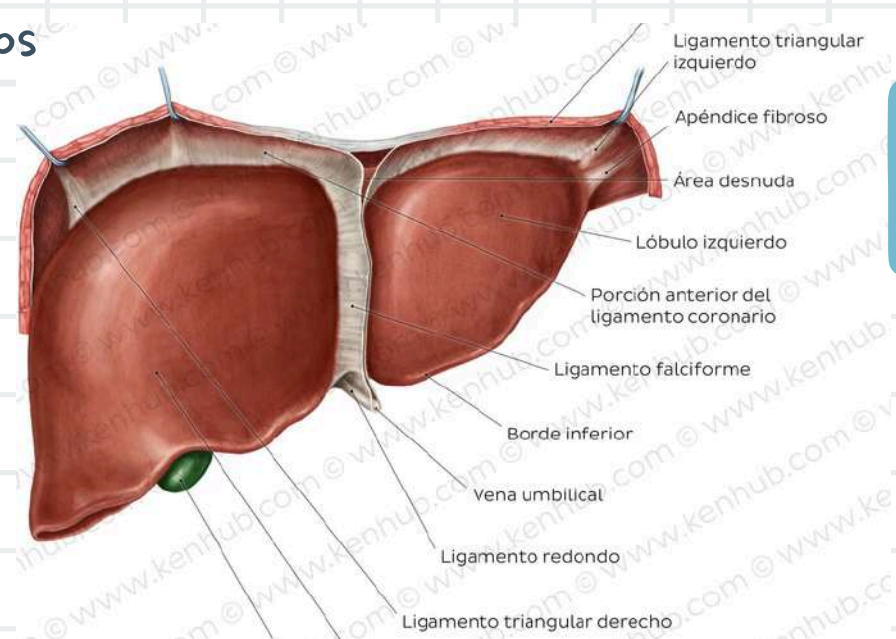
Troncos vagales, plexos celiacos y hepaticos



HIGADO



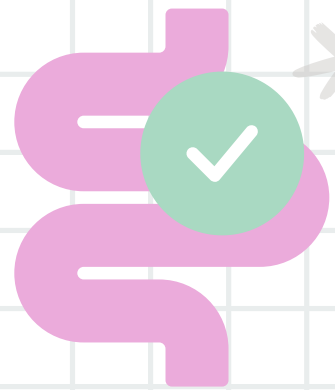
Lobulos



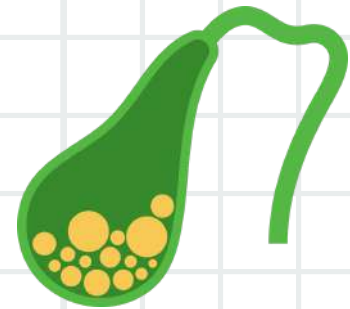
Ligamentos

ANATOMÍA

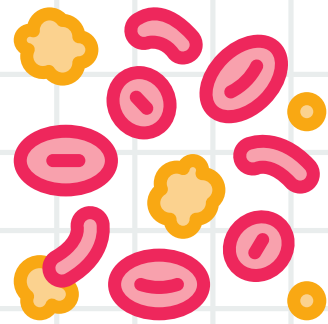
FUNCIONES



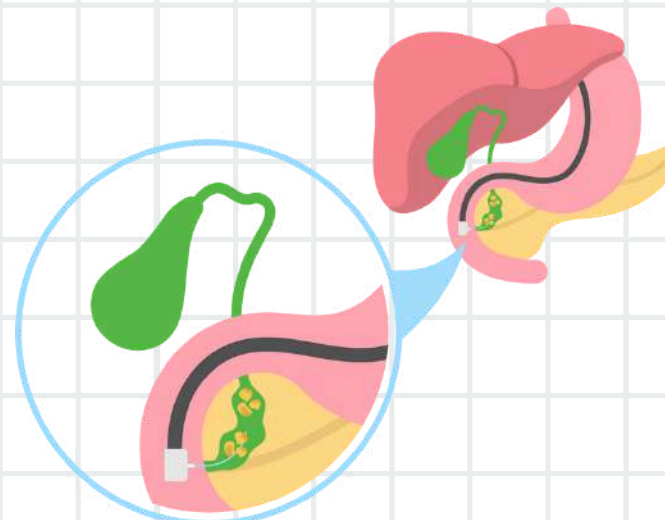
Ayuda en la digestión



Almacenamiento de bilis



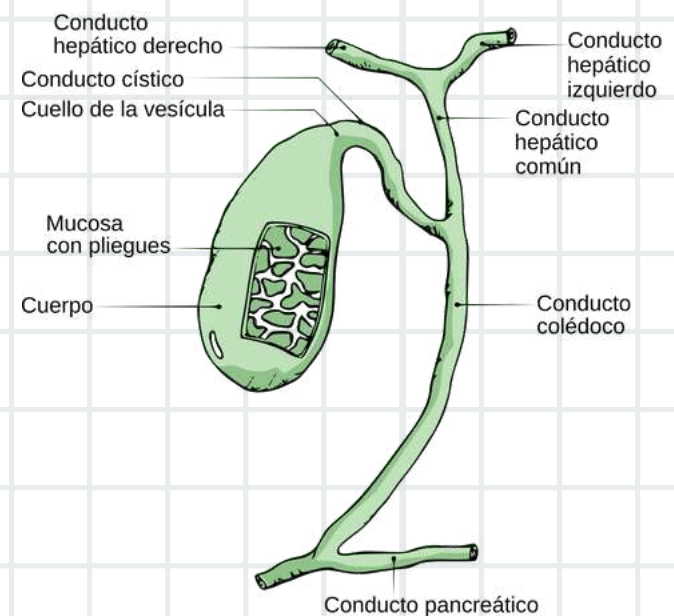
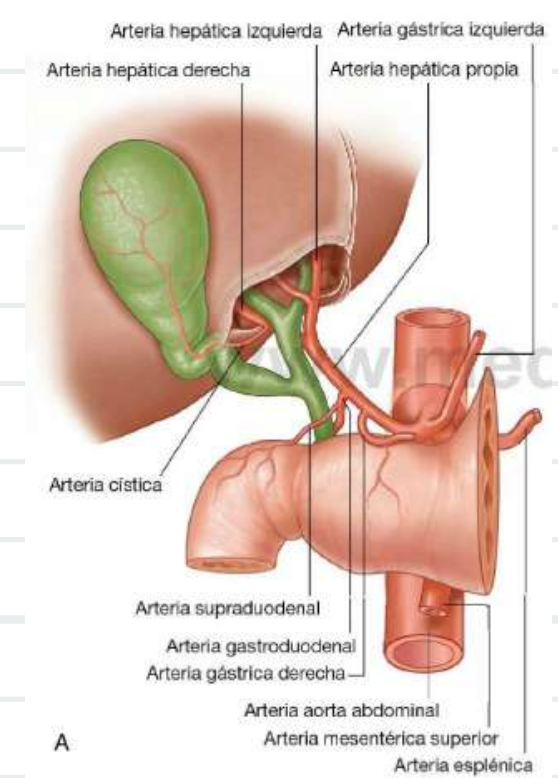
Regula el colesterol



Liberación de bilis

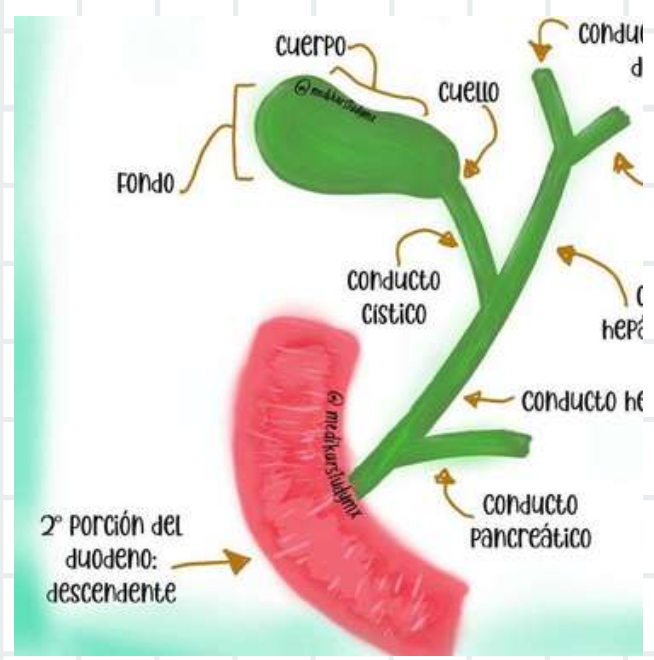
IRRIGACIÓN

Triángulo de Calot



Conductos

ANATOMÍA



Porciones

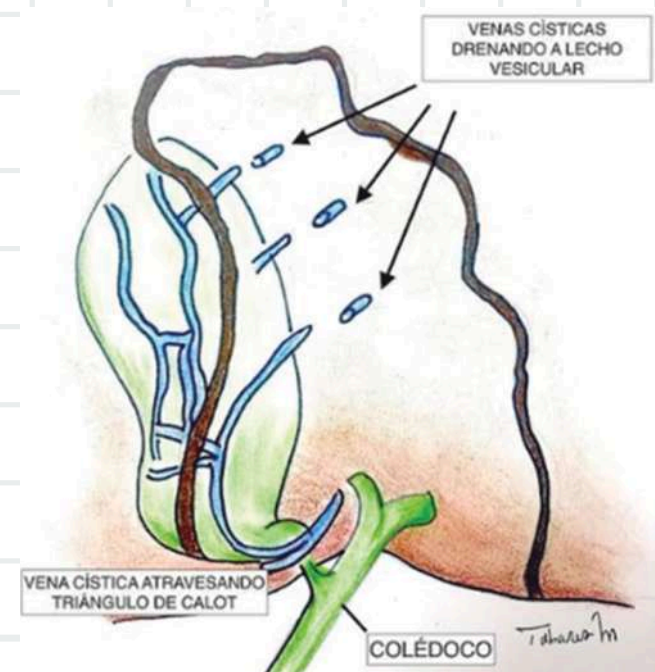
VESICULA BILIAR

INERVACIÓN

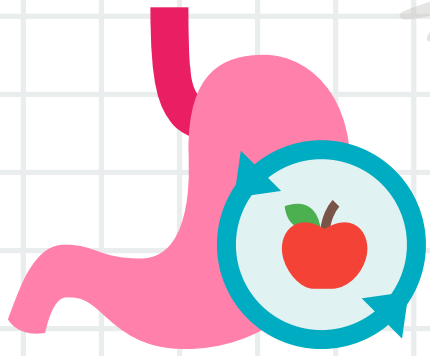
Simpática: Nervio esplacnico mayor

Parasimpática: Vago

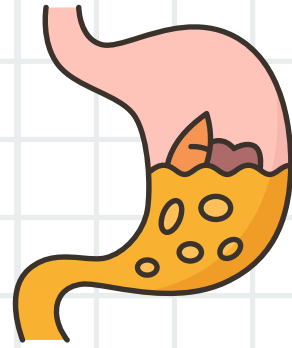
DRENAJE VENOSO



FUNCIONES



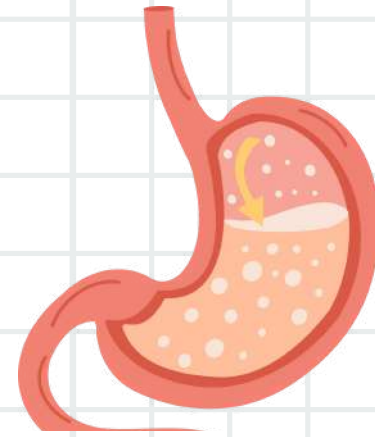
Mezcla



Degradación



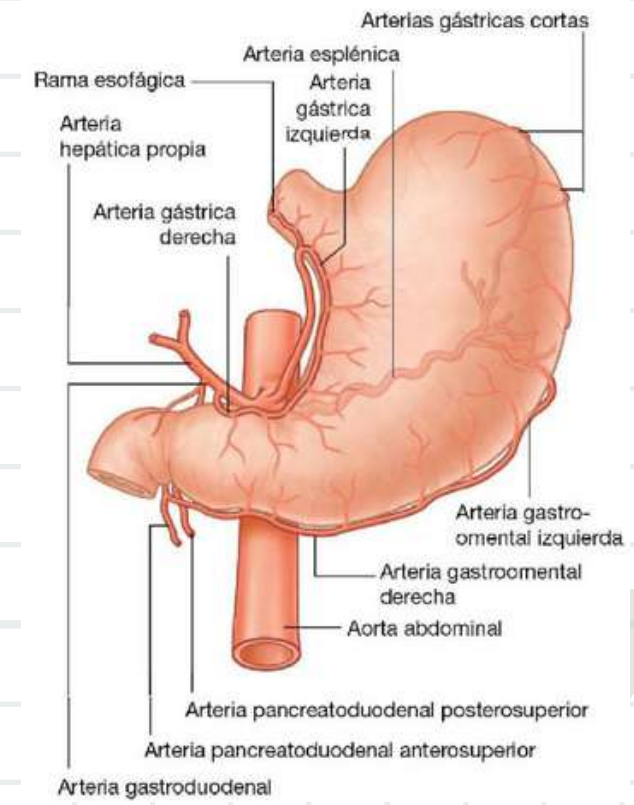
Inactivación de bacterias



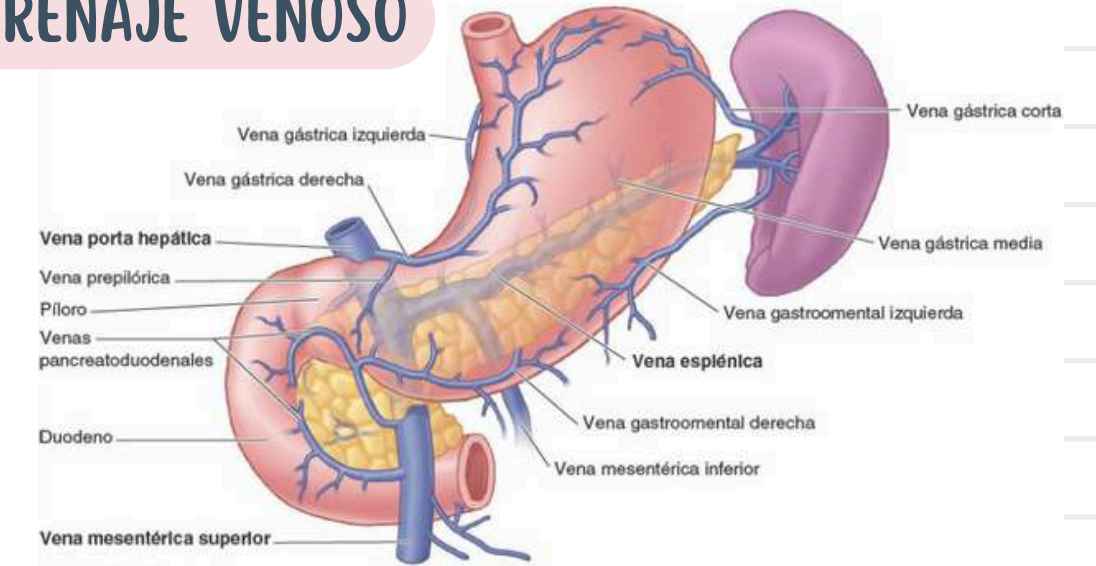
Producción de HCl

IRRIGACIÓN

Tronco celiaco



DRENAJE VENOSO

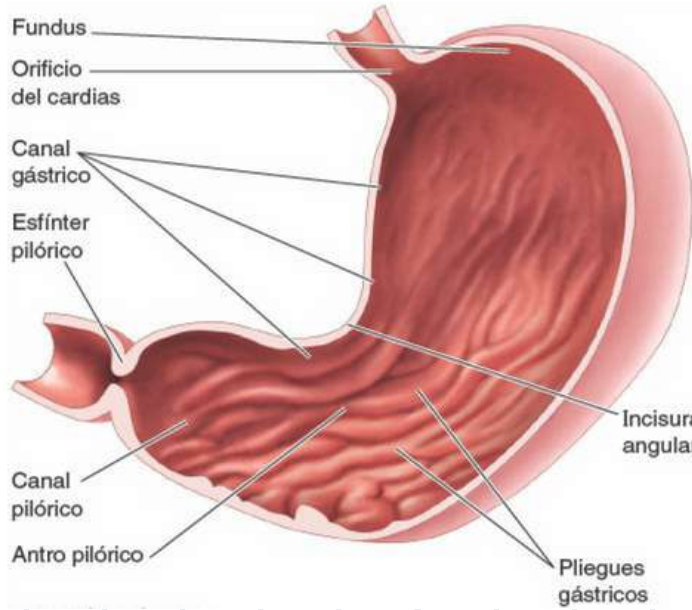


INERVACIÓN

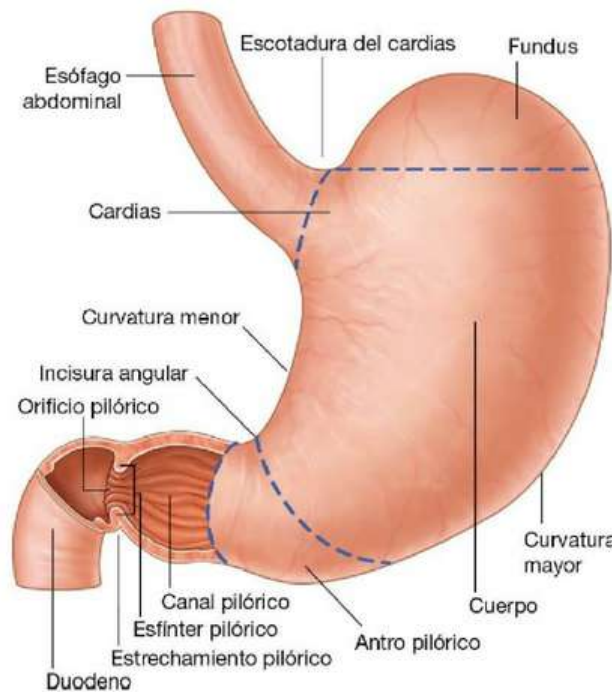
Simpática: Segmentos T6 - T9 de la medula espinal

Parasimpática: Troncos vagales anterior y posterior

ESTOMAGO



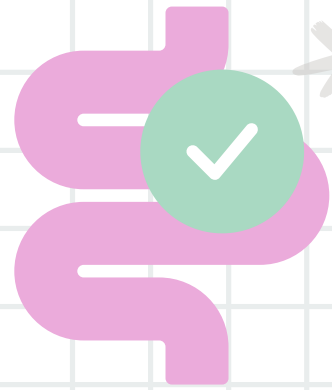
Interior



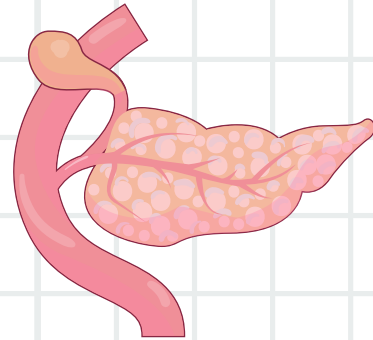
Porciones y curvaturas

ANATOMÍA

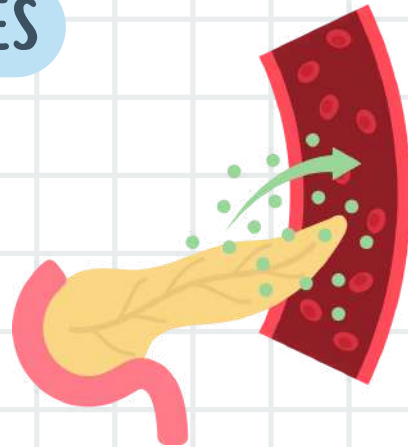
FUNCIONES



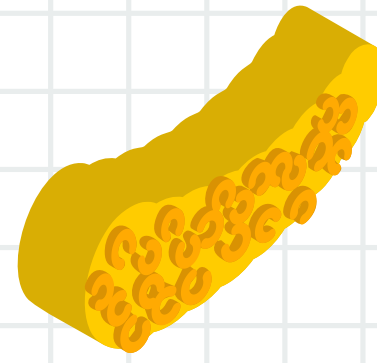
Ayuda en la digestión



Regulación hormonal



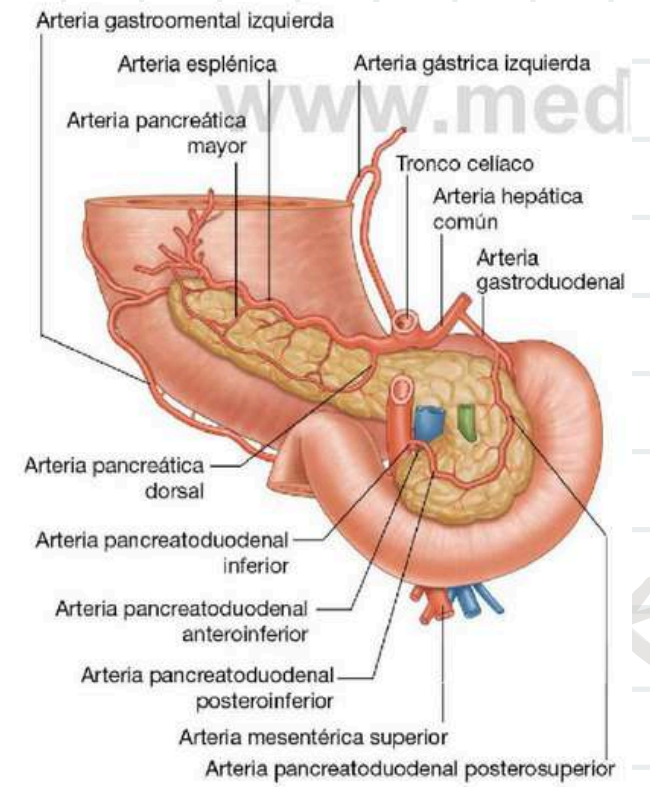
Liberación de insulina



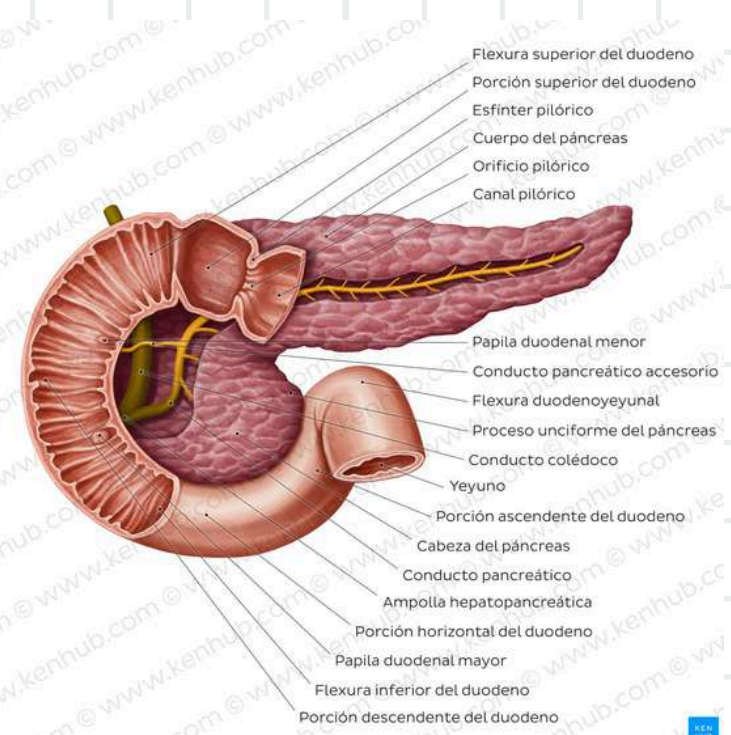
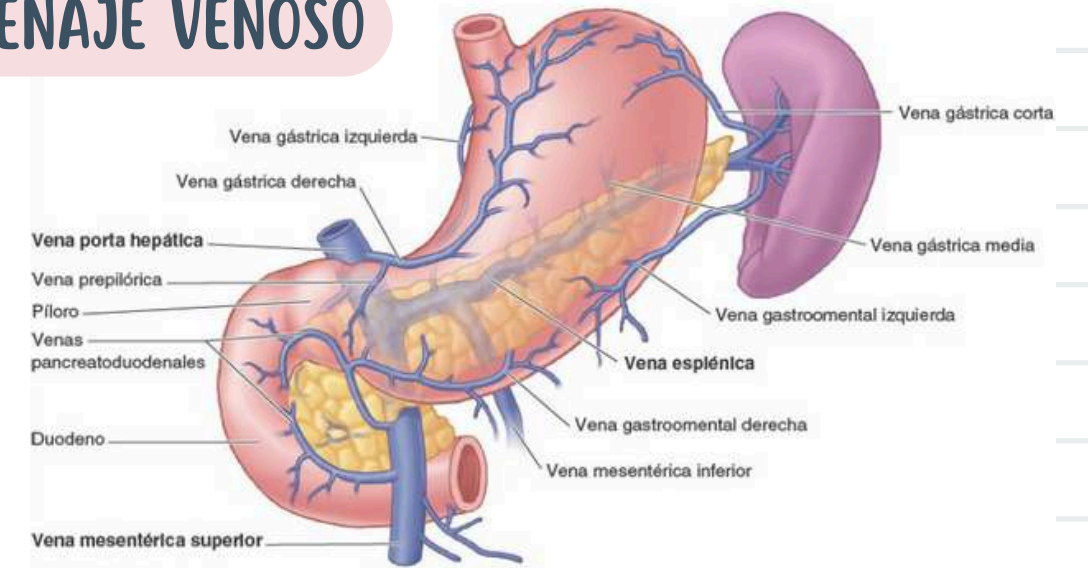
Almacenamiento de glucagón

IRRIGACIÓN

Triángulo de Calot

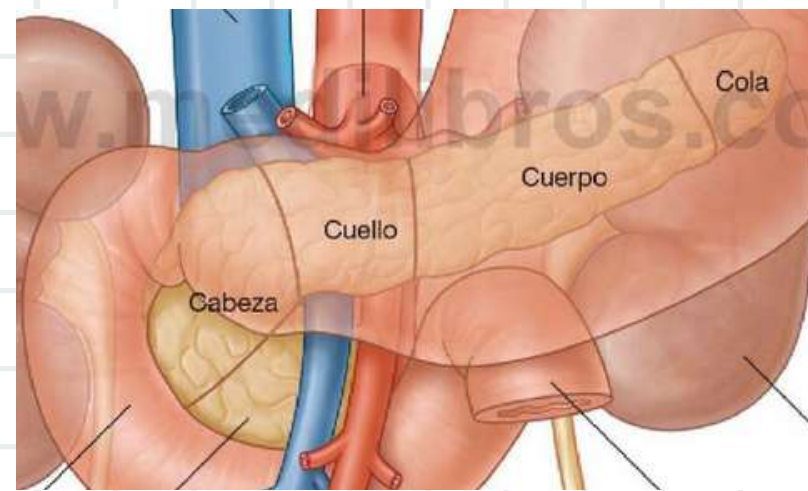


DRENAJE VENOSO



Conducto

ANATOMÍA



Porciones

PANCREAS

INERVACIÓN

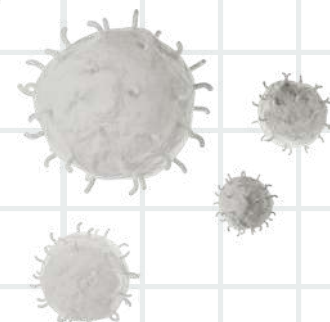
Simpática: Nervio esplácnico mayor y menor T5 - T12

Parasimpática: Vago

FUNCIONES



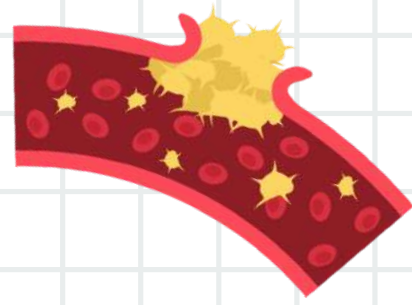
Hematopoyesis



Producción de linfocitos



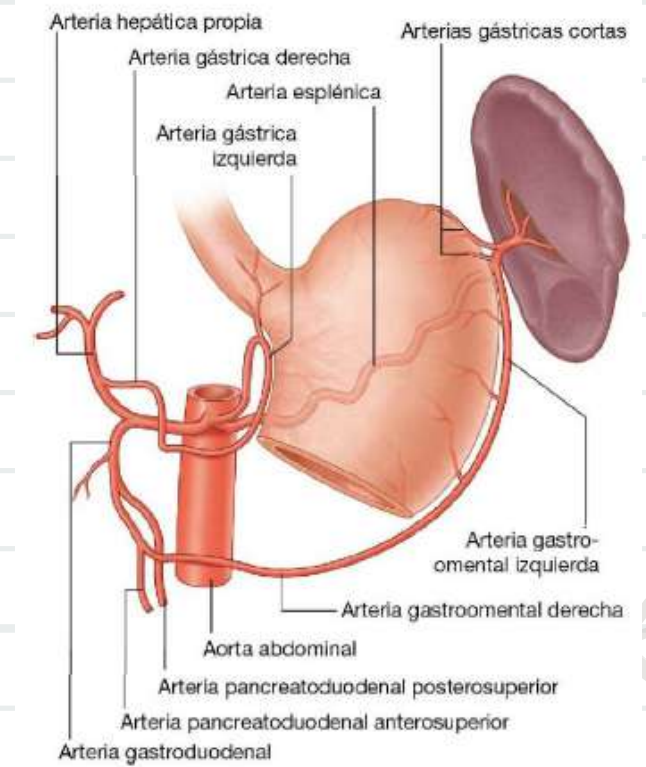
Eliminación de eritorocitos



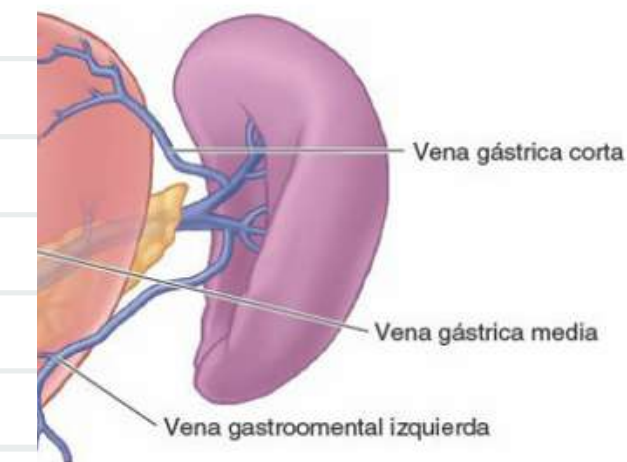
Reserva de sangre

IRRIGACIÓN

Procedente de las a. esplénica

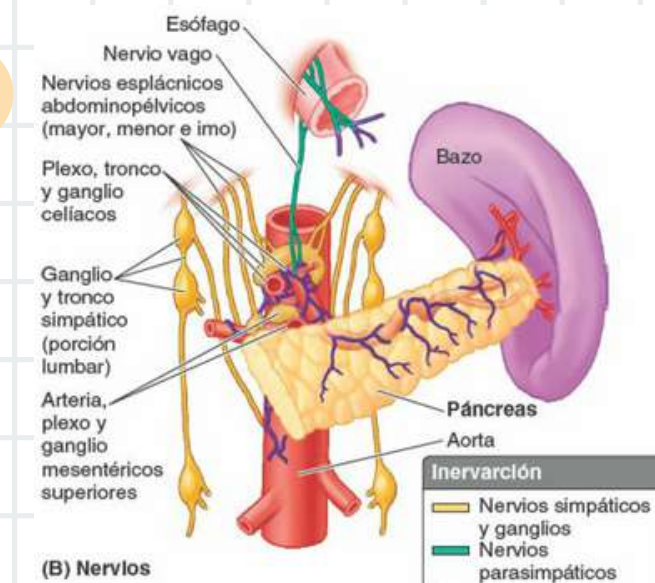


DRENAJE VENOSO

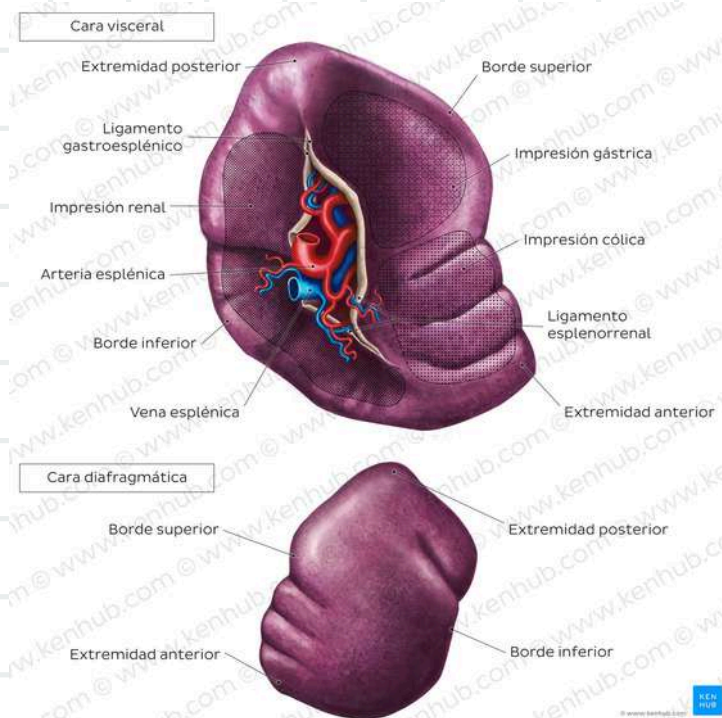


INERVACIÓN

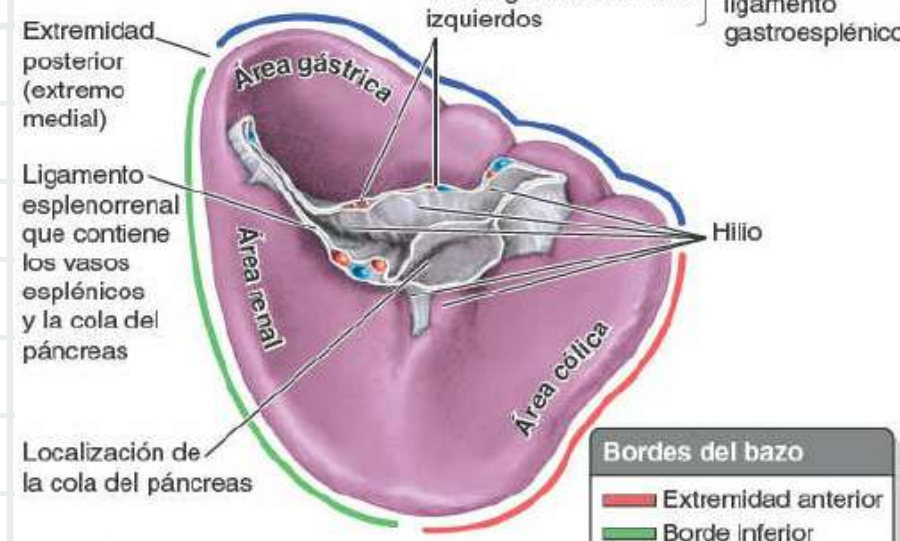
Plexo celiaco



BAZO



Caras

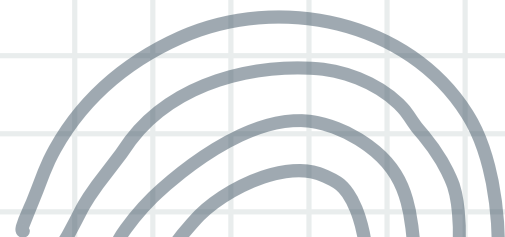


(D) Vista Inferomedial

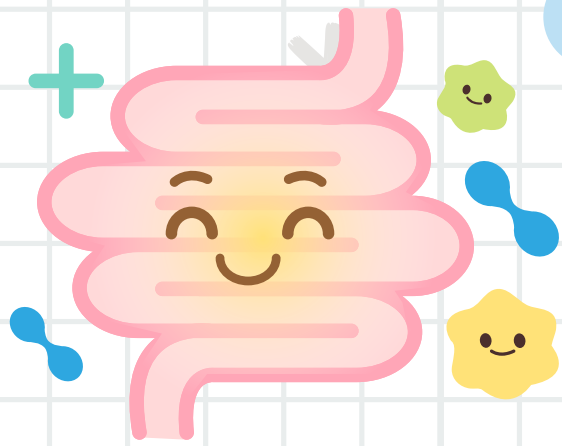
Bordes y ligamentos

Bordes del bazo	
—	Extremidad anterior
—	Borde inferior
—	Borde superior

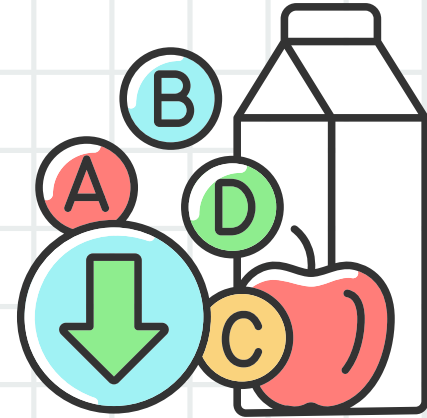
ANATOMIA



FUNCIONES



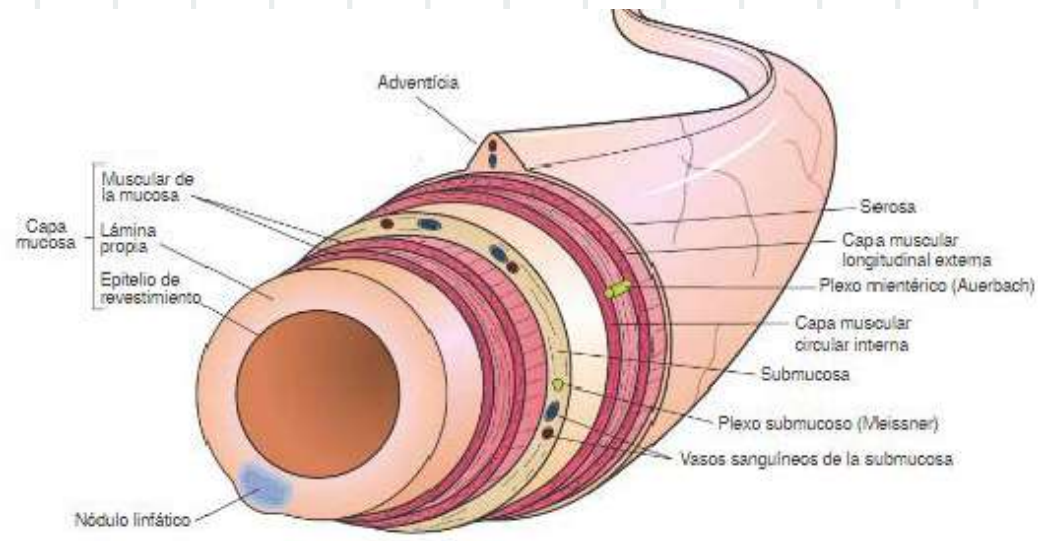
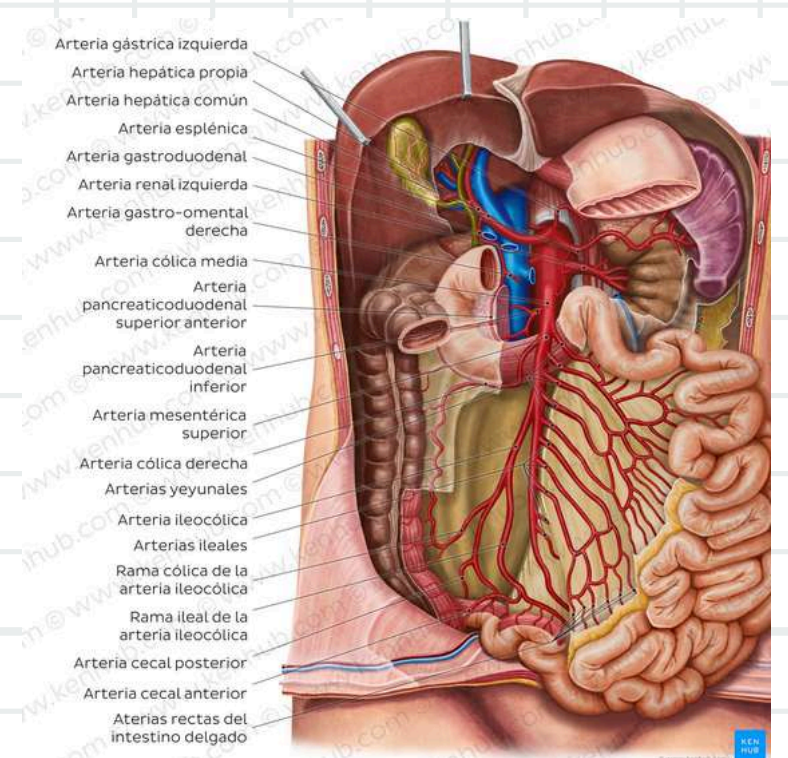
Continuar el proceso de digestión



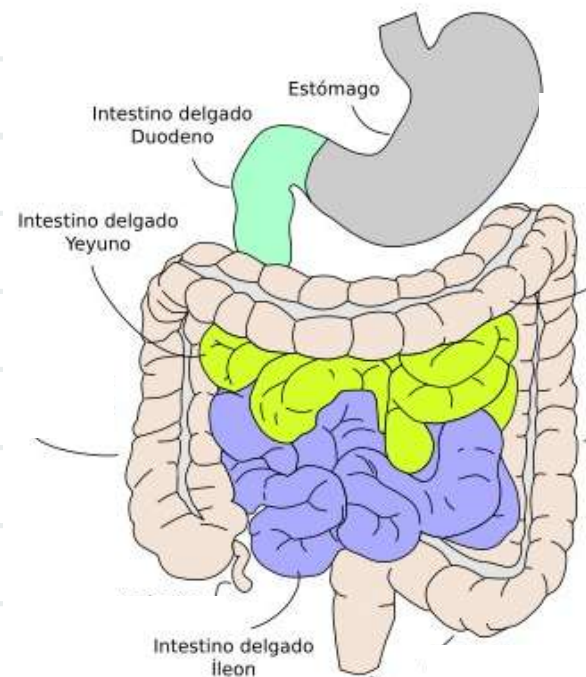
Absorción de nutrientes

IRRIGACIÓN

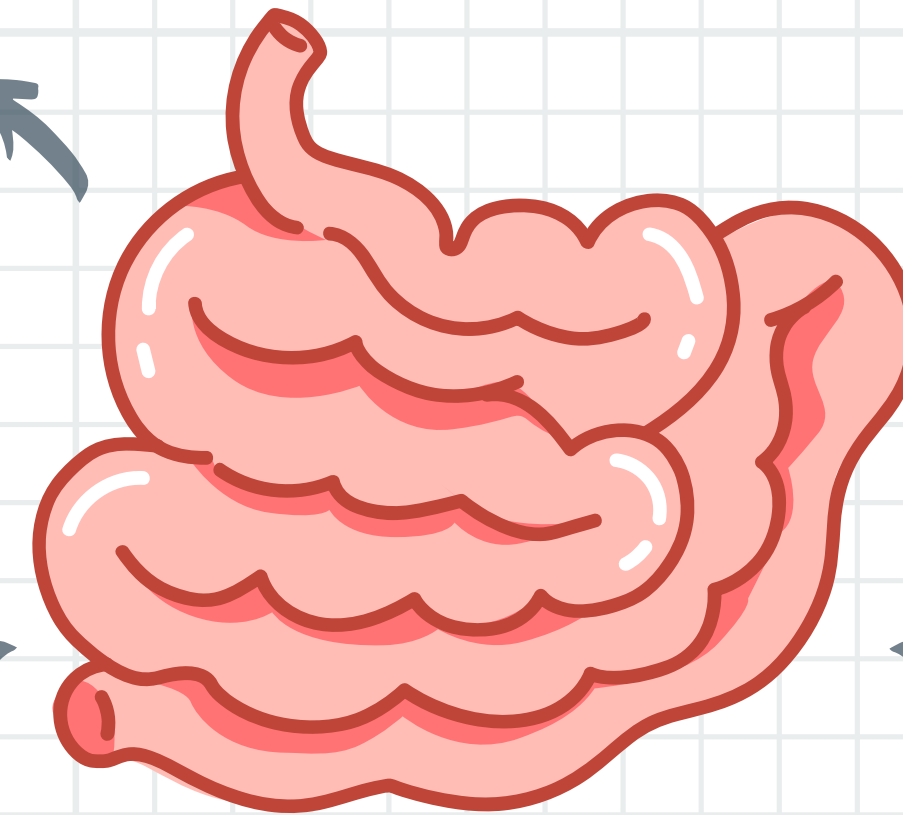
Ramas del tronco celiaco y mesenterica superior



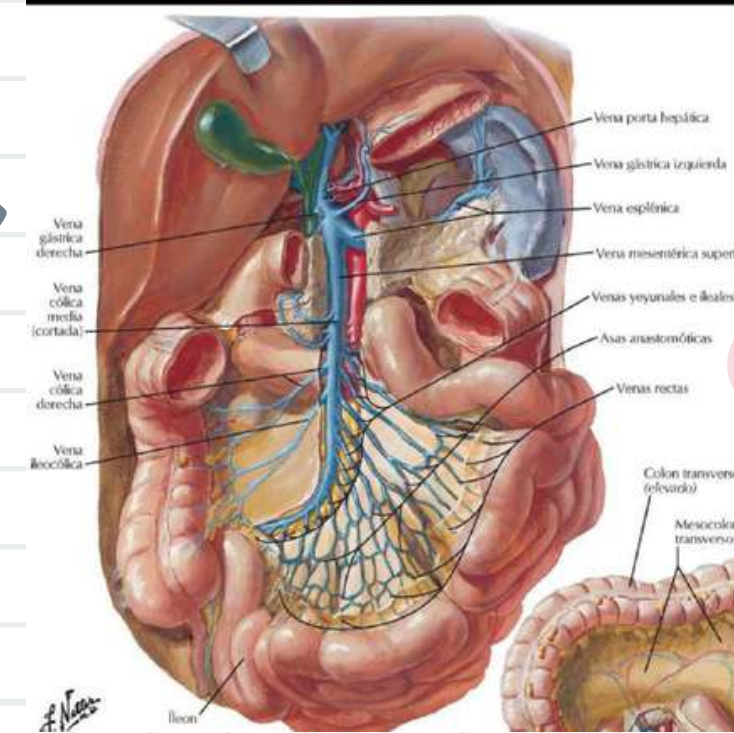
Capas



Porciones



INTESTINO DELGADO



DRENAJE VENOSO

Desembocan en la vena porta hepática

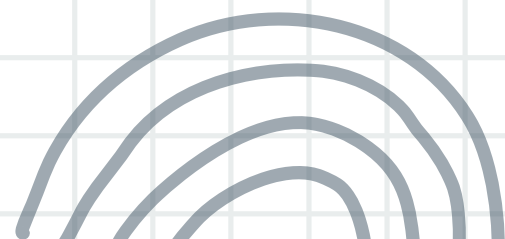
INERVACIÓN

Simpática: Nervio esplacnico mayor

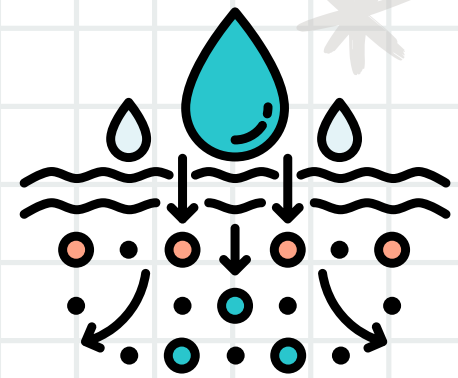
Parasimpática: Vago

Se forman dos plexos: De meissner y de auerbach

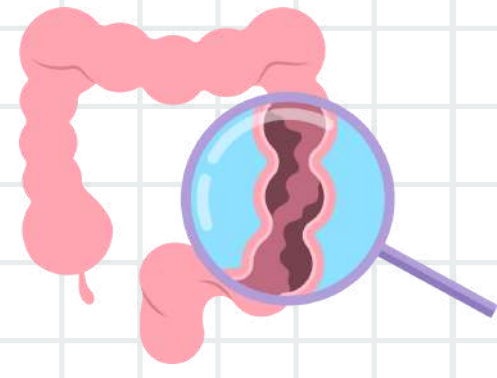
ANATOMÍA



FUNCIONES



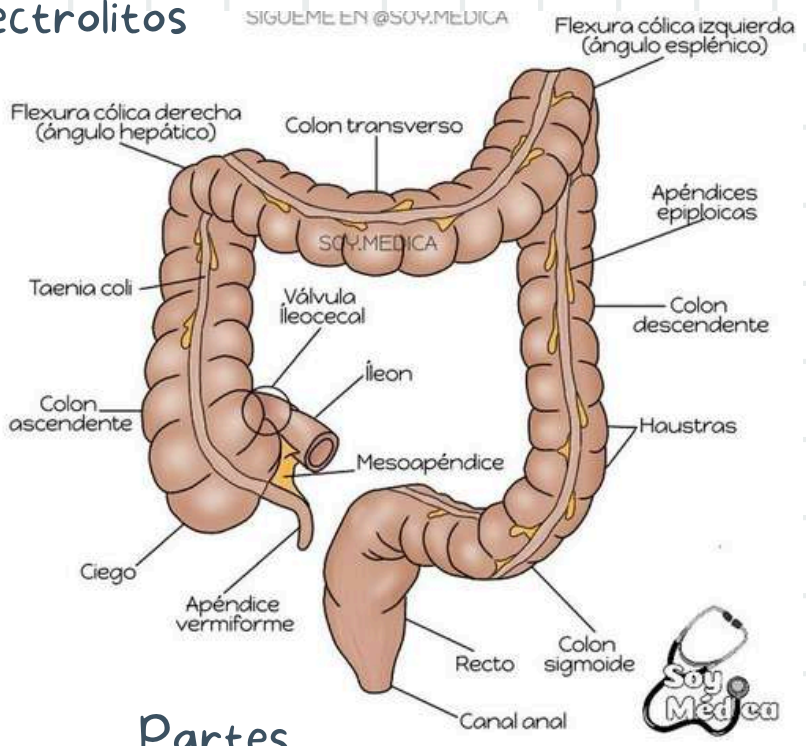
Absorción de agua y electrolitos



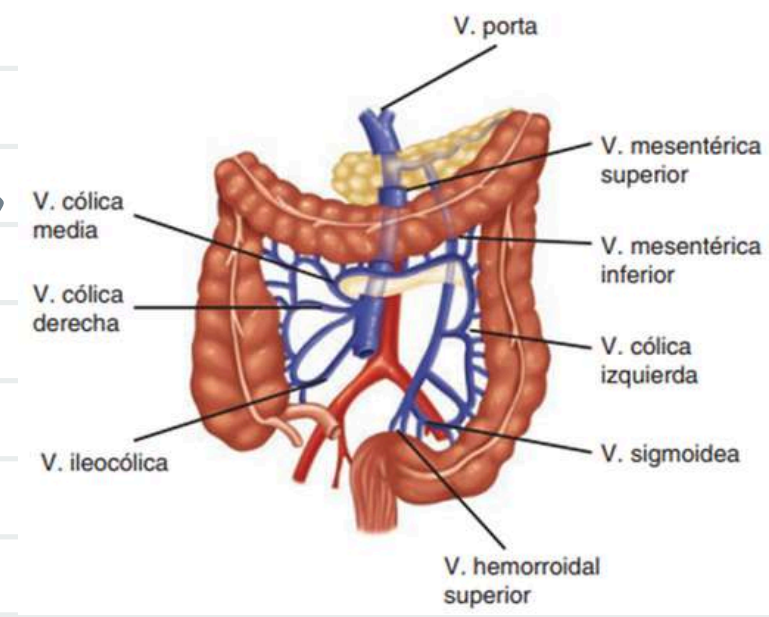
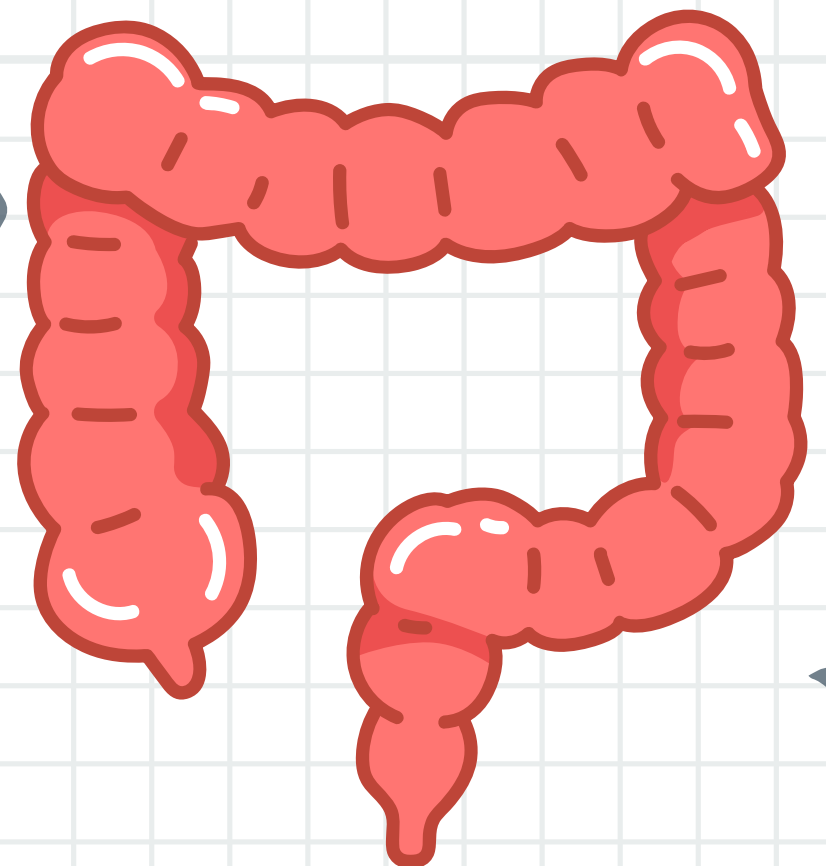
Formación de heces

IRRIGACIÓN

Principalmente de las A. mesentericas superior e inferior

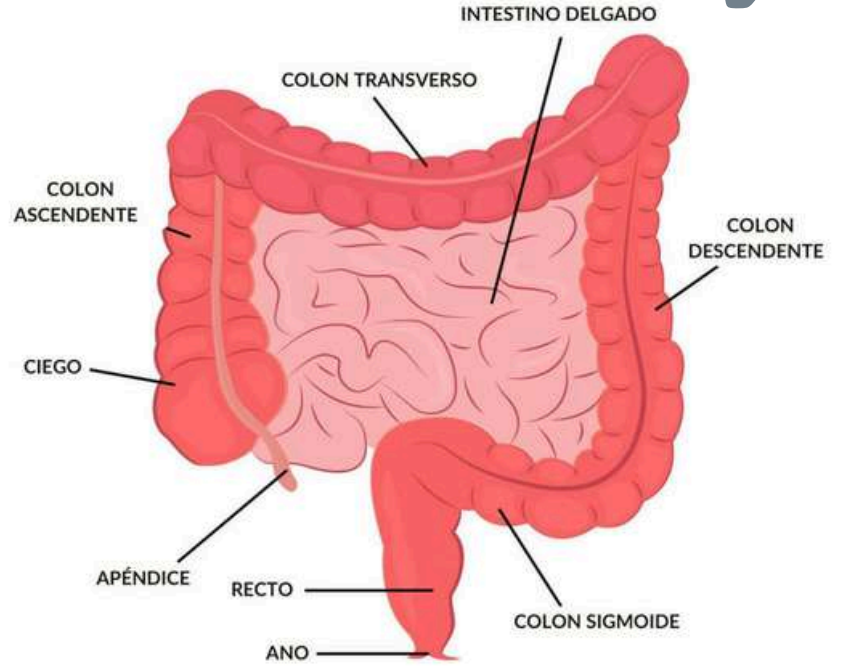


Partes



DRENAJE VENOSO

ANATOMIA



Porciones

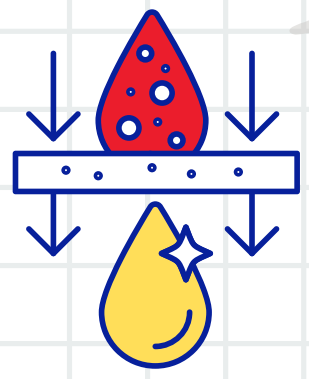
INTESTINO GRUESO

INERVACIÓN

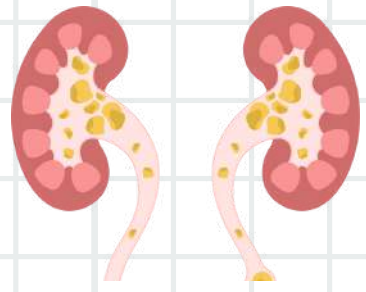
Simpatica: Nervios espinales ---> plexo celiaco y mesentérico superior

Parasimpatica: Vago y plexos mesentérico superior y celiaco

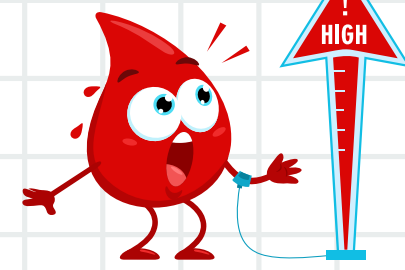
FUNCIONES



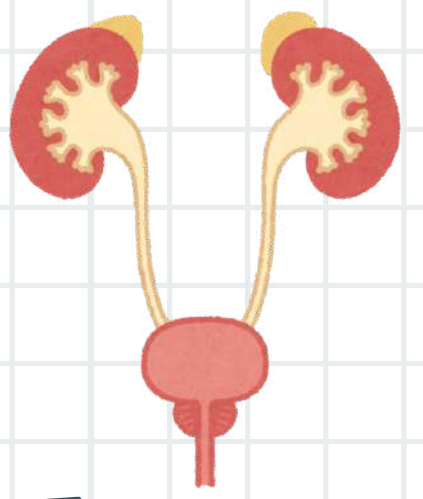
Filtración de sangre



Producción de orina

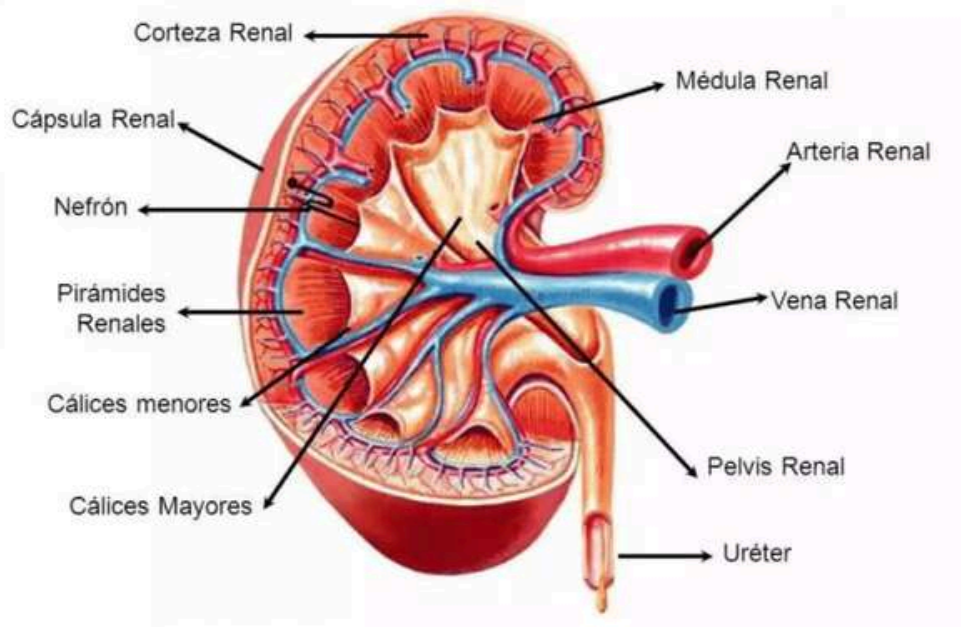
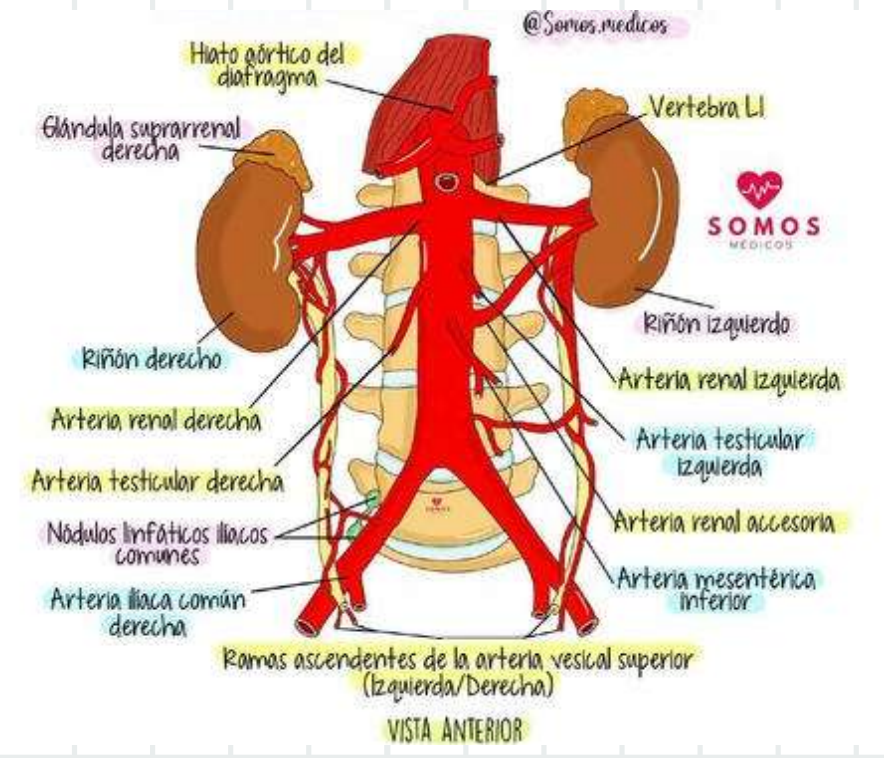


Regula la presión arterial

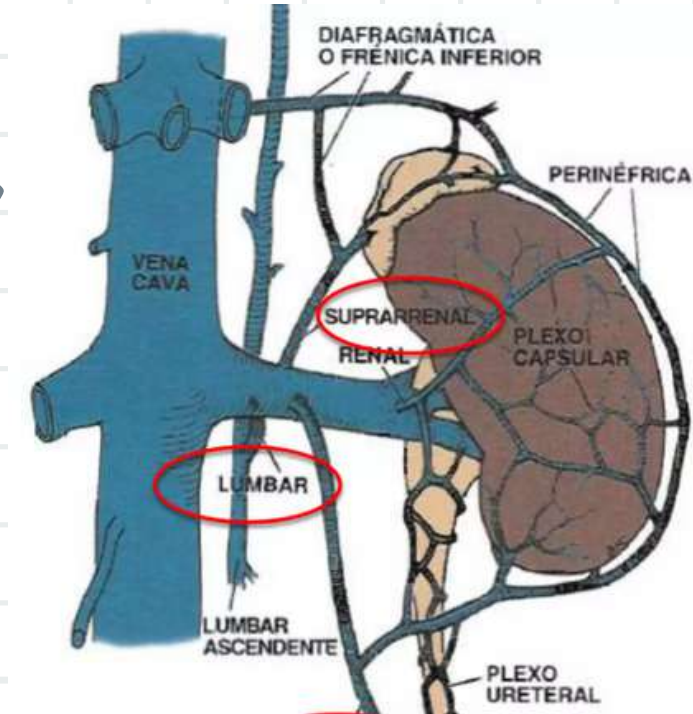
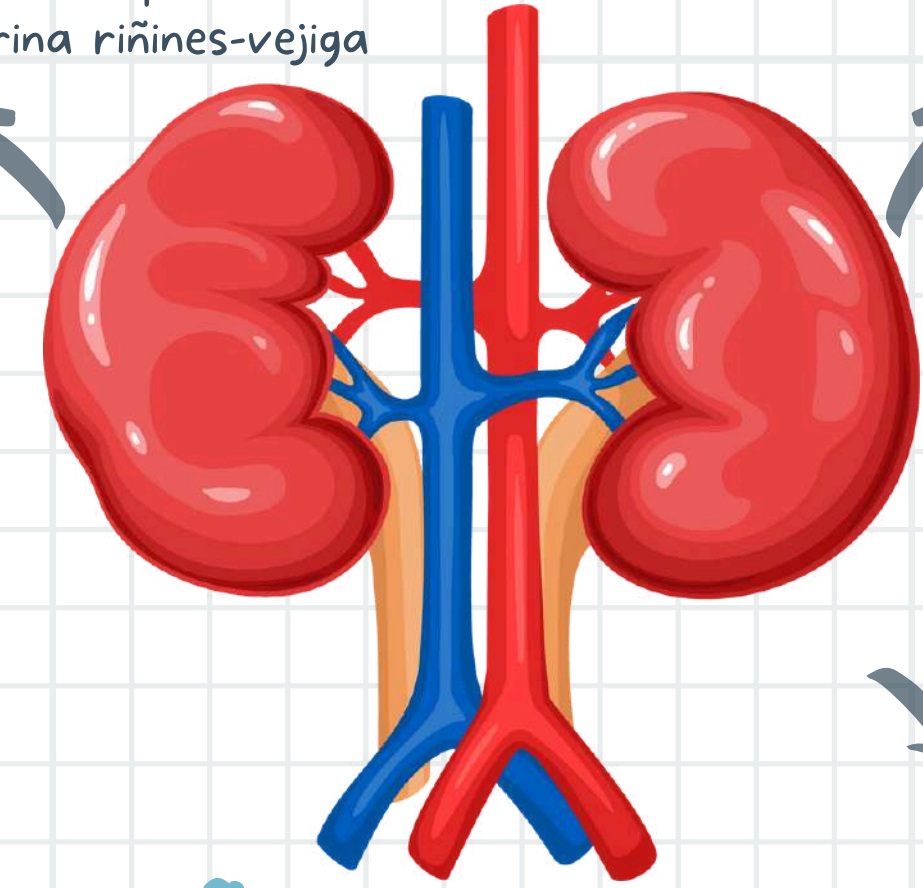


Transporte de orina riñones-vejiga

IRRIGACIÓN

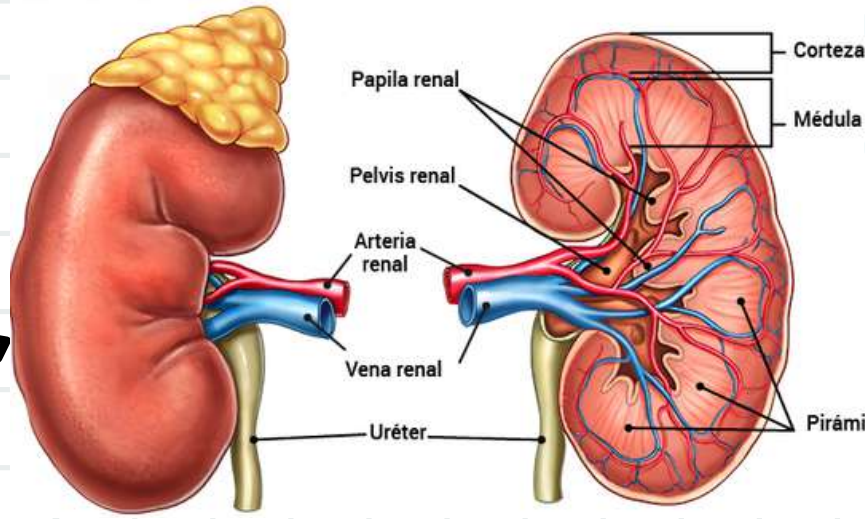


Partes



DRENAJE VENOSO

ANATOMÍA



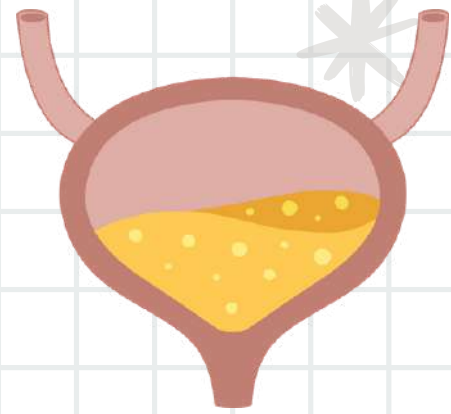
Porciones

INERVACIÓN

Plexo renal

RIÑONES Y URETERES

FUNCIONES

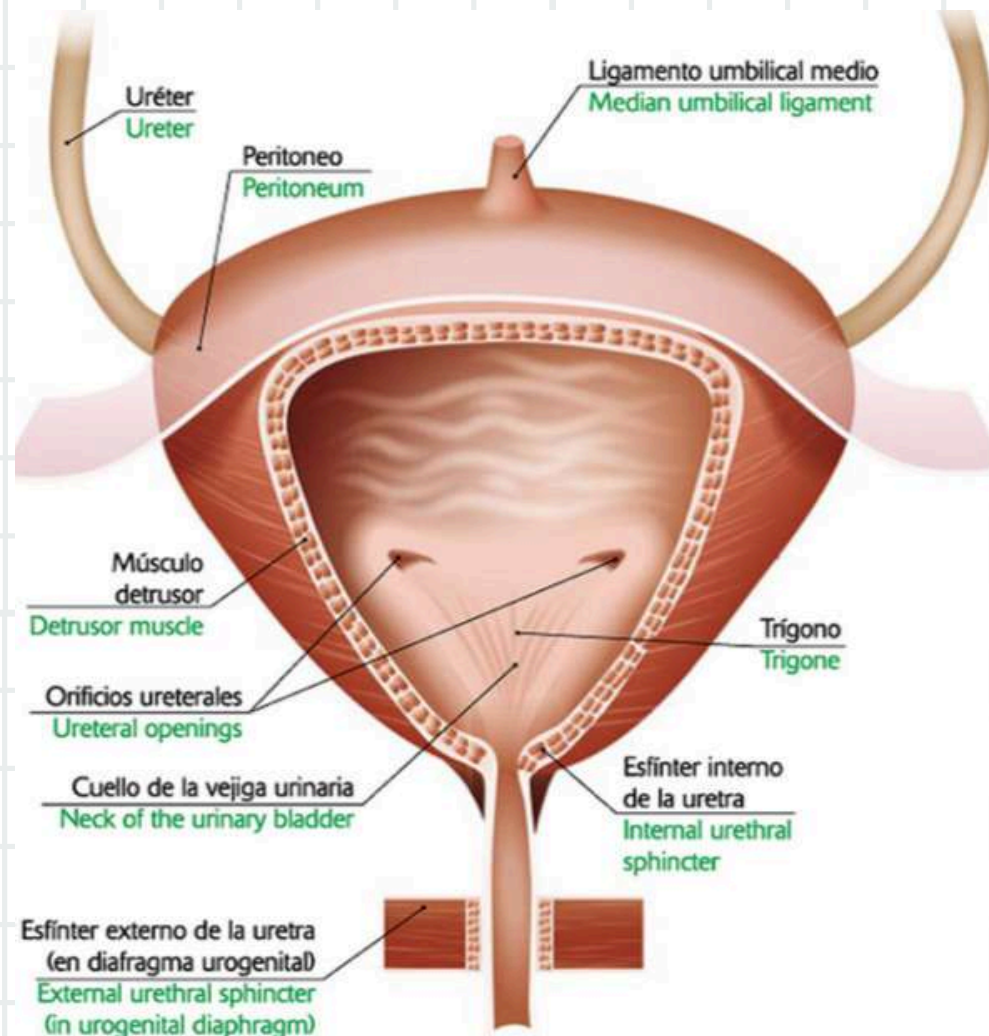


Almacenamiento de la orina

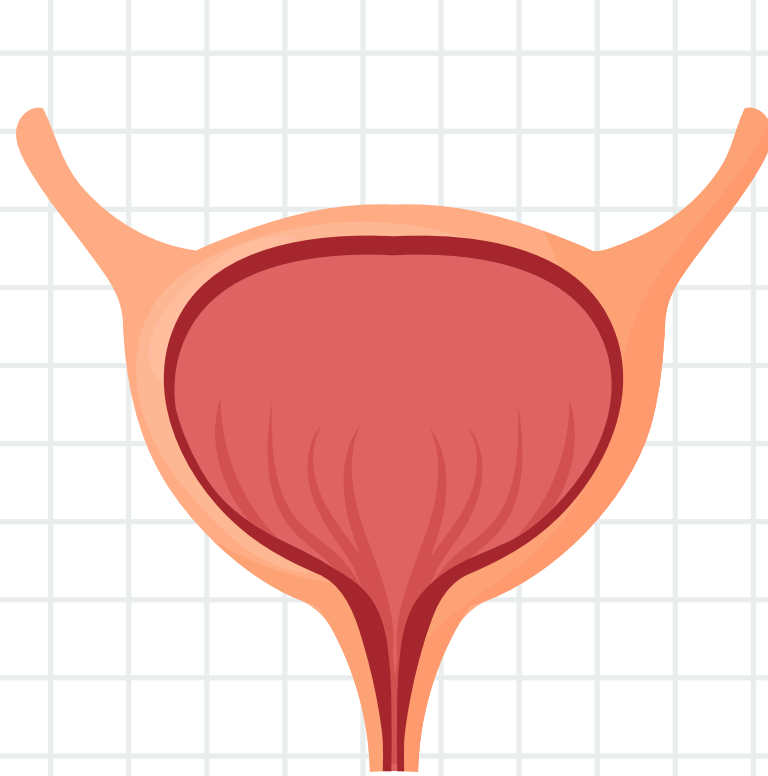


Proveer control sensitivo y motor de la micción

ANATOMÍA

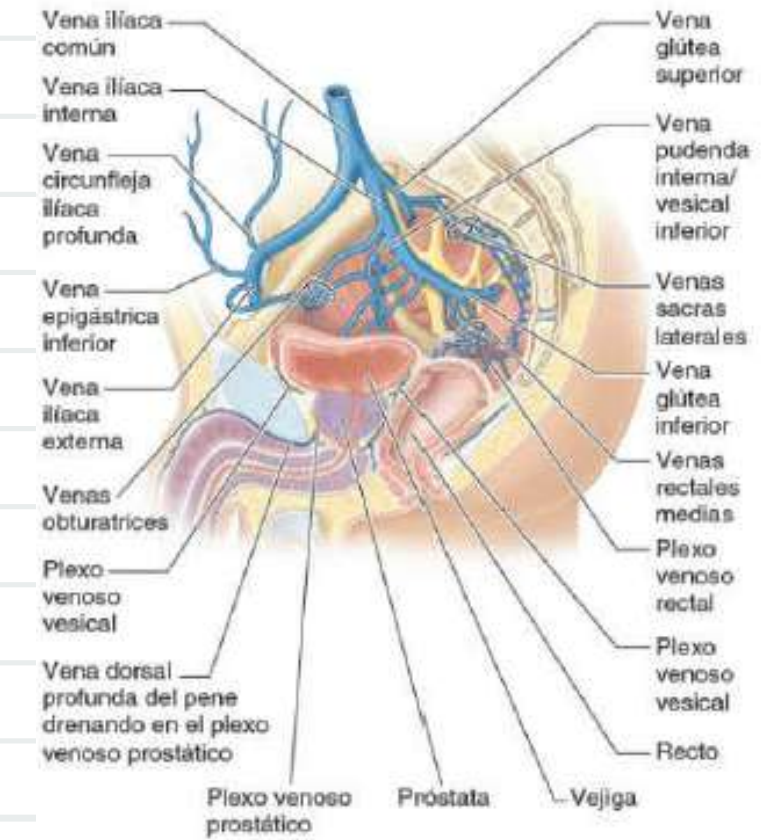
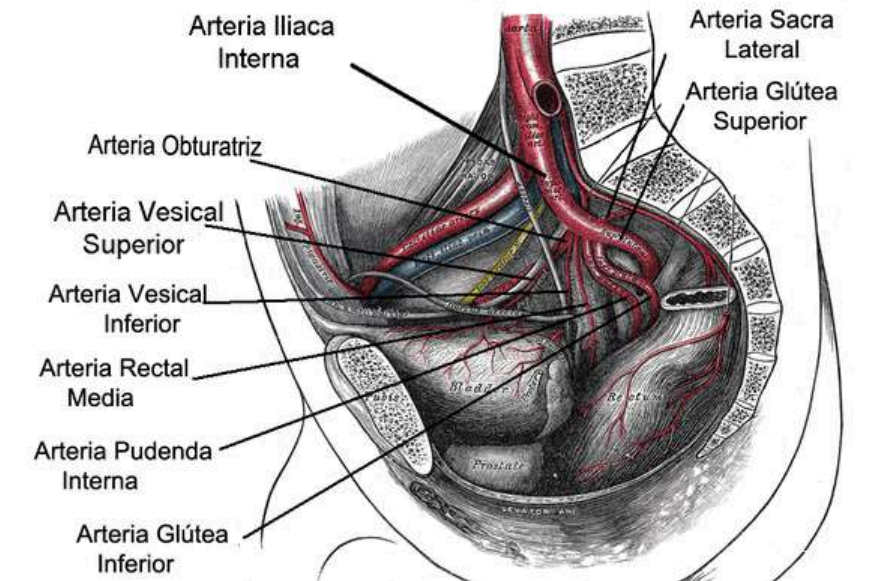


Partes



VEJIGA

IRRIGACIÓN



DRENAJE VENOSO

INERVACIÓN

Voluntaria: fibras simpáticas (plexo hipogastrico) y parasimpaticas (nervios esplacnicos y plexo hipgastrico inferior)

