



**PLANTAS  
ARQUITECTONICAS**

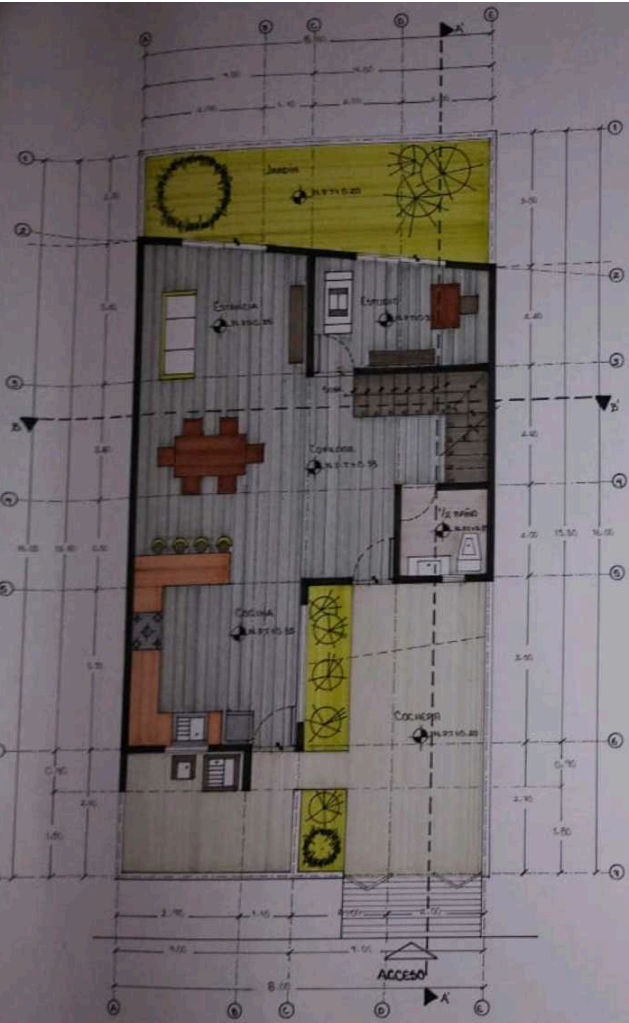
ALUMNA: ANA CRISTELL GÓMEZ RODRIGUEZ

MATERIA: DISEÑO ARQUITECTONICO I

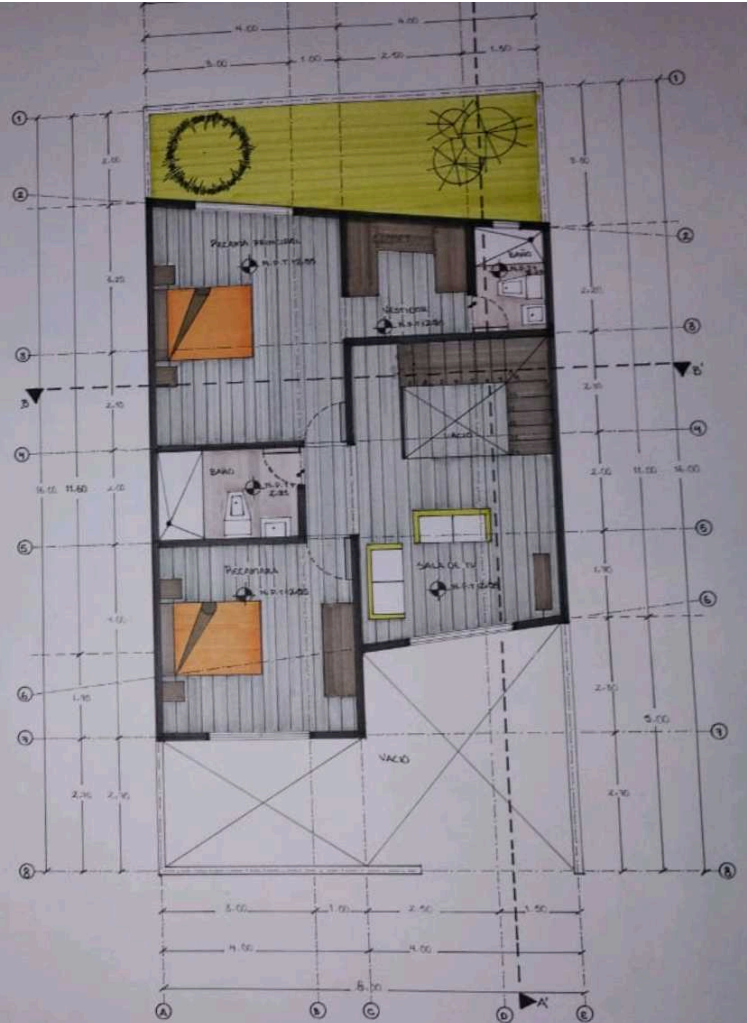
3ER CUATRIMESTRE, 2DA UNIDAD

MAESTRO: VICTOR MANUEL SANTIAGO GUILLEN

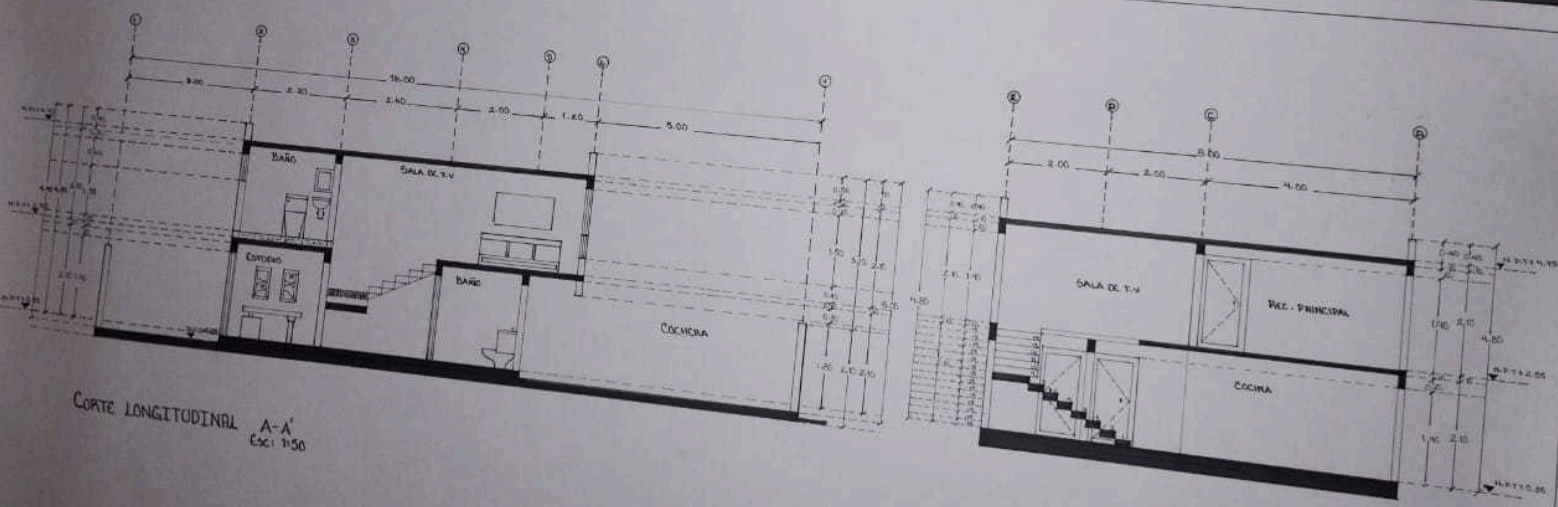
PLANTAS ARQUITECTONICAS



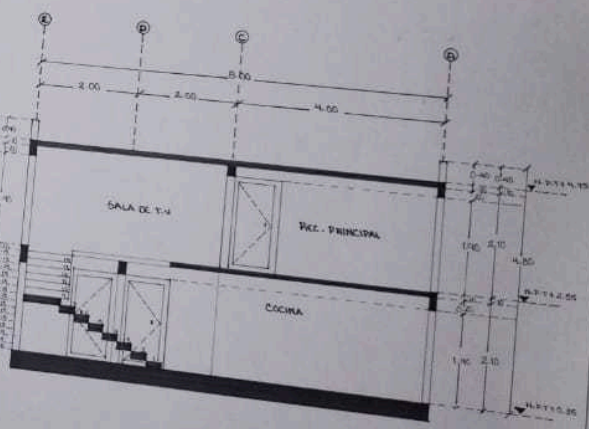
PLANTA BAJA  
Esc: 1:50



PLANTA ALTA  
Esc: 1:50



CORTE LONGITUDINAL A-A'  
Esc: 1:50



CORTE TRANSVERSAL B-B'  
Esc: 1:50

