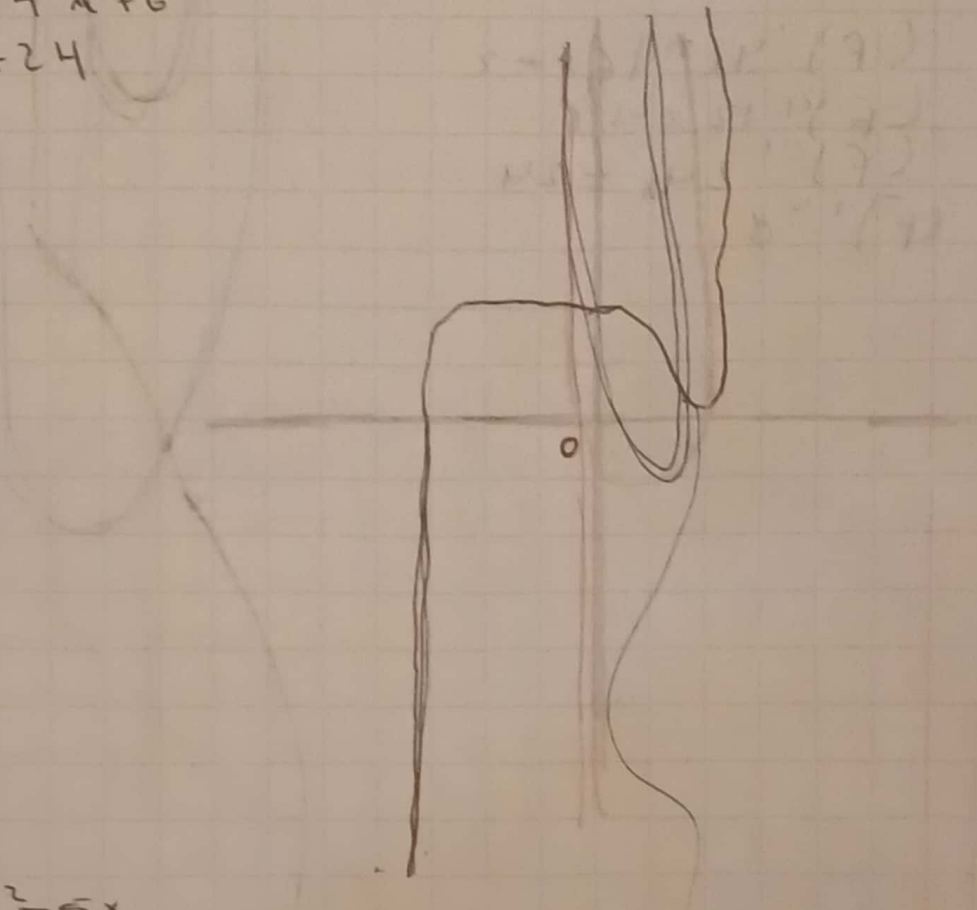


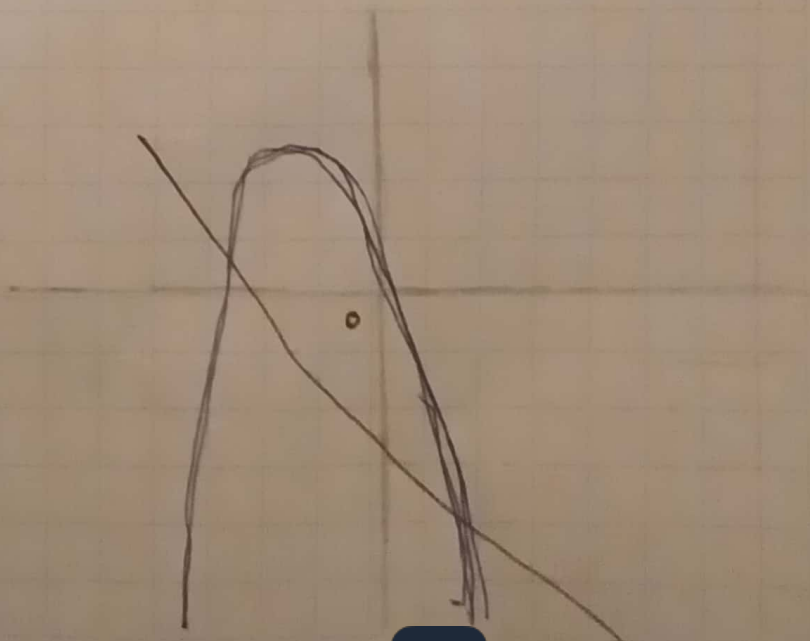
Alberto BT

5/8/2019

$$f(x) = 5x^5 + 4x^4 + 6x^2$$
$$f'(x) = 25x^4 + 16x^3 + 12x$$
$$f''(x) = 100x^3 + 48x^2 + 12$$
$$f'''(x) = 300x^2 + 96x + 12$$
$$f^{(4)}(x) = 600x + 96$$
$$f^{(5)}(x) = 600$$



$$f(x) = -3x^2 - 5x$$
$$f'(x) = -6x - 5$$
$$f''(x) = -6$$
$$f'''(x) = 0$$



Alberto B T

Tarea

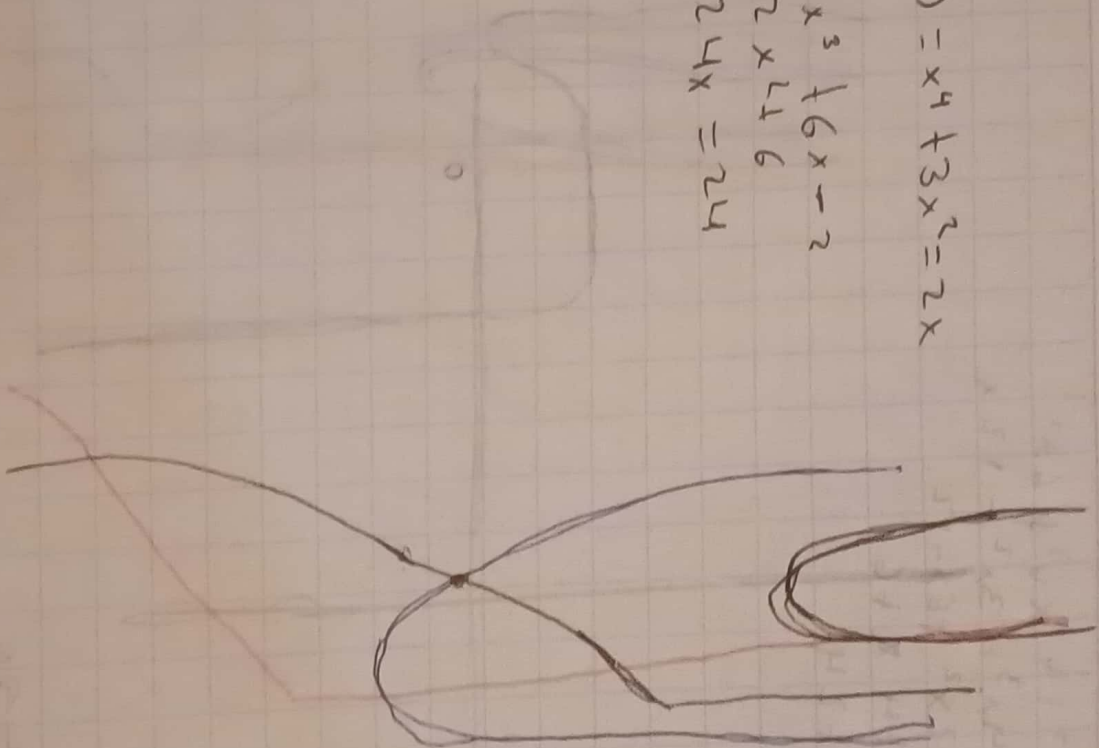
$$f = (x) = x^4 + 3x^2 = 2x$$

$$f'(x) = 4x^3 + 6x - 2$$

$$f''(x) = 12x^2 + 6$$

$$f'''(x) = 24x = 24$$

$$f^{(4)}(x) = 24$$





**Mi Universidad**

**NOMBRE:ALBERTO BERMUDEZ  
TRUJILLO**

**PROFE:SEBAS**

**ACTIVIDAD DE PLATAFORMA**

**EJERCICIOS**

**ADMINISTRACION**



**CamScanner**

Escaneado con CamScanner