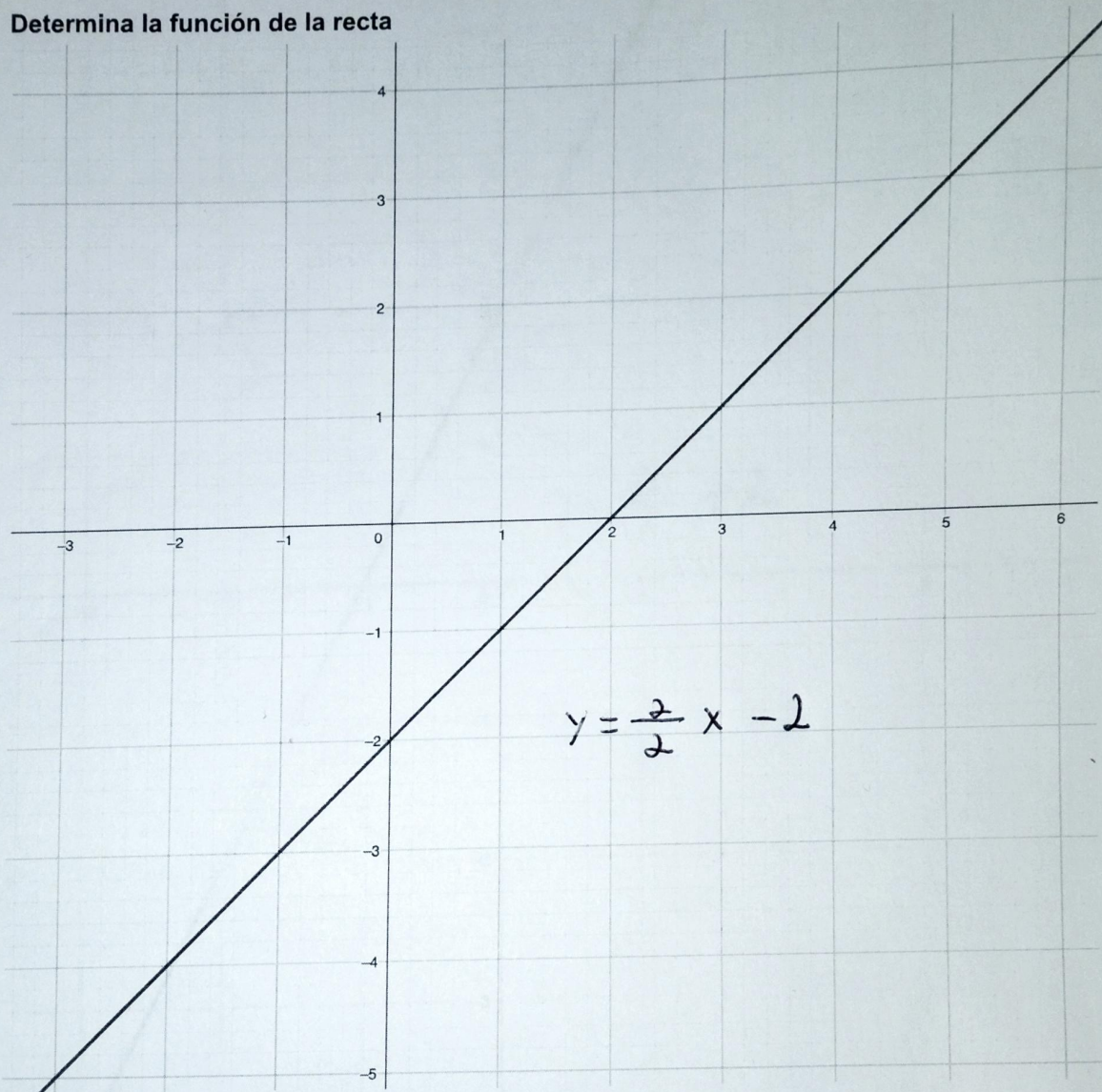
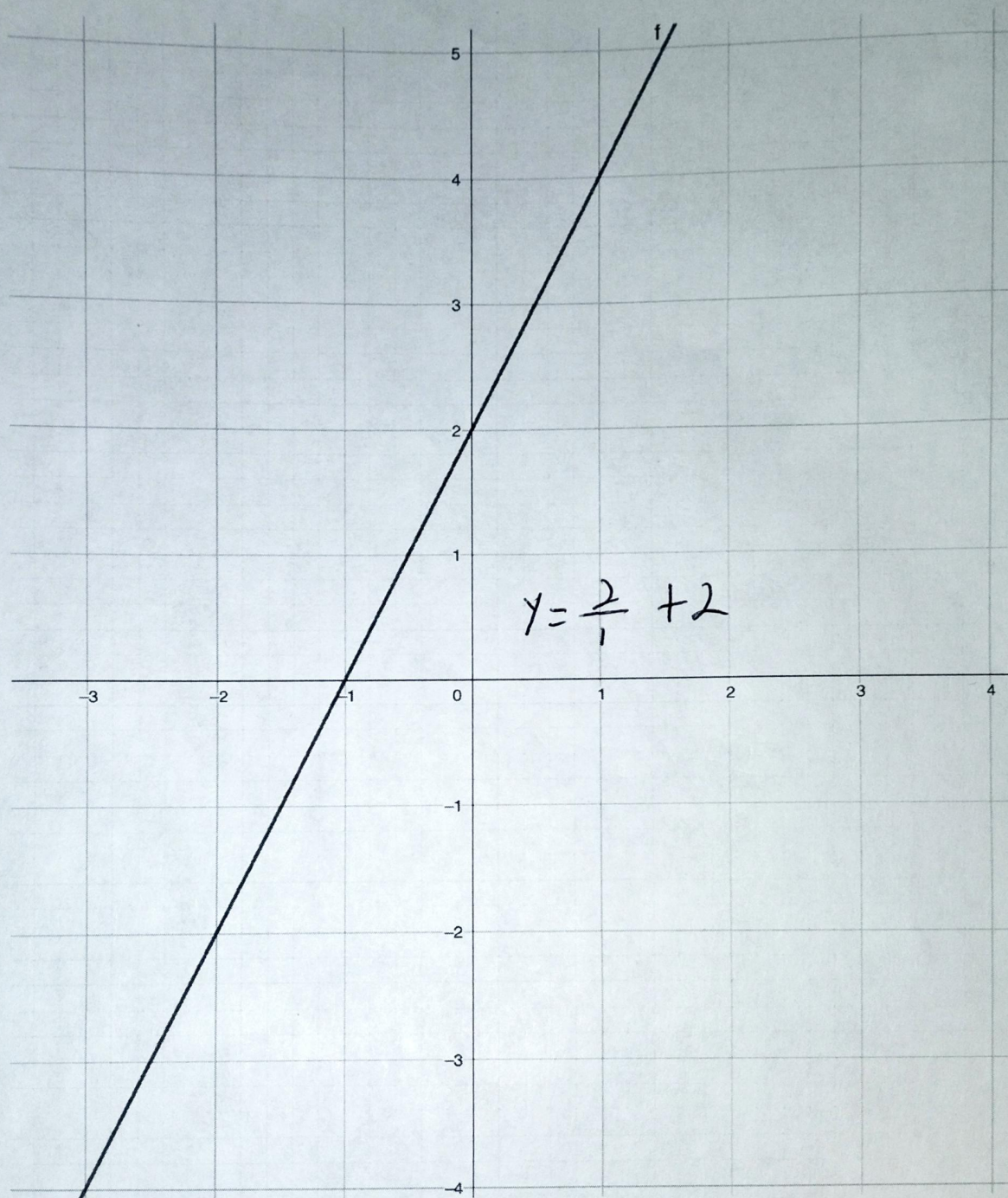


FUNCIÓN DE LA RECTA

Determina la función de la recta





Determina dos puntos que pasen por las rectas

$$y = 3x + 8 \quad \left\{ \begin{array}{l} m = 3x \\ p_1 = (0, 8) \\ p_2 = (1, 11) \end{array} \right.$$

$$y = -2x - 1 \quad \left\{ \begin{array}{l} m = 2x \\ p_1 = (0, -1) \end{array} \right.$$

$$y = 4x - 2 \quad \left\{ \begin{array}{l} p_2 = (0, -2) \end{array} \right.$$

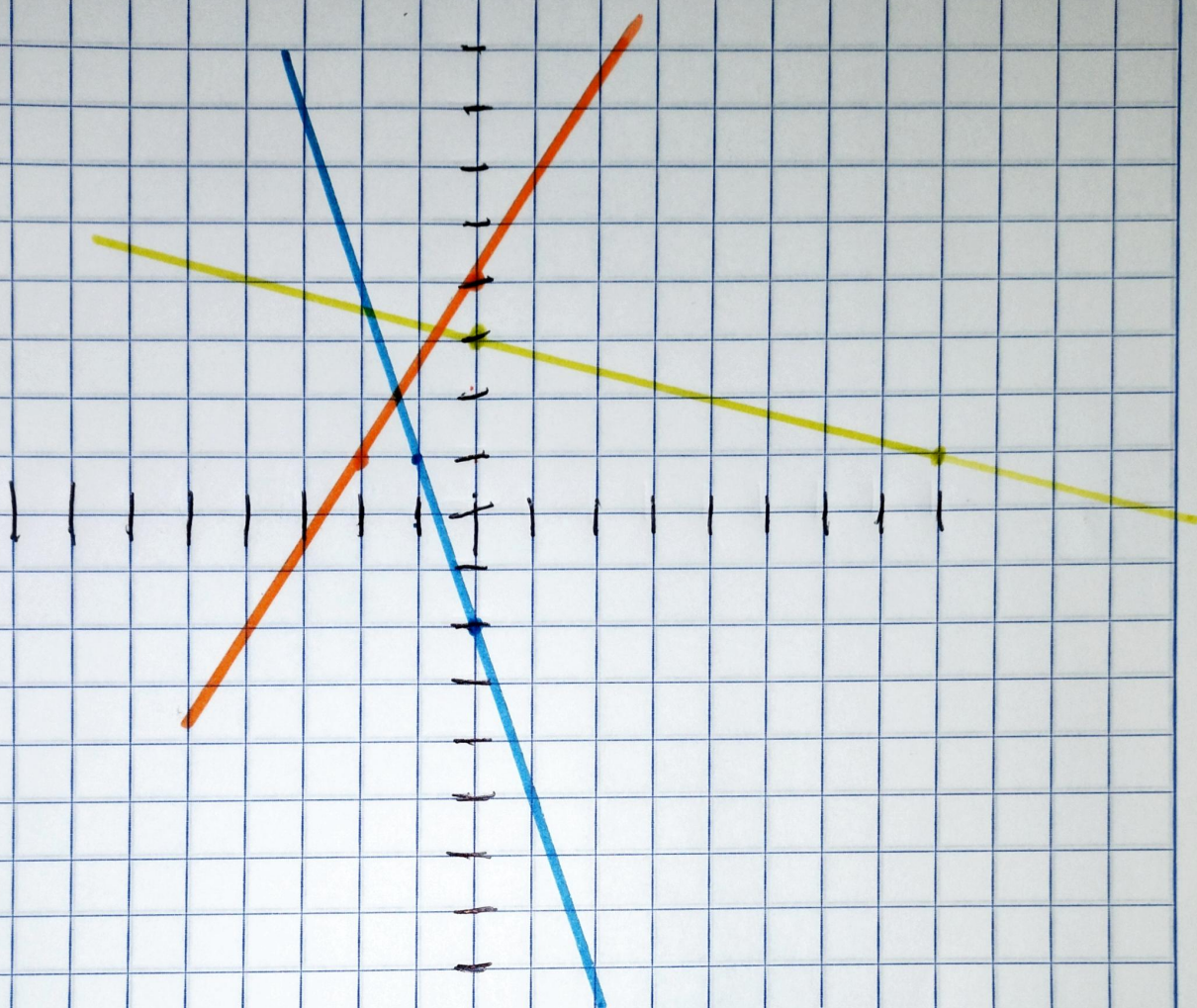
$$\left. \begin{array}{l} m = 4x \\ p_1 = (0, -2) \\ p_2 = (1, 0) \end{array} \right\}$$

Traza las siguientes funciones

$$y = 3x + 8$$

$$y = -2x - 1$$

$$y = 4x - 2$$



- $y = 3x + 8$
- $y = -2x - 1$
- $y = 4x - 2$