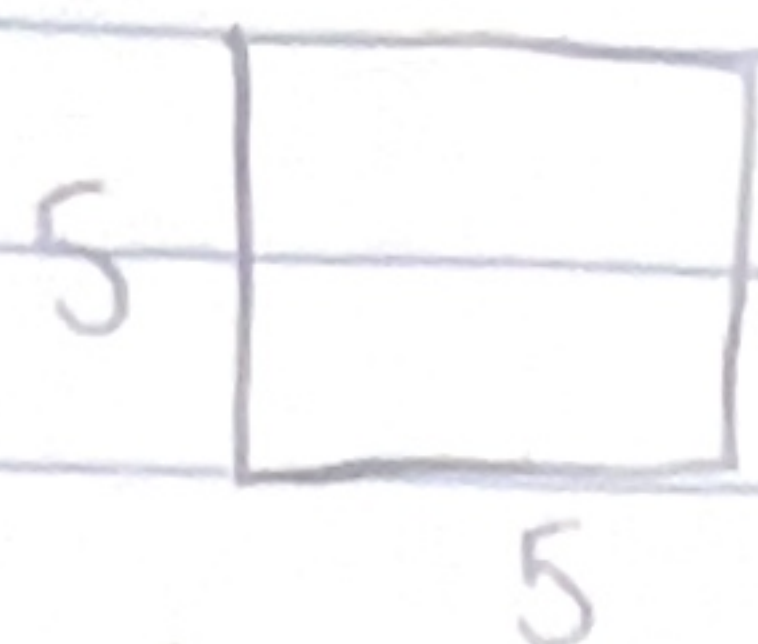


Determinar el área de las figuras

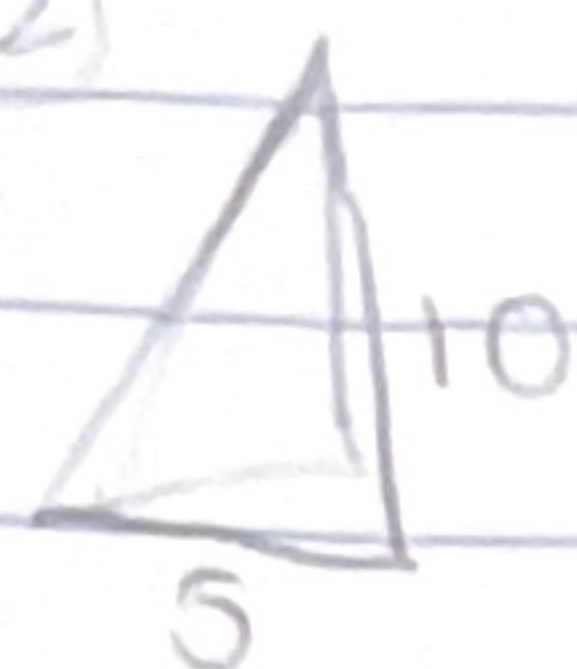
①



$$y = 5 \Rightarrow f(x) \Rightarrow 5$$

$$\int_0^5 5 \Rightarrow \int_0^5 5x \Rightarrow 5(5) = 25$$

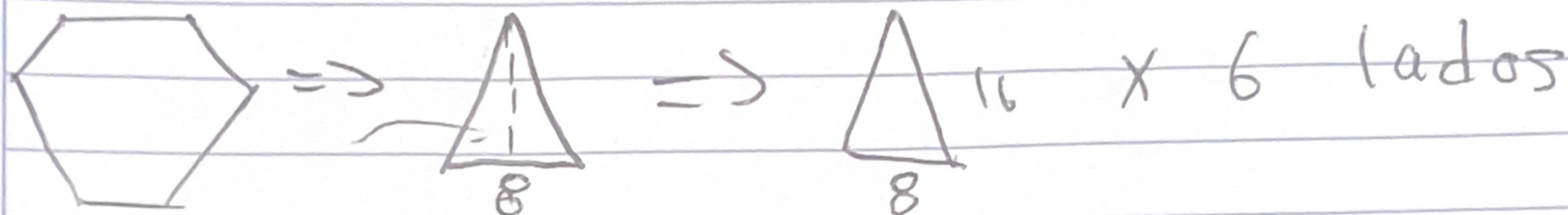
②



$$m = \frac{\Delta y}{\Delta x} \Rightarrow \frac{10}{5} = 2$$

$$y = 2x + 0 \Rightarrow \frac{10}{5} = 2x$$

$$\int_0^5 2x \Rightarrow \int_0^5 \frac{2x^2}{2} \Rightarrow \int_0^5 x^2 \Rightarrow 5^2 \Rightarrow 25$$



$$m = \frac{\Delta y}{\Delta x} \Rightarrow \frac{16}{8} \Rightarrow 2 \Rightarrow y = 2x + 0 = f(x) = 2x$$

$$\int_0^8 2x \Rightarrow \int_0^8 \frac{2x^2}{2} \Rightarrow \int_0^8 x^2 \Rightarrow 8^2 \Rightarrow (64)$$

$$(64) (6 \text{ lados}) \Rightarrow \underline{384}$$