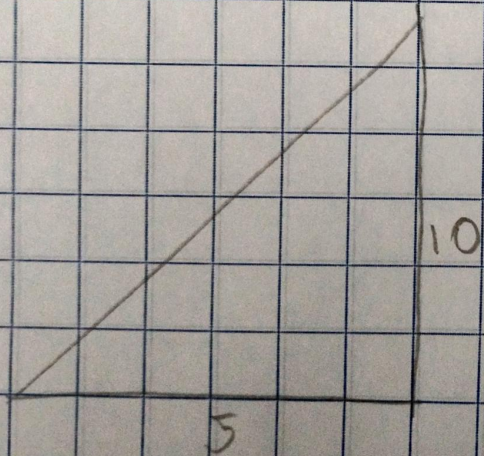


$$y = 5 \Rightarrow f(x) = 5$$

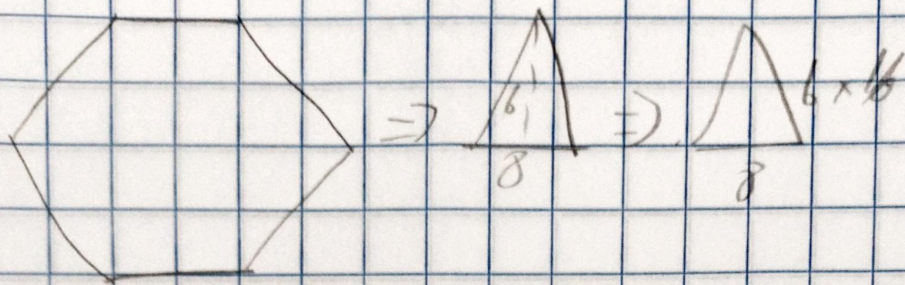
$$\int_0^5 5 \Rightarrow \int_0^5 5x = 5(5) \Rightarrow 25$$



$$m = \frac{\Delta y}{\Delta x} \Rightarrow \frac{10}{5} \Rightarrow 2$$

$$y = 2x \Rightarrow f(x) = 2x$$

$$\int_0^5 2x \Rightarrow \int_0^5 \frac{2x^2}{2} \Rightarrow \int_0^5 x^2 \Rightarrow 5^2 \Rightarrow 25$$



$$m = \frac{\Delta y}{\Delta x} \Rightarrow \frac{6}{8} \Rightarrow 2 \Rightarrow y = 2x + 0 \Rightarrow f(x) = 2x$$

$$\int_0^8 2x \Rightarrow \int_0^8 \frac{2x^2}{2} \Rightarrow \int_0^8 x \cdot 2 = 8^2 = (64) (6) \Rightarrow 384$$