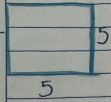
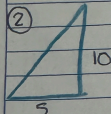


Determina el área de las figuras



$$y = 5 \Rightarrow f(x) = 5$$

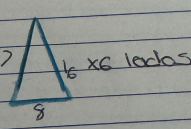
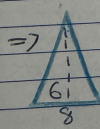
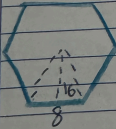
$$\int_0^5 5 \Rightarrow \int_0^5 5x \Rightarrow 5(5) \Rightarrow 25$$



$$m = \frac{\Delta y}{\Delta x} \Rightarrow \frac{10}{5} = 2$$

$$y = 2x \Rightarrow f(x) = 2x$$

$$\int_0^5 2x \Rightarrow \int_0^5 \frac{2x^2}{2} \Rightarrow \int_0^5 x^2 \Rightarrow 5^2 = 25$$



$$m = \frac{\Delta y}{\Delta x} = \frac{6}{8} = \frac{3}{4} \Rightarrow y = \frac{3}{4}x \Rightarrow f(x) = \frac{3}{4}x$$

$$\int_0^8 \frac{3}{4}x \Rightarrow \int_0^8 \frac{3x^2}{2} \Rightarrow \int_0^8 x^2 \Rightarrow 8^2 = 64 \text{ (6 sides)} = 384$$