

Marvin López Roblero

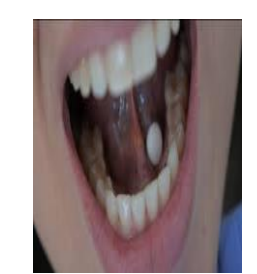
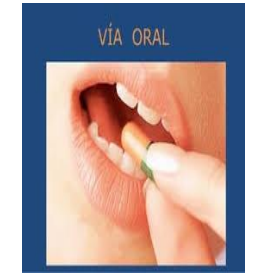
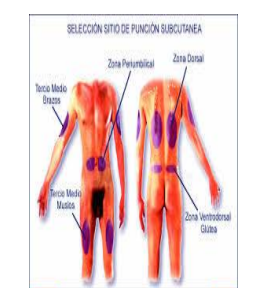
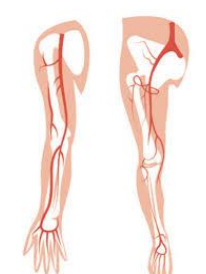
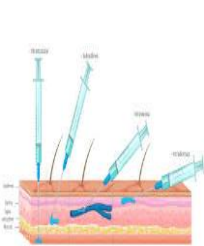
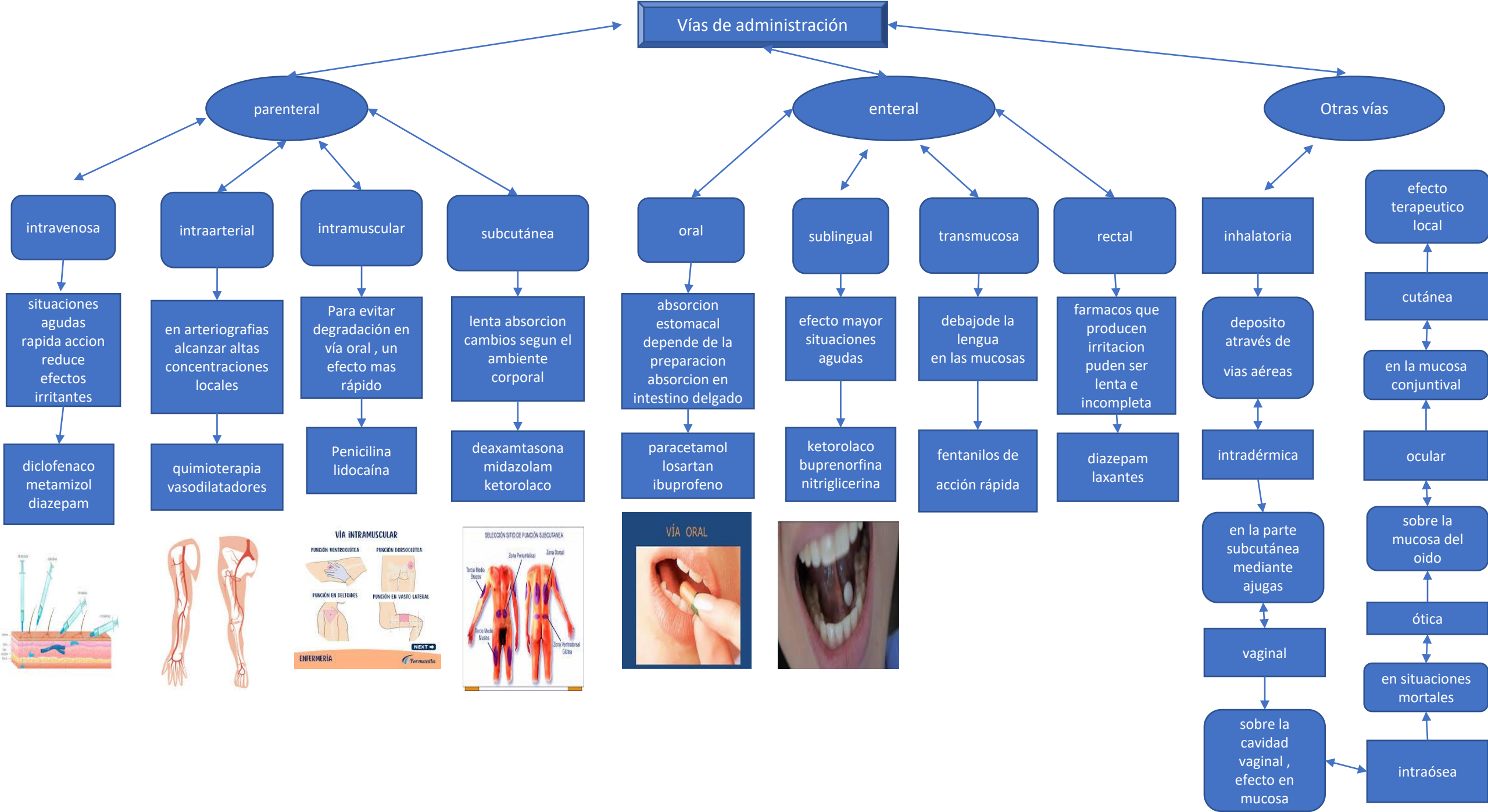
Martín López Duran

Terapéutica farmacológica

Mapa conceptual

4°

“B”



Vía de administración



Cloranfenicol

1 caja, 1 frasco gotero, 5 ml, 6 ml, 10 ml, 15 ml, 20 ml



Misofar

Caja 25 comprimidos 200 mg



Neospirin dermico

1 caja, 1 tubo, 30 mg



Salbutamol

Envase inhalador con 200 dosis-medida



Artesunato

Capsula rectal de 100 mg



Oxoral gel

1 caja, 25 cartuchos para jeringa, 1.8 g, 1 caja, 1 tubo, 28 g



Ibuprofeno

Comprimidos recubiertos de 200, 400, 600 mg



Vacuna anti hepatitis B recombinante

Excipiente cbp 0.5 ml



insulina

1 caja, 1 frasco ampula, 5 ml, 100/1 I.U. / ml y 10 ml, 100/1 I.U./ml



Vías de administración

intramuscular

Clindamicina

1 caja, 1 ampollita, 2 ml, 150 mg/ml 4 ml, 150 mg/ml
1 caja, 1 jeringa de vidrio prellenada, 600/4 mg/ml
1 caja, 5 jeringas de vidrio prellenadas, 600/4 mg/ml



intraarticular

Durolane

Durolane inyección 3 ml



intraperitoneal

Exagon

Exagon 400 mg/ML



intrapleural

Bleomicina

10 ml



Intraósea o intratecal

Epinefrina life

Caja, 10 ampollas, 1 mililitro



Intrarraquídea o intratecal

Oxytocin

Ampolla de 10UL



intraneural

Carbamazepina

5 ampolletas, 250 miligramos

