



**UNIVERSIDAD DEL SURESTE  
CAMPUS COMITAN DE DOMINGUEZ  
MEDICINA HUMANA**

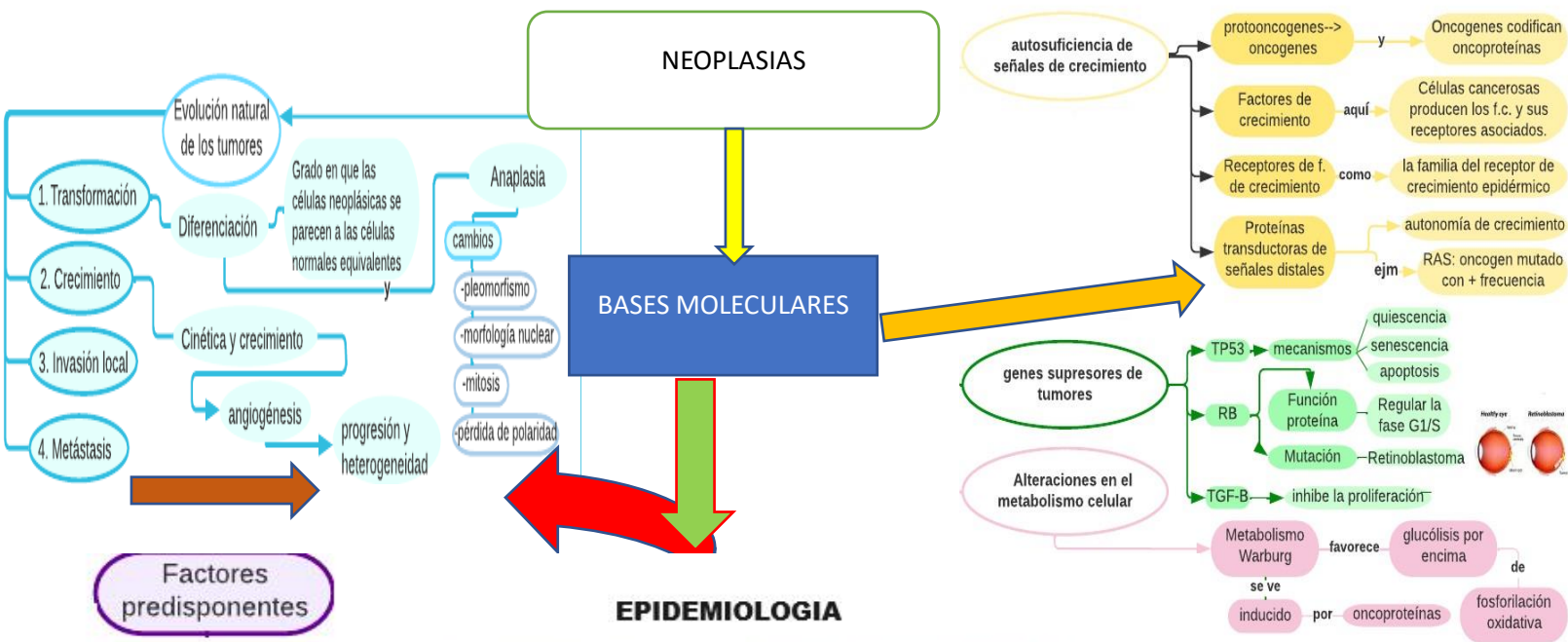
**MATERIA: FISIOPATOLOGIA**

**CATEDRATICA: DRA. KAREN ALEJANDRA  
MORALES MORENO**

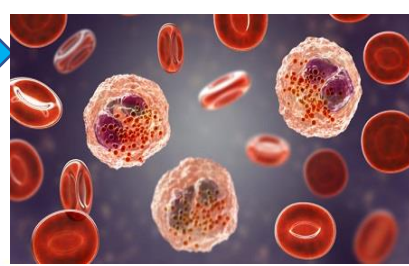
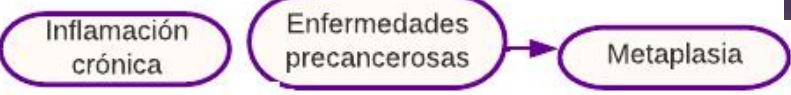
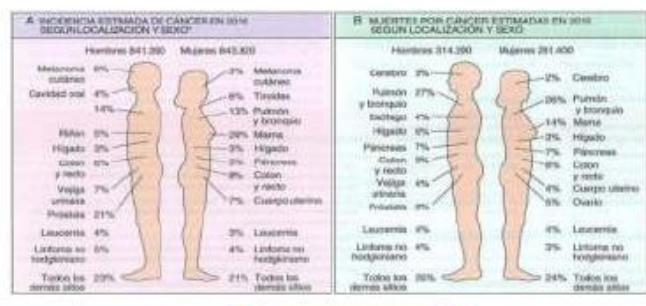
**TEMA:  
NEOPLASIAS**

**ALUMNO: PABLO ADOLFO JIMENEZ VAZQUEZ**

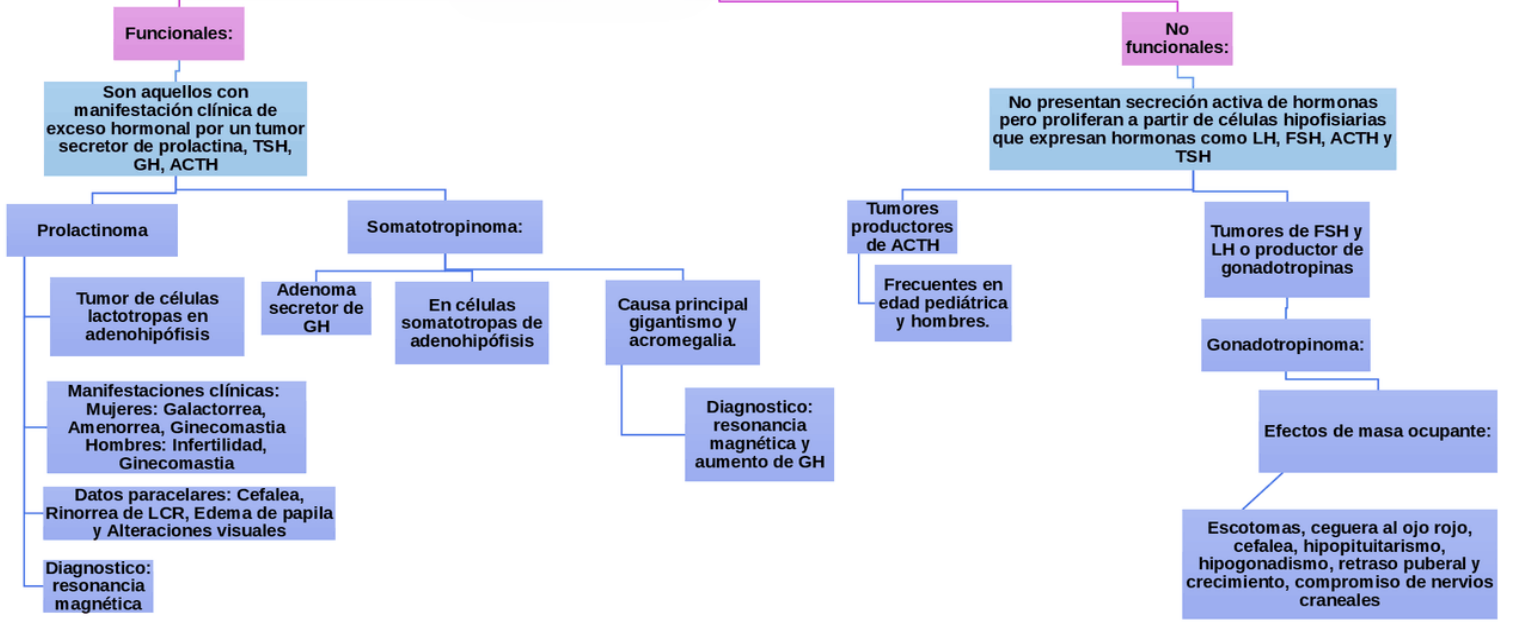
**4 SEMESTRE GRUPO B**



- Factores predisponentes**
- Edad (fx importante)
  - Ambiente (contaminación)
  - Predisposición genética
  - Enfermedades predisponentes no hereditarias



## genes supresores de tumores y hormonas



# VIH ESTRUCTURA

