

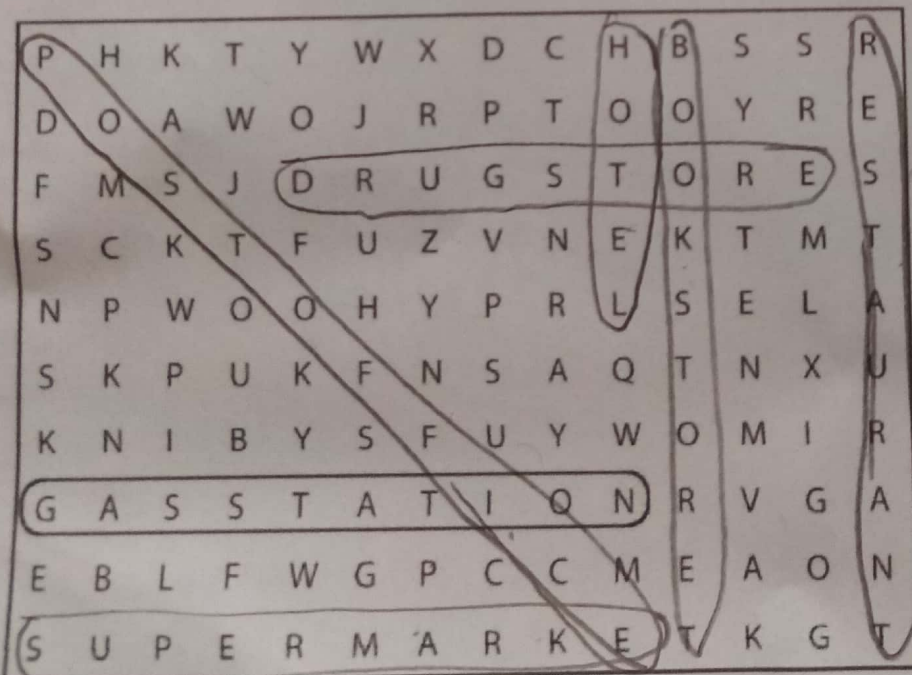
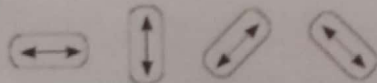
WORKBOOK

1 Places

**A** Complete these sentences with the correct places.  
Write one letter on each line.

- We need gasoline for the car. Is there a g a s e s t a t i o n near here?
- I'm going to go to the B a n k. I need some traveler's checks.
- I work at a B o o k s t o r e. I love books, so it's a great job.
- Are you going to the P o s t o f f i c e? I need some stamps.
- We don't have anything for dinner. Let's buy some food at the S u p e r m a r k e t.
- Tomorrow we're going to go to Paris for five days. We're going to stay at an expensive H o t e l.
- I have a stomachache. Can you buy some antacid at the P h a r m a c y?
- Let's go out for lunch. There's a great Mexican R e s t a u r a n t downtown.

**B** Find and circle the places in part A in the puzzle.



2

Look at the map. Complete the sentences with the prepositions in the box.

*crúzando* *escondido*

<input type="checkbox"/> across from	<input type="checkbox"/> between	<input checked="" type="checkbox"/> on
<input type="checkbox"/> behind	<input type="checkbox"/> next to	<input type="checkbox"/> on the corner of

*detrás de* *alado de* *en la esquina de.*

- The English school is on Catherine Street.
- The hospital is behind the hotel.
- The Mexican restaurant is between Beatrice Street and Fourth Avenue.
- The bank is on Barbara Street, on the corner of Sixth and Seventh Avenues.
- The bookstore is next to the English school.
- The coffee shop is across from the park.

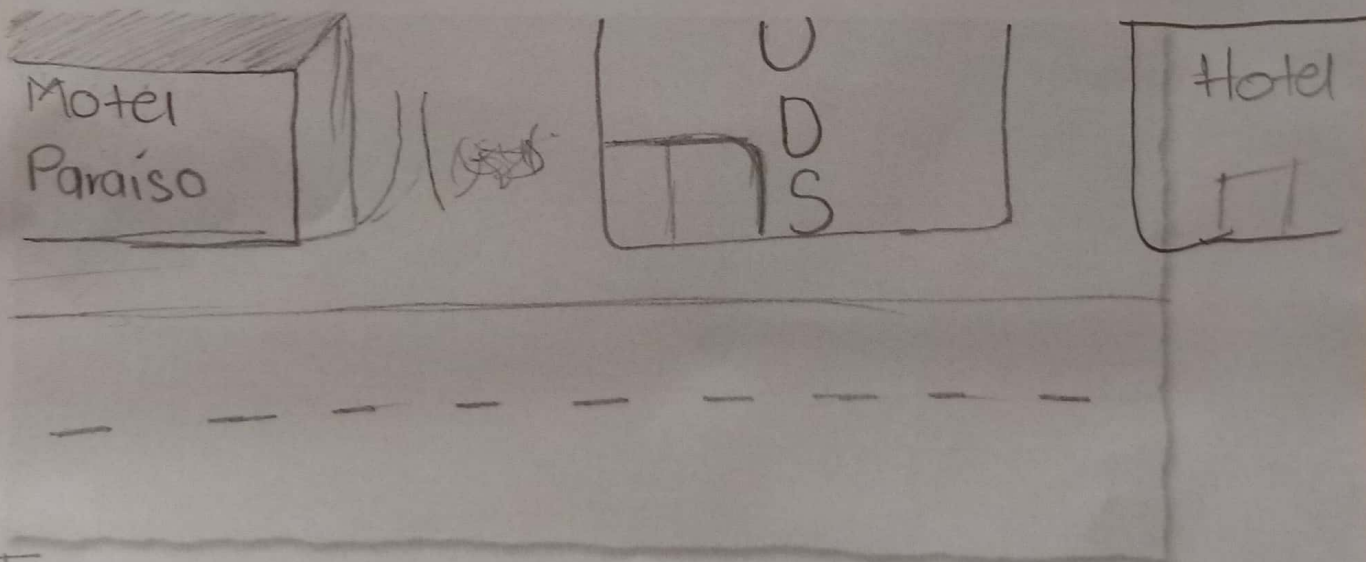


**3** Where is it?

**A** Look at the map in Exercise 2 again. Where is each place? Write two sentences.

1. bookstore The bookstore is on the corner of Catherine Street and Fifth Avenue. It's next to the English school.
2. supermarket is Next to coffee shop  
is on the corner of fourth Ave.
3. department store is On the corner of Beatrice St  
is Next to Drugstore
4. gas station is behind of Mexican restaurant  
is between Beatrice street and fourth Ave.
5. Chinese restaurant on the corner of sixth Ave.  
is across from Barbara St
6. hotel is on the corner of Catherine St  
is Next to Book store
7. post office is Next to cafe  
is on the corner of sixth Ave.
8. drugstore is Between department store and Mexican Restaurant  
is on Beatrice St.

**B** Where is your school? Draw a map. Then write two sentences.



The UDS is between motel paraiso and hotel  
the UDS is on Tzimol highway



**4** Complete the conversation. Use the sentences and questions in the box.

- |   |   |
|---|---|
| <input checked="" type="checkbox"/> Next to the café?                   | <input checked="" type="checkbox"/> Excuse me. Can you help me? |
| <input checked="" type="checkbox"/> Is there a post office around here? | <input checked="" type="checkbox"/> Where on Diane Street?      |
| <input checked="" type="checkbox"/> Thanks a lot.                       |   |

Rachel: Excuse me. Can you help me?

Man: Sure.

Rachel: Where on Diane Street?

Man: Yes, there is. It's on Diane Street.

Rachel: Is there a post office around here?

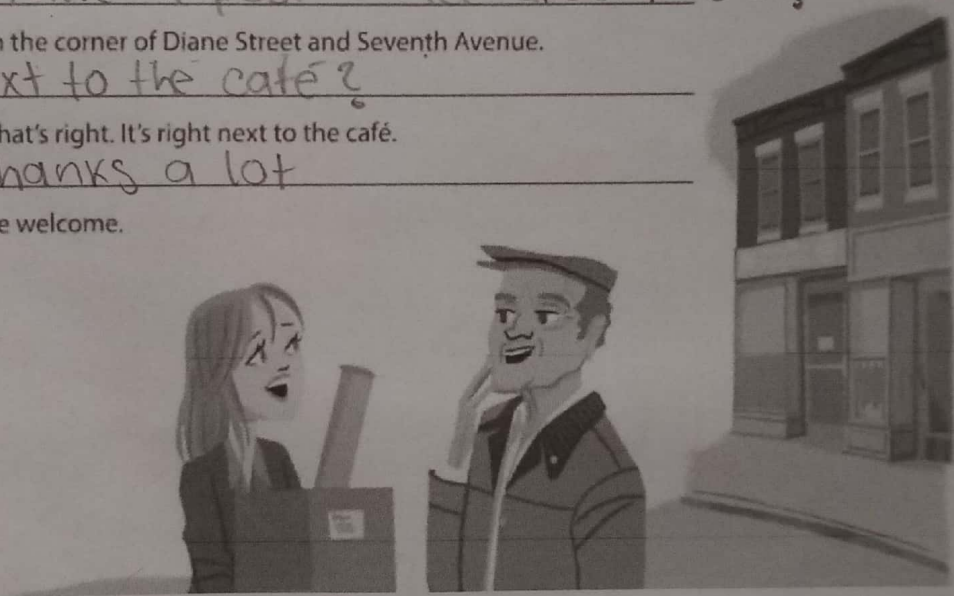
Man: It's on the corner of Diane Street and Seventh Avenue.

Rachel: Next to the café?

Man: Yes, that's right. It's right next to the café.

Rachel: Thanks a lot.

Man: You're welcome.



**5** Complete the sentences with the opposites.

1. Don't turn *right* on Fifth Avenue. Turn left.
2. The Waverly Hotel isn't *in front of* the concert hall. It's behind it.
3. Don't walk *down* Columbus Avenue. Walk up Columbus Avenue.
4. The museum isn't on the left. It's on the right.
5. The Empire State Building is *far from* here, but Central Park is near here.  
You can walk there.

6 Look at the map. Give these people directions. Use the phrases and sentences in the box.

129- *camina hacia arriba*  
 Walk up/Go up . . . Street/Avenue.  
 Turn left on . . . Street/Avenue.  
 Walk to . . . Street/Avenue.  
*Abajo*  
 Walk down/Go down . . . Street/Avenue.  
 Turn right on . . . Street/Avenue.  
 It's on the left/right.  
*Derecha*  
*5000 la 129*



1. Sophia is looking for the Mexican restaurant.

Go up Fifth Avenue. Turn left on Beatrice Street.

Walk to Fourth Avenue. It's on the right.

2. Kate is looking for the post office.

walk to catherine street. turn right on sixth Ave.  
turn right on fifth Ave. walk down Diane st.

3. Bob is looking for the supermarket.

walk up seventh Ave. Turn left on Diane st.  
walk up seventh Ave. it's on the left catherine st.

4. Jim is looking for the bank.

walk down fifth ave. turn right Barbara st  
It's on the left Barbara st.