

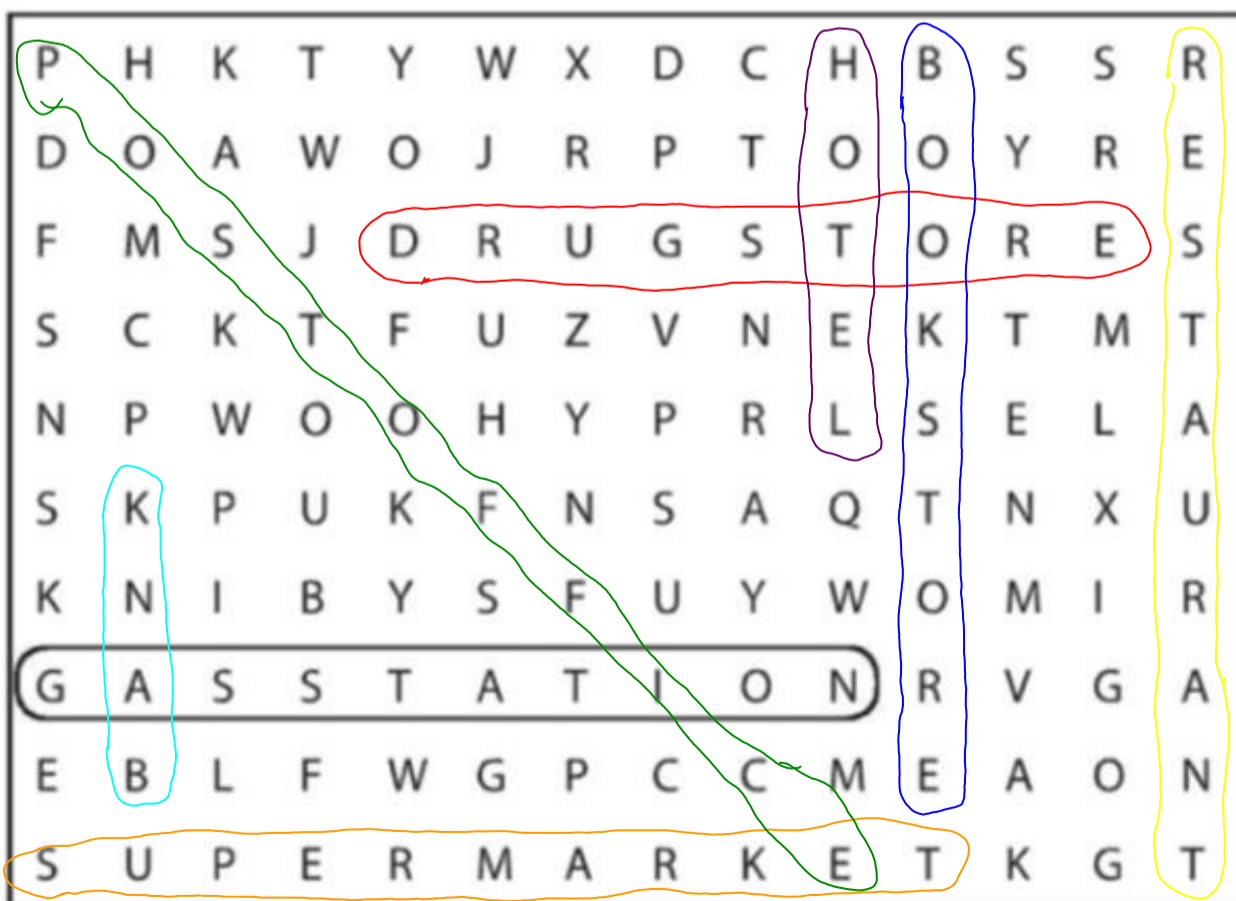
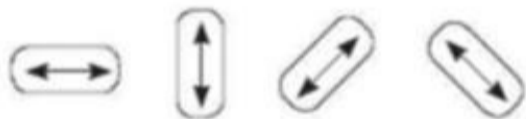
WORKBOOK

1 Places

**A** Complete these sentences with the correct places.  
Write one letter on each line.

- We need gasoline for the car. Is there a g a s s t a t i o n near here?
- I'm going to go to the B a n k. I need some traveler's checks.
- I work at a B o o k s t o r e. I love books, so it's a great job.
- Are you going to the P o s t o f f i c e? I need some stamps.
- We don't have anything for dinner. Let's buy some food at the S u p e r m a r k e t.
- Tomorrow we're going to go to Paris for five days. We're going to stay at an expensive H o t e l.
- I have a stomachache. Can you buy some antacid at the D r u g s t o r e?
- Let's go out for lunch. There's a great Mexican R e s t a u r a n t downtown.

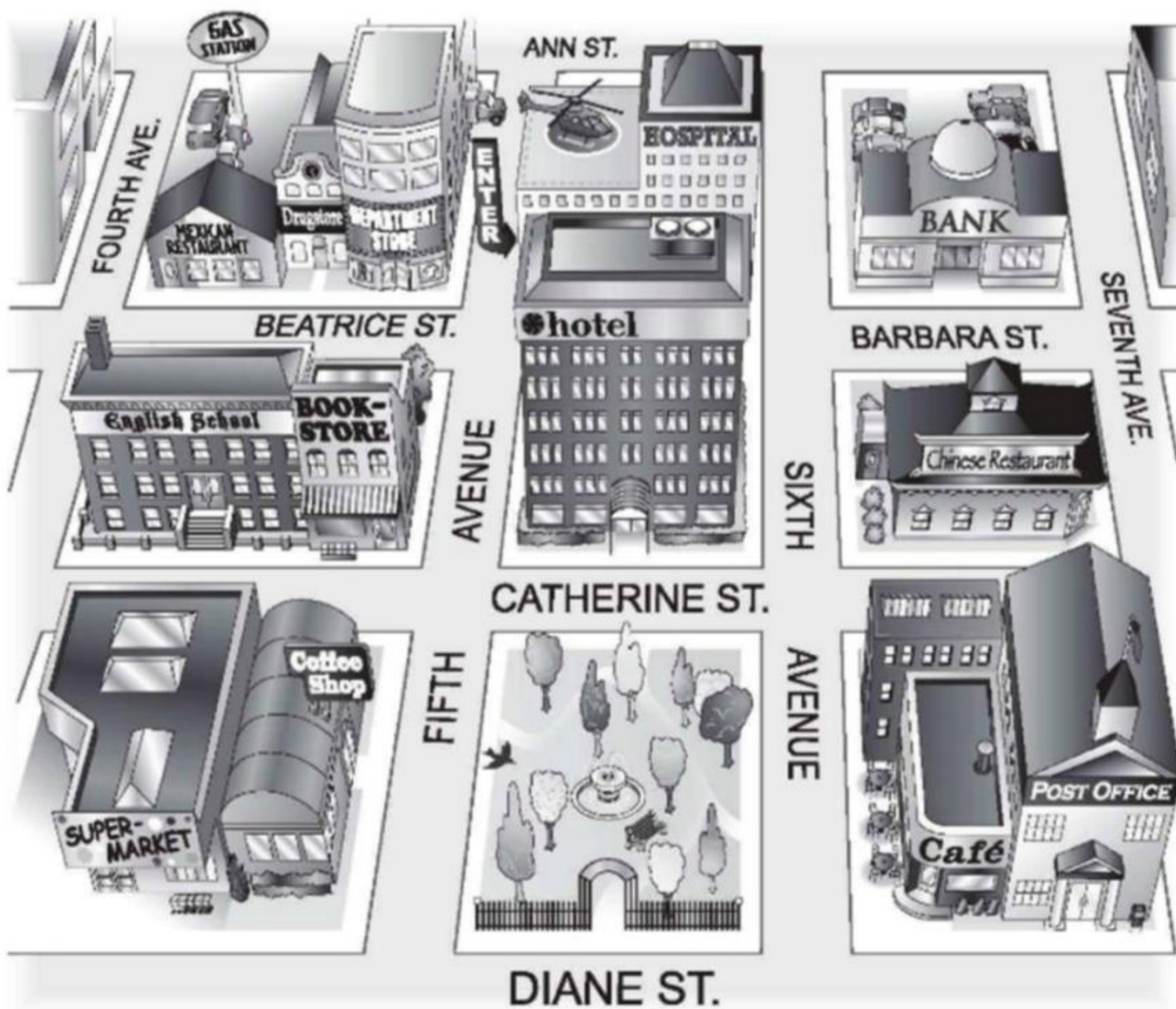
**B** Find and circle the places in part A in the puzzle.



2 Look at the map. Complete the sentences with the prepositions in the box.

- |   |   |  |
|---|---|--|
| <input checked="" type="checkbox"/> across from | <input checked="" type="checkbox"/> between | <input checked="" type="checkbox"/> on               |
| <input type="checkbox"/> behind                 | <input checked="" type="checkbox"/> next to | <input checked="" type="checkbox"/> on the corner of |

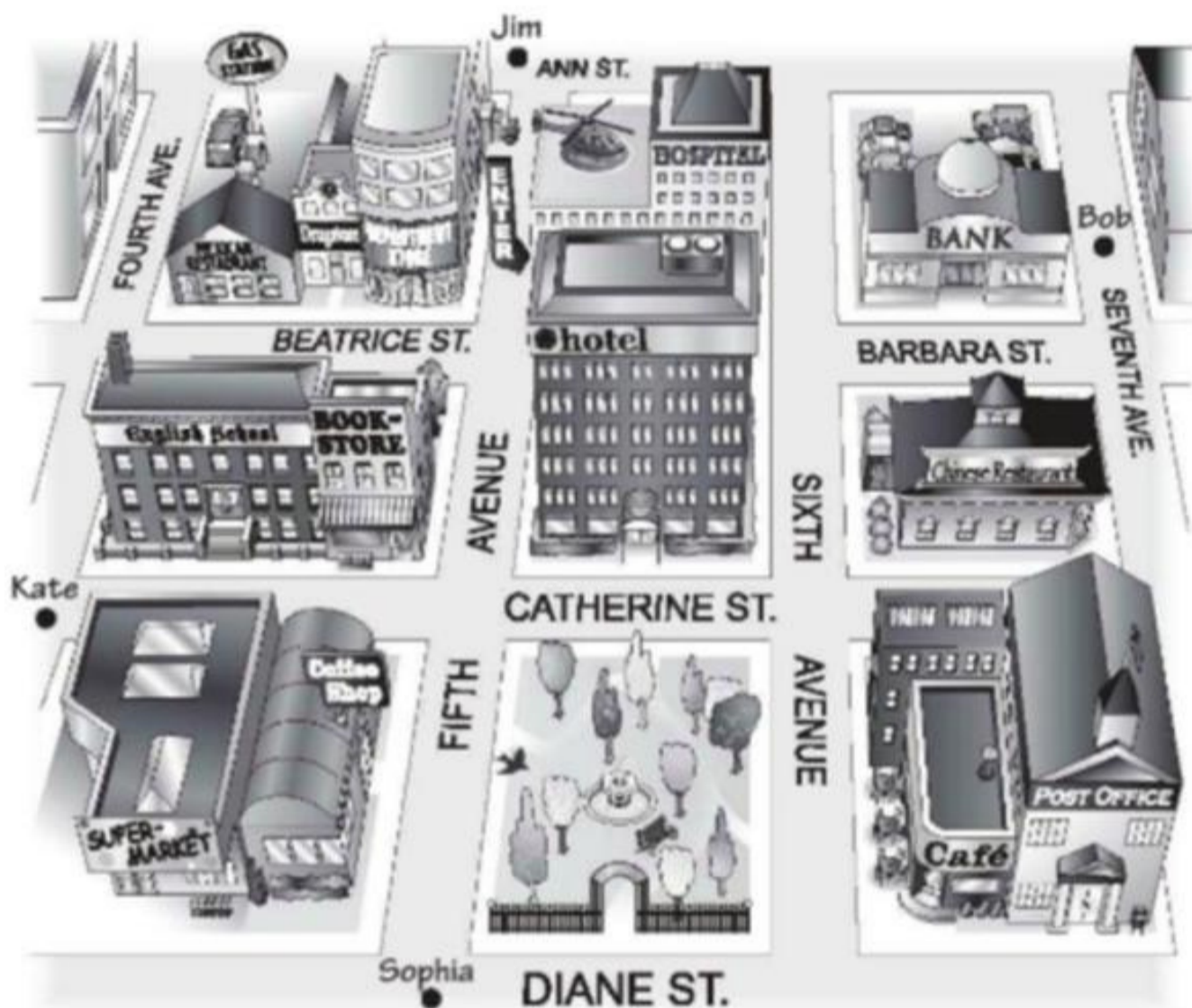
- The English school is on Catherine Street.
- The hospital is behind the hotel.
- The Mexican restaurant is on the corner of Beatrice Street and Fourth Avenue.
- The bank is on Barbara Street, between Sixth and Seventh Avenues.
- The bookstore is next to the English school.
- The coffee shop is across from the park.



- 6** Look at the map. Give these people directions. Use the phrases and sentences in the box.

Walk up/Go up . . . Street/Avenue.  
Turn left on . . . Street/Avenue.  
Walk to . . . Street/Avenue.

Walk down/Go down . . . Street/Avenue.  
Turn right on . . . Street/Avenue.  
It's on the left/right.



1. Sophia is looking for the Mexican restaurant.

Go up Fifth Avenue. Turn left on Beatrice Street.

Walk to Fourth Avenue. It's on the right.

2. Kate is looking for the post office.

Go up Catherine Street, turn right on sixth avenue  
walk to Diane street, turn left, it's on the left

3. Bob is looking for the supermarket.

Go down seventh avenue, turn right on Diane Street  
walk to fourth avenue, it's on the right

4. Jim is looking for the bank.

Go up Ann Street, turn right on sixth avenue  
turn left on Barbara Street, walk to seventh avenue, it's on the left