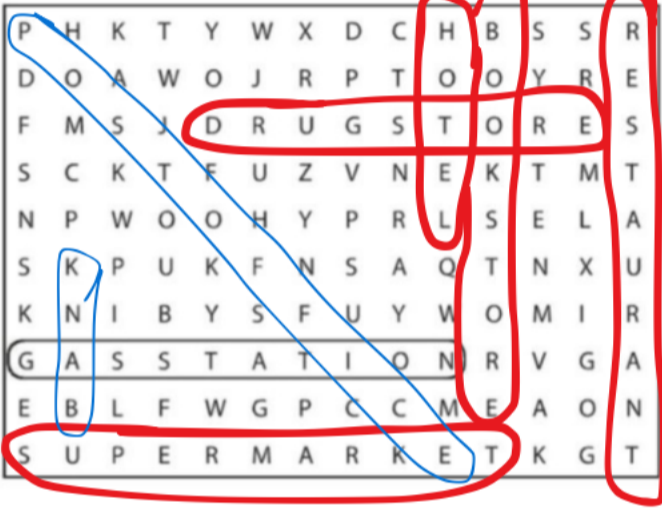


1 Places

A Complete these sentences with the correct places. Write one letter on each line.

- We need gasoline for the car. Is there a gas station near here?
- I'm going to go to the Bank. I need some traveler's checks.
- I work at a bookshop. I love books, so it's a great job.
- Are you going to the Post office? I need some stamps.
- We don't have anything for dinner. Let's buy some food at the Supermarket.
- Tomorrow we're going to go to Paris for five days. We're going to stay at an expensive Hotel.
- I have a stomachache. Can you buy some antacid at the drugstore?
- Let's go out for lunch. There's a great Mexican Restaurant downtown.

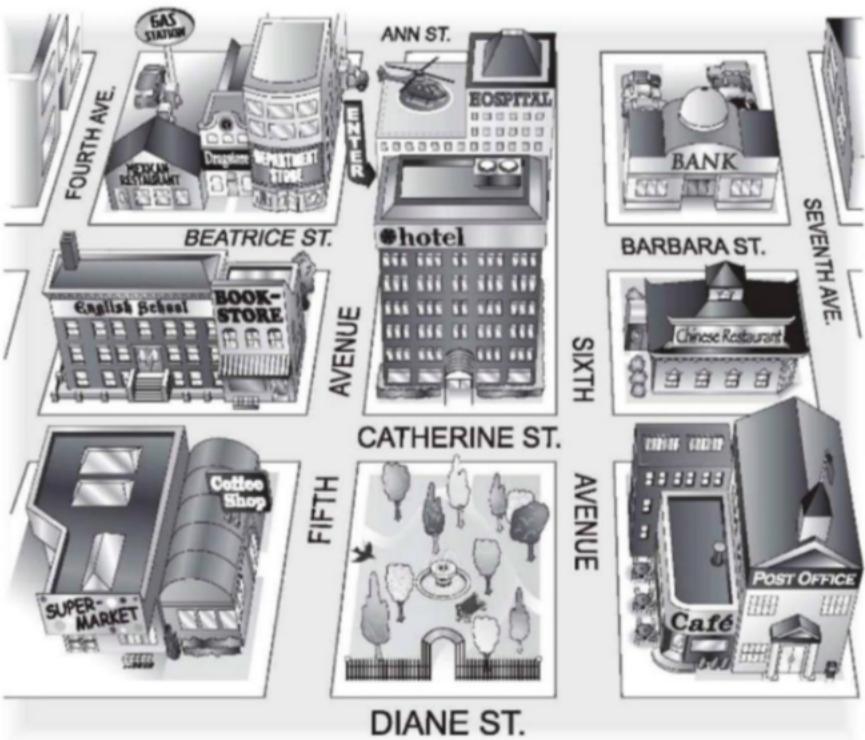
B Find and circle the places in part A in the puzzle.



2 Look at the map. Complete the sentences with the prepositions in the box.

- across from
- behind
- between
- next to
- on
- on the corner of

- The English school is on Catherine Street.
- The hospital is Behind the hotel.
- The Mexican restaurant is On the corner of Beatrice Street and Fourth Avenue.
- The bank is on Barbara Street, Between Sixth and Seventh Avenues.
- The bookstore is Next to the English school.
- The coffee shop is Across from the park.



6 Look at the map. Give these people directions. Use the phrases and sentences in the box.

Walk up/Go up . . . Street/Avenue. Walk down/Go down . . . Street/Avenue.
 Turn left on . . . Street/Avenue. Turn right on . . . Street/Avenue.
 Walk to . . . Street/Avenue. It's on the left/right.



1. Sophia is looking for the Mexican restaurant.
 Go up Fifth Avenue. Turn left on Beatrice Street.
 Walk to Fourth Avenue. It's on the right.
2. Kate is looking for the post office.
 Straight a head and turn right go ahead two blocks and turn right
 one block and turn left on Diane street
3. Bob is looking for the supermarket.
 straight a head and turn right, go down and turn right and turn
 left
4. Jim is looking for the bank.
 Straight a head and turn left next to hospital