

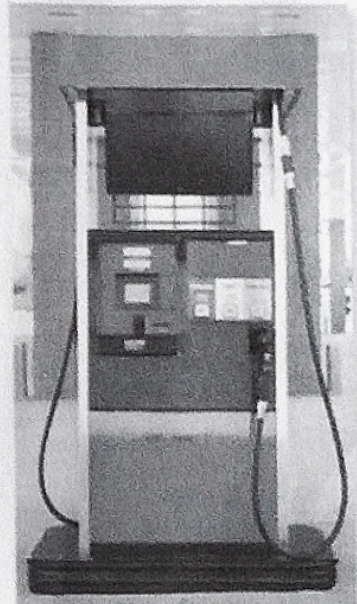
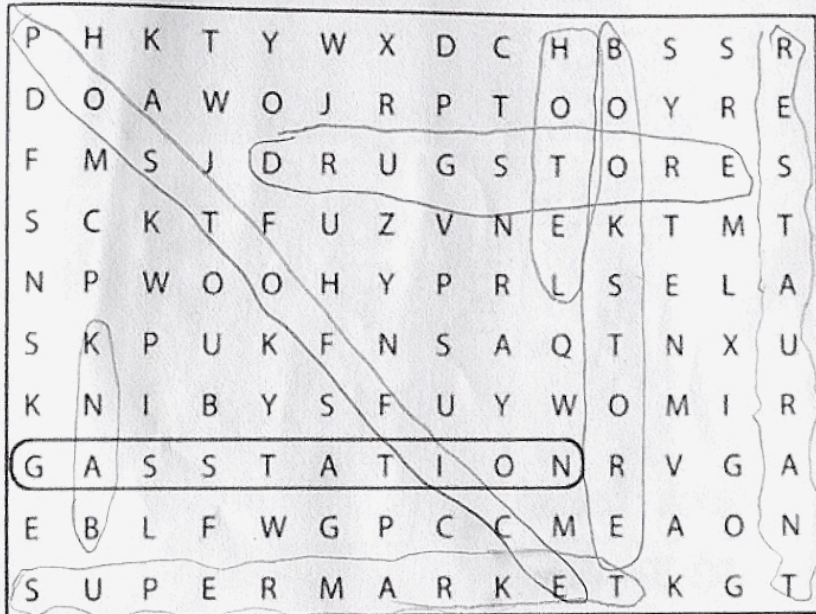
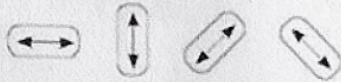
# WORKBOOK

## 1 Places

**A** Complete these sentences with the correct places.  
Write one letter on each line.

- We need gasoline for the car. Is there a g a s s t a t i o n near here?
- I'm going to go to the B a n k. I need some traveler's checks.
- I work at a B o o k s t o r e. I love books, so it's a great job.
- Are you going to the P o s t o f f i c e? I need some stamps.
- We don't have anything for dinner. Let's buy some food at the S u p e r m a r k e t.
- Tomorrow we're going to go to Paris for five days. We're going to stay at an expensive h o t e l.
- I have a stomachache. Can you buy some antacid at the D r u g s t o r e?
- Let's go out for lunch. There's a great Mexican r e s t a u r a n t downtown.

**B** Find and circle the places in part A in the puzzle.

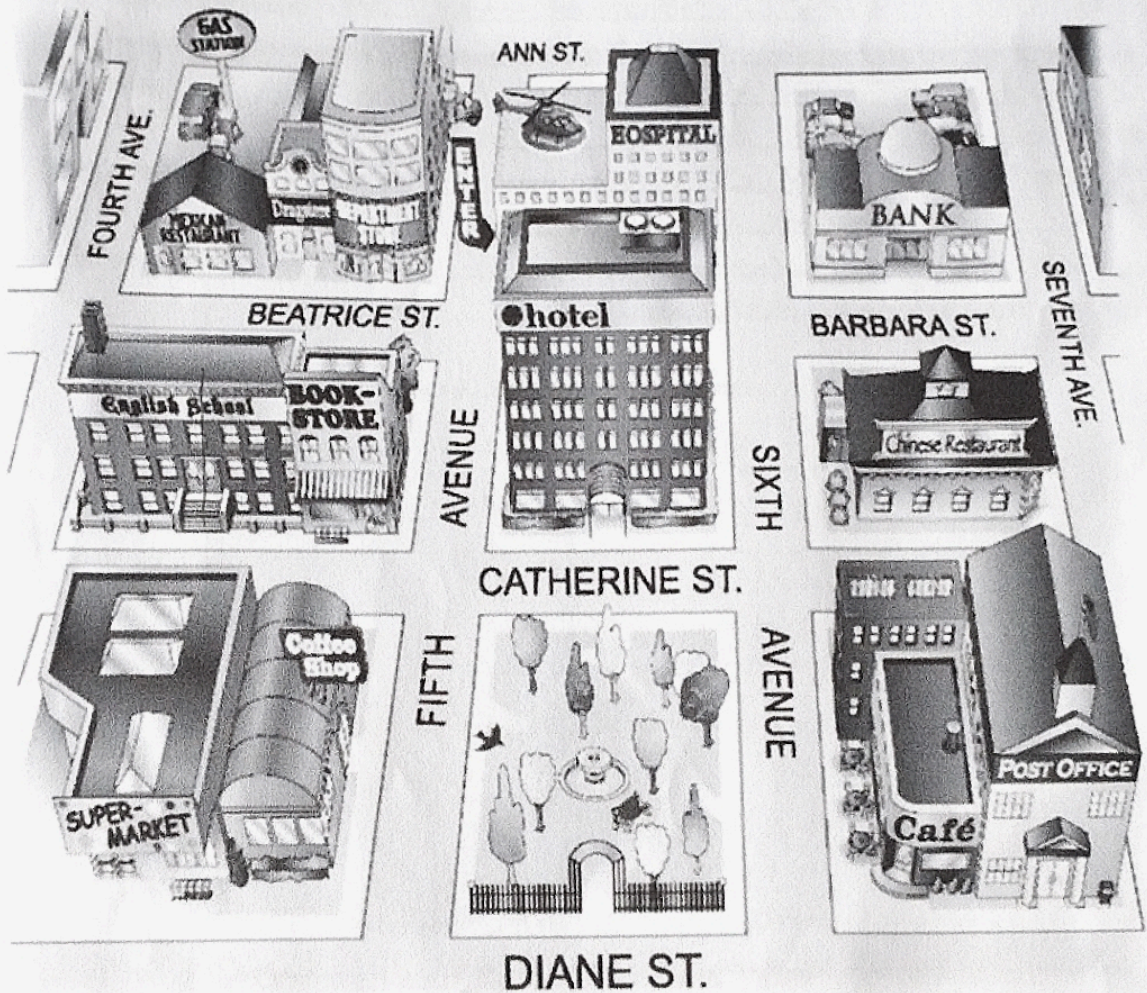


2

Look at the map. Complete the sentences with the prepositions in the box.

- |  |                                  |   |
|--|----------------------------------|---|
| <input type="checkbox"/> across from       | <input type="checkbox"/> between | <input checked="" type="checkbox"/> on    |
| <input checked="" type="checkbox"/> behind | <input type="checkbox"/> next to | <input type="checkbox"/> on the corner of |

- The English school is on Catherine Street.
- The hospital is behind the hotel.
- The Mexican restaurant is on the corner of Beatrice Street and Fourth Avenue.
- The bank is on Barbara Street, between Sixth and Seventh Avenues.
- The bookstore is next to the English school.
- The coffee shop is across from the park.

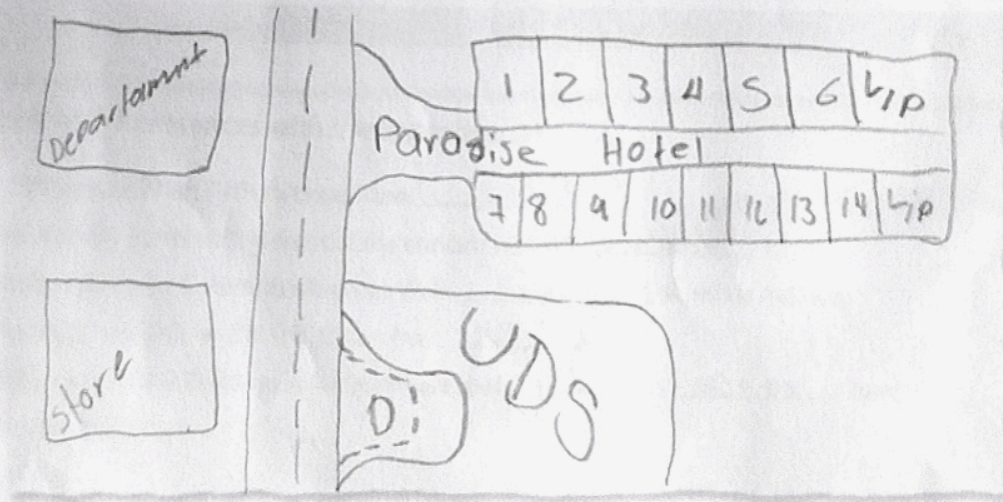


**3** Where is it?

**A** Look at the map in Exercise 2 again. Where is each place? Write two sentences.

1. bookstore The bookstore is on the corner of Catherine Street and Fifth Avenue. It's next to the English school.
2. supermarket The supermarket is in front of the bookstore.
3. department store The department store is behind the bookstore.
4. gas station The department store is between the hospital and the gas station.  
The gas station is behind the English school.
5. Chinese restaurant The gas station is on the corner of Fifth Ave.  
The Chinese restaurant is behind the post office.
6. hotel The Chinese restaurant is between the six and seventh street.  
The hotel is in front of the hospital.
7. post office The hotel is between the Chinese restaurant and the post office.  
The post office is next to of course the bookstore and behind Chinese restaurant.
8. drugstore The drugstore is between department store and Mexican restaurant.

**B** Where is your school? Draw a map. Then write two sentences.



My school is next to Paradise Hotel  
My school is a cross from store.

4

Complete the conversation. Use the sentences and questions in the box.

- |  |   |
|--|---|
| <input type="checkbox"/> Next to the café?                   | <input checked="" type="checkbox"/> Excuse me. Can you help me? |
| <input type="checkbox"/> Is there a post office around here? | <input type="checkbox"/> Where on Diane Street?                 |
| <input type="checkbox"/> Thanks a lot.                       |   |

Rachel: Excuse me. Can you help me?

Man: Sure.

Rachel: Where on Diane street

Man: Yes, there is. It's on Diane Street.

Rachel: Next to the café?

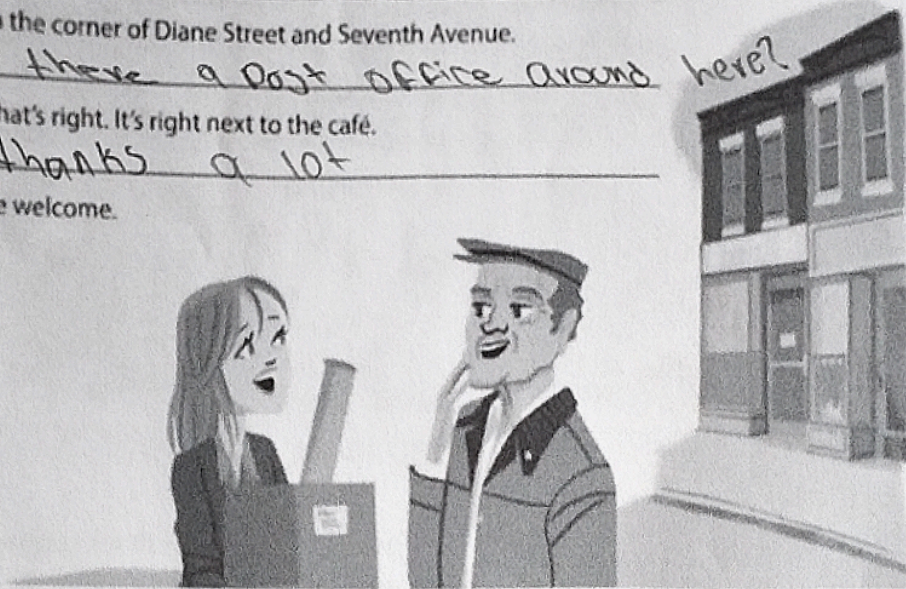
Man: It's on the corner of Diane Street and Seventh Avenue.

Rachel: Is there a post office around here?

Man: Yes, that's right. It's right next to the café.

Rachel: Thanks a lot

Man: You're welcome.



5

Complete the sentences with the opposites.

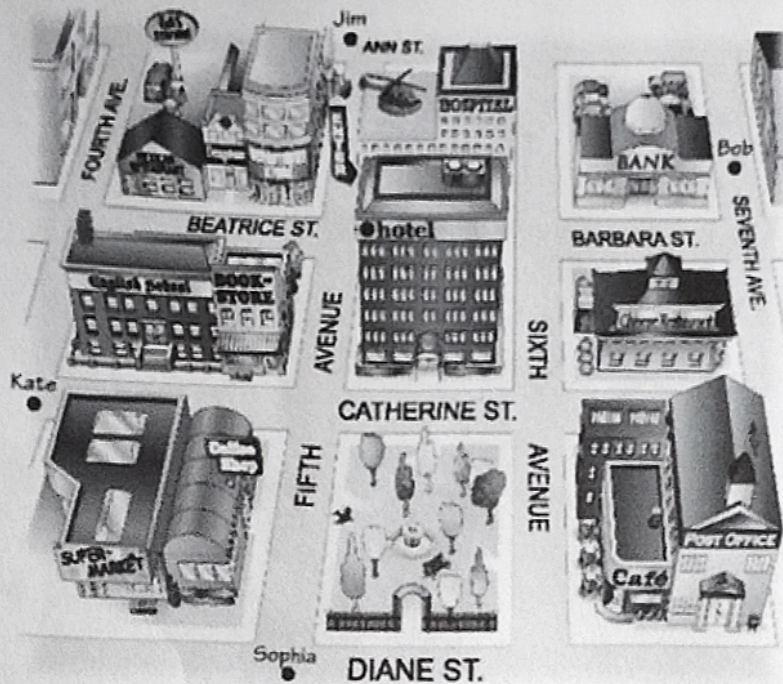
1. Don't turn *right* on Fifth Avenue. Turn left.
2. The Waverly Hotel isn't *in front of* the concert hall. It's behind it.
3. Don't walk *down* Columbus Avenue. Walk up Columbus Avenue.
4. The museum isn't on the *left*. It's on the right.
5. The Empire State Building is *far* from here, but Central Park is near here.  
You can walk there.

6

Look at the map. Give these people directions. Use the phrases and sentences in the box.

Walk up/Go up . . . Street/Avenue.  
Turn left on . . . Street/Avenue.  
Walk to . . . Street/Avenue

Walk down/Go down . . . Street/Avenue.  
Turn right on . . . Street/Avenue.  
It's on the left/right



1. Sophia is looking for the Mexican restaurant.

Go up Fifth Avenue. Turn left on Beatrice Street.

Walk to Fourth Avenue. It's on the right.

2. Kate is looking for the post office.

walk up Sixth Avenue, then turn right, the  
post office is next to the coffee

3. Bob is looking for the supermarket.

Walk up Seventh Avenue, then turn left and walk  
Beatrice St, until you reach Fourth Avenue, the

4. Jim is looking for the bank. turn up, on the right in the super market  
walk up until Beatrice St, then turn right,  
the bank is on the corner of Barbara St.