

WORKBOOK

1 Places

A Complete these sentences with the correct places.
Write one letter on each line.

1. We need gasoline for the car. Is there a

g a s o l i n e s t a t i o n near here?

2. I'm going to go to the bank. I need some traveler's checks.

3. I work at a bookstore. I love books, so it's a great job.

4. Are you going to the post office? I need some stamps.

5. We don't have anything for dinner. Let's buy some food at the

supermarket.

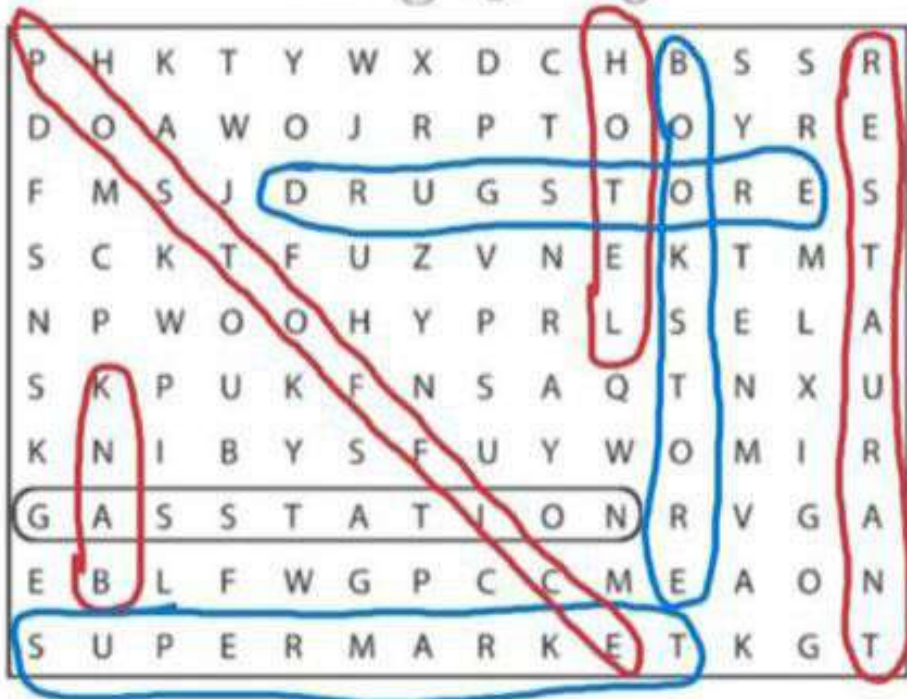
6. Tomorrow we're going to go to Paris for five days. We're going to stay

at an expensive hotel.

7. I have a stomachache. Can you buy some antacid at the drugs store?

8. Let's go out for lunch. There's a great Mexican restaurant downtown.

B Find and circle the places in part A in the puzzle.



6

Look at the map. Give these people directions. Use the phrases and sentences in the box.

Walk up/Go up . . . Street/Avenue.
Turn left on . . . Street/Avenue.
Walk to . . . Street/Avenue.

Walk down/Go down . . . Street/Avenue.
Turn right on . . . Street/Avenue.
It's on the left/right.



1. Sophia is looking for the Mexican restaurant.

Go up Fifth Avenue. Turn left on Beatrice Street.

Walk to Fourth Avenue. It's on the right.

2. Kate is looking for the post office.

walk down catherine st. Turn right on sixth turn left on
diane st. walk to seventh avenues. It's on the left

3. Bob is looking for the supermarket.

Go down sevent avenues. turn righth on diane st.
walk fourth avenues. It's on the right.

4. Jim is looking for the bank.

Go up am st. Turn righty on sixth avenue. walk down sixth
avenues . Turn left on barbara st. It's on the left

1. The English school is on Catherine Street.
2. The hospital is **behind** the hotel.
3. The Mexican restaurant is on the corner of Beatrice Street and Fourth Avenue.
4. The bank is on Barbara Street, between Sixth and Seventh Avenues.
5. The bookstore is next to the English school.
6. The coffee shop is across from the park.

