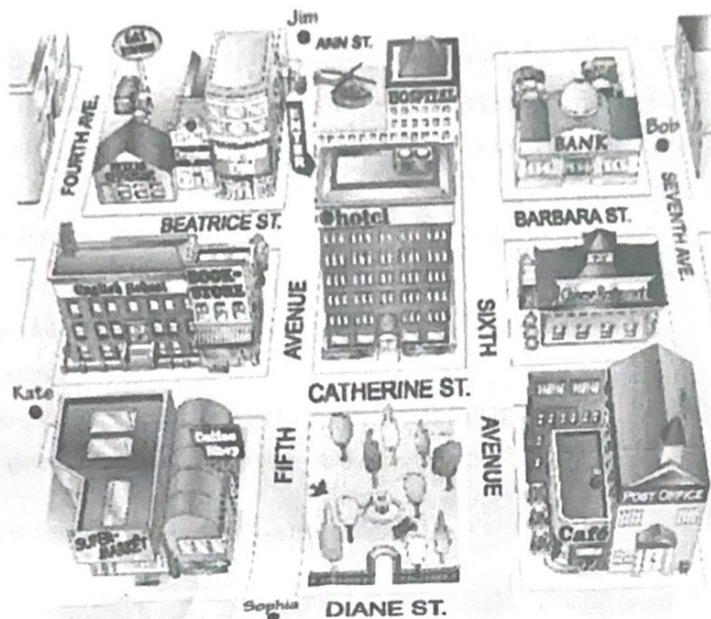


6

Look at the map. Give these people directions. Use the phrases and sentences in the box.

Walk up/Go up . . . Street/Avenue.
Turn left on . . . Street/Avenue.
Walk to . . . Street/Avenue.

Walk down/Go down . . . Street/Avenue.
Turn right on . . . Street/Avenue.
It's on the left/right.



1. Sophia is looking for the Mexican restaurant.

Go up Fifth Avenue. Turn left on Beatrice Street.
Walk to Fourth Avenue. It's on the right.

2. Kate is looking for the post office.

Go ahead Catherine street. Turn right sixth avenue. Walk
Turn left, it's on the Diane street

3. Bob is looking for the supermarket.

Go down seventh avenue Turn right on Catherine street.
Go ahead Catherine street and turn left on fifth avenue
turn right on Diane street. It's on the right.

4. Jim is looking for the bank.

Go down on Beatrice Street. Turn left on Barbara
Street. Walk on the Barbara street. It's on the left.

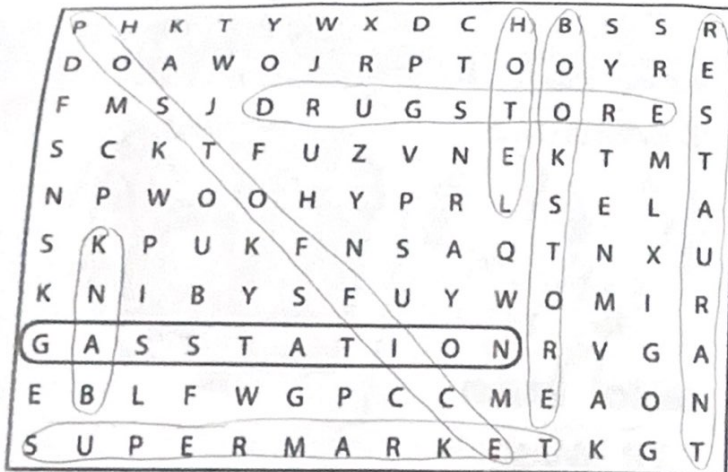
WORKBOOK

1 Places

A Complete these sentences with the correct places.
Write one letter on each line.

- We need gasoline for the car. Is there a g a s s t a t i o n near here?
- I'm going to go to the b a n k. I need some traveler's checks.
- I work at a b o o k s t o r e. I love books, so it's a great job.
- Are you going to the p o s t o f f i c e? I need some stamps.
- We don't have anything for dinner. Let's buy some food at the s u p e r m a r k e t.
- Tomorrow we're going to go to Paris for five days. We're going to stay at an expensive h o t e l.
- I have a stomachache. Can you buy some antacid at the d r u g s t o r e?
- Let's go out for lunch. There's a great Mexican r e s t a u r a n t downtown.

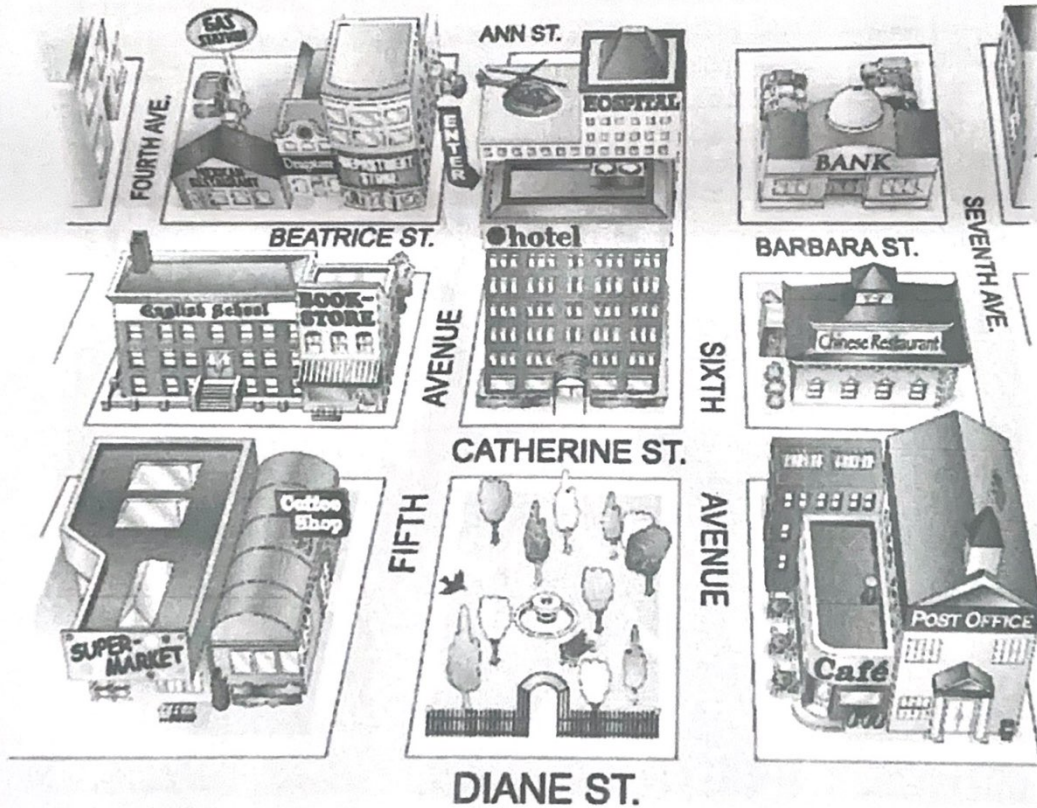
B Find and circle the places in part A in the puzzle.



2 Look at the map. Complete the sentences with the prepositions in the box.

- | | | |
|--------------------------------------|----------------------------------|---|
| <input type="checkbox"/> across from | <input type="checkbox"/> between | <input checked="" type="checkbox"/> on |
| <input type="checkbox"/> behind | <input type="checkbox"/> next to | <input type="checkbox"/> on the corner of |

- The English school is on Catherine Street.
- The hospital is between the hotel.
- The Mexican restaurant is across from Beatrice Street and Fourth Avenue.
- The bank is on Barbara Street, between Sixth and Seventh Avenues.
- The bookstore is next to the English school.
- The coffee shop is behind the park.

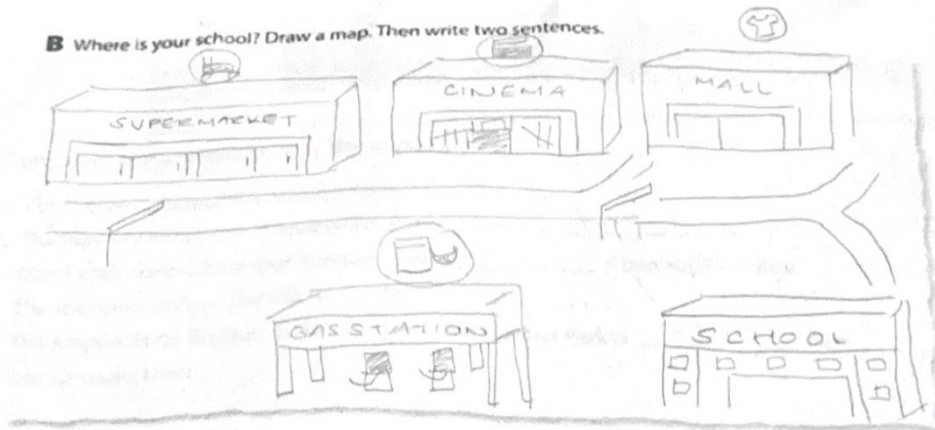


3 Where is it?

A Look at the map in Exercise 2 again. Where is each place? Write two sentences.

1. bookstore The bookstore is on the corner of Catherine Street and Fifth Avenue. It's next to the English school.
2. supermarket The supermarket is next to coffee shop and Diane St. It's on ... to the park.
3. department store The department store is behind book store and Beatrice St. It's next to the hotel.
4. gas station The gas station is on Fourth Ave and Beatrice St. It's behind drugstore.
5. Chinese restaurant The Chinese restaurant is across from Sixth Avenue and Baker St. It's behind the bank.
6. hotel The hotel is on Catherine St. and Fifth Avenue. It's on the corner of the coffee shop.
7. post office The post office is across from Sixth Avenue and Diane St. It's on the Diane Street.
8. drugstore The drugstore is between Fourth Avenue and Ann St. It's on next to the department store.

B Where is your school? Draw a map. Then write two sentences.



My school is next to gas station and across from mall.

4 Complete the conversation. Use the sentences and questions in the box.

- | | |
|--|---|
| <input checked="" type="checkbox"/> Next to the café? | <input checked="" type="checkbox"/> Excuse me. Can you help me? |
| <input type="checkbox"/> Is there a post office around here? | <input type="checkbox"/> Where on Diane Street? |
| <input checked="" type="checkbox"/> Thanks a lot. | |

Rachel: Excuse me. Can you help me?

Man: Sure.

Rachel: Is there a post office around here?

Man: Yes, there is. It's on Diane Street.

Rachel: Where on Diane street?

Man: It's on the corner of Diane Street and Seventh Avenue.

Rachel: Next to the cafe?

Man: Yes, that's right. It's right next to the café.

Rachel: Thanks a lot

Man: You're welcome.



5 Complete the sentences with the opposites.

1. Don't turn *right* on Fifth Avenue. Turn left.
2. The Waverly Hotel isn't *in front of* the concert hall. It's behind it.
3. Don't walk *down* Columbus Avenue. Walk up Columbus Avenue.
4. The museum isn't on the *left*. It's on the right.
5. The Empire State Building is *far from* here, but Central Park is near here. You can walk there.