

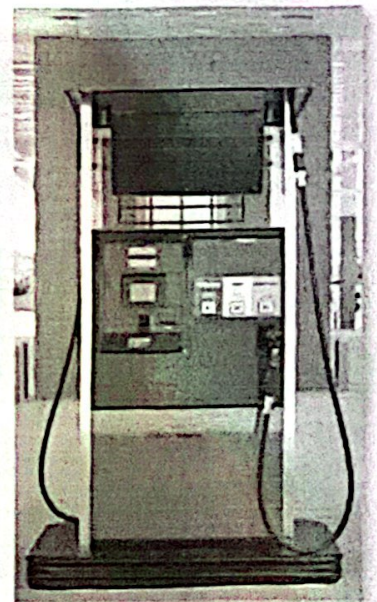
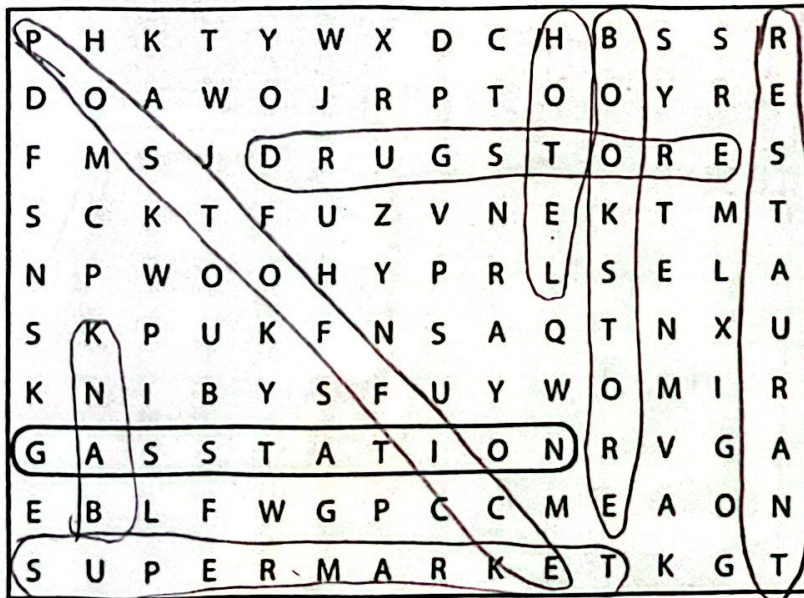
WORKBOOK

1 Places

A Complete these sentences with the correct places.
Write one letter on each line.

- We need gasoline for the car. Is there a g a s s t a t i o n near here?
- I'm going to go to the B a n k. I need some traveler's checks.
- I work at a b o o k s t o r e. I love books, so it's a great job.
- Are you going to the p o s t o f f i c e? I need some stamps.
- We don't have anything for dinner. Let's buy some food at the s u p e r m a r k e t.
- Tomorrow we're going to go to Paris for five days. We're going to stay at an expensive H o t e l.
- I have a stomachache. Can you buy some antacid at the d r u g s t o r e?
- Let's go out for lunch. There's a great Mexican r e s t a u r a n t downtown.

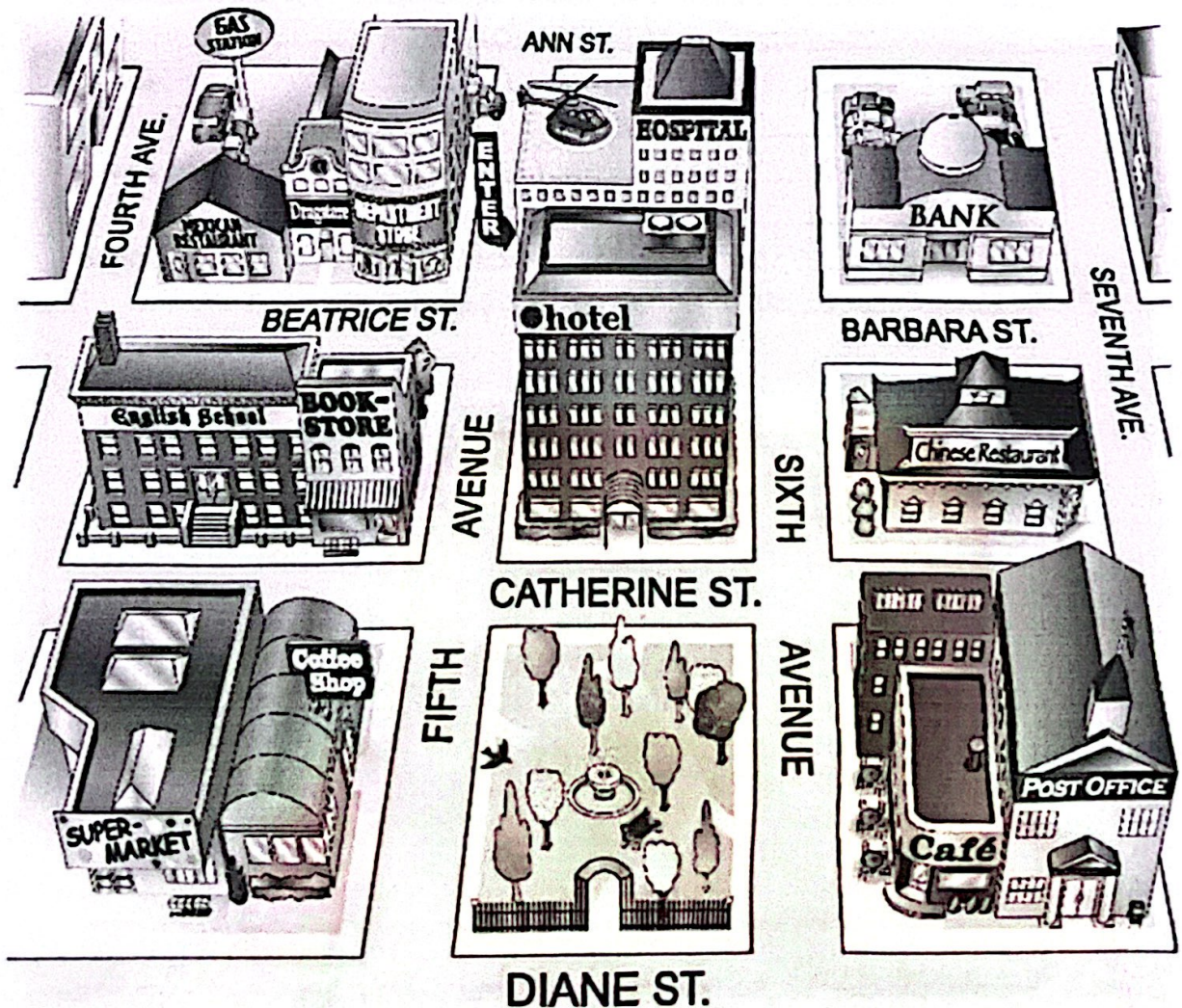
B Find and circle the places in part A in the puzzle.



2 Look at the map. Complete the sentences with the prepositions in the box.

- | | | |
|--------------------------------------|----------------------------------|---|
| <input type="checkbox"/> across from | <input type="checkbox"/> between | <input checked="" type="checkbox"/> on |
| <input type="checkbox"/> behind | <input type="checkbox"/> next to | <input type="checkbox"/> on the corner of |

- The English school is on Catherine Street.
- The hospital is behind the hotel.
- The Mexican restaurant is The corner off Fourth Ave. Beatrice Street and Fourth Avenue.
- The bank is on Barbara Street, between Sixth and Seventh Avenues.
- The bookstore is next to the English school.
- The coffee shop is across from the park.

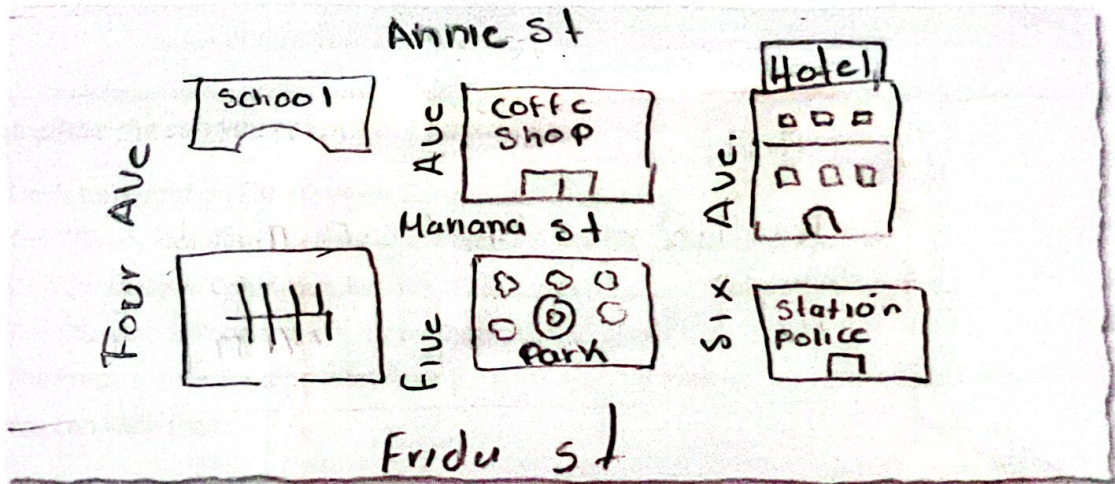


3 Where is it?

A Look at the map in Exercise 2 again. Where is each place? Write two sentences.

- 1. bookstore The bookstore is on the corner of Catherine Street and Fifth Avenue. It's next to the English school.
- 2. supermarket supermarket is next to coffee shop on Diane st
- 3. department store Department store is on the corner of Beatrice st. and next to drugstore
- 4. gas station gas station behind Mexican restaurant, on fourth ave.
- 5. Chinese restaurant Chinese restaurant is on Catherine st. and sixth Avenue
- 6. hotel Hotel is on Catherine across from park
- 7. post office post office is next to cafe on Diane st
- 8. drugstore drugstore is between Mexican rest. and Department store on beatrice st

B Where is your school? Draw a map. Then write two sentences.



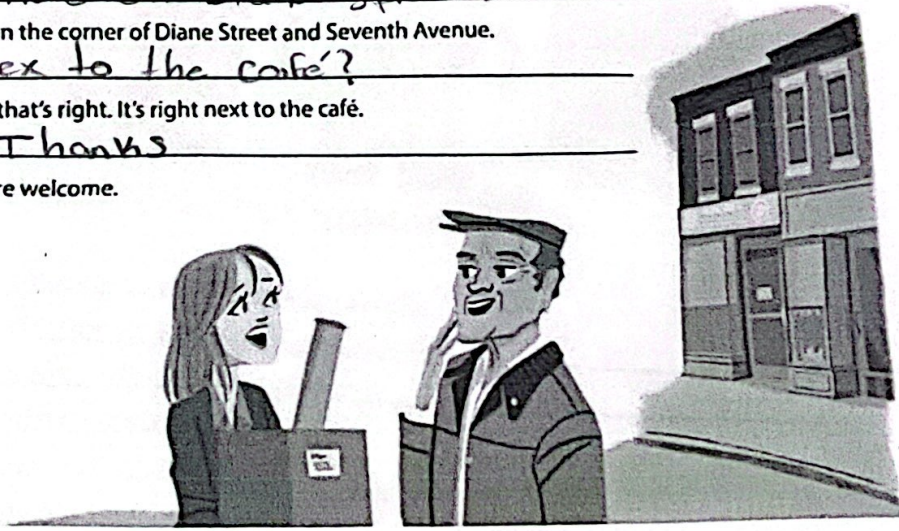
school is on mariana st. and four Ave.
School is on four Ave. and Annie st

6 Look at the map. Give these people directions.

4 Complete the conversation. Use the sentences and questions in the box.

- | | |
|--|---|
| <input type="checkbox"/> Next to the café? | <input checked="" type="checkbox"/> Excuse me. Can you help me? |
| <input type="checkbox"/> Is there a post office around here? | <input type="checkbox"/> Where on Diane Street? |
| <input type="checkbox"/> Thanks a lot. | |

Rachel: Excuse me. Can you help me?
 Man: Sure.
 Rachel: Is there a post office
 Man: Yes, there is. It's on Diane Street.
 Rachel: Where on Diane Street?
 Man: It's on the corner of Diane Street and Seventh Avenue.
 Rachel: Next to the café?
 Man: Yes, that's right. It's right next to the café.
 Rachel: Thanks
 Man: You're welcome.



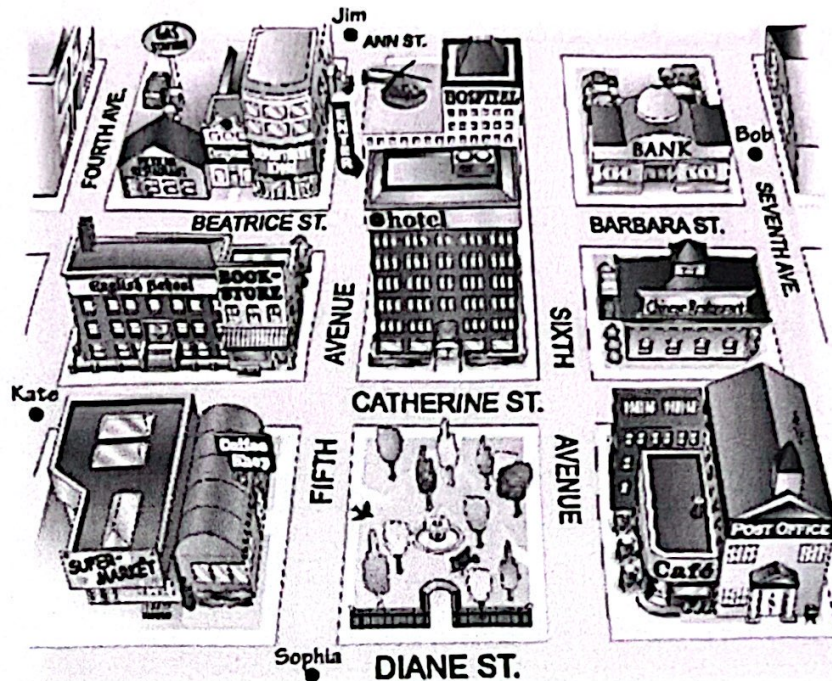
5 Complete the sentences with the opposites.

1. Don't turn *right* on Fifth Avenue. Turn left.
2. The Waverly Hotel isn't *in front of* the concert hall. It's behind it.
3. Don't walk *down* Columbus Avenue. Walk up Columbus Avenue.
4. The museum isn't on the *left*. It's on the right.
5. The Empire State Building is *far* from here, but Central Park is near here.
You can walk there.

6 Look at the map. Give these people directions. Use the phrases and sentences in the box.

Walk up/Go up . . . Street/Avenue.
 Turn left on . . . Street/Avenue.
 Walk to . . . Street/Avenue.

Walk down/Go down . . . Street/Avenue.
 Turn right on . . . Street/Avenue.
 It's on the left/right.



1. Sophia is looking for the Mexican restaurant.

Go up Fifth Avenue. Turn left on Beatrice Street.

Walk to Fourth Avenue. It's on the right.

2. Kate is looking for the post office.

walk up catherine st. turn right on sixth Ave.

walk down turn left on Diane st. it's on the left

3. Bob is looking for the supermarket.

walk down, turn right on Diane st. walk
down, walk to four Ave. it's on the right

4. Jim is looking for the bank.

walk down, turn left on beatrice st. and
barbara st. walk to seventh Ave. it's on the left