

**María José Figueroa
solorzano**

Recursos humanos

Rafael Iván guillen



Look at the map. Complete the sentences with the prepositions in the box.

- | | | |
|--------------------------------------|----------------------------------|---|
| <input type="checkbox"/> across from | <input type="checkbox"/> between | <input checked="" type="checkbox"/> on |
| <input type="checkbox"/> behind | <input type="checkbox"/> next to | <input type="checkbox"/> on the corner of |

- The English school is on Catherine Street.
- The hospital is Next to the hotel.
- The Mexican restaurant is On the corner of Beatrice Street and Fourth Avenue.
- The bank is on Barbara Street, In front Sixth and Seventh Avenues.
- The bookstore is On-next to the English school.
- The coffee shop is Between-on the park.



WORKBOOK

1**Places**

- A** Complete these sentences with the correct places.
Write one letter on each line.

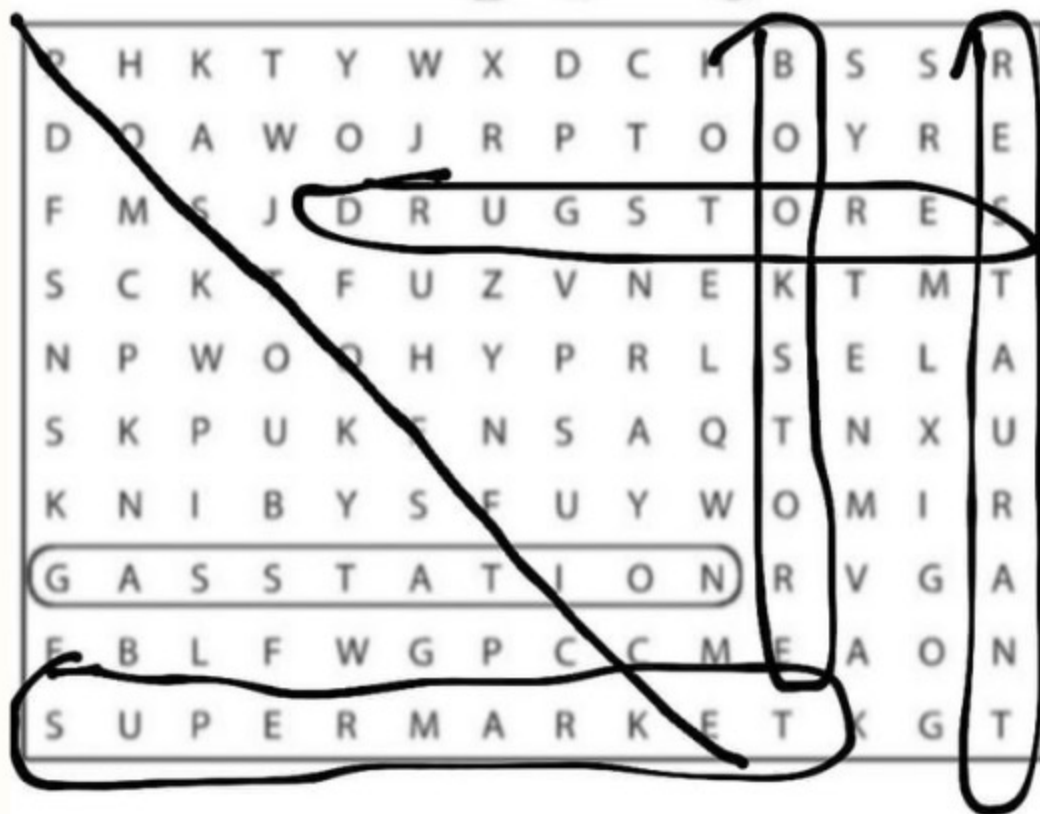
- We need gasoline for the car. Is there a
g a s s t a t i o n near here?
- I'm going to go to the Bank. I need some traveler's checks.
- I work at a Book store. I love books, so it's a great job.
- Are you going to the Post office? I need some stamps.
- We don't have anything for dinner. Let's buy some food at the
Super market.
- Tomorrow we're going to go to Paris for five days. We're going to stay
at an expensive Hotel.
- I have a stomachache. Can you buy some antacid at the Drugs store?
- Let's go out for lunch. There's a great Mexican Restaurant downtown.

- B** Find and circle the places in part A in the puzzle.



8. Let's go out for lunch. There's a great Mexican _____ *Resto*

B Find and circle the places in part A in the puzzle.



Walk to . . . Street/Avenue.

It's on the left/right.



1. Sophia is looking for the Mexican restaurant.

Go up Fifth Avenue. Turn left on Beatrice Street.

Walk to Fourth Avenue. It's on the right.

2. Kate is looking for the post office.

No, don't right turn left on
Main Street

3. Bob is looking for the supermarket.

No, don't go down go up

4. Jim is looking for the bank.

No, don't it's on the right