

Universidad del Sureste



Ing. Arregla Jimenez Eduardo Enrique

López Bautista Joseph Alexis

Licenciatura en Nutrición

2do Cuatrimestre

Inglés II

Workbook

Tapachula, Chiapas 04 de abril de 2024

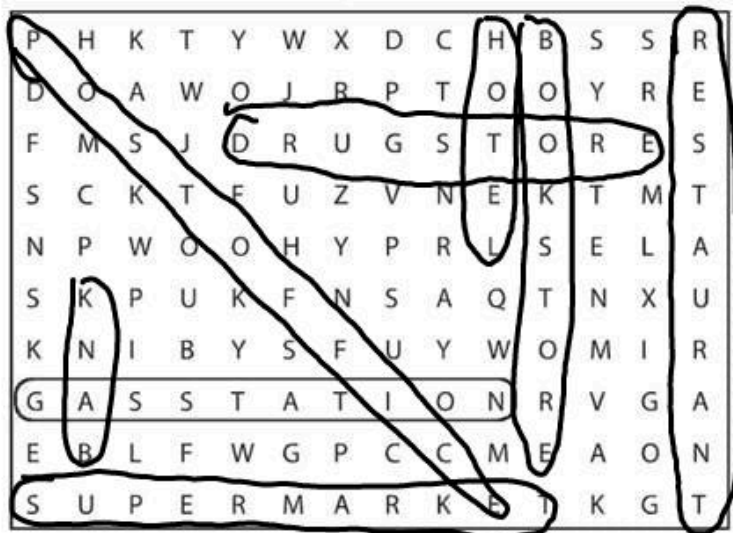
WORKBOOK

1 Places

A Complete these sentences with the correct places.
Write one letter on each line.

- We need gasoline for the car. Is there a gas station near here?
- I'm going to go to the bank. I need some traveler's checks.
- I work at a bookstore. I love books, so it's a great job.
- Are you going to the post office? I need some stamps.
- We don't have anything for dinner. Let's buy some food at the supermarket.
- Tomorrow we're going to go to Paris for five days. We're going to stay at an expensive Hotel.
- I have a stomachache. Can you buy some antacid at the drugstore?
- Let's go out for lunch. There's a great Mexican Restaurant downtown.

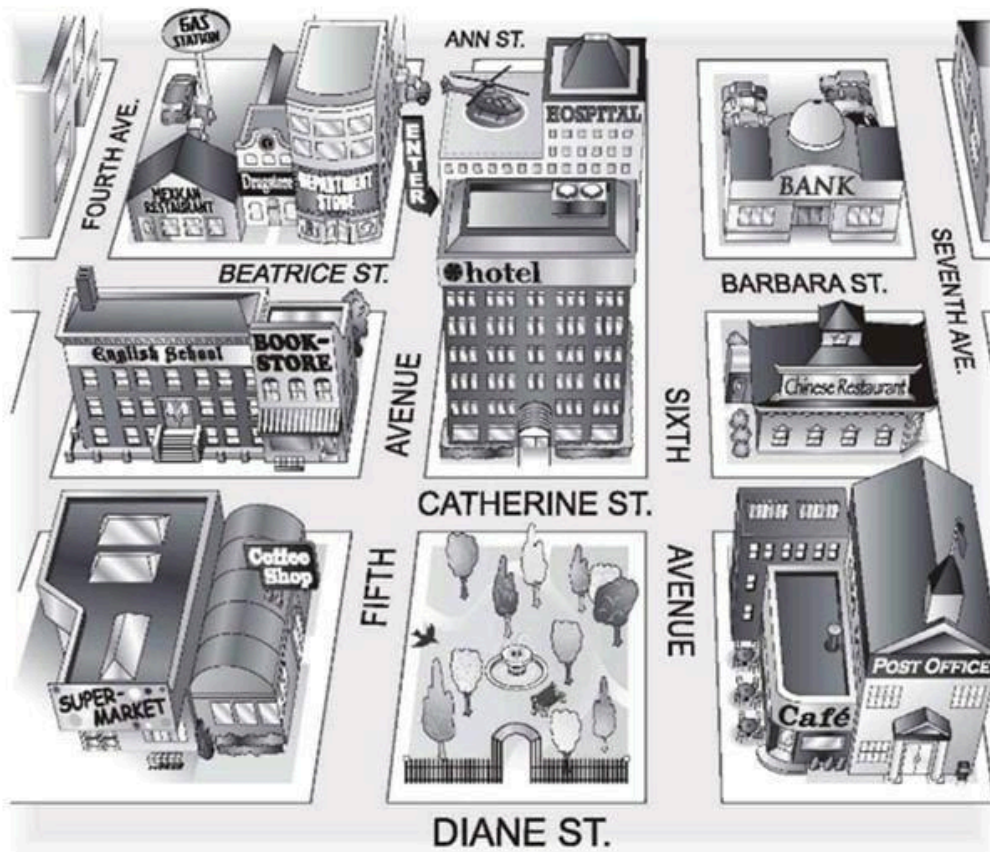
B Find and circle the places in part A in the puzzle.



2 Look at the map. Complete the sentences with the prepositions in the box.

- | | | |
|--------------------------------------|----------------------------------|---|
| <input type="checkbox"/> across from | <input type="checkbox"/> between | <input checked="" type="checkbox"/> on |
| <input type="checkbox"/> behind | <input type="checkbox"/> next to | <input type="checkbox"/> on the corner of |

- The English school is on Catherine Street.
- The hospital is behind the hotel.
- The Mexican restaurant is on the corner of Beatrice Street and Fourth Avenue.
- The bank is on Barbara Street, between Sixth and Seventh Avenues.
- The bookstore is next to the English school.
- The coffee shop is across from the park.

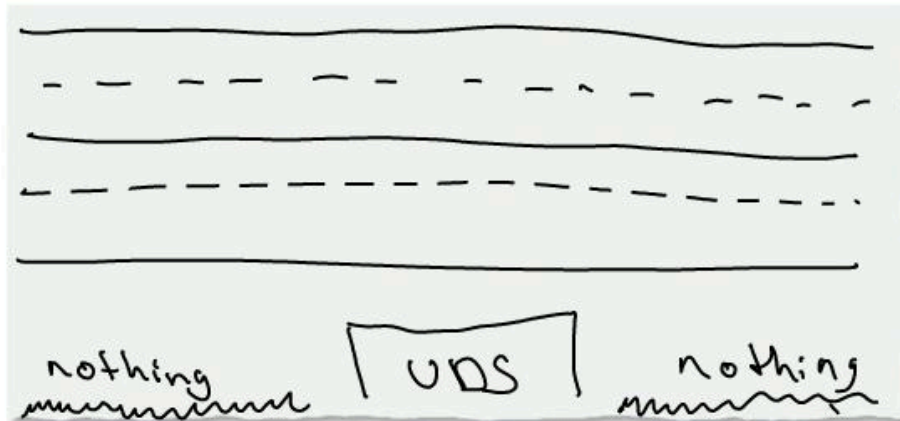


3 Where is it?

A Look at the map in Exercise 2 again. Where is each place? Write two sentences.

- 1. bookstore The bookstore is on the corner of Catherine Street and Fifth Avenue. It's next to the English school.
- 2. supermarket The supermarket is on the corner of Diane st. between 4th and 5th av. next to the coffee shop
- 3. department store Dep. store is on the corner of beatrice and 5th ave, next to the drugstore
- 4. gas station Gas station is on 4th ave behind Mex'can restaurant
- 5. Chinese restaurant Chinese restaurant is on the corner of barbara st. between 6th and 7th
- 6. hotel The hotel is between 5th and 6th ave in front of the hospital
- 7. post office The post office is between 6th and 7th ave next to the cafe on catherine st.
- 8. drugstore The drugstore is between mex restaurant and the dep. store on beatrice st

B Where is your school? Draw a map. Then write two sentences.



- 1. My school is on carretera puerto maduro
- 2. My school is in the middle of nothing

↑

4 Complete the conversation. Use the sentences and questions in the box.

- | | |
|---|---|
| <input checked="" type="checkbox"/> Next to the café? | <input checked="" type="checkbox"/> Excuse me. Can you help me? |
| <input checked="" type="checkbox"/> Is there a post office around here? | <input checked="" type="checkbox"/> Where on Diane Street? |
| <input checked="" type="checkbox"/> Thanks a lot. | |

Rachel: Excuse me. Can you help me?

Man: Sure.

Rachel: Is there a post office around here?

Man: Yes, there is. It's on Diane Street.

Rachel: Where on Diane street?

Man: It's on the corner of Diane Street and Seventh Avenue.

Rachel: Next to the cafe?

Man: Yes, that's right. It's right next to the café.

Rachel: Thanks a lot.

Man: You're welcome.

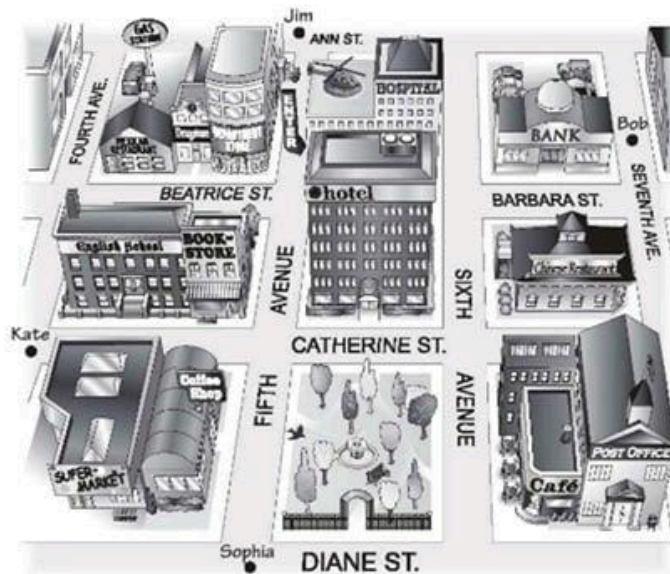


5 Complete the sentences with the opposites.

1. Don't turn *right* on Fifth Avenue. Turn left.
2. The Waverly Hotel isn't *in front of* the concert hall. It's behind it.
3. Don't walk *down* Columbus Avenue. Walk up Columbus Avenue.
4. The museum isn't on the *left*. It's on the right.
5. The Empire State Building is *far* from here, but Central Park is near here. You can walk there.

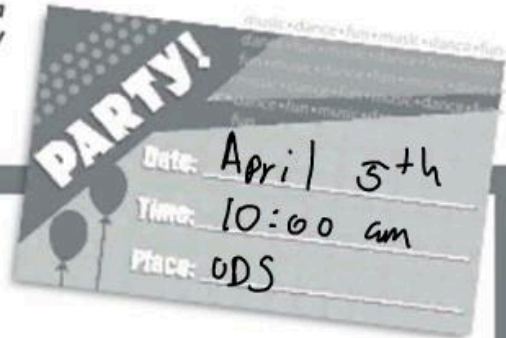
6 Look at the map. Give these people directions. Use the phrases and sentences in the box.

Walk up/Go up . . . Street/Avenue.	Walk down/Go down . . . Street/Avenue.
Turn left on . . . Street/Avenue.	Turn right on . . . Street/Avenue.
Walk to . . . Street/Avenue.	It's on the left/right.



- Sophia is looking for the Mexican restaurant.
Go up Fifth Avenue. Turn left on Beatrice Street.
Walk to Fourth Avenue. It's on the right.
- Kate is looking for the post office.
Go on Catherine st. and turn right for sixth ave
then turn left on Diane st, It's next to the cafe
- Bob is looking for the supermarket.
Go down for the 7th ave and turn right on
Diane st and continue until 4th ave, It's on the corner
- Jim is looking for the bank.
Go down for 5th ave. and turn left to sixth
its on your left between sixth and seventh

7 Imagine you're going to have a party. Complete the invitation. Then draw a map and write directions to the party from your school.



Map to the party

Directions to the party

~~Start in sams, go on the street~~ Start in sams, go on the street ~~carretera~~ ~~puer to madero~~ ~~for around~~ of 10 minutes and on your right is UDS