



**WORKBOOK UNIDAD 4 “YOU CAN’T MISS IT!”**

GARCIA ROBLES XIMENA CAROLINA

ARREOLA JIMENEZ ENRIQUE EDUARDO

UNIVERSIDAD DEL SURESTE

Licenciatura en Nutrición

ingles II

Tapachula, Chiapas

06 de abril de 2024

WORKBOOK

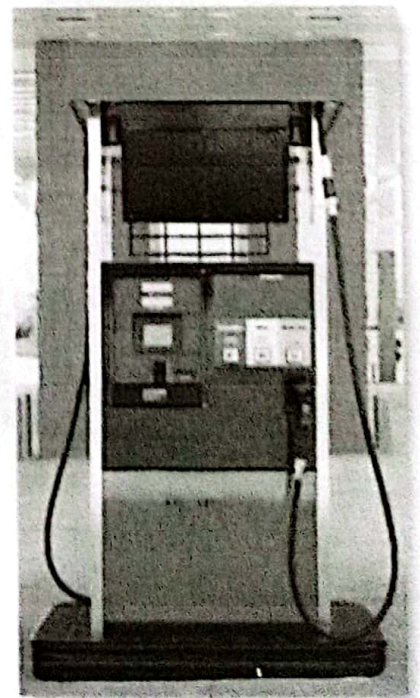
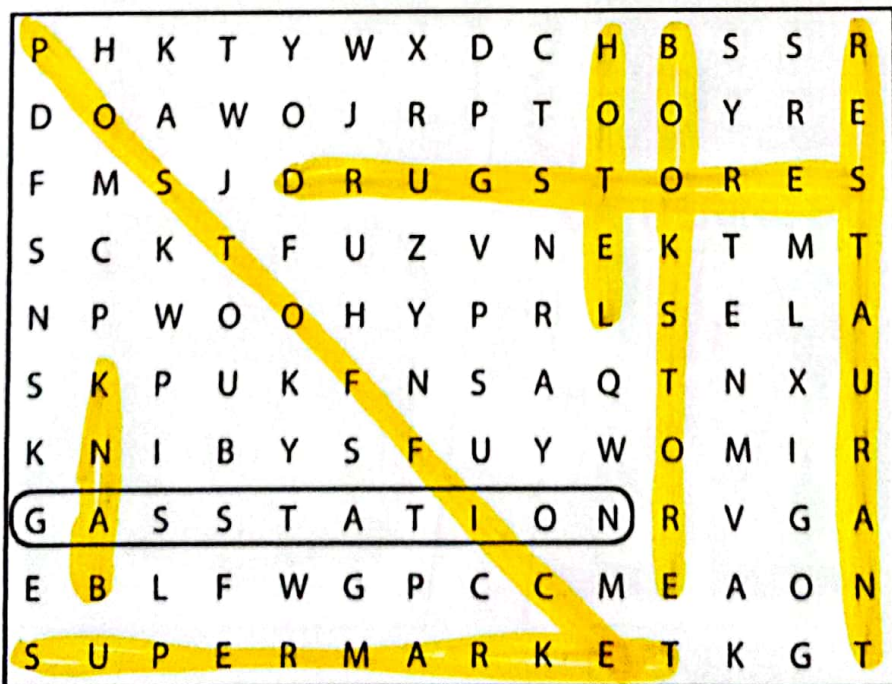
1

Places

**A** Complete these sentences with the correct places.  
Write one letter on each line.

- We need gasoline for the car. Is there a g a s s t a t i o n near here?
- I'm going to go to the B a n k. I need some traveler's checks.
- I work at a b o o k s t o r e. I love books, so it's a great job.
- Are you going to the p o s t o f f i c e? I need some stamps.
- We don't have anything for dinner. Let's buy some food at the s u p e r m a r k e t.
- Tomorrow we're going to go to Paris for five days. We're going to stay at an expensive h o t e l.
- I have a stomachache. Can you buy some antacid at the D r u g s t o r e?
- Let's go out for lunch. There's a great Mexican r e s t a u r a n t downtown.

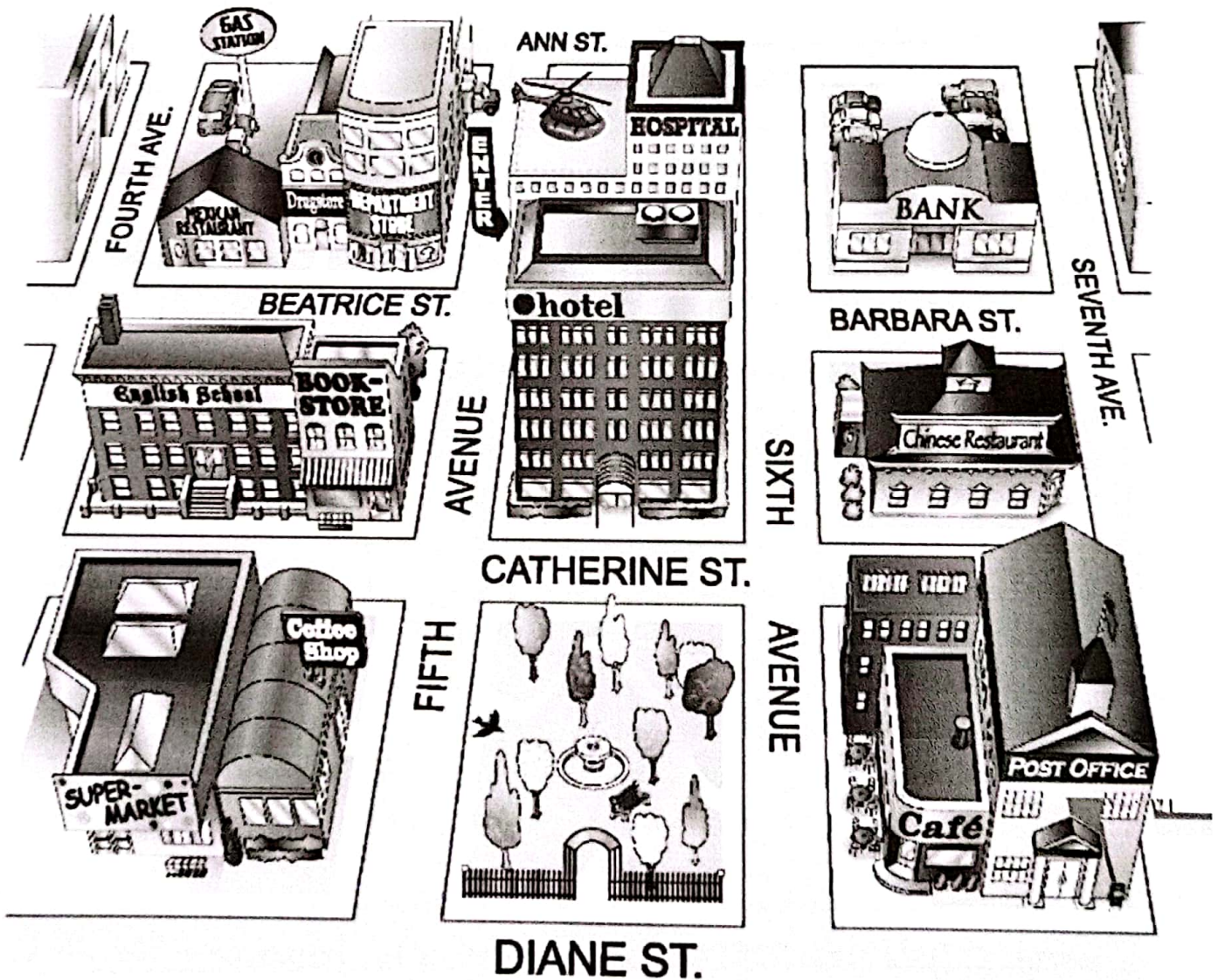
**B** Find and circle the places in part A in the puzzle.



**2** Look at the map. Complete the sentences with the prepositions in the box.

- |                                      |                                  |   |
|--------------------------------------|----------------------------------|---|
| <input type="checkbox"/> across from | <input type="checkbox"/> between | <input checked="" type="checkbox"/> on    |
| <input type="checkbox"/> behind      | <input type="checkbox"/> next to | <input type="checkbox"/> on the corner of |

- The English school is on Catherine Street.
- The hospital is behind the hotel.
- The Mexican restaurant is on the corner of Beatrice Street and Fourth Avenue.
- The bank is on Barbara Street, between Sixth and Seventh Avenues.
- The bookstore is next to the English school.
- The coffee shop is next to the park.

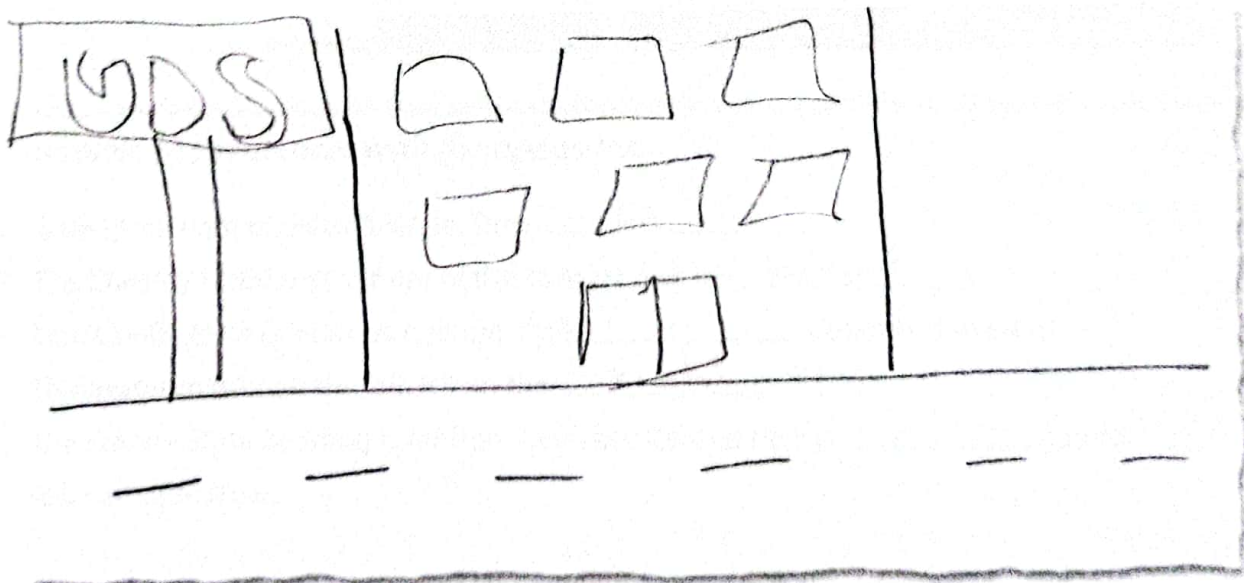


**3** Where is it?

**A** Look at the map in Exercise 2 again. Where is each place? Write two sentences.

- 1. bookstore The bookstore is on the corner of Catherine Street and Fifth Avenue. It's next to the English school.
- 2. supermarket The super market is next to the coffeshop. The supermaket is on Diane street.
- 3. department store And Frcth avenue it's behind the bookstore.
- 4. gas station The gas station is on furth Avenue. It's behind the Mexrcan restaurant. The gas statron is Foort avenue.
- 5. Chinese restaurant Sixthand seventh avenue the chinese restaurant is on catherine street.
- 6. hotel The hotel is on the caner of catherneest. The hotel is across from the park.
- 7. post office post office is next to the cafe. Post office is between seventhave and sixth
- 8. drugstore The department is between the Mexrcan Rest. a. The departament store - it's behind the english

**B** Where is your school? Draw a map. Then write two sentences.

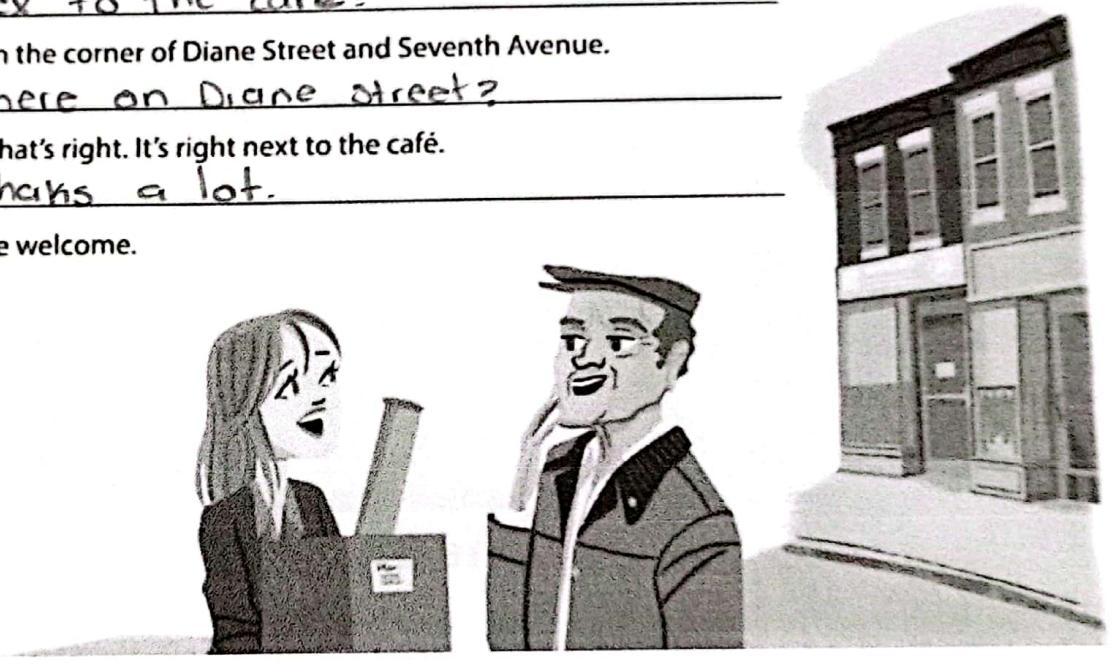


My school is en puerto madero High way

**4** Complete the conversation. Use the sentences and questions in the box.

- |  |   |
|--|---|
| <input type="checkbox"/> Next to the café?                   | <input checked="" type="checkbox"/> Excuse me. Can you help me? |
| <input type="checkbox"/> Is there a post office around here? | <input type="checkbox"/> Where on Diane Street?                 |
| <input type="checkbox"/> Thanks a lot.                       |   |

Rachel: Excuse me. Can you help me?  
 Man: Sure.  
 Rachel: Is there a post office around here?  
 Man: Yes, there is. It's on Diane Street.  
 Rachel: Next to the café?  
 Man: It's on the corner of Diane Street and Seventh Avenue.  
 Rachel: Where on Diane Street?  
 Man: Yes, that's right. It's right next to the café.  
 Rachel: Thanks a lot.  
 Man: You're welcome.

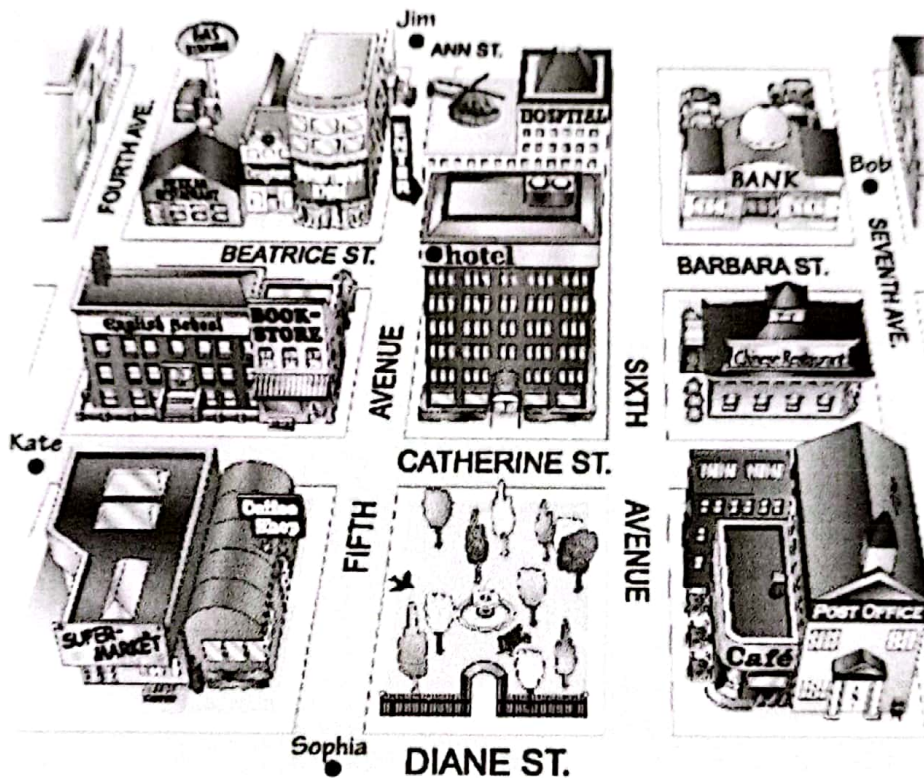


**5** Complete the sentences with the opposites.

1. Don't turn *right* on Fifth Avenue. Turn left.
2. The Waverly Hotel isn't *in front of* the concert hall. It's behind it.
3. Don't walk *down* Columbus Avenue. Walk \_\_\_\_\_ Columbus Avenue.
4. The museum isn't on the *left*. It's on the right.
5. The Empire State Building is *far* from here, but Central Park is \_\_\_\_\_ here.  
You can walk there.

6 Look at the map. Give these people directions. Use the phrases and sentences in the box.

Walk up/Go up . . . Street/Avenue.  
 Turn left on . . . Street/Avenue.  
 Walk to . . . Street/Avenue.  
 Walk down/Go down . . . Street/Avenue.  
 Turn right on . . . Street/Avenue.  
 It's on the left/right.



1. Sophia is looking for the Mexican restaurant.

Go up Fifth Avenue. Turn left on Beatrice Street.

Walk to Fourth Avenue. It's on the right.

2. Kate is looking for the post office.

walk on catherine steel turn right on sixth avenue.  
turn left on Diane street. It's next to

3. Bob is looking for the supermarket.

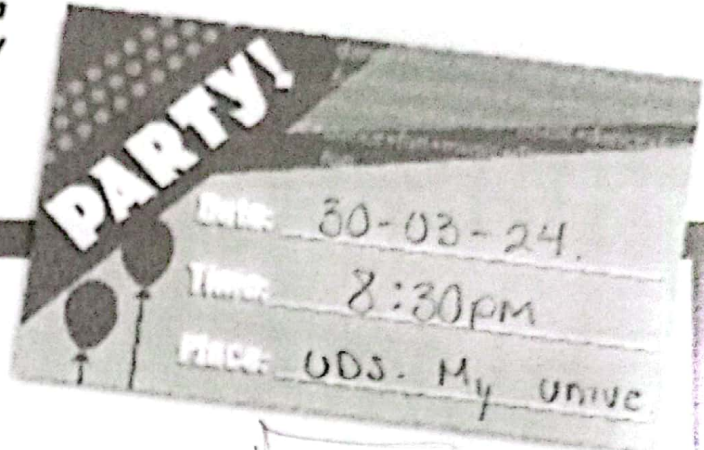
walk the entire left side of seventh ave to  
the post office turn left onto Diane st

4. Jim is looking for the bank.

walk downn Fifth Avenue. turn left on Beatrice  
street walk the sixth avenue. It's on the  
conc of burburastreet.



Imagine you're going to have a party. Complete the invitation. Then draw a map and write directions to the party from your school.



**Map to the party**



**Directions to the party**

Start at the school. Then Follow the entire road until the bypass, the turn right onto a parvial avenue and continue straight until you reach a church.