



WHERE ARE YOU FROM?

Nombre del Alumno: David Alejandro
Vázquez Morales

Cuatrimestre: Primer cuatrimestre

Carrera: Contabilidad pública y finanzas

Nombre del profesor: Georgina Olivia Vidal
Alfonzo

Materia: Inglés 1

Fecha: 05/ 12 /2023

UNIT II. WHERE ARE YOU FROM?

2.1.- Cities and Countries

1 **SNAPSHOT**

🎧 Listen and practice.

The Ten Largest Cities in the World

(based on population in the metropolitan area)

Cities	Countries
1. Tokyo	a. Brazil
2. Seoul	b. China
3. Mexico City	c. India
4. New York City	d. Indonesia
5. Mumbai	e. Japan
6. Jakarta	f. Mexico
7. São Paulo	g. South Korea
8. Delhi	h. the U.S.
9. Osaka	
10. Shanghai	

Answers: 1.e, 2.g, 3.f, 4.h, 5.c, 6.d, 7.a, 8.c, 9.e, 10.b

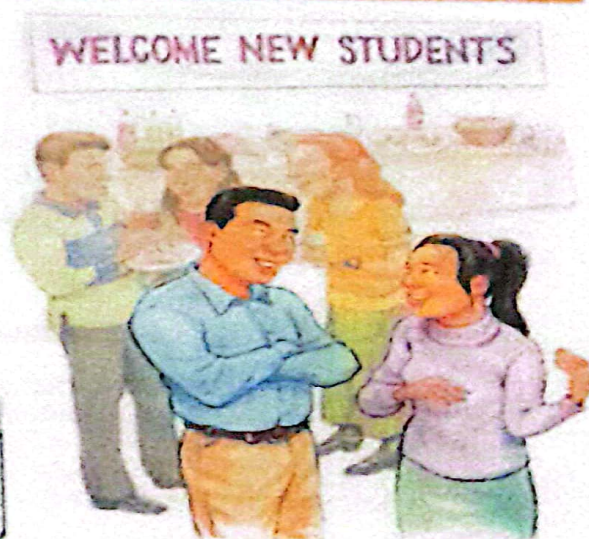
Source: www.worldatlas.com

Match the cities with the countries. Then check your answers at the bottom of the Snapshot. What other large cities are in each country? What large cities are in your country?

2 **CONVERSATION** Are you from Seoul?

A 🎧 Listen and practice.

Tim: Are you from California, Jessica?
 Jessica: Well, my family is in California now, but we're from South Korea originally.
 Tim: Oh, my mother is Korean - from Seoul! Are you from Seoul?
 Jessica: No, we're not. We're from Daejeon.
 Tim: So is your first language Korean?
 Jessica: Yes, it is.



B 🎧 Listen to Jessica and Tim talk to Tony, Natasha, and Monique. Check (✓) True or False.

	True	False
1. Tony is from Italy.	<input checked="" type="checkbox"/>	<input type="checkbox"/>
2. Natasha is from New York.	<input type="checkbox"/>	<input checked="" type="checkbox"/>
3. Monique's first language is English.	<input checked="" type="checkbox"/>	<input type="checkbox"/>

2 Wh-questions with be

- ▶ Use *what* to ask about things. Use *where* to ask about places. Use *Who* to ask about people. Use *What... like?* to ask for a description.
- ▶ Use *how* to ask for a description: **How** are you today? Use *How old* to ask about age: **How old** is he?
- ▶ In answers about age, you can use only the number or the number + *years old*: **He's 18.** OR **He's 18 years old.**

Complete the questions with *how, what, where, or who*. Then match the questions with the answers.

1. Who is that? d
2. what is her name? c
3. what is she like? f
4. who old is she? b
5. where is your family from? a
6. how is Bangkok like? e

- a. We're from Thailand – from Bangkok
- b. She's 16.
- c. Her name is Nittaya.
- d. She's my sister.
- e. It's really beautiful.
- f. She's a little shy.

WORD POWER Descriptions

A Listen and practice.

a. pretty
 b. handsome
 c. good-looking
 d. talkative
 e. quiet
 f. funny
 g. serious
 h. shy
 i. short
 j. tall
 k. friendly
 l. heavy
 m. thin

2.4.- Wh-questions with be

Wh-questions with be

What's your name?

My name is Jill.

Where are you from?

I'm from Canada.

How are you today?

I'm just fine.

Who's that?

He's my brother.

How old is he?

He's twenty-one.

What's he like?

He's very nice.

Who's = Who is

Who are they?

They're my classmates.

Where are they from?

They're from Rio.

What's Rio like?

It's very beautiful.

A Complete the conversations with Wh-questions. Then practice with a partner.

- A: Look! Who's that ?

B: Oh, he's a new student.

A: What's his name ?

B: I think his name is Ming.

A: Ming? Where is she from ?

B: He's from China.
- A: Serhat, where are you from ?

B: I'm from Turkey - from Istanbul.

A: What's Istanbul like ?

B: Istanbul is very old and beautiful.

A: What's your last name ?

B: My last name is Erdogan.
- A: Hi, John. What's she like ?

B: I'm just fine. My friend Teresa is here this week - from Argentina.

A: Oh, cool. How is she ?

B: She's really friendly.

A: How old is she ?

B: She's twenty-eight years old.



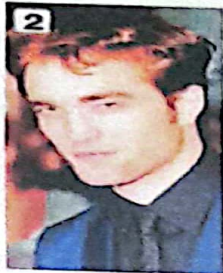
2.2.- Where are they from?

WHERE ARE THEY FROM?

A Where are these people from? Check (✓) your guesses.



- Penelope Cruz**
- Mexico
 - France
 - Spain



- Robert Pattinson**
- the U.S.
 - the U.K.
 - Canada



- Haru Nomura**
- South Korea
 - Japan
 - China



- Cate Blanchett**
- Australia
 - New Zealand
 - South Africa



- Javier Hernández**
- Brazil
 - Mexico
 - Chile

B PAIR WORK Compare your guesses. Then check your answers at the bottom of the page.

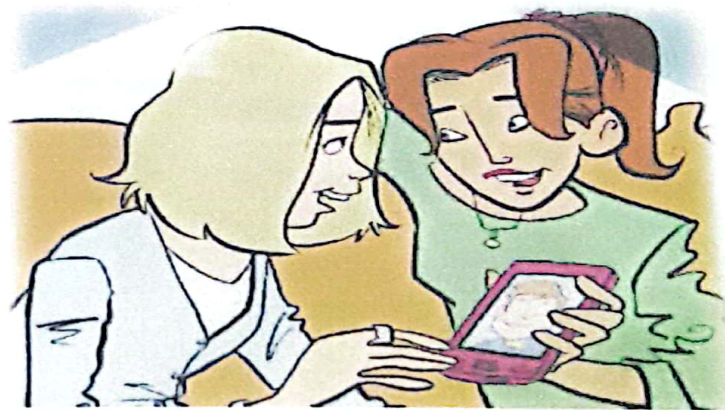
- A: Is Penelope Cruz from Mexico?
 B: No, she's not.
 A: Is she from France?

Answers: 1. Spain 2. the U.K. 3. Japan 4. Australia 5. Mexico

CONVERSATION *He's cute.*

🎧 Listen and practice.

- Emma: Who's that?
 Jill: He's my brother.
 Emma: Wow! He's cute. What's his name?
 Jill: James. We call him Jim.
 Emma: Oh, how old is he?
 Jill: He's twenty-one years old.
 Emma: What's he like? Is he nice?
 Jill: Yes, he is – and he's very smart, too!
 Emma: And who's that?
 Jill: My sister Tammy. She's only twelve. She's the baby of the family.



1 Negative statements and yes/no questions with be

- ▶ Use *be* + *not* to form negative statements: Ana **isn't** a student. (NOT: Ana ~~is~~ no a student.)
- ▶ You is a singular and a plural pronoun: Are **you** from Rio? Yes, I am./Yes, we are

A Unscramble the words to write negative statements.

1. in California / not / New York City / is
New York City is not in California.
2. London / not / from / we're
We're not from London?
3. not / you and Tim / in my class / are
Tim and you are not in my class?
4. is / my first language / Spanish / not
Spanish is not my first language.
5. from / my mother / not / is / Seoul
My mother is not from Seoul.
6. my keys / not / are / they
They are not my keys.

B Complete the conversations.

1. A: Are you and your family from Mexico?
B: No, we're not. We're from Guatemala.
2. A: Is your first language English?
B: Yes, it is. My parents are from Australia.
3. A: Are Kenji and his friend Japanese?
B: Yes, they are. But they are in the U.S. now.
4. A: Are we my mother and I late?
B: No, we're not. We're early!

2.2.- Negative and Questions with be

Negative statements and yes/no questions with be

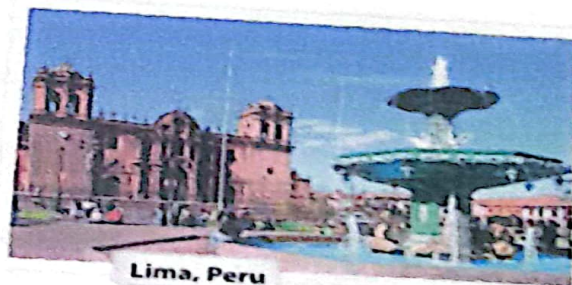
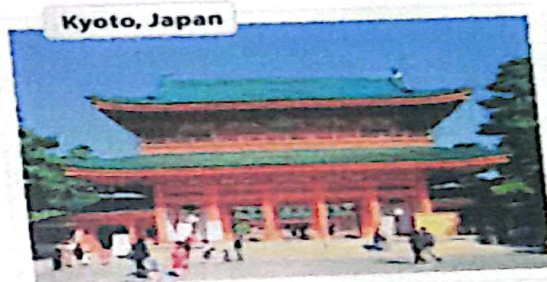
I'm **not** from New York.
 You're **not** late.
 She's **not** from Russia.
 He's **not** from Italy.
 It's **not** English.
 We're **not** from Japan.
 You're **not** early.
 They're **not** in Mexico.
 We're = We are

Are **you** from California?
 Am **I** early?
 Is **she** from Brazil?
 Is **he** from Chile?
 Is **it** Korean?
 Are **you** from China?
 Are **we** late?
 Are **they** in Canada?

	I am.	I'm	not.
	you are.	you're	not.
	she is.	she's	not.
Yes,	he is.	No,	he's
	it is.		not.
	we are.		it's
	you are.		we're
	they are.		you're
			not.
			they're
			not.

A Complete the conversations. Then practice with a partner.

- A: Hiroshi, are you and Maiko from Japan?
 B: Yes, we are.
 A: Oh? are you from Tokyo?
 B: No, we are not. we are from Kyoto.
- A: is Laura from the U.S.?
 B: No, she is not. She's from the U.K.
 A: is she from London?
 B: Yes, she is. But her parents are from Italy. they are not from the U.K. originally.
 A: she is not Laura's first language Italian?
 B: No, it is not. it is English.
- A: are they Selina and Carlos from Mexico?
 B: No, are not. they are from Brazil.
 A: are you from Brazil, too?
 B: No, I am not. I'm from Peru.
 A: So, is your first language Spanish?
 B: Yes, it is.



B Match the questions with the answers. Then practice with a partner.

- | | |
|--|---|
| 1. Are you and your family from Canada? <u>a</u> | a. No, he's not. He's from Singapore. |
| 2. Is your first language English? <u>c</u> | b. Yes, she is. She's from California. |
| 3. Are you Japanese? <u>e</u> | c. No, it's not. It's Japanese. |
| 4. Is Mr. Ho from Hong Kong? <u>a</u> | d. No, we're not. We're from Australia. |
| 5. Is your mother from the U.S.? <u>b</u> | e. Yes, we are. We're from Kyoto. |

C PAIR WORK Write five questions like the ones in part B. Then ask and answer your questions with a partner.