



# UDSA

## Mi Universidad

*Nombre del Alumno: Blanca Maribel Lopez Jiménez*

*Nombre del tema: WHERE ARE YOU FROM?*

*Parcial: primero*

*Nombre de la Materia: ingles 1*

*Nombre del profesor: GEORGINA OLIVIA VIDAL ALFONSO*

*Nombre de la Licenciatura: Administración y estrategias de negocios.*

*Cuatrimestre: primer cuatrimestre.*

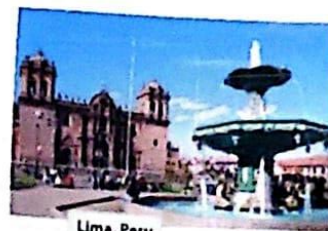
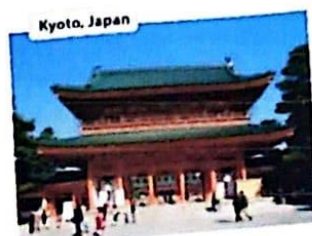
## 2.2.- Negative and Questions with be

### Negative statements and yes/no questions with be

I'm <b>not</b> from New York.	<b>Are you</b> from California?	I <b>am</b>	I'm <b>not</b>
<b>You're not</b> late	<b>Am I</b> early?	<b>you are</b>	<b>you're not</b>
<b>She's not</b> from Russia	<b>Is she</b> from Brazil?	<b>she is</b>	<b>she's not</b>
<b>He's not</b> from Italy	<b>Is he</b> from Chile?	Yes, <b>he is</b>	No, <b>he's not</b>
<b>It's not</b> English	<b>Is it</b> Korean?	<b>it is</b>	<b>it's not</b>
<b>We're not</b> from Japan	<b>Are you</b> from China?	<b>we are</b>	<b>we're not</b>
<b>You're not</b> early	<b>Are we</b> late?	<b>you are</b>	<b>you're not</b>
<b>They're not</b> in Mexico	<b>Are they</b> in Canada?	<b>they are</b>	<b>they're not</b>
We're = We are			

**A** Complete the conversations. Then practice with a partner.

- A: Hiroshi, are you and Maiko from Japan?  
 B: Yes, we are.  
 A: Oh? are you from Tokyo?  
 B: No, we are not. We are from Kyoto.
- A: Is Laura from the U.S.?  
 B: No, she is not. She's from the U.K.  
 A: is she from London?  
 B: Yes, she is. But her parents are from Italy. are not from the U.K. originally.  
 A: is Laura's first language Italian?  
 B: No, she is not. It is English.
- A: are Selina and Carlos from Mexico?  
 B: No, are not. are from Brazil.  
 A: are you from Brazil, too?  
 B: No, I'm not. I'm from Peru.  
 A: So, is your first language Spanish?  
 B: Yes, it is.



**B** Match the questions with the answers. Then practice with a partner.

- Are you and your family from Canada? d
  - Is your first language English? e
  - Are you Japanese? c
  - Is Mr. Ho from Hong Kong? a
  - Is your mother from the U.S.? b
- No, he's not. He's from Singapore.
  - Yes, she is. She's from California.
  - No, it's not. It's Japanese.
  - No, we're not. We're from Australia.
  - Yes, we are. We're from Kyoto.

**C PAIR WORK** Write five questions like the ones in part B. Then ask and answer your questions with a partner.

## 2.4.- Wh-questions with be

### Wh-questions with be

**What's your name?**

My name is Jill

**Where are you from?**

I'm from Canada

**How are you today?**

I'm just fine.

**Who's that?**

He's my brother

**How old is he?**

He's twenty-one

**What's he like?**

He's very nice

Who's - Who is

**Who are they?**

They're my classmates

**Where are they from?**

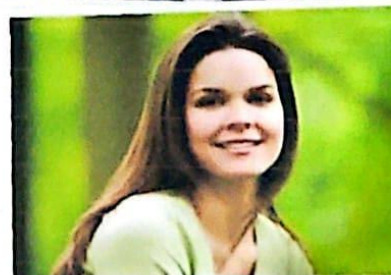
They're from Rio

**What's Rio like?**

It's very beautiful

**A** Complete the conversations with Wh-questions. Then practice with a partner.

- A: Look! Who's that ?  
 B: Oh, he's a new student.  
 A: What's your name ?  
 B: I think his name is Ming.  
 A: Ming? Where are they from?  
 B: He's from China.
- A: Serhat, Where are you from ?  
 B: I'm from Turkey - from Istanbul.  
 A: What's Istanbul like ?  
 B: Istanbul is very old and beautiful.  
 A: What's is your name  
 B: My last name is Erdogan.
- A: Hi, John. How are you ?  
 B: I'm just fine. My friend Teresa is here this week - from Argentina.  
 A: Oh, cool. What is she like?  
 B: She's really friendly.  
 A: How old is she ?  
 B: She's twenty eight years old.



**1 Negative statements and yes/no questions with be**

- ▶ Use *be* + *not* to form negative statements: Ana **isn't** a student. (NOT: Ana ~~is~~ ~~ne~~ a student.)
- ▶ You is a singular and a plural pronoun: Are **you** from Rio? Yes, I am./Yes, **we** a

**A Unscramble the words to write negative statements.**

1. in California / not / New York City / is  
New York City is not in California
2. London / not / from / we're  
We're not from London
3. not / you and Tim / in my class / are  
You and Tim are not in my class
4. is / my first language / Spanish / not  
Spanish is not my first language
5. from / my mother / not / is / Seoul  
my mother is not from Seoul
6. my keys / not / are / they  
they are not my keys

**B Complete the conversations.**

1. A: Are you and your family from Mexico? (No)  
B: No, we are not. We are from Guatemala.
2. A: is your first language English? (It)  
B: Yes, it is. My parents is from Australia.
3. A: Are Kenji and his friend Japanese?  
B: Yes, They are are. But They are in the U.S. now.
4. A: Are my mother and I late?  
B: No, we are not. We are early!

2 Wh-questions with *be*

- ▶ Use *what* to ask about things. Use *where* to ask about places. Use *Who* to ask about people. Use *What ... like?* to ask for a description.
- ▶ Use *how* to ask for a description: **How are** you today? Use *How old* to ask about age. **How old** is he?
- ▶ In answers about age, you can use only the number or the number + *years old*. He's 18. or He's 18 years old.

Complete the questions with *how, what, where, or who*. Then match the question with the answers.

- como? Donde? quien? Que? cual?
- |  |  |
|--|--|
| 1. <i>Who</i> is that? ... d               | a. We're from Thailand - from Bangkok. |
| 2. <i>What</i> is her name? ... c          | b. She's 16.                           |
| 3. <i>What</i> is she like? ... f          | c. Her name is Nittaya.                |
| 4. <i>Who</i> old is she? ... j            | d. She's my sister.                    |
| 5. <i>Where</i> is your family from? ... a | e. It's really beautiful.              |
| 6. <i>How</i> is Bangkok like? ... e       | f. She's a little shy.                 |

**WORD POWER** Descriptions

▶ Listen and practice.



UNIT II. WHERE ARE YOU FROM?

2.1. Cities and Countries

SNAPSHOT

2.1.1. Cities and Countries

The Ten Largest Cities in the World

Cities	Countries
1 Tokyo	a Brazil
2 Seoul	b China
3 Mexico City	c India
4 New York City	d Indonesia
5 Mumbai	e Japan
6 Jakarta	f Mexico
7 São Paulo	g South Korea
8 Delhi	h the U.S
9 Osaka	
10 Shanghai	

https://www.populationpyramid.net/cities/2018/

https://www.populationpyramid.net/cities/2018/

1. Listen to the audio and write the city name in the blank space. Write the country name in the blank space. What are the countries?

CONVERSATION Are you from Seoul?

2.1.1.1. Listen and practice

Jim: Are you from California, Jessica?  
 Jessica: Well, my family is in California now, but we're from South Korea originally.  
 Tom: Oh, my mother is Korean. From Seoul?  
 Jessica: Are you from Seoul?  
 Jessica: Yes, we're not. We're from Daejeon.  
 Tom: Was your first language Korean?  
 Jessica: Yes, it is.

2. Listen to Jessica and Tom talk to Tom, write the name of the country. Check ✓ if true or false.

	True	False
1. Jessica is from California.	✓	
2. Tom's mother is from Seoul.		✓
3. Jessica's first language is Korean.	✓	



CS Escaneado con CamScanner