



English I

Activity: WHERE ARE YOU FROM?

1st, four nonths

Name: Josefa Pérez Magaña

Teacher name: Georgina Olivia Vidal Alfonso

Date; December 4, 2023.

Libro en línea:

1. Universidad del Sureste. Inglés I. Universidad del Sureste. UDS ENGLISH HANDBOORK-LRVRL. COLLEGE DEGREE CUATRIMESTRE: septiembre – diciembre. Recuperado de:
<https://plataformaeducativauds.com.mx/assets/docs/libro/LAN/f465fab46f8cfc1b3fc9edda15c08f42-LC-LAN106%20NGLES%20I.pdf>

UNIT II. WHERE ARE YOU FROM?


2.1.- Cities and Countries

1 **SNAPSHOT**

🎧 Listen and practice.

The Ten Largest Cities in the World

(based on population in the metropolitan area)



Cities	Countries
1. Tokyo	a. Brazil
2. Seoul	b. China
3. Mexico City	c. India
4. New York City	d. Indonesia
5. Mumbai	e. Japan
6. Jakarta	f. Mexico
7. São Paulo	g. South Korea
8. Delhi	h. the U.S.
9. Osaka	
10. Shanghai	

Answers: 1.e 2.g 3.f 4.h 5.c 6.d 7.a 8.c 9.e 10.b

Source: www.worldatlas.com

Match the cities with the countries. Then check your answers at the bottom of the Snapshot. What other large cities are in each country? What large cities are in your country?

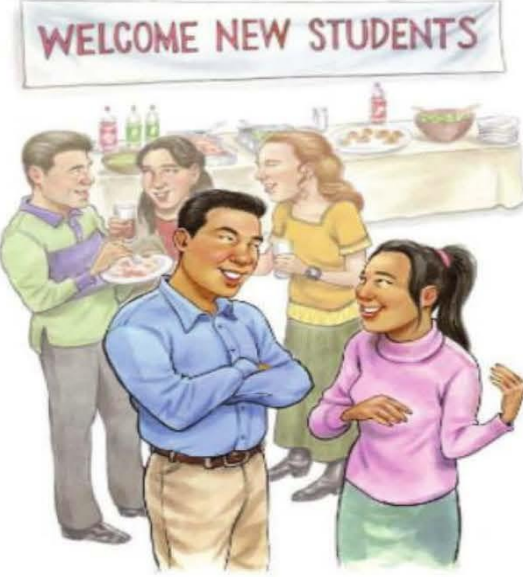
2 **CONVERSATION** Are you from Seoul?

A 🎧 Listen and practice.

Tim: Are you from California, Jessica?
 Jessica: Well, my family is in California now, but we're from South Korea originally.
 Tim: Oh, my mother is Korean – from Seoul! Are you from Seoul?
 Jessica: No, we're not. We're from Daejeon.
 Tim: So is your first language Korean?
 Jessica: Yes, it is.

🎧 **B** 🎧 Listen to Jessica and Tim talk to Tony, Natasha, and Monique. Check (✓) True or False.

	True	False
1. Tony is from Italy.	<input type="checkbox"/>	<input checked="" type="checkbox"/>
2. Natasha is from New York.	<input checked="" type="checkbox"/>	<input type="checkbox"/>
3. Monique's first language is English.	<input type="checkbox"/>	<input checked="" type="checkbox"/>



2.2.- Negative and Questions with be

Negative statements and yes/no questions with be

I'm not from New York.	Are you from California?	I am.	I'm not.
You're not late.	Am I early?	you are.	you're not.
She's not from Russia.	Is she from Brazil?	she is.	she's not.
He's not from Italy.	Is he from Chile?	Yes, he is.	No, he's not.
It's not English.	Is it Korean?	it is.	it's not.
We're not from Japan.	Are you from China?	we are.	we're not.
You're not early.	Are we late?	you are.	you're not.
They're not in Mexico.	Are they in Canada?	they are.	they're not.

We're = We are

A Complete the conversations. Then practice with a partner.

- A: Hiroshi, are you and Maiko from Japan?
 B: Yes, we 're from Japan .
 A: Oh? are you from Tokyo?
 B: No, I'm not. I am from Kyoto.
- A: Is she Laura from the U.S.?
 B: No, is not. She's from the U.K.
 A: is she from London?
 B: Yes, she is . But her parents are from Italy. They're not from the U.K. originally.
 A: it Laura's first language Italian?
 B: No, It's not. is it English.
- A: Are they Selina and Carlos from Mexico?
 B: No, they're not. they are from Brazil.
 A: are they you from Brazil, too?
 B: No, they're not. I'm from Peru.
 A: So, is it your first language Spanish?
 B: Yes, it is .



B Match the questions with the answers. Then practice with a partner.

- | | |
|--|---|
| 1. Are you and your family from Canada? <u>d</u> | a. No, he's not. He's from Singapore. |
| 2. Is your first language English? <u>c</u> | b. Yes, she is. She's from California. |
| 3. Are you Japanese? <u>e</u> | c. No, it's not. It's Japanese. |
| 4. Is Mr. Ho from Hong Kong? <u>a</u> | d. No, we're not. We're from Australia. |
| 5. Is your mother from the U.S.? <u>b</u> | e. Yes, we are. We're from Kyoto. |

C PAIR WORK Write five questions like the ones in part B. Then ask and answer your questions with a partner.

1 Negative statements and yes/no questions with be

- ▶ Use *be* + *not* to form negative statements: Ana **isn't** a student. (NOT: ~~Ana is no a student.~~)
- ▶ *You* is a singular and a plural pronoun: Are **you** from Rio? Yes, I am./Yes, **we** are.

A Unscramble the words to write negative statements.

1. in California / not / New York City / is
New York City is not in California.
2. London / not / from / we're
We're not from London
3. not / you and Tim / in my class / are
You and Tim are not in my class
4. is / my first language / Spanish / not
Spanish isn't my first language
5. from / my mother / not / is / Seoul
My mother isn't from Seoul
6. my keys / not / are / they
They're not my keys

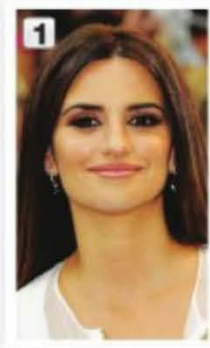
B Complete the conversations.

1. A: Are you and your family from Mexico?
B: No, we're not. we are from Guatemala.
2. A: is your first language English?
B: Yes, it is My parents are from Australia.
3. A: are Kenji and his friend Japanese?
B: Yes, they are. But they from in the U.S. now.
4. A: are my mother and I late?
B: No, you're not. You're early!

2.2.- Where are they from?

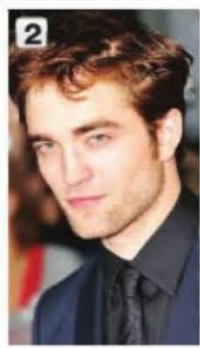
WHERE ARE THEY FROM?

A Where are these people from? Check (✓) your guesses.



Penelope Cruz

- Mexico
- France
- Spain



Robert Pattinson

- the U.S.
- the U.K.
- Canada



Haru Nomura

- South Korea
- Japan
- China



Cate Blanchett

- Australia
- New Zealand
- South Africa



Javier Hernández

- Brazil
- Mexico
- Chile

B PAIRWORK Compare your guesses. Then check your answers at the bottom of the page.

A: Is Penelope Cruz from Mexico?

B: No, she's not.

A: Is she from France?

Answers: 1. Spain 2. the U.K. 3. Japan 4. Australia 5. Mexico

CONVERSATION *He's cute.*

🎧 Listen and practice.

Emma: Who's that?

Jill: He's my brother.

Emma: Wow! He's cute. What's his name?

Jill: James. We call him Jim.

Emma: Oh, how old is he?

Jill: He's twenty-one years old.

Emma: What's he like? Is he nice?

Jill: Yes, he is – and he's very smart, too!

Emma: And who's that?

Jill: My sister Tammy. She's only twelve. She's the baby of the family.



2.3.- Numbers and Ages

NUMBERS AND AGES

A  Listen and practice.

11 eleven	21 twenty-one	40 forty
12 twelve	22 twenty-two	50 fifty
13 thirteen	23 twenty-three	60 sixty
14 fourteen	24 twenty-four	70 seventy
15 fifteen	25 twenty-five	80 eighty
16 sixteen	26 twenty-six	90 ninety
17 seventeen	27 twenty-seven	100 one hundred
18 eighteen	28 twenty-eight	101 one hundred (and) one
19 nineteen	29 twenty-nine	102 one hundred (and) two
20 twenty	30 thirty	103 one hundred (and) three

B  Listen and practice. Notice the word stress.

 thirteen – thirty

 fourteen – forty

 fifteen – fifty

 sixteen – sixty

C PAIR WORK Look at the people in Jill's family for one minute. Then close your books. How old are they? Tell your partner.



A. Helen – 76



B. Howard – 52



C. Jackie – 49



D. Megan – 23



E. Tim and Tom – 14

2.4.- Wh-questions with be

Wh-questions with be

What's your name?

My name is Jill.

Where are you from?

I'm from Canada.

How are you today?

I'm just fine.

Who's that?

He's my brother.

How old is he?

He's twenty-one.

What's he like?

He's very nice.

Who's = Who is

Who are they?

They're my classmates.

Where are they from?

They're from Rio.

What's Rio like?

It's very beautiful.

A Complete the conversations with Wh-questions. Then practice with a partner.

- A: Look! *Who's that* ?
 B: Oh, he's a new student.
 A: *What's his name?* ?
 B: I think his name is Ming.
 A: Ming? *where are they from* ?
 B: He's from China.
- A: Serhat, *where are they you from* ?
 B: I'm from Turkey – from Istanbul.
 A: *How old is Istanbul?* ?
 B: Istanbul is very old and beautiful.
 A: *What's your last name* ?
 B: My last name is Erdogan.
- A: Hi, John. *How are you doing?* ?
 B: I'm just fine. My friend Teresa is here this week – from Argentina.
 A: Oh, cool. *what's she like* ?
 B: She's really friendly.
 A: *how old is she* ?
 B: She's twenty-eight years old.



2 Wh-questions with *be*

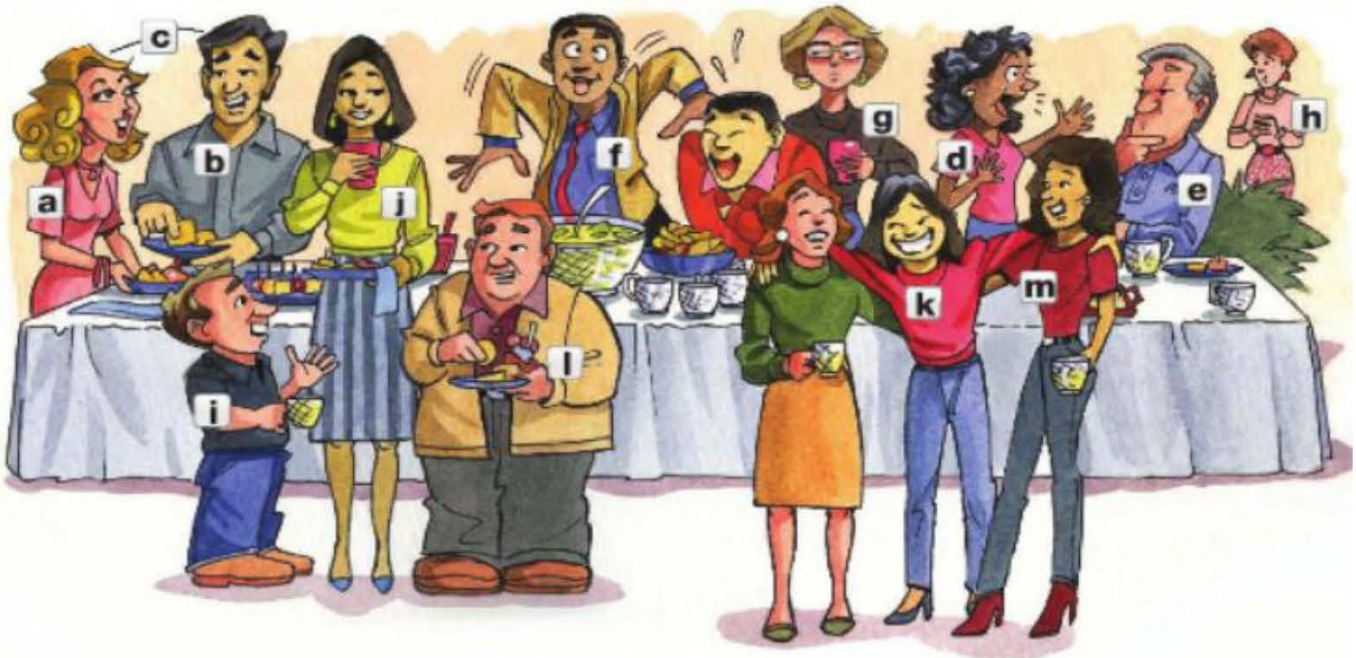
- ▶ Use *what* to ask about things. Use *where* to ask about places. Use *Who* to ask about people. Use *What... like?* to ask for a description.
- ▶ Use *how* to ask for a description: **How are** you today? Use *How old* to ask about age: **How old** is he?
- ▶ In answers about age, you can use only the number or the number + *years old*: He's **18**. OR He's **18 years old**.

Complete the questions with *how, what, where, or who*. Then match the questions with the answers.

- | | |
|---|--|
| 1. <i>Who</i> is that? <i>d</i> | a. We're from Thailand – from Bangkok. |
| 2. <i>What</i> is her name? <i>c</i> | b. She's 16. |
| 3. <i>Who</i> is she like? <i>d</i> | c. Her name is Nittaya. |
| 4. <i>How</i> old is she? <i>b</i> | d. She's my sister. |
| 5. <i>Where</i> is your family from? <i>a</i> | e. It's really beautiful. |
| 6. <i>What</i> is Bangkok like? <i>e</i> | f. She's a little shy. |

WORD POWER Descriptions

A  Listen and practice.



- | | | | | |
|-----------------|--------------|------------|-------------|---------|
| a. pretty | d. talkative | g. serious | j. tall | m. thin |
| b. handsome | e. quiet | h. shy | k. friendly | |
| c. good-looking | f. funny | i. short | l. heavy | |