



**Mi Universidad**

**Workbook de ingles.**

*Name: Ali Otoniel López Morales.*

*Topic: Where are you from?*

*Subject: english I*

*Teacher's name: Georgina Olivia Vidal Alfonzo.*

*Carrer: Nursing.*

*Grade: I Group: A*

# - Negative and Questions with be

## Negative statements and yes/no questions with be

I'm **not** from New York.  
 You're **not** late.  
 She's **not** from Russia.  
 He's **not** from Italy.  
 It's **not** English.  
 We're **not** from Japan.  
 You're **not** early.  
 They're **not** in Mexico.

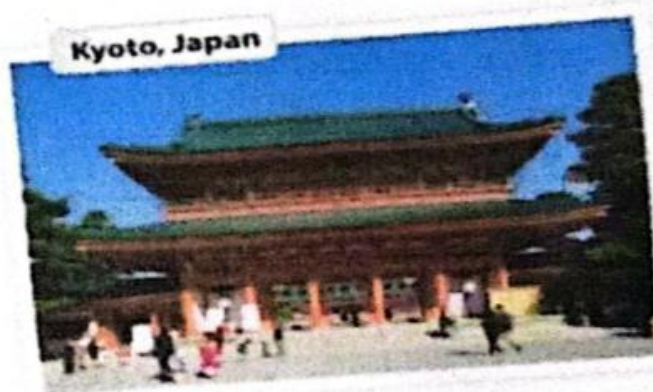
We're = We are

Are **you** from California?  
 Am **I** early?  
 Is **she** from Brazil?  
 Is **he** from Chile?  
 Is **it** Korean?  
 Are **you** from China?  
 Are **we** late?  
 Are **they** in Canada?

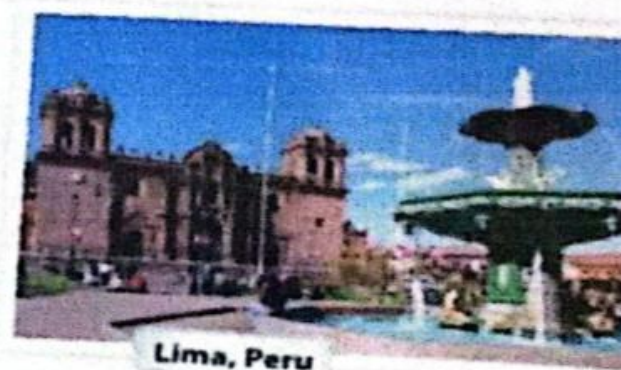
I am.	I'm	not
you are.	you're	not
she is.	she's	not
he is.	he's	not
it is.	it's	not
we are.	we're	not
you are.	you're	not
they are.	they're	not

### A Complete the conversations. Then practice with a partner.

- A: Hiroshi, are you and Maiko from Japan?  
 B: Yes, we are.  
 A: Oh? are you from Tokyo?  
 B: No, We're not. We are from Kyoto.
- A: Is Laura from the U.S.?  
 B: No, she's not. She's from the U.K.  
 A: Is she from London?  
 B: Yes, she is. But her parents are from Italy. They are not from the U.K. originally.  
 A: Is Laura's first language Italian?  
 B: No, it's not. It is English.
- A: Are Selina and Carlos from Mexico?  
 B: No, they're not. They are from Brazil.  
 A: Are you from Brazil, too?  
 B: No, I'm not. I'm from Peru.  
 A: So, is your first language Spanish?  
 B: Yes, it is.



Kyoto, Japan



Lima, Peru

### B Match the questions with the answers. Then practice with a partner.

- |  |  |
|--|--|
| 1. Are you and your family from Canada? <u>d</u> | -a. No, he's not. He's from Singapore.   |
| 2. Is your first language English? <u>c</u>      | -b. Yes, she is. She's from California.  |
| 3. Are you Japanese? <u>e</u>                    | -c. No, it's not. It's Japanese.         |
| 4. Is Mr. Ho from Hong Kong? <u>a</u>            | -d. No, we're not. We're from Australia. |
| 5. Is your mother from the U.S.? <u>b</u>        | -e. Yes, we are. We're from Kyoto.       |

### C PAIR WORK Write five questions like the ones in part B. Then ask and answer your questions with a partner.



## 1 Negative statements and yes/no questions with be

- ▶ Use *be* + *not* to form negative statements: Ana **isn't** a student. (NOT: Ana ~~isn't~~ a student.)
- ▶ *You* is a singular and a plural pronoun: Are **you** from Rio? Yes, I am./Yes, we

### A Unscramble the words to write negative statements.

1. in California / not / New York City / is  
New York City is not in California.
2. London / not / from / we're  
We're not from London.
3. not / you and Tim / in my class / are  
You and Tim are not in my class.
4. is / my first language / Spanish / not  
Spanish is not my first language.
5. from / my mother / not / is / Seoul  
My Mother is not from Seoul.
6. my keys / not / are / they  
Are they not my keys.

### B Complete the conversations.

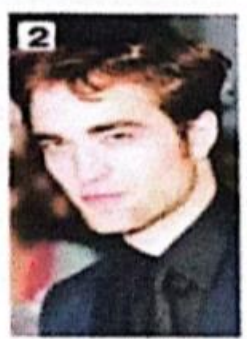
1. A: Are you and your family from Mexico?  
B: No, We're not. We are from Guatemala.
2. A: Is your first language English?  
B: Yes, it is. My parents Are from Australia.
3. A: Are Kenji and his friend Japanese?  
B: Yes, We are. But We're in the U.S. now.
4. A: Are my mother and I late?  
B: No, You're not. Arrived early!



## 2.2.- Where are they from?

### WHERE ARE THEY FROM?

**A** Where are these people from? Check (✓) your guesses.



**Penelope Cruz**  
 Mexico  
 France  
 Spain

**Robert Pattinson**  
 the U.S.  
 the U.K.  
 Canada

**Haru Nomura**  
 South Korea  
 Japan  
 China

**Cate Blanchett**  
 Australia  
 New Zealand  
 South Africa

**Javier Hernández**  
 Brazil  
 Mexico  
 Chile

**B PAIRWORK** Compare your guesses. Then check your answers at the bottom of the page.

A: Is Penelope Cruz from Mexico?  
 B: No, she's not.  
 A: Is she from France?

Answers: 1. Spain 2. the U.K. 3. Japan 4. Australia 5. Mexico

### CONVERSATION He's cute.

**⊙** Listen and practice.

Emma: Who's that?  
 Jill: He's my brother.  
 Emma: Wow! He's cute. What's his name?  
 Jill: James. We call him Jim.  
 Emma: Oh, how old is he?  
 Jill: He's twenty-one years old.  
 Emma: What's he like? Is he nice?  
 Jill: Yes, he is - and he's very smart, too!  
 Emma: And who's that?  
 Jill: My sister Tammy. She's only twelve. She's the baby of the family.





## 4.- Wh-questions with be

### Wh-questions with be

**What's your name?**

My name is Jill.

**Where are you from?**

I'm from Canada.

**How are you today?**

I'm just fine.

**Who's that?**

He's my brother.

**How old is he?**

He's twenty-one.

**What's he like?**

He's very nice.

Who's = Who is

**Who are they?**

They're my classmates.

**Where are they from?**

They're from Rio.

**What's Rio like?**

It's very beautiful.

Complete the conversations with Wh-questions. Then practice with a partner.

- A: Look! Who's that ?

B: Oh, he's a new student.

A: Who's his name?

B: I think his name is Ming.

A: Ming? Where is he from?

B: He's from China.
- A: Serhat, Where are you from?

B: I'm from Turkey - from Istanbul.

A: What's Istanbul like?

B: Istanbul is very old and beautiful.

A: What's your last name?

B: My last name is Erdogan.
- A: Hi, John. How are you?

B: I'm just fine. My friend Teresa is here this week - from Argentina.

A: Oh, cool. What's she like?

B: She's really friendly.

A: How old is she?

B: She's twenty-eight years old.





## 2 Wh-questions with be

- ▶ Use *what* to ask about things. Use *where* to ask about places. Use *Who* to ask about people. Use *What... like?* to ask for a description.
- ▶ Use *how* to ask for a description: **How are you today?** Use *How old* to ask about age: **How old** is he?
- ▶ In answers about age, you can use only the number or the number + years: **He's 18.** OR **He's 18 years old.**

Complete the questions with *how, what, where, or who*. Then match the questions with the answers.

- ..... *Who*..... is that? ..... *d*.....
- ..... *What*..... is her name? ..... *c*.....
- ..... *What*..... is she like? ..... *f*.....
- ..... *How*..... old is she? ..... *b*.....
- ..... *Where*..... is your family from? ..... *a*.....
- ..... *How*..... is Bangkok like? ..... *e*.....

- a. We're from Thailand – from Bangkok.
- b. She's 16.
- c. Her name is Nittaya.
- d. She's my sister.
- e. It's really beautiful.
- f. She's a little shy.

## WORD POWER Descriptions

▶ Listen and practice.



- a. pretty
- b. handsome
- c. good-looking
- d. talkative
- e. quiet
- f. funny
- g. serious
- h. shy
- i. short
- j. tall
- k. friendly
- l. heavy
- m. thin