



UNIVERSIDAD DEL SURESTE

**LICENCIATURA EN ENFERMERÍA.
GRADO Y GRUPO:1A**

**PRESENTA:
MARTÍN ANTONIO PÉREZ TORRES**

**TEMA:
WHERE ARE YOU FROM**

**DOCENTE:
GEORGINA OLIVIA VIDAL**

1 Negative statements and yes/no questions with be

- ▶ Use be + not to form negative statements: Ana **isn't** a student. (not: Ana ~~is~~ not a student.)
- ▶ You is a singular and a plural pronoun: Are **you** from Rio? Yes, I am./Yes, **we** are

A Unscramble the words to write negative statements.

1. in California / not / New York City / is
New York City is not in California.
2. London / not / from / we're
where not from London
3. not / you and Tim / in my class / are
you not are in my class you and Tim
4. is / my first language / Spanish / not
not is my first language Spanish
5. from / my mother / not / is / Seoul
my mother not is from Seoul
6. my keys / not / are / they
they are not my keys

B Complete the conversations.

1. A: Are you and your family from Mexico?
B: No, she's not are from Guatemala.
2. A: perhaps your first language English?
B: Yes, it is. My parents they are from Australia.
3. A: he is Kenji and his friend Japanese?
B: Yes, they are are. But live in the U.S. now.
4. A: she is my mother and I late?
B: No, not are not arrived early!

2.2.- Where are they from?

WHERE ARE THEY FROM?

A Where are these people from? Check (✓) your guesses.



- Penelope Cruz**
- Mexico
 - France
 - Spain



- Robert Pattinson**
- the U.S.
 - the U.K.
 - Canada



- Haru Nomura**
- South Korea
 - Japan
 - China



- Cate Blanchett**
- Australia
 - New Zealand
 - South Africa



- Javier Hernández**
- Brazil
 - Mexico
 - Chile

34/95

B PAIR WORK Compare your guesses. Then check your answers at the bottom of the page.

- A: Is Penelope Cruz from Mexico?
 B: No, she's not.
 A: Is she from France?

Answers: 1 Spain 2 the U.K. 3 Japan 4 Australia 5 Mexico

CONVERSATION *He's cute.*

🎧 Listen and practice.

- Emma: Who's that?
 Jill: He's my brother.
 Emma: Wow! He's cute. What's his name?
 Jill: James. We call him Jim.
 Emma: Oh, how old is he?
 Jill: He's twenty-one years old.
 Emma: What's he like? Is he nice?
 Jill: Yes, he is - and he's very smart, too!
 Emma: And who's that?
 Jill: My sister Tammy. She's only twelve. She's the baby of the family.



2.4.- Wh-questions with be

Wh-questions with be

What's your name?

My name is Jill.

Where are you from?

I'm from Canada.

How are you today?

I'm just fine.

Who's that?

He's my brother.

How old is he?

He's twenty-one.

What's he like?

He's very nice.

Who's = Who is

Who are they?

They're my classmates.

Where are they from?

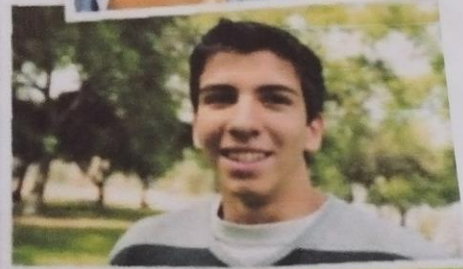
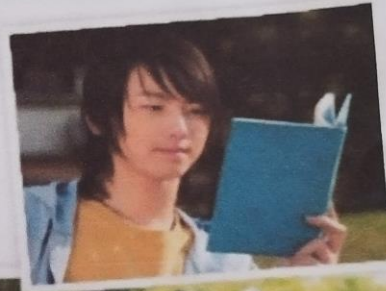
They're from Rio.

What's Rio like?

It's very beautiful.

A Complete the conversations with Wh-questions.
Then practice with a partner.

- A: Look! Who's that ?
 B: Oh, he's a new student.
 A: What's his name ?
 B: I think his name is Ming.
 A: Ming? Where is he from ?
 B: He's from China.
- A: Serhat, where are you from ?
 B: I'm from Turkey - from Istanbul.
 A: What's Istanbul like ?
 B: Istanbul is very old and beautiful.
 A: and how your name ?
 B: My last name is Erdogan.
- A: Hi, John. how are you ?
 B: I'm just fine. My friend Teresa is here this week - from Argentina.
 A: Oh, cool. very well ?
 B: She's really friendly.
 A: how old is she ?
 B: She's twenty-eight years old.



2.2.- Negative and Questions with be

Negative statements and yes/no questions with be

I'm **not** from New York.
 You're **not** late.
 She's **not** from Russia.
 He's **not** from Italy.
 It's **not** English.
 We're **not** from Japan.
 You're **not** early.
 They're **not** in Mexico.

Are you from California?
 Am I early?
 Is she from Brazil?
 Is he from Chile?
 Is it Korean?
 Are you from China?
 Are we late?
 Are they in Canada?

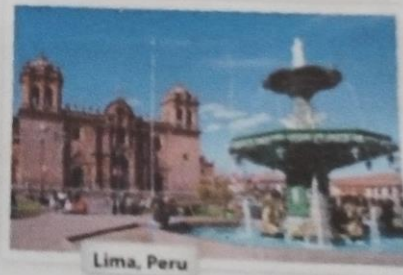
I am.
 you are
 she is
 he is
 it is
 we are
 you are
 they are

I'm not
 you're not
 she's not
 he's not
 it's not
 we're not
 you're not
 they're not

We're = We are

Complete the conversations. Then practice with a partner.

- A: Hiroshi, are you and Maiko from Japan?
 B: Yes, we are.
 A: Oh? are you from Tokyo?
 B: No, we're not. We are from Kyoto.
- A: are you Laura from the U.S.?
 B: No, I'm not. She's from the U.K.
 A: then she from London?
 B: Yes, she is. But her parents are from Italy. but not from the U.K. originally.
 A: is Laura's first language Italian?
 B: No, it is not. It is English.
- A: are you Selina and Carlos from Mexico?
 B: No, they are not. We are from Brazil.
 A: also you from Brazil, too?
 B: No, it is not. I'm from Peru.
 A: So, is your first language Spanish?
 B: Yes, it is.



Match the questions with the answers. Then practice with a partner.

- Are you and your family from Canada? d
 - Is your first language English? c
 - Are you Japanese? c
 - Is Mr. Ho from Hong Kong? a
 - Is your mother from the U.S.? d
- No, he's not. He's from Singapore.
 - Yes, she is. She's from California.
 - No, it's not. It's Japanese.
 - No, we're not. We're from Australia.
 - Yes, we are. We're from Kyoto.

PAIRWORK Write five questions like the ones in part B. Then ask and answer

2 Wh-questions with be

- ▶ Use *what* to ask about things. Use *where* to ask about places. Use *Who* to ask about people. Use *What ... like?* to ask for a description.
- ▶ Use *how* to ask for a description: **How are you today?** Use *How old* to ask about age: **How old** is he?
- ▶ In answers about age, you can use only the number or the number + years old. He's **18**. OR He's **18 years old**.

Complete the questions with *how*, *what*, *where*, or *who*. Then match the question with the answers.

1. Who is that? d
 2. What is her name? c
 3. Where is she like? f
 4. How old is she? b
 5. Where is your family from? a
 6. How is Bangkok like? e
- a. We're from Thailand - from Bangkok
 - b. She's 16. she's 16
 - c. Her name is Nittaya.
 - d. She's my sister.
 - e. It's really beautiful.
 - f. She's a little shy.

WORD POWER Descriptions

A Listen and practice.



- a. pretty
- b. handsome
- c. good-looking
- d. talkative
- e. quiet
- f. funny
- g. serious
- h. shy
- i. short
- j. tall
- k. friendly
- l. heavy
- m. thin