



## ENGLISH 1

**TOPIC:** WHERE ARE YOU FROM?

**GRADE AND GROUP:** First semester  
group A.

**TEACHER:** Georgina Olivia Vidal  
Alfonso.

**STUDENT:** Yuliana Guadalupe Moreno  
Hernández.

**SPECIALTY:** Nursing degree.

**DATE:** December 4<sup>th</sup> of 2023.



## 1 Negative statements and yes/no questions with be

- ▶ Use *be* + *not* to form negative statements: Ana **isn't** a student. (NOT: ~~Ana is not~~ a student.)
- ▶ You is a singular and a plural pronoun: Are **you** from Rio? Yes, I am./Yes, **we** are

### A Unscramble the words to write negative statements.

1. in California / not / New York City / is  
New York City is not in California.
2. London / not / from / we're  
We're not from London.
3. not / you and Tim / in my class / are  
You and Tim are not in my class.
4. is / my first language / Spanish / not  
Spanish is not my first language.
5. from / my mother / not / is / Seoul  
Seoul is not from my mother.
6. my keys / not / are / they  
They are not my keys.

### B Complete the conversations.

1. A: Are you and your family from Mexico?  
B: No, We're not. Were from Guatemala.
2. A: Are your first language English?  
B: Yes, it is. My parents are from Australia.
3. A: Are they Kenji and his friend Japanese?  
B: Yes, they are. But they are in the U.S. now.
4. A: Are we my mother and I late?  
B: No, We're not. We are early!



## 2 Wh-questions with be

- ▶ Use *what* to ask about things. Use *where* to ask about places. Use *Who* to ask about people. Use *What ... like?* to ask for a description.
- ▶ Use *how* to ask for a description: **How are** you today? Use *How old* to ask about age: **How old** is he?
- ▶ In answers about age, you can use only the number or the number + *years old*.  
He's **18**. OR He's **18 years old**.

Complete the questions with *how*, *what*, *where*, or *who*. Then match the question with the answers.

1. Who is that? d
2. What is her name? c
3. What is she like? f
4. How old is she? b
5. Where is your family from? a
6. What is Bangkok like? e

- a. We're from Thailand – from Bangkok.
- b. She's 16.
- c. Her name is Nittaya.
- d. She's my sister.
- e. It's really beautiful.
- f. She's a little shy.

## WORD POWER Descriptions

A Listen and practice.



- a. pretty
- b. handsome
- c. good-looking

- d. talkative
- e. quiet
- f. funny

- g. serious
- h. shy
- i. short

- j. tall
- k. friendly
- l. heavy

- m. thin

## 2.4.- Wh-questions with be

### Wh-questions with be

**What's your name?**

My name is Jill.

**Where are you from?**

I'm from Canada.

**How are you today?**

I'm just fine.

**Who's that?**

He's my brother.

**How old is he?**

He's twenty-one.

**What's he like?**

He's very nice.

Who's = Who is

**Who are they?**

They're my classmates.

**Where are they from?**

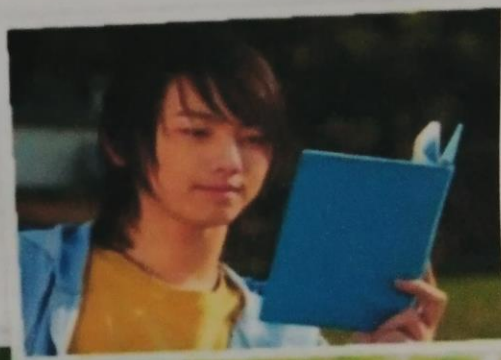
They're from Rio.

**What's Rio like?**

It's very beautiful.

**A** Complete the conversations with Wh-questions. Then practice with a partner.

- A: Look! Who's that..... ?  
 B: Oh, he's a new student.  
 A: What's your name..... ?  
 B: I think his name is Ming.  
 A: Ming? Where are you from..... ?  
 B: He's from China.
- A: Serhat, where are you from ?  
 B: I'm from Turkey - from Istanbul.  
 A: What's Istanbul like..... ?  
 B: Istanbul is very old and beautiful.  
 A: Who's that..... ?  
 B: My last name is Erdogan.
- A: Hi, John. How are you today..... ?  
 B: I'm just fine. My friend Teresa is here this week - from Argentina.  
 A: Oh, cool. What's she like..... ?  
 B: She's really friendly.  
 A: How old is she..... ?  
 B: She's twenty-eight years old.





## 2.2.- Negative and Questions with be

### Negative statements and yes/no questions with be

I'm **not** from New York.  
 You're **not** late.  
 She's **not** from Russia.  
 He's **not** from Italy.  
 It's **not** English.  
 We're **not** from Japan.  
 You're **not** early.  
 They're **not** in Mexico.

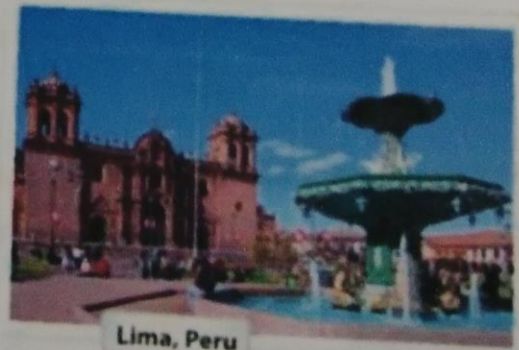
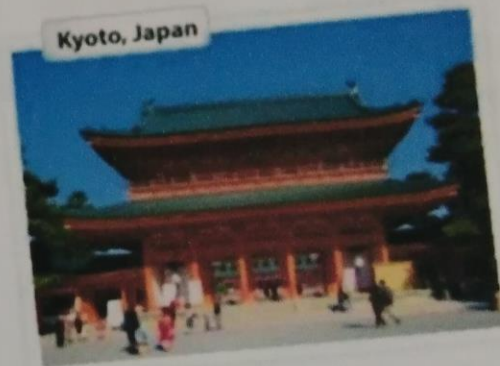
Are **you** from California?  
 Am **I** early?  
 Is **she** from Brazil?  
 Is **he** from Chile?  
 Is **it** Korean?  
 Are **you** from China?  
 Are **we** late?  
 Are **they** in Canada?

I am.	I'm	not.
you are.	you're	not.
she is.	she's	not.
Yes, he is.	No, he's	not.
it is.	it's	not.
we are.	we're	not.
you are.	you're	not.
they are.	they're	not.

We're = We are

**A** Complete the conversations. Then practice with a partner.

- A: Hiroshi, are you and Maiko from Japan?  
 B: Yes, we are.  
 A: Oh? are you from Tokyo?  
 B: No, I am not. I'm from Kyoto.
- A: Is she Laura from the U.S.?  
 B: No, she is not. She's from the U.K.  
 A: Is she from London?  
 B: Yes, she is. But her parents are from Italy. they not from the U.K. originally.  
 A: is she Laura's first language Italian?  
 B: No, she's not. she is English.
- A: Are they Selina and Carlos from Mexico?  
 B: No, they's not. they are from Brazil.  
 A: Are you from Brazil, too?  
 B: No, I am not. I'm from Peru.  
 A: So, is it your first language Spanish?  
 B: Yes, it is.



**B** Match the questions with the answers. Then practice with a partner.

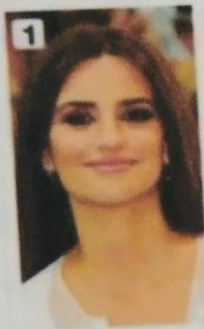
- |  |   |
|--|---|
| 1. Are you and your family from Canada? <u>d</u> | a. No, he's not. He's from Singapore.   |
| 2. Is your first language English? <u>c</u>      | b. Yes, she is. She's from California.  |
| 3. Are you Japanese? <u>a</u>                    | c. No, it's not. It's Japanese.         |
| 4. Is Mr. Ho from Hong Kong? <u>e</u>            | d. No, we're not. We're from Australia. |
| 5. Is your mother from the U.S.? <u>b</u>        | e. Yes, we are. We're from Kyoto.       |

**C PAIR WORK** Write five questions like the ones in part B. Then ask and answer your questions with a partner.

## 2.2.- Where are they from?

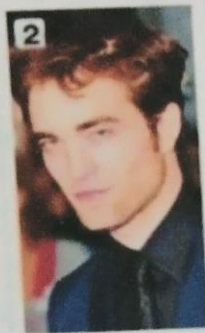
### WHERE ARE THEY FROM?

**A** Where are these people from? Check (✓) your guesses.



**Penelope Cruz**

- Mexico
- France
- Spain



**Robert Pattinson**

- the U.S.
- the U.K.
- Canada



**Haru Nomura**

- South Korea
- Japan
- China



**Cate Blanchett**

- Australia
- New Zealand
- South Africa



**Javier Hernández**

- Brazil
- Mexico
- Chile

**B PAIR WORK** Compare your guesses. Then check your answers at the bottom of the page.

- A: Is Penelope Cruz from Mexico?  
 B: No, she's not.  
 A: Is she from France?

Answers: 1. Spain 2. the U.K. 3. Japan 4. Australia 5. Mexico

### CONVERSATION *He's cute.*

🎧 Listen and practice.

- Emma: Who's that?  
 Jill: He's my brother.  
 Emma: Wow! He's cute. What's his name?  
 Jill: James. We call him Jim.  
 Emma: Oh, how old is he?  
 Jill: He's twenty-one years old.  
 Emma: What's he like? Is he nice?  
 Jill: Yes, he is – and he's very smart, too!  
 Emma: And who's that?  
 Jill: My sister Tammy. She's only twelve. She's the baby of the family.

