

INGLES

Activity

MISS Gina Vidal

ALUMNA: Odalis García Gómez

**Primer
cuatrimestre
Grupo A**

DECEMBER/03/2023



2 Wh-questions with be

- ▶ Use *what* to ask about things. Use *where* to ask about places. Use *Who* to ask about people. Use *What ... like?* to ask for a description.
- ▶ Use *how* to ask for a description: **How are you today?** Use *How old* to ask about age: **How old** is he?
- ▶ In answers about age, you can use only the number or the number + *years old*.
He's **18**. OR He's **18 years old**.

Complete the questions with *how, what, where, or who*. Then match the question with the answers.

Como que donde quien

1. Who is that? ...d...
 2. how is her name? ...c...
 3. how is she like? ...f...
 4. what old is she? ...b...
 5. where is your family from? ...a...
 6. how is Bangkok like? ...e...
- a. We're from Thailand – from Bangkok.
 - b. She's 16.
 - c. Her name is Nittaya.
 - d. She's my sister.
 - e. It's really beautiful.
 - f. She's a little shy.

WORD POWER Descriptions

A Listen and practice.



- | | | | | |
|-----------------|--------------|------------|-------------|---------|
| a. pretty | d. talkative | g. serious | j. tall | m. thin |
| b. handsome | e. quiet | h. shy | k. friendly | |
| c. good-looking | f. funny | i. short | l. heavy | |

1 Negative statements and yes/no questions with be

- ▶ Use *be* + *not* to form negative statements: Ana **isn't** a student. (NOT: ~~Ana is not a student.~~)
- ▶ You is a singular and a plural pronoun: Are **you** from Rio? Yes, I am./Yes, **we** are

A Unscramble the words to write negative statements.

1. in California / not / New York City / is
New York City is not in California.
2. London / not / from / we're
not we're from London
3. not / you and Tim / in my class / are
you and Tim not are in my class
4. is / my first language / Spanish / not
Spanish not is my first language
5. from / my mother / not / is / Seoul
my mother not is from Seoul
6. my keys / not / are / they
they not are my keys

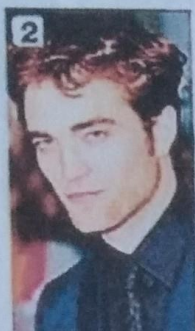
B Complete the conversations.

1. A: Are you and your family from Mexico?
B: No, we are not. from Mexico from Guatemala.
2. A: you your first language English?
B: Yes, it they. My parents are from Australia.
3. A: and Kenji and his friend Japanese?
B: Yes, they are. But they live in the U.S. now.
4. A: my mother and I late?
B: No, we not early!

2.2.- Where are they from?

WHERE ARE THEY FROM?

A Where are these people from? Check (✓) your guesses.



1 Penelope Cruz

- Mexico
- France
- Spain

2 Robert Pattinson

- the U.S.
- the U.K.
- Canada

3 Haru Nomura

- South Korea
- Japan
- China

4 Cate Blanchett

- Australia
- New Zealand
- South Africa

5 Javier Hernández

- Brazil
- Mexico
- Chile

B PAIR WORK Compare your guesses. Then check your answers at the bottom of the page.

A: Is Penelope Cruz from Mexico?

B: No, she's not.

A: Is she from France?

Answers: 1 Spain 2 the U.K. 3 Japan 4 Australia 5 Mexico

CONVERSATION He's cute.

🎧 Listen and practice.

Emma: Who's that?

Jill: He's my brother.

Emma: Wow! He's cute. What's his name?

Jill: James. We call him Jim.

Emma: Oh, how old is he?

Jill: He's twenty-one years old.

Emma: What's he like? Is he nice?

Jill: Yes, he is - and he's very smart, too!

Emma: And who's that?

Jill: My sister Tammy. She's only twelve. She's the baby of the family.



2.2.- Negative and Questions with be

Negative statements and yes/no questions with be

I'm **not** from New York.
 You're **not** late.
 She's **not** from Russia.
 He's **not** from Italy.
 It's **not** English.
 We're **not** from Japan.
 You're **not** early.
 They're **not** in Mexico.

We're = We are

Are **you** from California?
 Am **I** early?
 Is **she** from Brazil?
 Is **he** from Chile?
 Is **it** Korean?
 Are **you** from China?
 Are **we** late?
 Are **they** in Canada?

I am.	I'm	not.
you are.	you're	not.
she is.	she's	not.
Yes, he is.	No, he's	not.
it is.	it's	not.
we are.	we're	not.
you are.	you're	not.
they are.	they're	not.

Om **A** Complete the conversations. Then practice with a partner.

- A: Hiroshi, are you and Maiko from Japan?
 B: Yes, we are.
 A: Oh? Are you from Tokyo?
 B: No, I am not. I am from Kyoto.
- A: Is Laura from the U.S.?
 B: No, she's not. She's from the U.K.
 A: Is she from London?
 B: Yes, she is. But her parents are from Italy. They not from the U.K. originally.
 A: Is Laura's first language Italian?
 B: No, she's not. It's English.
- A: They are Selina and Carlos from Mexico?
 B: No, they are not. They from Brazil.
 A: Are you from Brazil, too?
 B: No, I am not. I'm from Peru.
 A: So, it is your first language Spanish?
 B: Yes, it is.



Om **B** Match the questions with the answers. Then practice with a partner.

- | | |
|--|---|
| 1. Are you and your family from Canada? <u>a</u> | a. No, he's not. He's from Singapore. |
| 2. Is your first language English? <u>b</u> | b. Yes, she is. She's from California. |
| 3. Are you Japanese? <u>c</u> | c. No, it's not. It's Japanese. |
| 4. Is Mr. Ho from Hong Kong? <u>d</u> | d. No, we're not. We're from Australia. |
| 5. Is your mother from the U.S.? <u>e</u> | e. Yes, we are. We're from Kyoto. |

C PAIR WORK Write five questions like the ones in part B. Then ask and answer your questions with a partner.

2.4.- Wh-questions with be

Wh-questions with be

What's your name?

My name is Jill.

Where are you from?

I'm from Canada.

How are you today?

I'm just fine.

Who's that?

He's my brother.

How old is he?

He's twenty-one.

What's he like?

He's very nice.

Who's = Who is

Who are they?

They're my classmates.

Where are they from?

They're from Rio.

What's Rio like?

It's very beautiful.

A Complete the conversations with Wh-questions. Then practice with a partner.

- A: Look! Who's that ?
B: Oh, he's a new student.
A: What is his name?
B: I think his name is Ming.
A: Ming? Where is he from ?
B: He's from China.
- A: Serhat, where are you from ?
B: I'm from Turkey - from Istanbul.
A: What's it like ?
B: Istanbul is very old and beautiful.
A: What is your last name?
B: My last name is Erdogan.
- A: Hi, John. How are you ?
B: I'm just fine. My friend Teresa is here this week - from Argentina.
A: Oh, cool. What's she like ?
B: She's really friendly.
A: How old is she ?
B: She's twenty-eight years old.

