



Briana Jiménez Ortiz

Rafael Ivan Guillén Alcalá.

Tríptico: Travel around the world.

Inglés I.

Grado: 1

Grupo: "A"

Comitán de Domínguez Chiapas a 13 de octubre de 2023.

PARIS.



WHERE IS THE LOCATED?

Paris is located in the north of France, in the center of the Parisian basin. The city is crossed by the Seine River.

HOW IS THE CLIMB?

The climate in Paris is usually considered somewhat indefinite, but located within the semi-continental oceanic climate, or also called the transitional climate because it is located somewhat far from the coast.

WHAT IS THE TORRE EIFFEL?

It is a powerful and distinctive symbol of the city of Paris and, by extension, of France.

The Eiffel Tower sometimes turns off at night, in tribute to the victims of dramatic events that may occur in the world.



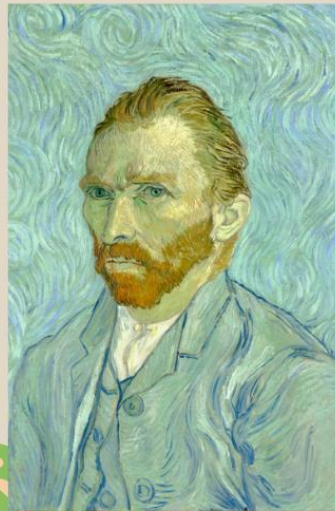
WHY IS THE EIFFEL TOWER SHAPED LIKE AN A?

Two engineers from Gustave Eiffel's company imagined a 300-meter metal tower in 1884 for the 1889 World's Fair in Paris.

These engineers were specialized in large metal structures such as bridges, railway stations, viaducts, etc. Naturally, the first sketch of the 300-meter Tower, based on the calculations of said engineers, shows a pillar with 4 legs each formed by 4 robust beams connected to each other by lattice joists that rise obliquely to meet at the top. .

WHO IS FAMOUS IN PARIS?

Vincent Van Gogh (1853–1890) Dutch painter spent most of his life in Arles and Saint Rémy de Provence where there are two museums with his work and where you can make routes to follow his steps through the magnificent landscapes of Provence.



WHEN IS THE FRENCH NATIONAL HOLIDAY

July 14 is the holiday dedicated to the French national holiday. Established in 1880, this date commemorates at the same time the Fall of the Bastille on July 14, 1789, which marks the end of the absolute monarchy, and the Feast of the Federation on July 14, 1790.

