

2.2.- Negative and Questions with be **Architecture**

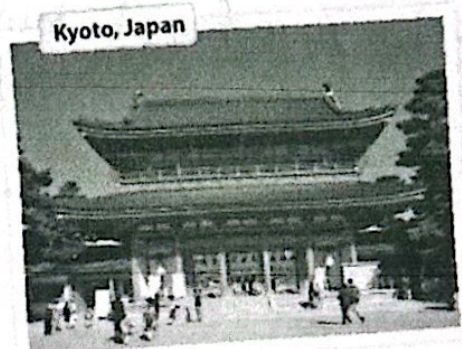
**Negative statements and yes/no questions with be**

I'm <b>not</b> from New York.	<b>Are you</b> from California?	I <b>am</b> .	I'm <b>not</b> .
You're <b>not</b> late.	<b>Am I</b> early?	<b>you are</b> .	<b>you're not</b> .
<b>She's not</b> from Russia.	<b>Is she</b> from Brazil?	<b>she is</b> .	<b>she's not</b> .
<b>He's not</b> from Italy.	<b>Is he</b> from Chile?	Yes, <b>he is</b> .	No, <b>he's not</b> .
<b>It's not</b> English.	<b>Is it</b> Korean?	<b>it is</b> .	<b>it's not</b> .
<b>We're not</b> from Japan.	<b>Are you</b> from China?	<b>we are</b> .	<b>we're not</b> .
<b>You're not</b> early.	<b>Are we</b> late?	<b>you are</b> .	<b>you're not</b> .
<b>They're not</b> in Mexico.	<b>Are they</b> in Canada?	<b>they are</b> .	<b>they're not</b> .

We're = We are

**A** Complete the conversations. Then practice with a partner.

- A: Hiroshi, are you and Maiko from Japan?  
 B: Yes, we are.  
 A: Oh? are you from Tokyo?  
 B: No, I am not. I am from Kyoto.
- A: is Laura from the U.S.?  
 B: No, she is not. She's from the U.K.  
 A: is she from London?  
 B: Yes, she is. But her parents are from Italy. you're not from the U.K. originally.  
 A: is Laura's first language Italian?  
 B: No, she is not. she is English.
- A: is Selina and Carlos from Mexico?  
 B: No, they are not. they are from Brazil.  
 A: are you from Brazil, too?  
 B: No, I am not. I'm from Peru.  
 A: So, is your first language Spanish?  
 B: Yes, it is.



**B** Match the questions with the answers. Then practice with a partner.

- |  |   |
|--|---|
| 1. Are you and your family from Canada? <u>d</u> | a. No, he's not. He's from Singapore.   |
| 2. Is your first language English? <u>c</u>      | b. Yes, she is. She's from California.  |
| 3. Are you Japanese? <u>e</u>                    | c. No, it's not. It's Japanese.         |
| 4. Is Mr. Ho from Hong K ng? <u>a</u>            | d. No, we're not. We're from Australia. |
| 5. Is your mother from the U.S.? <u>b</u>        | e. Yes, we are. We're from Kyoto.       |

**C PAIR WORK** Write five questions like the ones in part B. Then ask and answer your questions with a partner.



A - are you from Guatemala?

G - No, I am not, I am from Brazil

A - oh! are you from Rio de Janeiro?

G - yes, I am Rio de Janeiro, are you from Brazil, too?

A - No I am not. I am from Spain

G - oh!, are you from Madrid?

A - yes, I am from Madrid

G - is your first language Spanish?

A - yes, it is.



## 1 Negative statements and yes/no questions with be

- ▶ Use *be* + *not* to form negative statements: Ana **isn't** a student. (NOT: ~~Ana is no a student.~~)
- ▶ *You* is a singular and a plural pronoun: Are **you** from Rio? Yes, I am./Yes, **we** are.

### A Unscramble the words to write negative statements.

1. in California / not / New York City / is  
New York City is not in California.
2. London / not / from / we're  
We're not from London.
3. not / you and Tim / in my class / are  
You and Tim are not in my class.
4. is / my first language / Spanish / not  
My first language is not Spanish.
5. from / my mother / not / is / Seoul  
My mother is not from Seoul.
6. my keys / not / are / they  
My keys are not there.

### B Complete the conversations.

1. A: Are you and your family from Mexico?  
B: No, you're not. You're from Guatemala.
2. A: Are your first language English?  
B: Yes, it is. My parents is from Australia.
3. A: Is Kenji and his friend Japanese?  
B: Yes, you are. But is in the U.S. now.
4. A: Is my mother and I late?  
B: No, is not. is early!



2.2.- Where are they from?

**WHERE ARE THEY FROM?**

A Where are these people from? Check (✓) your guesses.



**Penelope Cruz**  
 Mexico  
 France  
 Spain



**Robert Pattinson**  
 the U.S.  
 the U.K.  
 Canada



**Haru Nomura**  
 South Korea  
 Japan  
 China



**Cate Blanchett**  
 Australia  
 New Zealand  
 South Africa



**Javier Hernández**  
 Brazil  
 Mexico  
 Chile

B PAIR WORK Compare your guesses. Then check your answers at the bottom of the page.

A: Is Penelope Cruz from Mexico?  
 B: No, she's not.  
 A: Is she from France?

Answers: 1. Spain 2. the U.K. 3. Japan 4. Australia 5. Mexico

**CONVERSATION** *He's cute.*

Listen and practice.

Emma: Who's that?  
 Jill: He's my brother.  
 Emma: Wow! He's cute. What's his name?  
 Jill: James. We call him Jim.  
 Emma: Oh, how old is he?  
 Jill: He's twenty-one years old.  
 Emma: What's he like? Is he nice?  
 Jill: Yes, he is – and he's very smart, too!  
 Emma: And who's that?  
 Jill: My sister Tammy. She's only twelve. She's the baby of the family.





## 2.4.- Wh-questions with be

### Wh-questions with be

**What's your name?**

My name is Jill.

**Where are you from?**

I'm from Canada.

**How are you today?**

I'm just fine.

**Who's that?**

He's my brother.

**How old is he?**

He's twenty-one.

**What's he like?**

He's very nice.

Who's = Who is

**Who are they?**

They're my classmates.

**Where are they from?**

They're from Rio.

**What's Rio like?**

It's very beautiful.

**A** Complete the conversations with Wh-questions. Then practice with a partner.

- A: Look! Who's that ?

B: Oh, he's a new student.

A: What's her name?

B: I think his name is Ming.

A: Ming? Where are he from?

B: He's from China.
- A: Serhat, Where are you from?

B: I'm from Turkey - from Istanbul.

A: What's Istanbul like?

B: Istanbul is very old and beautiful.

A: What's your last name?

B: My last name is Erdogan.
- A: Hi, John. How are you today?

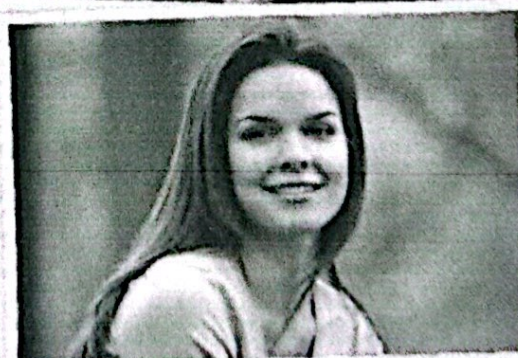
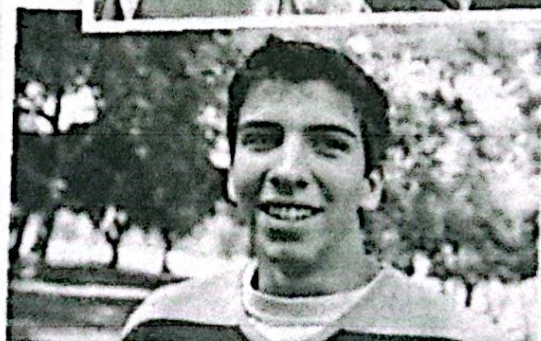
B: I'm just fine. My friend Teresa is here this week - from Argentina.

A: Oh, cool. What's she like?

B: She's really friendly.

A: How old is she?

B: She's twenty-eight years old.





2.3.- Numbers and Ages

**NUMBERS AND AGES**

A Listen and practice.

- |              |                 |                             |
|--------------|-----------------|-----------------------------|
| 11 eleven    | 21 twenty-one   | 40 forty                    |
| 12 twelve    | 22 twenty-two   | 50 fifty                    |
| 13 thirteen  | 23 twenty-three | 60 sixty                    |
| 14 fourteen  | 24 twenty-four  | 70 seventy                  |
| 15 fifteen   | 25 twenty-five  | 80 eighty                   |
| 16 sixteen   | 26 twenty-six   | 90 ninety                   |
| 17 seventeen | 27 twenty-seven | 100 one hundred             |
| 18 eighteen  | 28 twenty-eight | 101 one hundred (and) one   |
| 19 nineteen  | 29 twenty-nine  | 102 one hundred (and) two   |
| 20 twenty    | 30 thirty       | 103 one hundred (and) three |

B Listen and practice. Notice the word stress.

- |                   |                  |                 |                 |
|-------------------|------------------|-----------------|-----------------|
| thirteen - thirty | fourteen - forty | fifteen - fifty | sixteen - sixty |
|-------------------|------------------|-----------------|-----------------|

C **PAIR WORK** Look at the people in Jill's family for one minute. Then close your books. How old are they? Tell your partner.



A. Helen - 76  
- seventy six



B. Howard - 52  
- Fifty two



C. Jackie - 49  
- Forty nine



D. Megan - 23  
- twenty three



E. Tim and Tom - 14  
- fourteen




2 Wh-questions with be

- ▶ Use *what* to ask about things. Use *where* to ask about places. Use *Who* to ask about people. Use *What ... like?* to ask for a description.
- ▶ Use *how* to ask for a description: **How** are you today? Use *How old* to ask about age: **How old** is he?
- ▶ In answers about age, you can use only the number or the number + *years old*: He's **18**. OR He's **18 years old**.

Complete the questions with *how, what, where, or who*. Then match the questions with the answers.

- |  |  |
|--|--|
| 1. .... <i>Who</i> ..... is that? .... <i>d</i> ....               | a. We're from Thailand – from Bangkok. |
| 2. .... <i>What</i> ..... is her name? .... <i>c</i> ....          | b. She's 16.                           |
| 3. .... <i>What</i> ..... is she like? .... <i>f</i> ....          | c. Her name is Nittaya.                |
| 4. .... <i>How</i> ..... old is she? .... <i>b</i> ....            | d. She's my sister.                    |
| 5. .... <i>Where</i> ..... is your family from? .... <i>a</i> .... | e. It's really beautiful.              |
| 6. .... <i>What</i> ..... is Bangkok like? .... <i>e</i> ....      | f. She's a little shy.                 |

**WORD POWER** Descriptions

A  Listen and practice.



- |                 |              |            |             |         |
|-----------------|--------------|------------|-------------|---------|
| a. pretty       | d. talkative | g. serious | j. tall     | m. thin |
| b. handsome     | e. quiet     | h. shy     | k. friendly |         |
| c. good-looking | f. funny     | i. short   | l. heavy    |         |