

2.2.- Negative and Questions with be

Negative statements and yes/no questions with be

I'm not from New York.
 You're not late.
 She's not from Russia.
 He's not from Italy.
 It's not English.
 We're not from Japan.
 You're not early.
 They're not in Mexico.

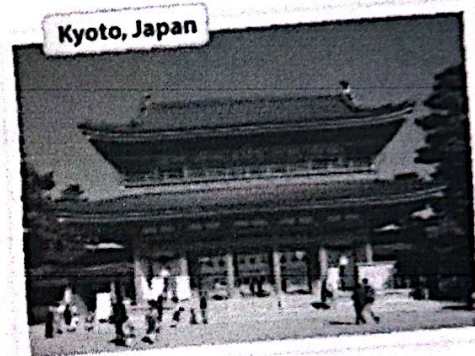
Are you from California?
 Am I early?
 Is she from Brazil?
 Is he from Chile?
 Is it Korean?
 Are you from China?
 Are we late?
 Are they in Canada?

I am.	I'm	not.
you are.	you're	not.
she is.	she's	not.
Yes, he is.	No, he's	not.
it is.	it's	not.
we are.	we're	not.
you are.	you're	not.
they are.	they're	not.

We're = We are

A Complete the conversations. Then practice with a partner.

- A: Hiroshi, are you and Maiko from Japan?
 B: Yes, we are.
 A: Oh? Are you from Tokyo?
 B: No, I am not. I am from Kyoto.
- A: Is Laura from the U.S.?
 B: No, she is not. She's from the U.K.
 A: Is she from London?
 B: Yes, she is. But her parents are from Italy. They are not from the U.K. originally.
 A: Is Laura's first language Italian?
 B: No, she is not. she is English.
- A: Is Selina and Carlos from Mexico?
 B: No, they are not. They are from Brazil.
 A: Are you from Brazil, too?
 B: No, I am not. I'm from Peru.
 A: So, is your first language Spanish?
 B: Yes, it is.



B Match the questions with the answers. Then practice with a partner.

- | | |
|--|---|
| 1. Are you and your family from Canada? <u>d</u> | a. No, he's not. He's from Singapore. |
| 2. Is your first language English? <u>e</u> | b. Yes, she is. She's from California. |
| 3. Are you Japanese? <u>e</u> | c. No, it's not. It's Japanese. |
| 4. Is Mr. Ho from Hong Kong? <u>a</u> | d. No, we're not. We're from Australia. |
| 5. Is your mother from the U.S.? <u>b</u> | e. Yes, we are. We're from Kyoto. |

C PAIR WORK Write five questions like the ones in part B. Then ask and answer your questions with a partner.

Jose Gabriel Mérida Nájera

200

A- Are you from Guatemala?

G- No I am not, I am from Brazil

A- Oh, are you from Rio de Janeiro?

G- Yes, I am from Rio de Janeiro, are you from Brazil, too?

A- No I am not, I am from Spain

G- Oh, are you from Madrid?

A- Yes, I am from Madrid.

G- Is your first language Spanish?

A- Yes, it is.

1 Negative statements and yes/no questions with be

- ▶ Use *be* + *not* to form negative statements: Ana ~~isn't~~ a student. (NOT: ~~Ana is no~~ a student.)
- ▶ *You* is a singular and a plural pronoun: Are *you* from Rio? Yes, I am./Yes, we are.

A Unscramble the words to write negative statements.

1. in California / not / New York City / is
New York City is not in California.
2. London / not / from / we're
we're not from London.
3. not / you and Tim / in my class / are
you and Tim are not in my class.
4. is / my first language / Spanish / not
My first language is not Spanish.
5. from / my mother / not / is / Seoul
My mother is not from Seoul.
6. my keys / not / are / they
My keys are not there.

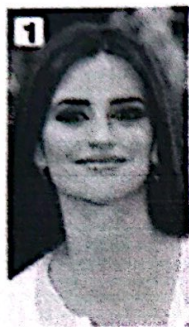
B Complete the conversations.

1. A: Are you and your family from Mexico?
B: No, our not. our from Guatemala.
2. A: Are your first language English?
B: Yes, it is. My parents is from Australia.
3. A: is Kenji and his friend Japanese?
B: Yes, you are. But is in the U.S. now.
4. A: is my mother and I late?
B: No, is not. is early!

2.2.- Where are they from?

WHERE ARE THEY FROM?

A Where are these people from? Check (✓) your guesses.



Penelope Cruz

- Mexico
- France
- Spain

Robert Pattinson

- the U.S.
- the U.K.
- Canada

Haru Nomura

- South Korea
- Japan
- China

Cate Blanchett

- Australia
- New Zealand
- South Africa

Javier Hernández

- Brazil
- Mexico
- Chile

B PAIR WORK Compare your guesses. Then check your answers at the bottom of the page.

A: Is Penelope Cruz from Mexico?

B: No, she's not.

A: Is she from France?

Answers: 1. Spain 2. the U.K. 3. Japan 4. Australia 5. Mexico

CONVERSATION He's cute.

🎧 Listen and practice.

Emma: Who's that?

Jill: He's my brother.

Emma: Wow! He's cute. What's his name?

Jill: James. We call him Jim.

Emma: Oh, how old is he?

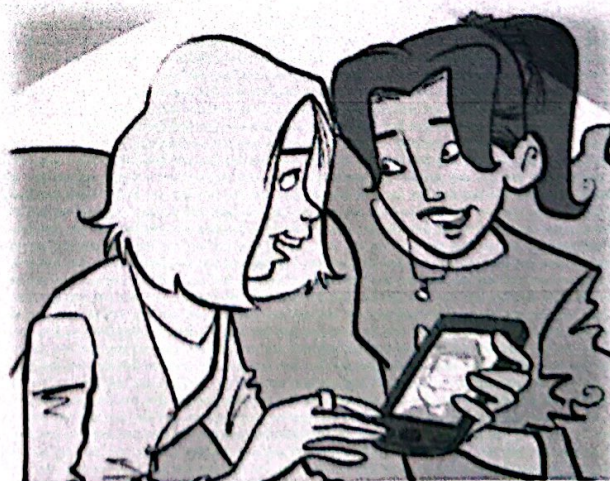
Jill: He's twenty-one years old.

Emma: What's he like? Is he nice?

Jill: Yes, he is - and he's very smart, too!

Emma: And who's that?

Jill: My sister Tammy. She's only twelve. She's the baby of the family.



2.3.- Numbers and Ages

NUMBERS AND AGES

A Listen and practice.

- | | | |
|--------------|-----------------|-----------------------------|
| 11 eleven | 21 twenty-one | 40 forty |
| 12 twelve | 22 twenty-two | 50 fifty |
| 13 thirteen | 23 twenty-three | 60 sixty |
| 14 fourteen | 24 twenty-four | 70 seventy |
| 15 fifteen | 25 twenty-five | 80 eighty |
| 16 sixteen | 26 twenty-six | 90 ninety |
| 17 seventeen | 27 twenty-seven | 100 one hundred |
| 18 eighteen | 28 twenty-eight | 101 one hundred (and) one |
| 19 nineteen | 29 twenty-nine | 102 one hundred (and) two |
| 20 twenty | 30 thirty | 103 one hundred (and) three |

B Listen and practice. Notice the word stress.

- | | | | |
|-------------------|------------------|-----------------|-----------------|
| thirteen - thirty | fourteen - forty | fifteen - fifty | sixteen - sixty |
|-------------------|------------------|-----------------|-----------------|

C **PAIR WORK** Look at the people in Jill's family for one minute. Then close your books. How old are they? Tell your partner.



A. Helen - 76
seventy six



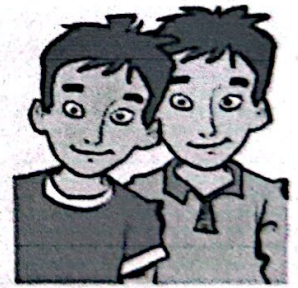
B. Howard - 52
fifty two



C. Jackie - 49
forty nine



D. Megan - 23
twenty three



E. Tim and Tom - 14
fourteen

2.4.- Wh-questions with be

Wh-questions with be

What's your name?

My name is Jill.

Where are you from?

I'm from Canada.

How are you today?

I'm just fine.

Who's that?

He's my brother.

How old is he?

He's twenty-one.

What's he like?

He's very nice.

Who's = Who is

Who are they?

They're my classmates.

Where are they from?

They're from Rio.

What's Rio like?

It's very beautiful.

A Complete the conversations with Wh-questions. Then practice with a partner.

- A: Look! Who's that ?

B: Oh, he's a new student.

A: What is her name ?

B: I think his name is Ming.

A: Ming? Where is he from ?

B: He's from China.
- A: Serhat, where are you from ?

B: I'm from Turkey - from Istanbul.

A: what is Istanbul like ?

B: Istanbul is very old and beautiful.

A: what is your last name ?

B: My last name is Erdogan.
- A: Hi, John. How are you today ?

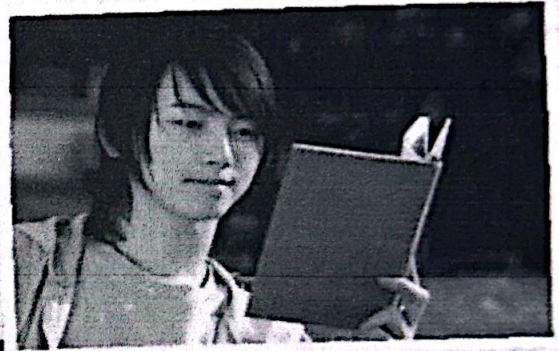
B: I'm just fine. My friend Teresa is here this week - from Argentina.

A: Oh, cool. what is she like ?

B: She's really friendly.

A: How old is she ?

B: She's twenty-eight years old.




2 Wh-questions with be

- ▶ Use *what* to ask about things. Use *where* to ask about places. Use *Who* to ask about people. Use *What... like?* to ask for a description.
- ▶ Use *how* to ask for a description: **How are you today?** Use *How old* to ask about age: **How old is he?**
- ▶ In answers about age, you can use only the number or the number + *years old*: **He's 18.** OR **He's 18 years old.**

Complete the questions with *how, what, where, or who*. Then match the questions with the answers.

- | | |
|---|--|
| 1. <u>Who</u> is that? <u>d</u> | a. We're from Thailand – from Bangkok. |
| 2. <u>What</u> is her name? <u>c</u> | b. She's 16. |
| 3. <u>What</u> is she like? <u>f</u> | c. Her name is Nittaya. |
| 4. <u>How</u> old is she? <u>b</u> | d. She's my sister. |
| 5. <u>Where</u> is your family from? <u>a</u> | e. It's really beautiful. |
| 6. <u>What</u> is Bangkok like? <u>e</u> | f. She's a little shy. |

WORD POWER Descriptions

A  Listen and practice.



- | | | | | |
|-----------------|--------------|------------|-------------|---------|
| a. pretty | d. talkative | g. serious | j. tall | m. thin |
| b. handsome | e. quiet | h. shy | k. friendly | |
| c. good-looking | f. funny | i. short | l. heavy | |