

UNIT II. WHERE ARE YOU FROM?

2.1.- Cities and Countries

1 **SNAPSHOT**

Listen and practice.

The Ten Largest Cities in the World

(based on population in the metropolitan area)

Cities	Countries
1. Tokyo	a. Brazil
2. Seoul	b. China
3. Mexico City	c. India
4. New York City	d. Indonesia
5. Mumbai	e. Japan
6. Jakarta	f. Mexico
7. São Paulo	g. South Korea
8. Delhi	h. the U.S.
9. Osaka	
10. Shanghai	

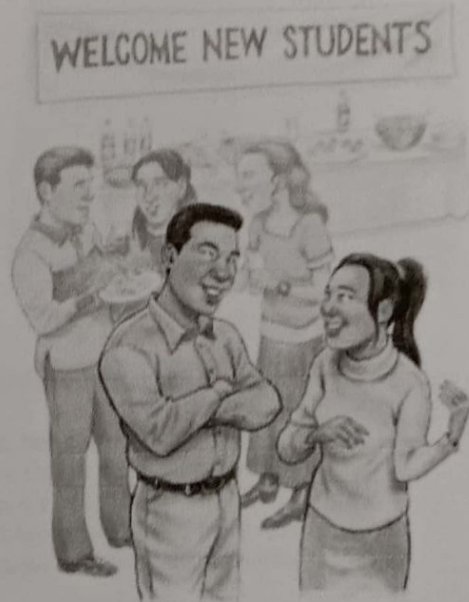
Source: www.infoplease.com

Match the cities with the countries. Then check your answers at the bottom of the Snapshot. What other large cities are in each country? What large cities are in your country?

2 **CONVERSATION** Are you from Seoul?

A Listen and practice.

Tim: Are you from California, Jessica?
 Jessica: Well, my family is in California now, but we're from South Korea originally.
 Tim: Oh, my mother is Korean – from Seoul! Are you from Seoul?
 Jessica: No, we're not. We're from Daejeon.
 Tim: So is your first language Korean?
 Jessica: Yes, it is.



B Listen to Jessica and Tim talk to Tony, Natasha, and Monique. Check (✓) True or False.

	True	False
1. Tony is from Italy	<input type="checkbox"/>	<input checked="" type="checkbox"/>
2. Natasha is from New York.	<input checked="" type="checkbox"/>	<input type="checkbox"/>
3. Monique's first language is English.	<input checked="" type="checkbox"/>	<input type="checkbox"/>

2.2.- Negative and Questions with be

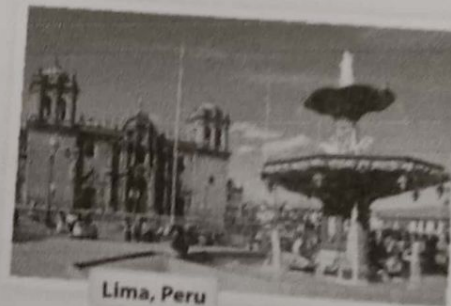
Negative statements and yes/no questions with be

I'm not from New York.	Are you from California?	I am .	I'm not
You're not late.	Am I early?	you are .	you're not
She's not from Russia.	Is she from Brazil?	she is .	she's not
He's not from Italy.	Is he from Chile?	Yes, he is .	No, he's not
It's not English.	Is it Korean?	it is .	it's not
We're not from Japan.	Are you from China?	we are .	we're not
You're not early.	Are we late?	you are .	you're not
They're not in Mexico.	Are they in Canada?	they are .	they're not

We're = We are

A Complete the conversations. Then practice with a partner.

- A: Hiroshi, are you and Maiko from Japan?
 B: Yes, we are.
 A: Oh? are you from Tokyo?
 B: No, I'm not. I am from Kyoto.
- A: is Laura from the U.S.?
 B: No, she is not. She's from the U.K.
 A: is she from London?
 B: Yes, she is. But her parents are from Italy. we are not from the U.K. originally.
 A: so Laura's first language Italian?
 B: No, she is not. it is English.
- A: are Selina and Carlos from Mexico?
 B: No, they are not. they are from Brazil.
 A: so you from Brazil, too?
 B: No, I am not. I'm from Peru.
 A: So, is your first language Spanish?
 B: Yes, it is.



B Match the questions with the answers. Then practice with a partner.

- | | |
|--|---|
| 1. Are you and your family from Canada? <u>d</u> | a. No, he's not. He's from Singapore. |
| 2. Is your first language English? <u>c</u> | b. Yes, she is. She's from California. |
| 3. Are you Japanese? <u>e</u> | c. No, it's not. It's Japanese. |
| 4. Is Mr. Ho from Hong Kong? <u>a</u> | d. No, we're not. We're from Australia. |
| 5. Is your mother from the U.S.? <u>b</u> | e. Yes, we are. We're from Kyoto. |

C PAIR WORK Write five questions like the ones in part B. Then ask and answer your questions with a partner.

1 Negative statements and yes/no questions with be

- ▶ Use *be* + *not* to form negative statements: Ana **isn't** a student. (NOT: ~~Ana is not~~ a student.)
- ▶ *You* is a singular and a plural pronoun: Are **you** from Rio? Yes, I am./Yes, **we** are.

A Unscramble the words to write negative statements.

1. in California / not / New York City / is
New York City is not in California.
2. London / not / from / we're
we're not from London
3. not / you and Tim / in my class / are
you and Tim not are in my class
4. is / my first language / Spanish / not
Spanish is not my first language
5. from / my mother / not / is / Seoul
My mother is not from Seoul
6. my keys / not / are / they
They are not my keys

B Complete the conversations.

1. A: Are you and your family from Mexico?
B: No, we are not not. we are from Guatemala.
2. A: we are not your first language English?
B: Yes, it is. My parents are from Australia.
3. A: is Kenji and his friend Japanese?
B: Yes, they are. But they in the U.S. now.
4. A: are my mother and I late?
B: No, you're not. you are early!

2.2.- Where are they from?

WHERE ARE THEY FROM?

A Where are these people from? Check (✓) your guesses.



Penelope Cruz

- Mexico
- France
- Spain

Robert Pattinson

- the U.S.
- the U.K.
- Canada

Haru Nomura

- South Korea
- Japan
- China

Cate Blanchett

- Australia
- New Zealand
- South Africa

Javier Hernández

- Brazil
- Mexico
- Chile

B PAIR WORK Compare your guesses. Then check your answers at the bottom of the page.

A: Is Penelope Cruz from Mexico?

B: No, she's not.

A: Is she from France?

Answers: 1. Spain 2. the U.K. 3. Japan 4. Australia 5. Mexico

CONVERSATION *He's cute.*

⊙ Listen and practice.

Emma: Who's that?

Jill: He's my brother.

Emma: Wow! He's cute. What's his name?

Jill: James. We call him Jim.

Emma: Oh, how old is he?

Jill: He's twenty-one years old.

Emma: What's he like? Is he nice?

Jill: Yes, he is – and he's very smart, too!

Emma: And who's that?

Jill: My sister Tammy. She's only twelve. She's the baby of the family.



2.4.- Wh-questions with be

Wh-questions with be

What's your name?

My name is Jill.

Where are you from?

I'm from Canada.

How are you today?

I'm just fine.

Who's that?

He's my brother.

How old is he?

He's twenty-one.

What's he like?

He's very nice.

Who's = Who is

Who are they?

They're my classmates.

Where are they from?

They're from Rio.

What's Rio like?

It's very beautiful.

A Complete the conversations with Wh-questions. Then practice with a partner.

- A: Look! Who's that ?

B: Oh, he's a new student.

A: What is his name?

B: I think his name is Ming.

A: Ming? Where is he from? ?

B: He's from China.
- A: Serhat, Where are you from?

B: I'm from Turkey - from Istanbul.

A: What is Istanbul like?

B: Istanbul is very old and beautiful.

A: What is your name? ?

B: My last name is Erdogan.
- A: Hi, John. How are you today?

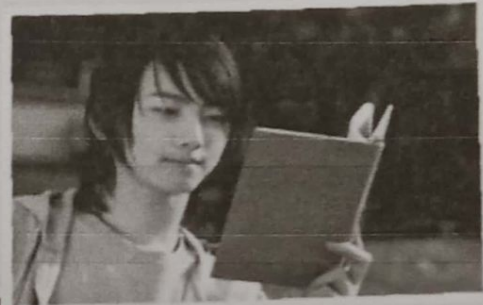
B: I'm just fine. My friend Teresa is here this week - from Argentina.

A: Oh, cool. What is she like? ?

B: She's really friendly.

A: How old is she? ?

B: She's twenty-eight years old.



2 Wh-questions with be

- ▶ Use *what* to ask about things. Use *where* to ask about places. Use *Who* to ask about people. Use *What... like?* to ask for a description.
- ▶ Use *how* to ask for a description: **How are** you today? Use *How old* to ask about age: **How old** is he?
- ▶ In answers about age, you can use only the number or the number + *years old*: He's **18**. OR He's **18 years old**.

Complete the questions with *how*, *what*, *where*, or *who*. Then match the questions with the answers.

1. Who is that? d
2. what is her name? c
3. what is she like? e
4. how old is she? b
5. where is your family from? a
6. why is Bangkok like? f

- a. We're from Thailand – from Bangkok.
- b. She's 16.
- c. Her name is Nittaya.
- d. She's my sister.
- e. It's really beautiful.
- f. She's a little shy.

WORD POWER Descriptions

A Listen and practice.



- | | | | | |
|-----------------|--------------|------------|-------------|---------|
| a. pretty | d. talkative | g. serious | j. tall | m. thin |
| b. handsome | e. quiet | h. shy | k. friendly | |
| c. good-looking | f. funny | i. short | l. heavy | |



**Nombre de alumno: Ámbar Ivette
López Suaznàvar**

**Nombre del profesor: Georgina Olivia
Vidal Alfonso**

**Nombre del trabajo: Antología
Actividades**

Materia: INGLÉS 1

Fecha: 12 de Octubre del 2023

Comitán de Domínguez Chiapas a 12 de Octubre de 2023.