

UNIT II. WHERE ARE YOU FROM?

2.1.- Cities and Countries

Sophia Litamaró González N.

Wednesday, October 11<sup>th</sup>, 2023

**1** SNAPSHOT

Listen and practice.

### The Ten Largest Cities in the World

*(based on population in the metropolitan area)*

Cities	Countries
1. Tokyo <i>e</i>	a. Brazil
2. Seoul <i>g</i>	b. China
3. Mexico City <i>f</i>	c. India
4. New York City <i>h</i>	d. Indonesia
5. Mumbai <i>c</i>	e. Japan
6. Jakarta <i>d</i>	f. Mexico
7. São Paulo <i>a</i>	g. South Korea
8. Delhi <i>e</i>	h. the U.S.
9. Osaka <i>e</i>	
10. Shanghai <i>b</i>	

Source: www.worldfact.com

Match the cities with the countries. Then check your answers at the bottom of the Snapshot. What other large cities are in each country? What large cities are in your country?

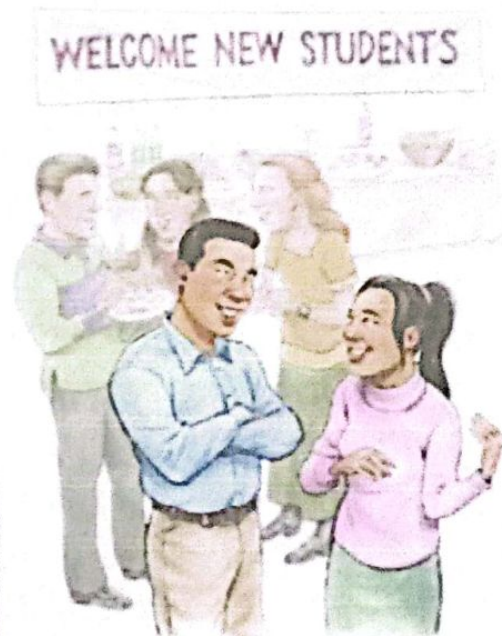
**2** CONVERSATION Are you from Seoul?

Listen and practice.

Tim: Are you from California, Jessica?  
 Jessica: Well, my family is in California now, but we're from South Korea originally.  
 Tim: Oh, my mother is Korean – from Seoul! Are you from Seoul?  
 Jessica: No, we're not. We're from Daejeon.  
 Tim: So is your first language Korean?  
 Jessica: Yes, it is.

Listen to Jessica and Tim talk to Tony, Natasha, and Monique. Check (✓) True or False.

	True	False
1. Tony is from Italy	<input type="checkbox"/>	<input type="checkbox"/>
2. Natasha is from New York	<input type="checkbox"/>	<input type="checkbox"/>
3. Monique's first language is English.	<input type="checkbox"/>	<input type="checkbox"/>



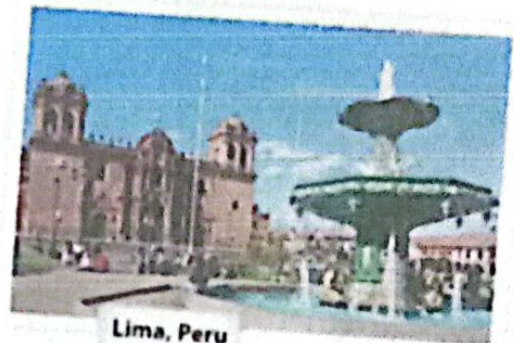
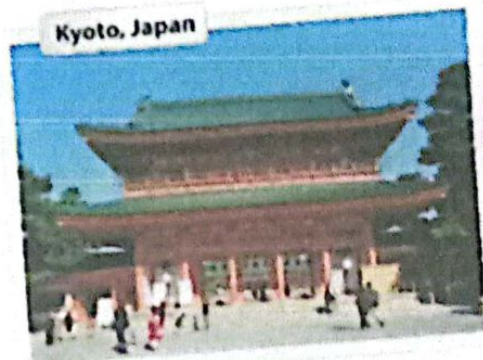
## 2.2.- Negative and Questions with be

### Negative statements and yes/no questions with be

I'm <b>not</b> from New York.	<b>Are you</b> from California?	<b>I am</b>	<b>I'm</b>	<b>not</b>
<b>You're not</b> late	<b>Am I</b> early?	<b>you are</b>	<b>you're</b>	<b>not</b>
<b>She's not</b> from Russia.	<b>Is she</b> from Brazil?	<b>she is</b>	<b>she's</b>	<b>not</b>
<b>He's not</b> from Italy.	<b>Is he</b> from Chile?	Yes, <b>he is</b>	No, <b>he's</b>	<b>not</b>
<b>It's not</b> English.	<b>Is it</b> Korean?	<b>it is</b>	<b>it's</b>	<b>not</b>
<b>We're not</b> from Japan.	<b>Are you</b> from China?	<b>we are</b>	<b>we're</b>	<b>not</b>
<b>You're not</b> early	<b>Are we</b> late?	<b>you are</b>	<b>you're</b>	<b>not</b>
<b>They're not</b> in Mexico.	<b>Are they</b> in Canada?	<b>they are</b>	<b>they're</b>	<b>not</b>
We're = We are				

**A** Complete the conversations. Then practice with a partner.

- A: Hiroshi, are you and Maiko from Japan?  
 B: Yes, we are.  
 A: Oh? are you from Tokyo?  
 B: No, are not. I'm from Kyoto.
- A: is Laura from the U.S.?  
 B: No, she is not. She's from the U.K.  
 A: is she from London?  
 B: Yes, she is. But her parents are from Italy. They're not from the U.K. originally.  
 A: is Laura's first language Italian?  
 B: No, she is not. she's English.
- A: is Selina and Carlos from Mexico?  
 B: No, They're not. They're from Brazil.  
 A: are you from Brazil, too?  
 B: No, I am not. I'm from Peru.  
 A: So, is your first language Spanish?  
 B: Yes, it is.



**B** Match the questions with the answers. Then practice with a partner.

- |  |  |
|--|--|
| 1. Are you and your family from Canada? <u>d</u> | ✓ No, he's not. He's from Singapore.   |
| 2. Is your first language English? <u>c</u>      | ✓ Yes, she is. She's from California.  |
| 3. Are you Japanese? <u>e</u>                    | ✓ No, it's not. It's Japanese.         |
| 4. Is Mr. Ho from Hong Kong? <u>a</u>            | ✓ No, we're not. We're from Australia. |
| 5. Is your mother from the U.S.? <u>b</u>        | ✓ Yes, we are. We're from Kyoto.       |

**C PAIR WORK** Write five questions like the ones in part B. Then ask and answer your questions with a partner.

**1 Negative statements and yes/no questions with be**

- ▶ Use *be* + *not* to form negative statements: Ana **isn't** a student. (NOT: Ana is ne a student.)
- ▶ *You* is a singular and a plural pronoun: Are **you** from Rio? Yes, I am./Yes, **we** a

**A** Unscramble the words to write negative statements.

1. in California / not / New York City / is  
New York City is not in California.
2. London / not / from / we're  
We're not from London.
3. not / you and Tim / in my class / are  
You and Tim are not in my class.
4. is / my first language / Spanish / not  
my first language is not Spanish.
5. from / my mother / not / is / Seoul  
my mother is not from Seoul.
6. my keys / not / are / they  
they are not my keys.

**B** Complete the conversations.

1. A: Are you and your family from Mexico?  
B: No, we are not. We're from Guatemala.
2. A: are your first language English?  
B: Yes, it is. My parents They are from Australia.
3. A: is Kenji and his friend Japanese?  
B: Yes, They are. But They live in the U.S. now.
4. A: is my mother and I late?  
B: No, you are not. you're early!

## 2.2.- Where are they from?

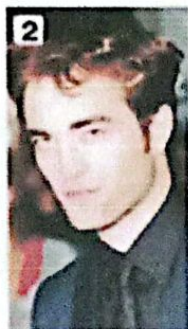
### WHERE ARE THEY FROM?

**A** Where are these people from? Check (✓) your guesses.



**1 Penelope Cruz**

- Mexico
- France
- Spain



**2 Robert Pattinson**

- the U.S.
- the U.K.
- Canada



**3 Haru Nomura**

- South Korea
- Japan
- China



**4 Cate Blanchett**

- Australia
- New Zealand
- South Africa



**5 Javier Hernández**

- Brazil
- Mexico
- Chile

34/95



**B PAIR WORK** Compare your guesses. Then check your answers at the bottom of the page.

A: Is Penelope Cruz from Mexico?

B: No, she's not.

A: Is she from France?

No, she is from Spain.

Answers: 1 Spain 2 the U.K. 3 Japan 4 Australia 5 Mexico

### CONVERSATION *He's cute.*

**A** Listen and practice.

Emma: Who's that?

Jill: He's my brother.

Emma: Wow! He's cute. What's his name?

Jill: James. We call him Jim.

Emma: Oh, how old is he?

Jill: He's twenty-one years old.

Emma: What's he like? Is he nice?

Jill: Yes, he is – and he's very smart, too!


Emma: And who's that?

Jill: My sister Tammy. She's only twelve. She's the baby of the family.




2.3.- Numbers and Ages

**NUMBERS AND AGES**

**A**  Listen and practice.

- |              |                 |                             |
|--------------|-----------------|-----------------------------|
| 11 eleven    | 21 twenty-one   | 40 forty                    |
| 12 twelve    | 22 twenty-two   | 50 fifty                    |
| 13 thirteen  | 23 twenty-three | 60 sixty                    |
| 14 fourteen  | 24 twenty-four  | 70 seventy                  |
| 15 fifteen   | 25 twenty-five  | 80 eighty                   |
| 16 sixteen   | 26 twenty-six   | 90 ninety                   |
| 17 seventeen | 27 twenty-seven | 100 one hundred             |
| 18 eighteen  | 28 twenty-eight | 101 one hundred (and) one   |
| 19 nineteen  | 29 twenty-nine  | 102 one hundred (and) two   |
| 20 twenty    | 30 thirty       | 103 one hundred (and) three |

**B**  Listen and practice. Notice the word stress.

 thirteen - thirty

 fourteen - forty

 fifteen - fifty

 sixteen - sixty

**C PAIRWORK** Look at the people in Jill's family for one minute. Then close your books. How old are they? Tell your partner.



A. Helen - 76



B. Howard - 52



C. Jackie - 49



D. Megan - 23



E. Tim and Tom -

## 2.4.- Wh-questions with be

### Wh-questions with be

**What's your name?**

My name is Jill.

**Where are you from?**

I'm from Canada.

**How are you today?**

I'm just fine.

**Who's that?**

He's my brother.

**How old is he?**

He's twenty-one.

**What's he like?**

He's very nice.

Who's = Who is

**Who are they?**

They're my classmates.

**Where are they from?**

They're from Rio.

**What's Rio like?**

It's very beautiful.

**A** Complete the conversations with Wh-questions. Then practice with a partner.

- A: Look! Who's that ?

B: Oh, he's a new student.

A: What is his name?

B: I think his name is Ming.

A: Ming? Where is he from?

B: He's from China.
- A: Serhat, Where are you from?

B: I'm from Turkey - from Istanbul.

A: Who is it, Istanbul?

B: Istanbul is very old and beautiful.

A: What is your last name?

B: My last name is Erdogan.
- A: Hi, John. Who are you?

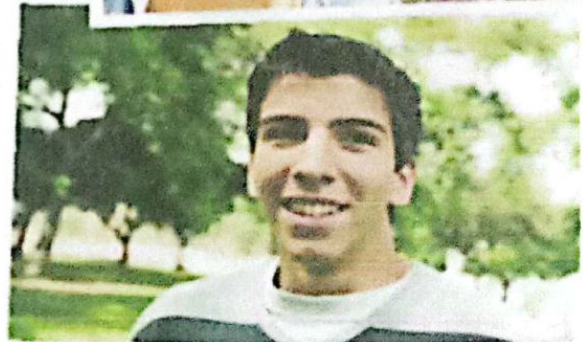
B: I'm just fine. My friend Teresa is here this week - from Argentina.

A: Oh, cool. Who is she?

B: She's really friendly.

A: How old is she?

B: She's twenty-eight years old.



**2 Wh-questions with be**

- ▶ Use *what* to ask about things. Use *where* to ask about places. Use *Who* to ask about people. Use *What ... like?* to ask for a description.
- ▶ Use *how* to ask for a description: **How are you** today? Use *How old* to ask about age: **How old** is he?
- ▶ In answers about age, you can use only the number or the number + *years old*. He's **18**, or He's **18 years old**.

Complete the questions with *how, what, where, or who*. Then match the question with the answers.

- |   |  |
|---|--|
| 1. .... <i>Who</i> .... is that? .... <i>d</i> ....               | a. We're from Thailand – from Bangkok. |
| 2. .... <i>what</i> .... is her name? .... <i>c</i> ....          | b. She's 16.                           |
| 3. .... <i>Who</i> .... is she like? .... <i>f</i> ....           | c. Her name is Nittaya.                |
| 4. .... <i>What</i> .... old is she? .... <i>b</i> ....           | d. She's my sister.                    |
| 5. .... <i>where</i> .... is your family from? .... <i>a</i> .... | e. It's really beautiful.              |
| 6. .... <i>how</i> .... is Bangkok like? .... <i>e</i> ....       | f. She's a little shy.                 |

**WORD POWER** Descriptions

**A** Listen and practice.



- |                 |              |            |             |         |
|-----------------|--------------|------------|-------------|---------|
| a. pretty       | d. talkative | g. serious | j. tall     | m. thin |
| b. handsome     | e. quiet     | h. shy     | k. friendly |         |
| c. good-looking | f. funny     | i. short   | l. heavy    |         |