

UNIT II. WHERE ARE YOU FROM?

2.1.- Cities and Countries

1 **SNAPSHOT**

○ Listen and practice.

The Ten Largest Cities in the World
(based on population in the metropolitan area)

Cities	Countries
1. Tokyo	a. Brazil
2. Seoul	b. China
3. Mexico City	c. India
4. New York City	d. Indonesia
5. Mumbai	e. Japan
6. Jakarta	f. Mexico
7. São Paulo	g. South Korea
8. Delhi	h. the U.S.
9. Osaka	
10. Shanghai	

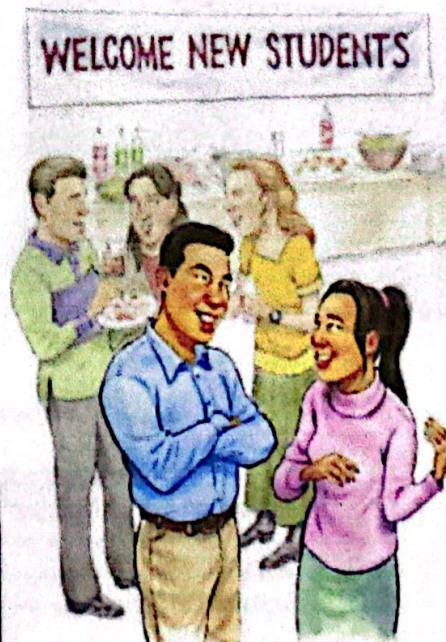
Source: www.worldatlas.com

Match the cities with the countries. Then check your answers at the bottom of the Snapshot.
 What other large cities are in each country? What large cities are in your country?

2 **CONVERSATION** Are you from Seoul?

A ○ Listen and practice.

Tim: Are you from California, Jessica?
 Jessica: Well, my family is in California now, but we're from South Korea originally.
 Tim: Oh, my mother is Korean - from Seoul! Are you from Seoul?
 Jessica: No, we're not. We're from Daejeon.
 Tim: So is your first language Korean?
 Jessica: Yes, it is.



B ○ Listen to Jessica and Tim talk to Tony, Natasha, and Monique. Check (✓) True or False.

	True	False
1. Tony is from Italy.	<input checked="" type="checkbox"/>	<input type="checkbox"/>
2. Natasha is from New York.	<input type="checkbox"/>	<input checked="" type="checkbox"/>
3. Monique's first language is English.	<input checked="" type="checkbox"/>	<input type="checkbox"/>

2.2.- Negative and Questions with be

Negative statements and yes/no questions with be

I'm not from New York.
 You're not late.
 She's not from Russia.
 He's not from Italy.
 It's not English.
 We're not from Japan.
 You're not early.
 They're not in Mexico.

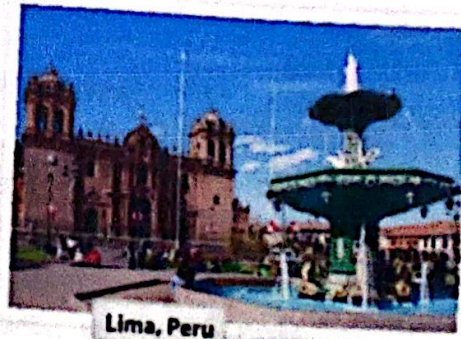
Are you from California?
 Am I early?
 Is she from Brazil?
 Is he from Chile?
 Is it Korean?
 Are you from China?
 Are we late?
 Are they in Canada?

I am.	I'm	not.
you are.	you're	not.
she is.	she's	not.
Yes, he is.	No, he's	not.
it is.	it's	not.
we are.	we're	not.
you are.	you're	not.
they are.	they're	not.

We're = We are

Complete the conversations. Then practice with a partner.

- A: Hiroshi, are you and Maiko from Japan?
 B: Yes, we are.
 A: Oh? are you from Tokyo?
 B: No, We're not. We are from Kyoto.
- A: is Laura from the U.S.?
 B: No, she not. She's from the U.K.
 A: is she from London?
 B: Yes, she is. But her parents are from Italy. She is not from the U.K. originally.
 A: is Laura's first language Italian?
 B: No, she not. she's English.
- A: Are Selina and Carlos from Mexico?
 B: No, we're not. She is from Brazil.
 A: is you from Brazil, too?
 B: No, i'm not. I'm from Peru.
 A: So, Are your first language Spanish?
 B: Yes, it is.



Match the questions with the answers. Then practice with a partner.

- | | |
|--|---|
| 1. Are you and your family from Canada? <u>d</u> | a No, he's not. He's from Singapore. |
| 2. Is your first language English? <u>c</u> | b Yes, she is. She's from California. |
| 3. Are you Japanese? <u>e</u> | c No, it's not. It's Japanese. |
| 4. Is Mr. Ho from Hong Kong? <u>a</u> | d No, we're not. We're from Australia. |
| 5. Is your mother from the U.S.? <u>b</u> | e. Yes, we are. We're from Kyoto. |

C PAIR WORK Write five questions like the ones in part B. Then ask and answer your questions with a partner.

1 Negative statements and yes/no questions with be

- ▶ Use *be* + *not* to form negative statements: Ana **isn't** a student. (NOT: ~~Ana is no~~ a student.)
- ▶ *You* is a singular and a plural pronoun: Are **you** from Rio? Yes, I am./Yes, **we** are.

A Unscramble the words to write negative statements.

1. in California / not / New York City / is
New York City is not in California.
2. London / not / from / we're
we're not from London
3. not / you and Tim / in my class / are
you and Tim are not in my class
4. is / my first language / Spanish / not
Spanish is not my first language
5. from / my mother / not / is / Seoul
My mother is not from Seoul
6. my keys / not / are / they
They are not my keys

B Complete the conversations.

1. A: Are you and your family from Mexico?
B: No, we're not. we are from Guatemala.
2. A: is your first language English?
B: Yes, it is. My parents are from Australia.
3. A: Are Kenji and his friend Japanese?
B: Yes, they are. But they are in the U.S. now.
4. A: Are my mother and I late?
B: No, we're not. we are early!

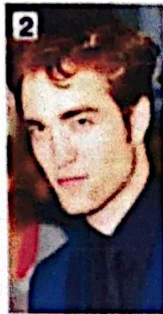
2.2.- Where are they from?

WHERE ARE THEY FROM?

A Where are these people from? Check (✓) your guesses.



- Penelope Cruz**
- Mexico
 - France
 - Spain



- Robert Pattinson**
- the U.S.
 - the U.K.
 - Canada



- Haru Nomura**
- South Korea
 - Japan
 - China



- Cate Blanchett**
- Australia
 - New Zealand
 - South Africa



- Javier Hernández**
- Brazil
 - Mexico
 - Chile

B PAIR WORK Compare your guesses. Then check your answers at the bottom of the page.

- A: Is Penelope Cruz from Mexico?
 B: No, she's not.
 A: Is she from France?

Answers: 1. Spain 2. the U.K. 3. Japan 4. Australia 5. Mexico

CONVERSATION *He's cute.*


ⓐ Listen and practice.

- Emma: Who's that?
 Jill: He's my brother.
 Emma: Wow! He's cute. What's his name?
 Jill: James. We call him Jim.
 Emma: Oh, how old is he?
 Jill: He's twenty-one years old.
 Emma: What's he like? Is he nice?
 Jill: Yes, he is – and he's very smart, too!
 Emma: And who's that?
 Jill: My sister Tammy. She's only twelve. She's the baby of the family.




2.3.- Numbers and Ages

NUMBERS AND AGES

A  Listen and practice.

- | | | |
|--------------|-----------------|-----------------------------|
| 11 eleven | 21 twenty-one | 40 forty |
| 12 twelve | 22 twenty-two | 50 fifty |
| 13 thirteen | 23 twenty-three | 60 sixty |
| 14 fourteen | 24 twenty-four | 70 seventy |
| 15 fifteen | 25 twenty-five | 80 eighty |
| 16 sixteen | 26 twenty-six | 90 ninety |
| 17 seventeen | 27 twenty-seven | 100 one hundred |
| 18 eighteen | 28 twenty-eight | 101 one hundred (and) one |
| 19 nineteen | 29 twenty-nine | 102 one hundred (and) two |
| 20 twenty | 30 thirty | 103 one hundred (and) three |

B  Listen and practice. Notice the word stress.

- | | | | |
|--|---|--|--|
|  thirteen - thirty |  fourteen - forty |  fifteen - fifty |  sixteen - sixty |
|--|---|--|--|

C PAIRWORK Look at the people in Jill's family for one minute. Then close your books. How old are they? Tell your partner.



A. Helen - 76



B. Howard - 52



C. Jackie - 49



D. Megan - 23



E. Tim and Tom - 14

2.4.- Wh-questions with be

Wh-questions with be

What's your name?

My name is Jill.

Where are you from?

I'm from Canada.

How are you today?

I'm just fine.

Who's that?

He's my brother.

How old is he?

He's twenty-one.

What's he like?

He's very nice.

Who's = Who is

Who are they?

They're my classmates.

Where are they from?

They're from Rio.

What's Rio like?

It's very beautiful.

A Complete the conversations with Wh-questions. Then practice with a partner.

- A: Look! Who's that ?

B: Oh, he's a new student.

A: What is her name ?

B: I think his name is Ming.

A: Ming? Where are he from ?

B: He's from China.
- A: Serhat, Where are you from ?

B: I'm from Turkey - from Istanbul.

A: What's Istanbul like?

B: Istanbul is very old and beautiful.

A: What is your middle ?

B: My last name is Erdogan.
- A: Hi, John. How are you today ?

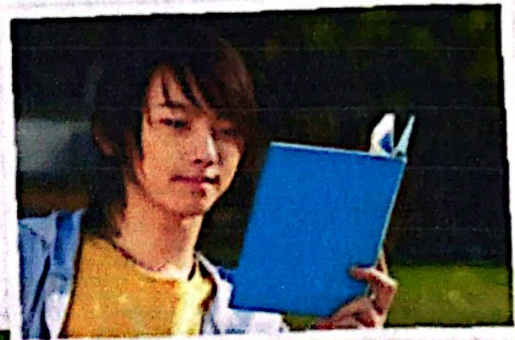
B: I'm just fine. My friend Teresa is here this week - from Argentina.

A: Oh, cool. Who's that ?

B: She's really friendly.

A: How old is she ?

B: She's twenty-eight years old.



2 Wh-questions with be

- ▶ Use *what* to ask about things. Use *where* to ask about places. Use *Who* to ask about people. Use *What ... like?* to ask for a description.
- ▶ Use *how* to ask for a description: **How are you today?** Use *How old* to ask about age: **How old is he?**
- ▶ In answers about age, you can use only the number or the number + *years old*: **He's 18.** OR **He's 18 years old.**

Complete the questions with *how, what, where, or who*. Then match the questions with the answers.

- | | |
|--|--|
| 1. <u>Who</u> is that? ... <u>d</u> ... | a. We're from Thailand – from Bangkok. |
| 2. <u>How</u> is her name? ... <u>e</u> ... | b. She's 16. |
| 3. <u>Who</u> is she like? ... <u>f</u> ... | c. Her name is Nittaya. |
| 4. <u>What</u> old is she? ... <u>b</u> ... | d. She's my sister. |
| 5. <u>What</u> is your family from? ... <u>a</u> ... | e. It's really beautiful. |
| 6. <u>Where</u> is Bangkok like? ... <u>e</u> ... | f. She's a little shy. |

WORD POWER Descriptions

A Listen and practice.



- | | | | | |
|-----------------|--------------|------------|-------------|---------|
| a. pretty | d. talkative | g. serious | j. tall | m. thin |
| b. handsome | e. quiet | h. shy | k. friendly | |
| c. good-looking | f. funny | i. short | l. heavy | |