



Nombre del alumno: Manuela de los Angeles Deara Guzman

Nombre del profesor: Ing. Abel Estrada Dichi

Licenciatura: Medicina Veterinaria Y Zootecnia

Materia: Control y total de calidad

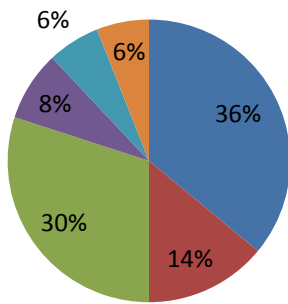
Nombre del trabajo: Verificación de tabla

Ocosingo, Chiapas a 14 de octubre de 2023

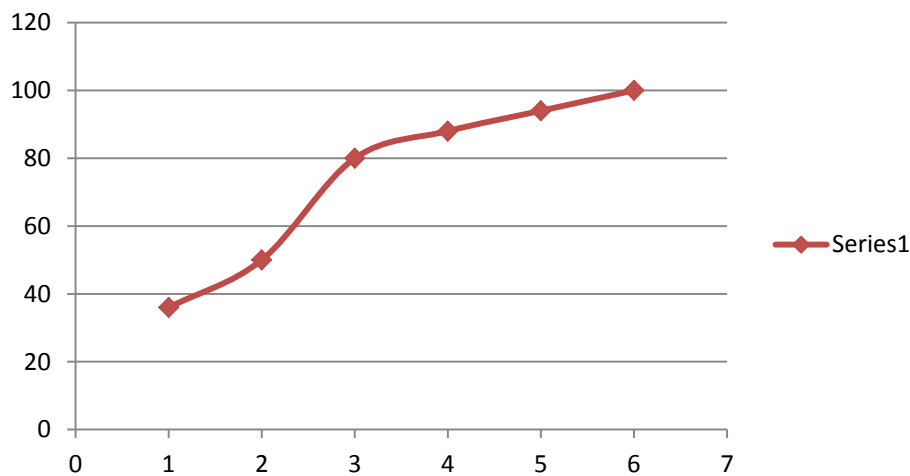
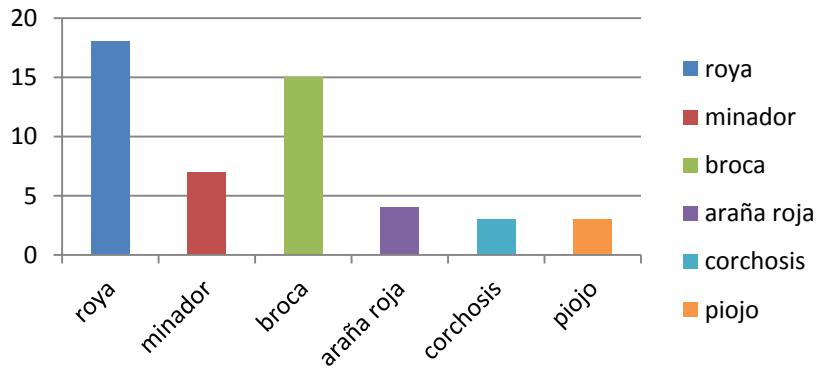
plaga	frecuencia	fr	fp	fpa
roya	18	0.36	36	36
minador	7	0.14	14	50
broca	15	0.30	30	80
araña roja	4	0.08	8	88
corchosis	3	0.06	6	94
piojo	3	0.06	6	100
total	50	1	100	

plagas

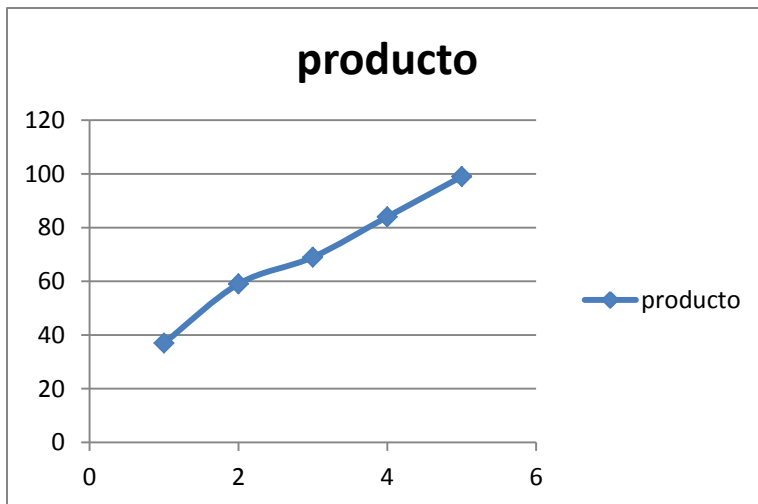
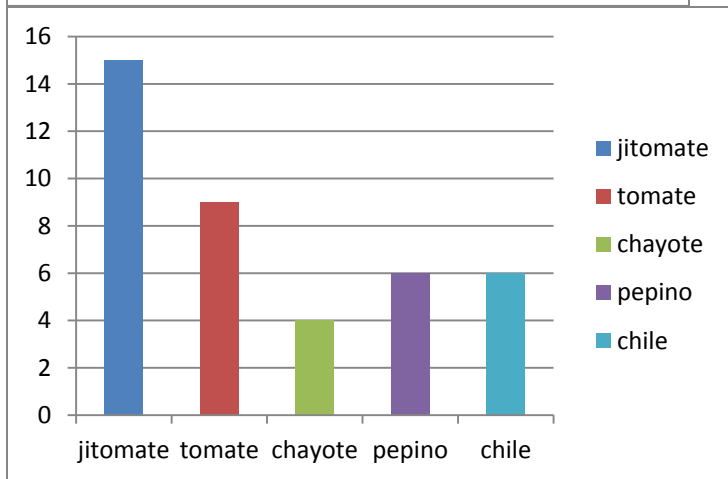
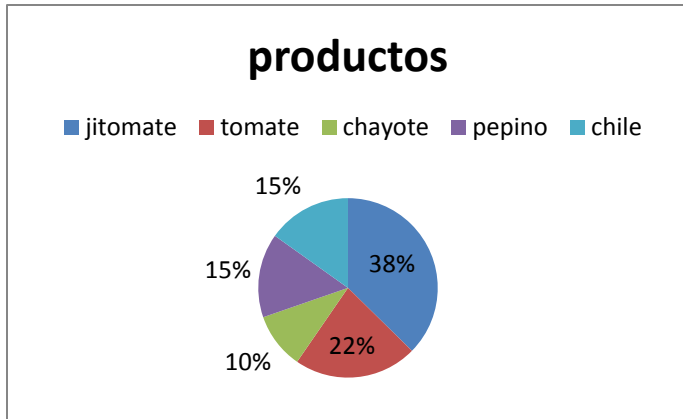
■ roya ■ minador ■ broca ■ araña roja ■ corchosis ■ piojo



plagas



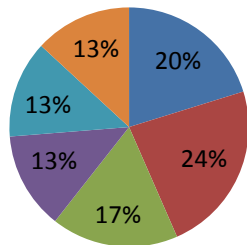
producto	frecuencia	fr	fp	fpa
jitomate	15	0.37	37	37
tomate	9	0.22	22	59
chayote	4	0.10	10	69
pepino	6	0.15	15	84
chile	6	0.15	15	99
total	40	0.99	99	



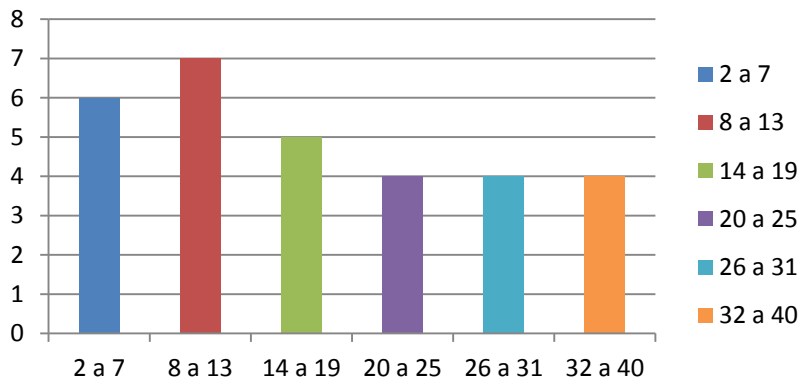
intervalo	frecuencia	fr	fp	fpa
2 a 7	6	0.2	20	20
8 a 13	7	0.23	23	43
14 a 19	5	0.17	17	60
20 a 25	4	0.13	13	73
26 a 31	4	0.13	13	86
32 a 40	4	0.13	13	99
total	30	0.99	99	

intervalo

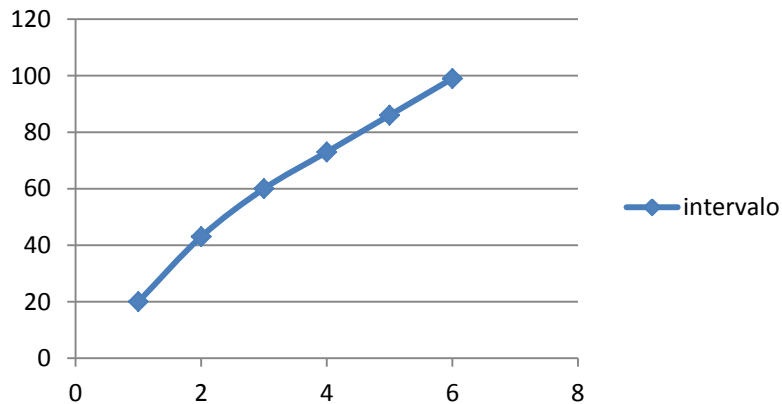
■ 2 a 7 ■ 8 a 13 ■ 14 a 19 ■ 20 a 25 ■ 26 a 31 ■ 32 a 40



intervalo



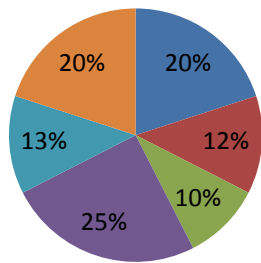
intervalo



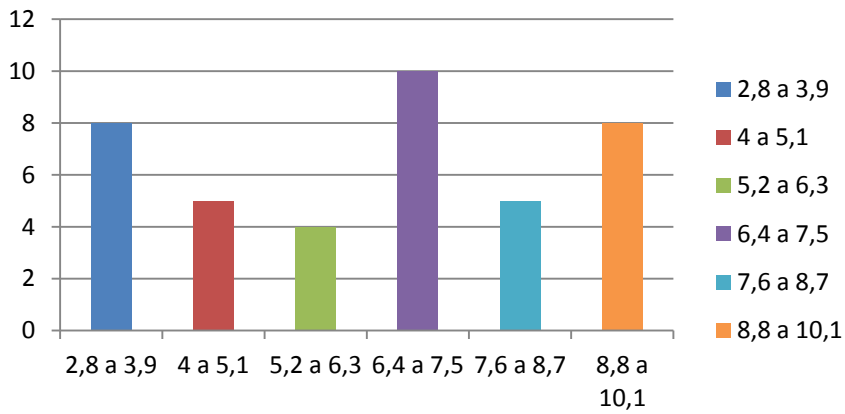
intervalo	frecuencia	fr	fp	fpa
2,8 a 3,9	8	0.2	20	20
4 a 5,1	5	0.125	12.5	32.5
5,2 a 6,3	4	0.1	10	42.5
6,4 a 7,5	10	0.25	25	67.5
7,6 a 8,7	5	0.125	12.5	80
8,8 a 10,1	8	0.2	20	100
total	40	1	100	

intervalo

■ 2,8 a 3,9 ■ 4 a 5,1 ■ 5,2 a 6,3 ■ 6,4 a 7,5 ■ 7,6 a 8,7 ■ 8,8 a 10,1



intervalo



intervalo

