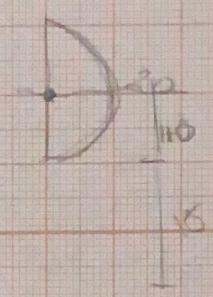
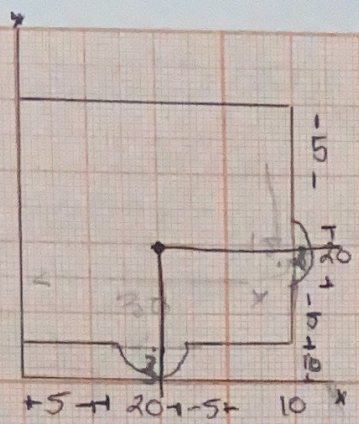


Über Emmanuel López Pulido



$$F1 = 30 \cdot 30 = 900$$

$$F1y = 30/2 = 15$$

$$F1x = 30/2 = 15$$

$$F2x = \frac{4r}{3\pi} = \frac{40}{3 \cdot \pi} = 4.24413 + 30 = 34.24413$$

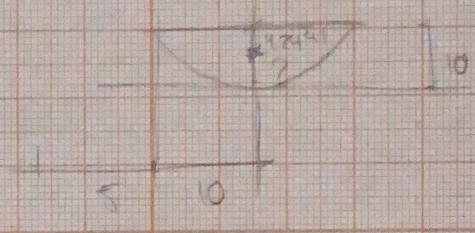
$$F2y = \frac{4r}{3 \cdot \pi} = 4.24413 + 15 = 19.24413$$

$$F2 = 157.0796$$

$$F3x = \frac{40}{3 \cdot \pi} = 4.24413$$

$$F3y = \frac{40}{3 \cdot \pi} = 4.24413$$

$$F3 = 157.0796$$



$$\frac{(900 \cdot 15)(157.0796 \cdot 34.24413)(157.0796 \cdot 15)}{157.0796 + 157.0796 + 900} =$$

$$1214.1592$$

$$1214.1592$$

$$cx = 17.4896 \text{ cm}$$

$$\frac{(900 \cdot 25)(157.0796 \cdot 25)(157.0796 \cdot 5.76)}{157.0796 + 157.0796 + 900} =$$

$$1214.1592$$

$$cy = 22.5108 \text{ cm}$$