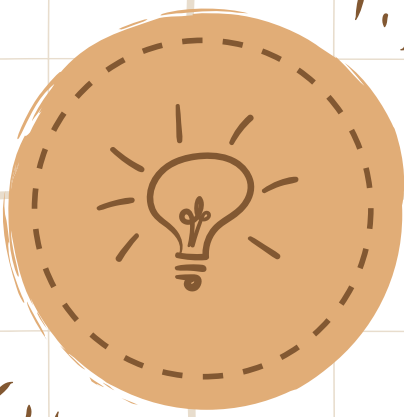
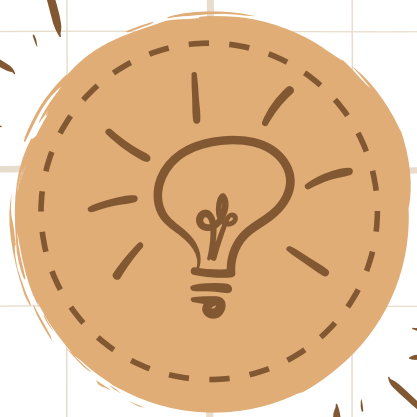


INVERSION

ABC CAPITAL

1. INVERSION

Inversion en la empresa ABC CAPITAL por \$25,000.00 , con un contrato por 3 años al 8.15% de interés.

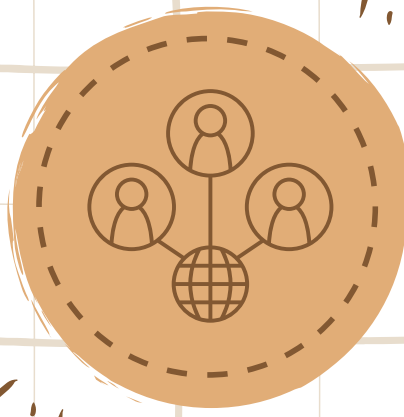


2. DATOS

INVERSION: \$25,000.00
LAPSO DE TIEMPO: 3 AÑOS
INTERES MENSUAL:
8.15%= 0.0815

INTERES SIMPLE

$$\begin{aligned} C_{fn} &= C_o(1+i \cdot n) \\ C_{fn} &= 25000(1+0.0815 \cdot 36) \\ C_{fn} &= 25000(3.934) \\ C_{fn} &= \$98,350.00 \end{aligned}$$



INTERES COMPUESTO

$$\begin{aligned} C_f &= C_o(1+i)^n \\ C_f &= 25000(1+0.0815)^{36} \\ C_f &= \$419,657.37 \end{aligned}$$